

Product Datasheet

GW182 Antibody - BSA Free

NBP1-88231

Unit Size: 0.1 ml

Store at 4C short term. Aliquot and store at -20C long term. Avoid freeze-thaw cycles.

www.novusbio.com



technical@novusbio.com

Protocols, Publications, Related Products, Reviews, Research Tools and Images at:
www.novusbio.com/NBP1-88231

Updated 2/21/2025 v.20.1

Earn rewards for product
reviews and publications.

Submit a publication at www.novusbio.com/publications

Submit a review at www.novusbio.com/reviews/destination/NBP1-88231



NBP1-88231

GW182 Antibody - BSA Free

Product Information	
Unit Size	0.1 ml
Concentration	Concentrations vary lot to lot. See vial label for concentration. If unlisted please contact technical services.
Storage	Store at 4C short term. Aliquot and store at -20C long term. Avoid freeze-thaw cycles.
Clonality	Polyclonal
Preservative	0.02% Sodium Azide
Isotype	IgG
Purity	Immunogen affinity purified
Buffer	PBS (pH 7.2) and 40% Glycerol

Product Description	
Host	Rabbit
Gene ID	27327
Gene Symbol	TNRC6A
Species	Human
Marker	P/GW Body Marker
Immunogen	This antibody was developed against Recombinant Protein corresponding to amino acids: QLQRLLAQQQRAQSQRSVPSGNRPQQDQQGRPLSVQQQMMQQSRQLDPNL LVKQQTPPSQQQPLHQPAMKSFLDNVMPHTTPELQKGPSPINAFSNFPIGLNS NLNVNMDMNSIKEPQSRLRKWT

Product Application Details	
Applications	Immunohistochemistry, Immunohistochemistry-Paraffin
Recommended Dilutions	Immunohistochemistry 1:50 - 1:200, Immunohistochemistry-Paraffin 1:50 - 1:200
Application Notes	For IHC-Paraffin, HIER pH 6 retrieval is recommended.

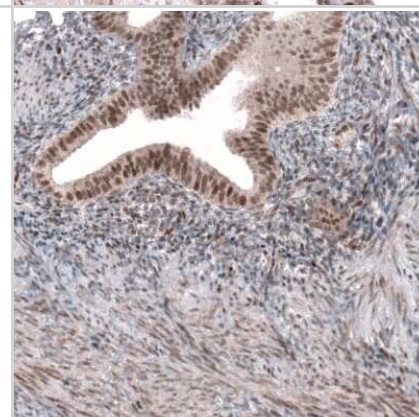


Images

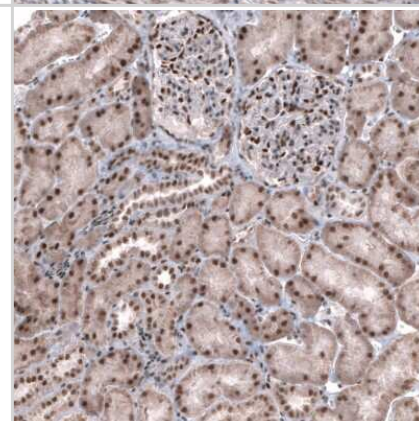
Immunohistochemistry-Paraffin: GW182 Antibody [NBP1-88231] - Staining of human prostate shows strong nuclear combined with weaker granular cytoplasmic positivity in glandular cells.



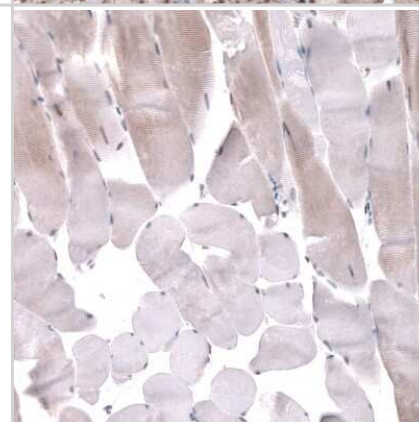
Immunohistochemistry-Paraffin: GW182 Antibody [NBP1-88231] - Staining of human endometrium shows strong nuclear and moderate cytoplasmic immunoreactivity in glandular cells.



Immunohistochemistry-Paraffin: GW182 Antibody [NBP1-88231] - Staining of human kidney shows strong nuclear and moderate cytoplasmic positivity in cells in tubules.



Immunohistochemistry-Paraffin: GW182 Antibody [NBP1-88231] - Staining of human skeletal muscle shows very weak nuclear and cytoplasmic positivity in striated muscle fibers.





Novus Biologicals USA

10730 E. Briarwood Avenue
Centennial, CO 80112
USA
Phone: 303.730.1950
Toll Free: 1.888.506.6887
Fax: 303.730.1966
nb-customerservice@bio-techne.com

Bio-Techne Canada

21 Canmotor Ave
Toronto, ON M8Z 4E6
Canada
Phone: 905.827.6400
Toll Free: 855.668.8722
Fax: 905.827.6402
canada.inquires@bio-techne.com

Bio-Techne Ltd

19 Barton Lane
Abingdon Science Park
Abingdon, OX14 3NB, United Kingdom
Phone: (44) (0) 1235 529449
Free Phone: 0800 37 34 15
Fax: (44) (0) 1235 533420
info.EMEA@bio-techne.com

General Contact Information

www.novusbio.com
Technical Support: nb-technical@bio-techne.com
Orders: nb-customerservice@bio-techne.com
General: novus@novusbio.com

Products Related to NBP1-88231

HAF008	Goat anti-Rabbit IgG Secondary Antibody [HRP]
NB7160	Goat anti-Rabbit IgG (H+L) Secondary Antibody [HRP]
NBP2-24891	Rabbit IgG Isotype Control
NBP1-88231PEP	GW182 Recombinant Protein Antigen

Limitations

This product is for research use only and is not approved for use in humans or in clinical diagnosis. Primary Antibodies are guaranteed for 1 year from date of receipt.

For more information on our 100% guarantee, please visit www.novusbio.com/guarantee

Earn gift cards/discounts by submitting a review: www.novusbio.com/reviews/submit/NBP1-88231

Earn gift cards/discounts by submitting a publication using this product:
www.novusbio.com/publications

