

Product Datasheet

Lysine (K)-specific Demethylase 4A/KDM4A/JMJD2A Antibody - BSA Free NBP1-87855

Unit Size: 0.1 ml

Store at 4C short term. Aliquot and store at -20C long term. Avoid freeze-thaw cycles.

www.novusbio.com



technical@novusbio.com

Publications: 2

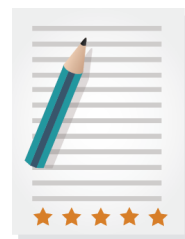
Protocols, Publications, Related Products, Reviews, Research Tools and Images at:
www.novusbio.com/NBP1-87855

Updated 2/21/2025 v.20.1

**Earn rewards for product
reviews and publications.**

Submit a publication at www.novusbio.com/publications

Submit a review at www.novusbio.com/reviews/destination/NBP1-87855



NBP1-87855

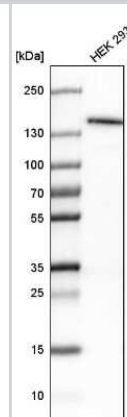
Lysine (K)-specific Demethylase 4A/KDM4A/JMJD2A Antibody - BSA Free

Product Information	
Unit Size	0.1 ml
Concentration	Concentrations vary lot to lot. See vial label for concentration. If unlisted please contact technical services.
Storage	Store at 4C short term. Aliquot and store at -20C long term. Avoid freeze-thaw cycles.
Clonality	Polyclonal
Preservative	0.02% Sodium Azide
Isotype	IgG
Purity	Immunogen affinity purified
Buffer	PBS (pH 7.2) and 40% Glycerol
Product Description	
Host	Rabbit
Gene ID	9682
Gene Symbol	KDM4A
Species	Human, Mouse
Reactivity Notes	Immunogen displays the following percentage of sequence identity for non-tested species: Rat (88%). Mouse reactivity reported in the scientific literature (PMID: 25336657).
Immunogen	This antibody was developed against Recombinant Protein corresponding to amino acids: DVFVRKFQPERYKLWKAGKDNTVIDHTLPTPEAAEFLKESELPPRAGNEEECP EEDMEGVEDGEEDLKTSLAKHRIGTKRHRVCLEIPQEVSQSELPKEDLSSE QYEMTEC
Product Application Details	
Applications	Western Blot, Immunocytochemistry/ Immunofluorescence, Immunohistochemistry, Immunohistochemistry-Paraffin
Recommended Dilutions	Western Blot 0.04-0.4 ug/ml, Immunohistochemistry 1:200 - 1:500, Immunocytochemistry/ Immunofluorescence 0.25-2 ug/ml, Immunohistochemistry-Paraffin 1:200 - 1:500
Application Notes	WB reported in scientific literature (PMID: 25336657). For IHC-Paraffin, HIER pH 6 retrieval is recommended. ICC/IF, Fixation Permeabilization: Use PFA/Triton X-100.

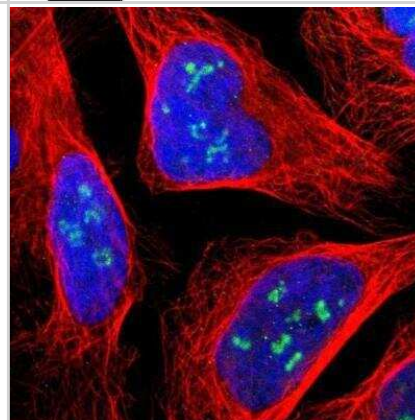


Images

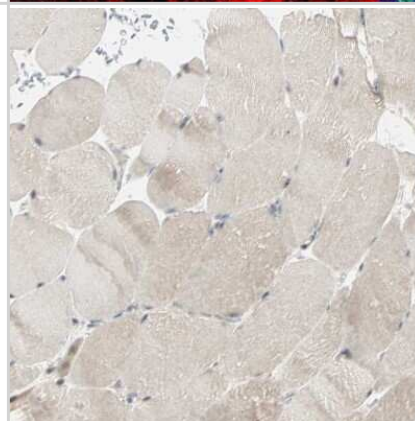
Western Blot: Lysine (K)-specific Demethylase 4A/KDM4A/JMJD2A Antibody [NBP1-87855] - Analysis in human cell line HEK 293.



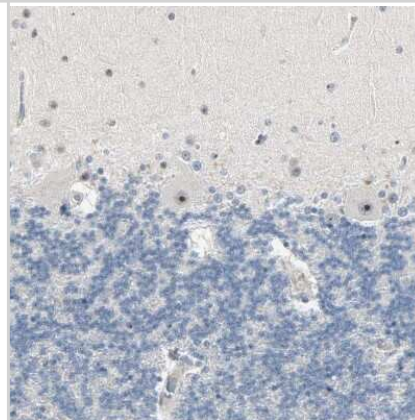
Immunocytochemistry/Immunofluorescence: Lysine (K)-specific Demethylase 4A/KDM4A/JMJD2A Antibody [NBP1-87855] - Staining of human cell line U-2 OS shows positivity in nucleoli.



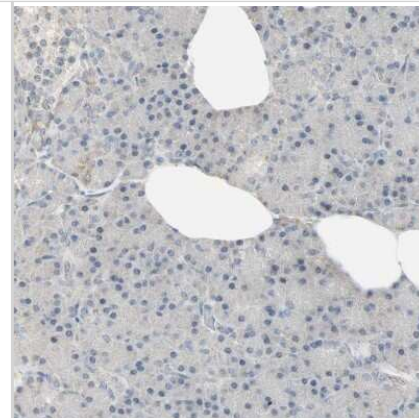
Immunohistochemistry-Paraffin: Lysine (K)-specific Demethylase 4A/KDM4A/JMJD2A Antibody [NBP1-87855] - Staining of human skeletal muscle shows no positivity in myocytes as expected.



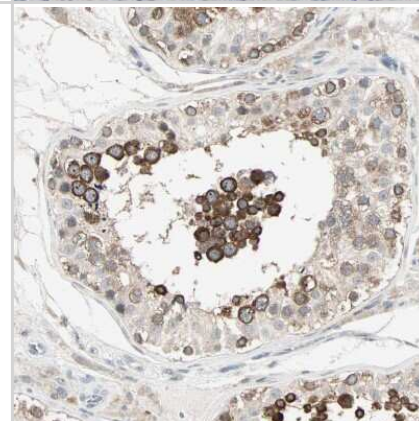
Immunohistochemistry-Paraffin: Lysine (K)-specific Demethylase 4A/KDM4A/JMJD2A Antibody [NBP1-87855] - Staining of human cerebellum shows strong positivity in nucleoli in Purkinje cells.



Immunohistochemistry-Paraffin: Lysine (K)-specific Demethylase 4A/KDM4A/JMJD2A Antibody [NBP1-87855] - Staining of human pancreas shows no positivity in exocrine glandular cells as expected.



Immunohistochemistry-Paraffin: Lysine (K)-specific Demethylase 4A/KDM4A/JMJD2A Antibody [NBP1-87855] - Staining of human testis shows strong cytoplasmic positivity in cells in seminiferous ducts.



Publications

Dikopoltsev E, Foltyn VN, Zehl M et al. FBXO22 Protein Is Required for Optimal Synthesis of the N-Methyl-d-Aspartate (NMDA) Receptor Coagonist d-Serine. J Biol Chem 2014-12-05 [PMID: 25336657] (WB, Mouse)

Verrier L, Escaffit F, Chailleux C et al. A New Isoform of the Histone Demethylase JMJD2A/KDM4A Is Required for Skeletal Muscle Differentiation. PLoS Genet 2011-06-01 [PMID: 21694756]



Novus Biologicals USA

10730 E. Briarwood Avenue
Centennial, CO 80112
USA
Phone: 303.730.1950
Toll Free: 1.888.506.6887
Fax: 303.730.1966
nb-customerservice@bio-techne.com

Bio-Techne Canada

21 Canmotor Ave
Toronto, ON M8Z 4E6
Canada
Phone: 905.827.6400
Toll Free: 855.668.8722
Fax: 905.827.6402
canada.inquires@bio-techne.com

Bio-Techne Ltd

19 Barton Lane
Abingdon Science Park
Abingdon, OX14 3NB, United Kingdom
Phone: (44) (0) 1235 529449
Free Phone: 0800 37 34 15
Fax: (44) (0) 1235 533420
info.EMEA@bio-techne.com

General Contact Information

www.novusbio.com
Technical Support: nb-technical@bio-techne.com
Orders: nb-customerservice@bio-techne.com
General: novus@novusbio.com

Products Related to NBP1-87855

NBP1-87855PEP	Lysine (K)-specific Demethylase 4A/KDM4A/JMJD2A Recombinant Protein Antigen
HAF008	Goat anti-Rabbit IgG Secondary Antibody [HRP]
NB7160	Goat anti-Rabbit IgG (H+L) Secondary Antibody [HRP]
NBP2-24891	Rabbit IgG Isotype Control

Limitations

This product is for research use only and is not approved for use in humans or in clinical diagnosis. Primary Antibodies are guaranteed for 1 year from date of receipt.

For more information on our 100% guarantee, please visit www.novusbio.com/guarantee

Earn gift cards/discounts by submitting a review: www.novusbio.com/reviews/submit/NBP1-87855

Earn gift cards/discounts by submitting a publication using this product:
www.novusbio.com/publications

