

# Product Datasheet

## Myosin 1B Antibody - BSA Free NBP1-87739

Unit Size: 0.1 ml

Store at 4C short term. Aliquot and store at -20C long term. Avoid freeze-thaw cycles.

[www.novusbio.com](http://www.novusbio.com)



[technical@novusbio.com](mailto:technical@novusbio.com)

**Reviews: 1 Publications: 5**

Protocols, Publications, Related Products, Reviews, Research Tools and Images at:  
[www.novusbio.com/NBP1-87739](http://www.novusbio.com/NBP1-87739)

Updated 2/8/2026 v.20.1

**Earn rewards for product  
reviews and publications.**

Submit a publication at [www.novusbio.com/publications](http://www.novusbio.com/publications)

Submit a review at [www.novusbio.com/reviews/destination/NBP1-87739](http://www.novusbio.com/reviews/destination/NBP1-87739)



**NBP1-87739**

Myosin 1B Antibody - BSA Free

Product Information	
<b>Unit Size</b>	0.1 ml
<b>Concentration</b>	Concentrations vary lot to lot. See vial label for concentration. If unlisted please contact technical services.
<b>Storage</b>	Store at 4C short term. Aliquot and store at -20C long term. Avoid freeze-thaw cycles.
<b>Clonality</b>	Polyclonal
<b>Preservative</b>	0.02% Sodium Azide
<b>Isotype</b>	IgG
<b>Purity</b>	Affinity purified
<b>Buffer</b>	PBS (pH 7.2) and 40% Glycerol

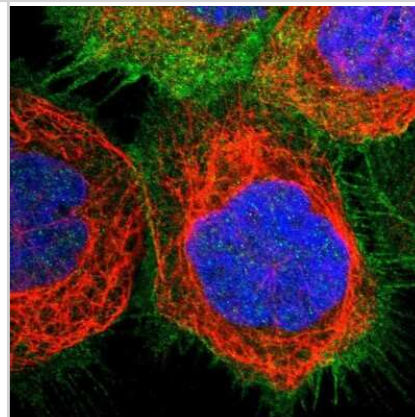
Product Description	
<b>Description</b>	Novus Biologicals Rabbit Myosin 1B Antibody - BSA Free (NBP1-87739) is a polyclonal antibody validated for use in IHC, WB and ICC/IF. Anti-Myosin 1B Antibody: Cited in 5 publications. All Novus Biologicals antibodies are covered by our 100% guarantee.
<b>Host</b>	Rabbit
<b>Gene ID</b>	4430
<b>Gene Symbol</b>	MYO1B
<b>Species</b>	Human, Mouse, Rat, Chicken
<b>Reactivity Notes</b>	Chicken reactivity reported in scientific literature (PMID: 25812521). Rat reactivity reported in the scientific literature (PMID: 26940917). Mouse reactivity reported from a verified customer review.
<b>Immunogen</b>	This antibody was developed against Recombinant Protein corresponding to amino acids: LLNKLKLERDFSRYNYSLSLDSAKVNGVDDAANFRTVRNAMQIVGFMDEAESV LAVVA AVLKLGNI EFKPE SRV NGLDESKIKDKNELKEICELTGIDQSVLERAFSFR TVEAKQEKVSTTLNVA

Product Application Details	
<b>Applications</b>	Western Blot, Immunohistochemistry-Paraffin, Immunocytochemistry/ Immunofluorescence, Immunohistochemistry
<b>Recommended Dilutions</b>	Western Blot Validated from a verified customer review., Immunohistochemistry 1:50 - 1:200, Immunocytochemistry/ Immunofluorescence 0.25-2 ug/ml, Immunohistochemistry-Paraffin 1:50 - 1:200
<b>Application Notes</b>	IHC-Paraffin, HIER pH 6 retrieval is recommended. ICC/IF, Fixation Permeabilization: Use PFA/Triton X-100.

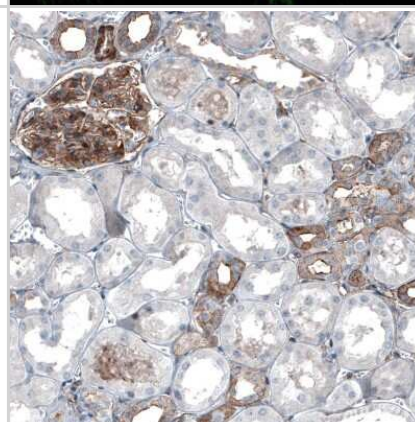


## Images

Immunocytochemistry/Immunofluorescence: Myosin 1B Antibody [NBP1-87739] - Staining of human cell line A-431 shows positivity in plasma membrane and cell junctions. Antibody staining is shown in green.



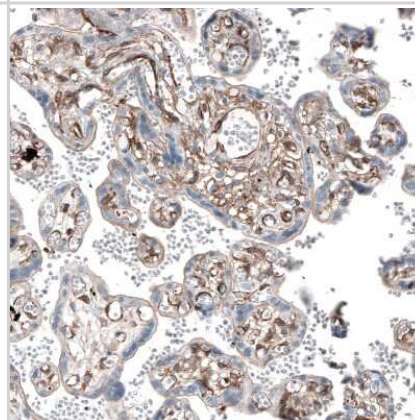
Immunohistochemistry-Paraffin: Myosin 1B Antibody [NBP1-87739] - Staining of human kidney shows moderate membranous positivity in cells in glomeruli and in cells in tubules.



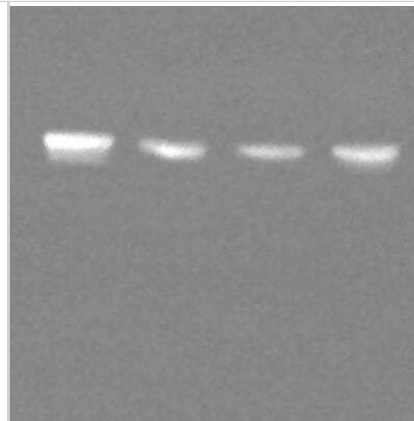
Western Blot: Myosin 1B Antibody [NBP1-87739] - (B) Western blot of Myo1b from freshly isolated ATII cells and ATII cells after 2 days of culture (0 and 2, respectively) to demonstrate expression of Myo1b in ATII cells. Ponceau S staining was used to control for equal protein loading (M, marker). Image collected and cropped by CiteAb from the following publication (<https://jcs.biologists.org/lookup/doi/10.1242/jcs.181313>) licensed under a CC-BY license.



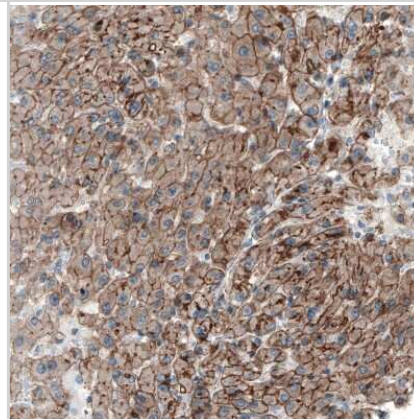
Immunohistochemistry-Paraffin: Myosin 1B Antibody [NBP1-87739] - Staining of human placenta shows moderate membranous positivity in trophoblastic cells.



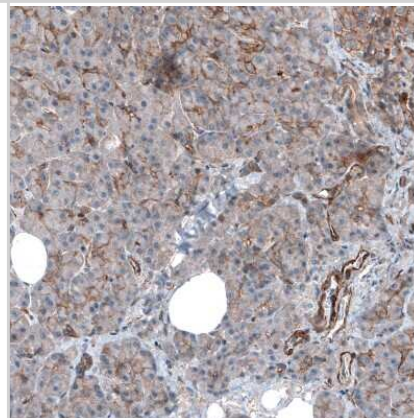
Western Blot: Myosin 1B Antibody [NBP1-87739] - Lysates of mouse whole brain in different developmental stages. Antibody at 1:1000. Molecular weight of the protein is around 130-140 KDa. Image submitted by a verified customer review



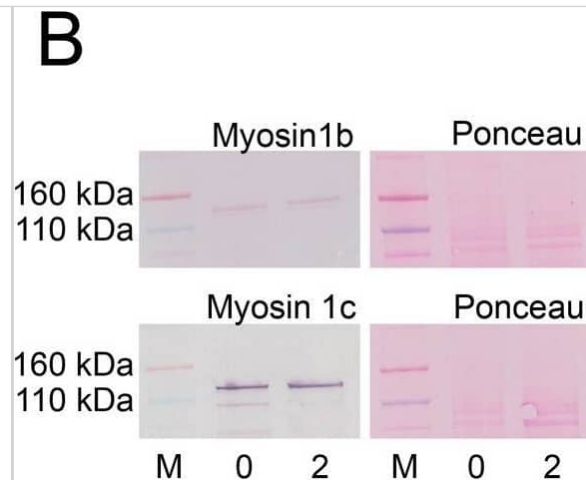
Immunohistochemistry-Paraffin: Myosin 1B Antibody [NBP1-87739] - Staining of human liver shows moderate membranous positivity in hepatocytes.



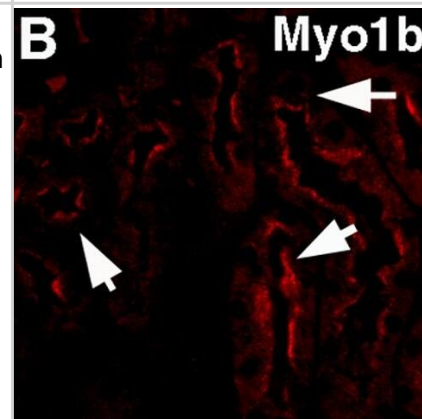
Immunohistochemistry-Paraffin: Myosin 1B Antibody [NBP1-87739] - Staining of human pancreas shows moderate membranous positivity in exocrine glandular cells.



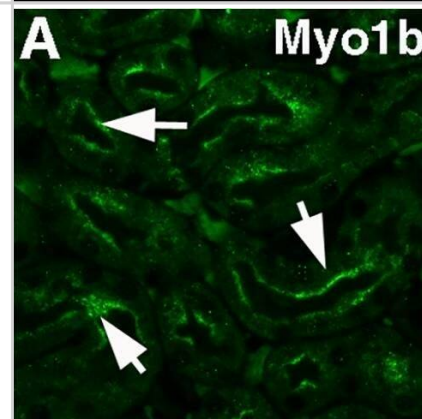
Western Blot: Myosin 1B Antibody [NBP1-87739] - Expression & localization of Myo1b & Myo1c in ATII cells. (A) Semi-quantitative RT-PCR showed that Myo1b & Myo1c are among the highest expressed Myo1 isoforms in ATII cells. Data (mean $\pm$ s.e.m.) obtained from three cell isolations & three experiments per isolation are shown relative to the expression of the housekeeping gene HMBS. Day 0, freshly isolated cells; Day 2, after 2 days in culture. (B) Western blot of Myo1b & Myo1c from freshly isolated ATII cells & ATII cells after 2 days of culture (0 & 2, respectively) to demonstrate expression of Myo1b & Myo1c in ATII cells. Ponceau S staining was used to control for equal protein loading (M, marker). (C) Colocalization of anti Myo1b & Myo1c staining with fused secretory vesicles marked by ABCa3 & phalloidin immunostaining. The ABCa3 transporter is a marker for secretory vesicle membrane in ATII cells. After ATP stimulation, some vesicles fused with the plasma membrane & acquired an actin coat, which was labeled by phalloidin staining (arrow). Scale bars: 10  $\mu$ m. Insets show the enlarged view of the fused lamellar bodies. Scale bars: 1  $\mu$ m. Image collected & cropped by CiteAb from the following publication (<https://journals.biologists.com/jcs/article/doi/10.1242/jcs.181313/260175/The-role-of-myosin-1c-and-myosin-1b-for-surfactant>), licensed under a CC-BY license. Not internally tested by Novus Biologicals.



In mouse kidney Myo1b is found in PT cells. In kidney cross-sections treated with Hoechst stain to identify nuclei (C, blue), Myo1b stained with anti-Myo1b antibodies (B, red) co-localized with Lotus tetragonolobus lectin, a marker for PTs (A, green). D is a merged image of A-C. The arrows identify the corresponding region in each panel. Scale bar = 20  $\mu$ m. A'-D' are control images of sections stained with lectin (A'), isotype antibodies (B'), and Hoechst (C'); D' is a merge of A'-C'. The arrows, which identify PTs in A', point to the corresponding location in each panel. Scale bar = 20  $\mu$ m. Image collected and cropped by CiteAb from the following open publication (<https://pubmed.ncbi.nlm.nih.gov/26361046>), licensed under a CC-BY license. Not internally tested by Novus Biologicals.



Myo1b localizes to the brush border of renal PT cells. In mouse kidney cross-sections, Myo1b (A, green) identified with anti-Myo1b antibodies was at the brush border of PT cells identified by staining of apical microvilli with anti-actin antibodies (B, red). C, Hoechst stain. D, Merge. Scale bar = 20  $\mu$ m. A'-D' are control images of renal PT cells using rabbit IgG (A'). B' is stained with anti-actin antibodies. C' is stained with Hoechst, and D' is a merged image. The arrows point to the corresponding location in each image. Scale bar = 20  $\mu$ m. Image collected and cropped by CiteAb from the following open publication (<https://pubmed.ncbi.nlm.nih.gov/26361046>), licensed under a CC-BY license. Not internally tested by Novus Biologicals.



## Publications

Revenu C, Lebreton C, Cannata Serio M et Al. Myosin 1b regulates intestinal epithelial morphogenesis via interaction with UNC45A Cell Rep 2024-12-03 [PMID: 39636728]

Zhao G, Liu S, Arun S et al. A tubule-sheet continuum model for the mechanism of nuclear envelope assembly Developmental cell 2023-04-24 [PMID: 37098350]

Kittelberger N, Breunig M, Martin R et al. The role of myosin 1c and myosin 1b for surfactant exocytosis J. Cell. Sci. 2016-03-03 [PMID: 26940917] (WB, Rat)

Komaba S, Coluccio LM. Myosin 1b Regulates Amino Acid Transport by Associating Transporters with the Apical Plasma Membrane of Kidney Cells. PLoS One 2015-01-01 [PMID: 26361046] (IF/IHC, Mouse)

Emil Rozbicki, Manli Chuai, Antti I. Karjalainen et al. Myosin-II-mediated cell shape changes and cell intercalation contribute to primitive streak formation. Nature Cell Biology 2015-01-01 [PMID: 25812521] (IF/IHC, Chicken)





### **Novus Biologicals USA**

10730 E. Briarwood Avenue  
Centennial, CO 80112  
USA  
Phone: 303.730.1950  
Toll Free: 1.888.506.6887  
Fax: 303.730.1966  
nb-customerservice@bio-techne.com

### **Bio-Techne Canada**

21 Canmotor Ave  
Toronto, ON M8Z 4E6  
Canada  
Phone: 905.827.6400  
Toll Free: 855.668.8722  
Fax: 905.827.6402  
canada.inquires@bio-techne.com

### **Bio-Techne Ltd**

19 Barton Lane  
Abingdon Science Park  
Abingdon, OX14 3NB, United Kingdom  
Phone: (44) (0) 1235 529449  
Free Phone: 0800 37 34 15  
Fax: (44) (0) 1235 533420  
info.EMEA@bio-techne.com

### **General Contact Information**

www.novusbio.com  
Technical Support: nb-technical@bio-techne.com  
Orders: nb-customerservice@bio-techne.com  
General: novus@novusbio.com

### **Products Related to NBP1-87739**

---

NBP1-87739PEP	Myosin 1B Recombinant Protein Antigen
NBP2-33376H	Blue Marker Antibody (6F4-F6) [HRP]
HAF008	Goat anti-Rabbit IgG Secondary Antibody [HRP]
NB7160	Goat anti-Rabbit IgG (H+L) Secondary Antibody [HRP]
NBP2-24891	Rabbit IgG Isotype Control

---

### **Limitations**

This product is for research use only and is not approved for use in humans or in clinical diagnosis. Primary Antibodies are guaranteed for 1 year from date of receipt.

For more information on our 100% guarantee, please visit [www.novusbio.com/guarantee](http://www.novusbio.com/guarantee)

Earn gift cards/discounts by submitting a review: [www.novusbio.com/reviews/submit/NBP1-87739](http://www.novusbio.com/reviews/submit/NBP1-87739)

Earn gift cards/discounts by submitting a publication using this product:  
[www.novusbio.com/publications](http://www.novusbio.com/publications)

