

Product Datasheet

ALDH1A2 Antibody - BSA Free

NBP1-87158

Unit Size: 0.1 ml

Store at 4C short term. Aliquot and store at -20C long term. Avoid freeze-thaw cycles.

www.novusbio.com



technical@novusbio.com

Reviews: 1 Publications: 4

Protocols, Publications, Related Products, Reviews, Research Tools and Images at:
www.novusbio.com/NBP1-87158

Updated 4/13/2025 v.20.1

Earn rewards for product reviews and publications.

Submit a publication at www.novusbio.com/publications

Submit a review at www.novusbio.com/reviews/destination/NBP1-87158



NBP1-87158

ALDH1A2 Antibody - BSA Free

Product Information

Unit Size	0.1 ml
Concentration	Concentrations vary lot to lot. See vial label for concentration. If unlisted please contact technical services.
Storage	Store at 4C short term. Aliquot and store at -20C long term. Avoid freeze-thaw cycles.
Clonality	Polyclonal
Preservative	0.02% Sodium Azide
Isotype	IgG
Purity	Immunogen affinity purified
Buffer	PBS (pH 7.2) and 40% Glycerol
Target Molecular Weight	57 kDa

Product Description

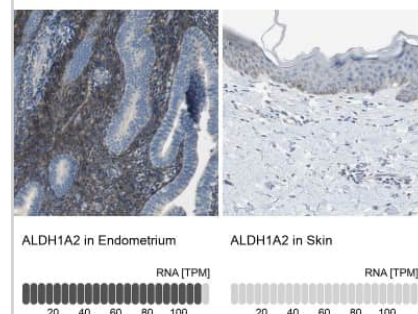
Host	Rabbit
Gene ID	8854
Gene Symbol	ALDH1A2
Species	Human
Marker	Dorso-temporal Retina Marker
Immunogen	This antibody was developed against Recombinant Protein corresponding to amino acids: VVGSPFDPTTEQGPQIDKKQYNKILELIQSGVAEGAKLECGGKGLGRKGFFIEP TVFSNVTDDMRIAKEEIFGPVQEILRFKTMDEVIERANNSDFGLVAAVFTNDINK ALTVSSAMQAGTV

Product Application Details

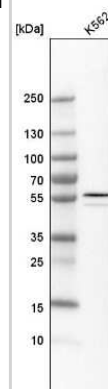
Applications	Western Blot, Simple Western, Immunohistochemistry, Immunohistochemistry-Paraffin
Recommended Dilutions	Western Blot 0.04-0.4 ug/ml, Simple Western Validated from a verified customer review, Immunohistochemistry 1:200 - 1:500, Immunohistochemistry-Paraffin 1:200 - 1:500
Application Notes	For IHC-Paraffin, HIER pH 6 retrieval is recommended.

Images

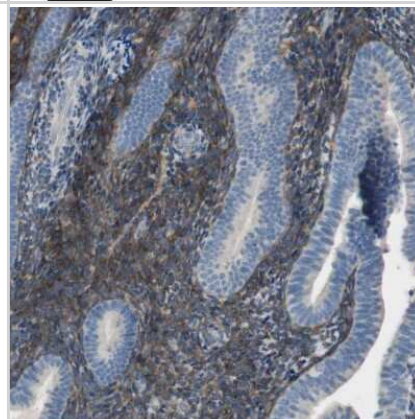
Immunohistochemistry-Paraffin: ALDH1A2 Antibody [NBP1-87158] - Staining in human endometrium and skin tissues . Corresponding ALDH1A2 RNA-seq data are presented for the same tissues.



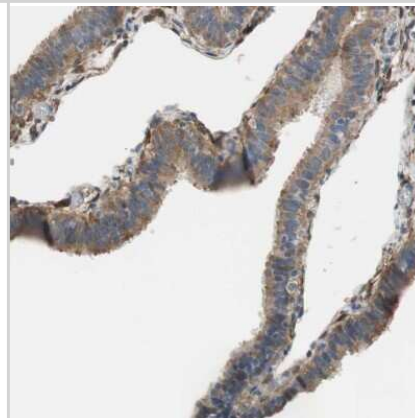
Western Blot: ALDH1A2 Antibody [NBP1-87158] - Analysis in human cell line K562.



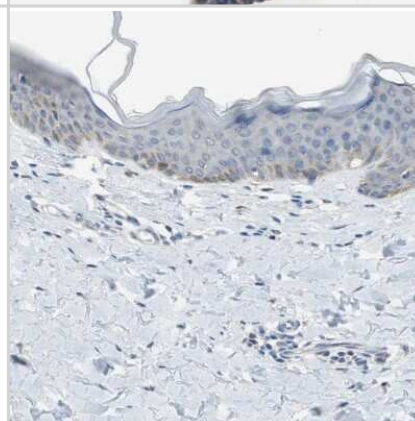
Immunohistochemistry-Paraffin: ALDH1A2 Antibody [NBP1-87158] - Staining of human endometrium shows moderate to strong cytoplasmic positivity in cells in endometrial stroma.



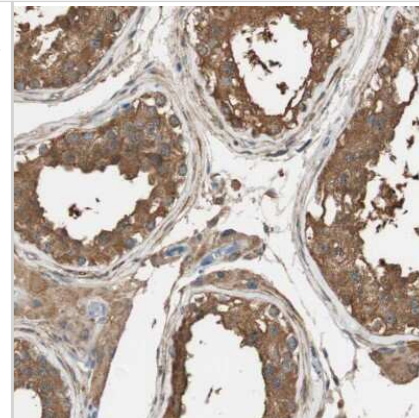
Immunohistochemistry-Paraffin: ALDH1A2 Antibody [NBP1-87158] - Staining of human fallopian tube shows moderate to strong cytoplasmic positivity in glandular cells.



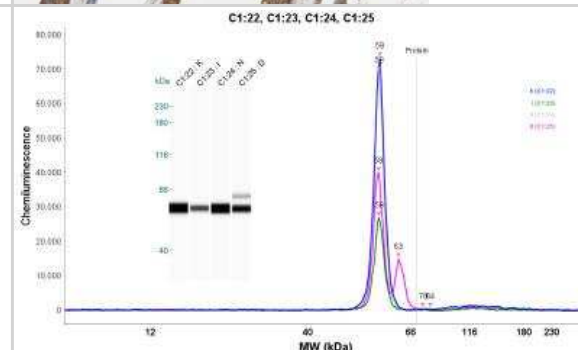
Immunohistochemistry-Paraffin: ALDH1A2 Antibody [NBP1-87158] - Staining of human skin shows weak cytoplasmic positivity in a subset of keratinocytes.



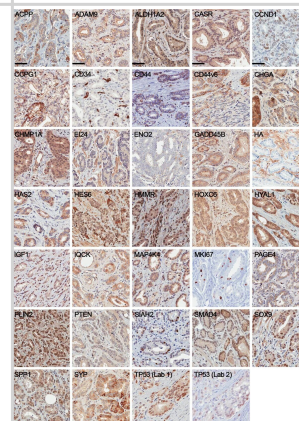
Immunohistochemistry-Paraffin: ALDH1A2 Antibody [NBP1-87158] -
Staining of human testis shows moderate to strong cytoplasmic positivity in cells in seminiferous ducts.



Simple Western: ALDH1A2 Antibody [NBP1-87158] - Detection of ALDH1A2 in K562 cells using ALDH1A2 antibody at a dilution of 1:50. K (lane 1) = Wild Type K562, I (lane 2) = Imatinib Resistant K562, N (lane 3) = Nilotinib Resistant K562 and D (lane 4) = Dasatinib Resistant K562. Image submitted by a verified customer review.



Immunohistochemistry of candidate biomarkers in prostate cancer. Representative immunohistochemical staining of ACPP, ADAM9, ALDH1A2, CASR, CCND1, CCPG1, CD34, CD44, CD44v6, CHGA, CHMP1A, EI24, ENO2, GADD45B, HA, HAS2, HES6, HMMR, HOXC6, HYAL1, IGF1, IQCK, MAP4K4, MKI67, PAGE4, PLIN2, PTEN, SIAH2, SMAD4, SOX9, SPP1, SYP, & TP53 from prostate cancer tissue microarrays. Scale bar represents 50 μ m. Image collected & cropped by CiteAb from the following publication (<https://bmccancer.biomedcentral.com/articles/10.1186/1471-2407-14-244>), licensed under a CC-BY license. Not internally tested by Novus Biologicals.



Publications

Seidensaal K, Nollert A, Feige AH et al. Impaired aldehyde dehydrogenase 1 subfamily member 2A-dependent retinoic acid signaling is related with a mesenchymal-like phenotype and an unfavorable prognosis of head and neck squamous cell carcinoma. *Mol Cancer* 2015-12-03 [PMID: 26634247] (IF/IHC, Human)

Harper AR, Wiechmann AF, Moiseyev G et al. Identification of Active Retinaldehyde Dehydrogenase Isoforms in the Postnatal Human Eye. *PLoS One* 2015-01-01 [PMID: 25793304] (WB, IF/IHC, Human)

Rizzardi AE, Rosener NK, Koopmeiners JS et al. Evaluation of protein biomarkers of prostate cancer aggressiveness. *BMC Cancer* 2014-04-05 [PMID: 24708576] (IF/IHC, Human)

Kostareli E, Holzinger D, Bogatyrova O et al. HPV-related methylation signature predicts survival in oropharyngeal squamous cell carcinomas. *J Clin Invest* 2013-06-01 [PMID: 23635773]



Novus Biologicals USA

10730 E. Briarwood Avenue
Centennial, CO 80112
USA
Phone: 303.730.1950
Toll Free: 1.888.506.6887
Fax: 303.730.1966
nb-customerservice@bio-techne.com

Bio-Techne Canada

21 Canmotor Ave
Toronto, ON M8Z 4E6
Canada
Phone: 905.827.6400
Toll Free: 855.668.8722
Fax: 905.827.6402
canada.inquires@bio-techne.com

Bio-Techne Ltd

19 Barton Lane
Abingdon Science Park
Abingdon, OX14 3NB, United Kingdom
Phone: (44) (0) 1235 529449
Free Phone: 0800 37 34 15
Fax: (44) (0) 1235 533420
info.EMEA@bio-techne.com

General Contact Information

www.novusbio.com
Technical Support: nb-technical@bio-techne.com
Orders: nb-customerservice@bio-techne.com
General: novus@novusbio.com

Products Related to NBP1-87158

NBP1-87158PEP	ALDH1A2 Recombinant Protein Antigen
HAF008	Goat anti-Rabbit IgG Secondary Antibody [HRP]
NB7160	Goat anti-Rabbit IgG (H+L) Secondary Antibody [HRP]
NBP2-24891	Rabbit IgG Isotype Control

Limitations

This product is for research use only and is not approved for use in humans or in clinical diagnosis. Primary Antibodies are guaranteed for 1 year from date of receipt.

For more information on our 100% guarantee, please visit www.novusbio.com/guarantee

Earn gift cards/discounts by submitting a review: www.novusbio.com/reviews/submit/NBP1-87158

Earn gift cards/discounts by submitting a publication using this product:
www.novusbio.com/publications

