

Product Datasheet

EMP2 Antibody - BSA Free NBP1-86847

Unit Size: 0.1 ml

Store at 4C short term. Aliquot and store at -20C long term. Avoid freeze-thaw cycles.

www.novusbio.com



technical@novusbio.com

Reviews: 1 Publications: 3

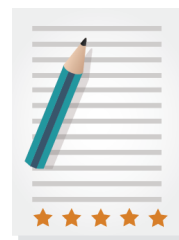
Protocols, Publications, Related Products, Reviews, Research Tools and Images at:
www.novusbio.com/NBP1-86847

Updated 9/9/2025 v.20.1

**Earn rewards for product
reviews and publications.**

Submit a publication at www.novusbio.com/publications

Submit a review at www.novusbio.com/reviews/destination/NBP1-86847



NBP1-86847

EMP2 Antibody - BSA Free

Product Information

Unit Size	0.1 ml
Concentration	Concentrations vary lot to lot. See vial label for concentration. If unlisted please contact technical services.
Storage	Store at 4C short term. Aliquot and store at -20C long term. Avoid freeze-thaw cycles.
Clonality	Polyclonal
Preservative	0.02% Sodium Azide
Isotype	IgG
Purity	Immunogen affinity purified
Buffer	PBS (pH 7.2) and 40% Glycerol

Product Description

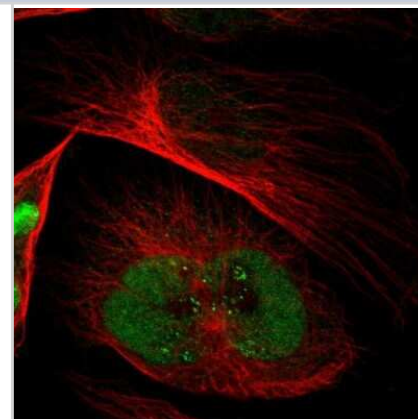
Description	Novus Biologicals Rabbit EMP2 Antibody - BSA Free (NBP1-86847) is a polyclonal antibody validated for use in IHC, WB and ICC/IF. Anti-EMP2 Antibody: Cited in 3 publications. All Novus Biologicals antibodies are covered by our 100% guarantee.
Host	Rabbit
Gene ID	2013
Gene Symbol	EMP2
Species	Human
Immunogen	This antibody was developed against Recombinant Protein corresponding to amino acids: DNAWWVGDEFFADVWRICTNNTNCTVINDSFQEYST

Product Application Details

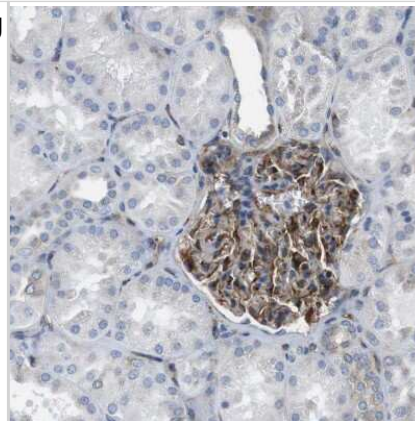
Applications	Western Blot, Immunohistochemistry-Paraffin, Immunocytochemistry/Immunofluorescence, Immunohistochemistry
Recommended Dilutions	Western Blot 0.04-0.4 ug/ml, Immunohistochemistry 1:50 - 1:200, Immunocytochemistry/ Immunofluorescence 0.25-2 ug/ml, Immunohistochemistry-Paraffin 1:50-1:200
Application Notes	For IHC-Paraffin, HIER pH 6 retrieval is recommended. ICC/IF Fixation Permeabilization, Use PFA/Triton X-100.

Images

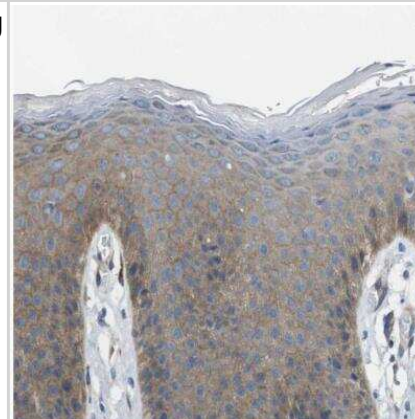
Immunocytochemistry/Immunofluorescence: EMP2 Antibody [NBP1-86847] - Staining of human cell line U-251 MG shows localization to nucleoplasm. Antibody staining is shown in green.



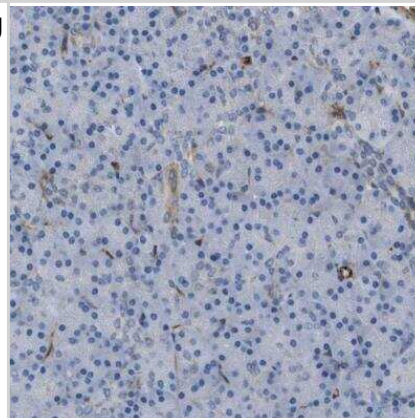
Immunohistochemistry-Paraffin: EMP2 Antibody [NBP1-86847] - Staining of human kidney shows moderate to strong cytoplasmic positivity in cells in glomeruli.



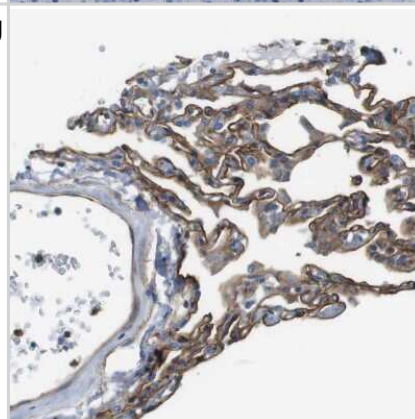
Immunohistochemistry-Paraffin: EMP2 Antibody [NBP1-86847] - Staining of human skin shows moderate to strong positivity in plasma membrane in keratinocytes.



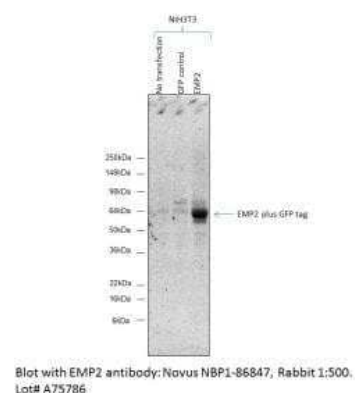
Immunohistochemistry-Paraffin: EMP2 Antibody [NBP1-86847] - Staining of human pancreas shows moderate to strong cytoplasmic positivity in exocrine glandular cells.



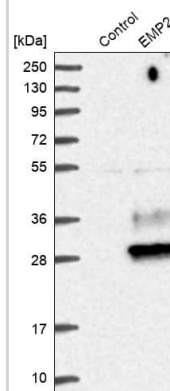
Immunohistochemistry-Paraffin: EMP2 Antibody [NBP1-86847] - Staining of human lung shows moderate to strong cytoplasmic positivity in pneumocytes.



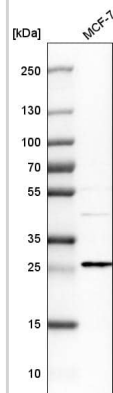
Western Blot: EMP2 Antibody [NBP1-86847] - Analysis of EMP2 in NIH/3T3 transfectant using anti-EMP2 antibody (1:500 dilution). Image from verified customer review.



Analysis in control (vector only transfected HEK293T lysate) and EMP2 over-expression lysate (Co-expressed with a C-terminal myc-DDK tag (~3.1 kDa) in mammalian HEK293T cells).



Analysis in human cell line MCF-7.



Publications

Li CF, Wu WJ, Wu WR et al. The cAMP responsive element binding protein 1 transactivates epithelial membrane protein 2, a potential tumor suppressor in the urinary bladder urothelial carcinoma. *Oncotarget* 2015-04-20 [PMID: 25940704] (IF/IHC, WB, Human)

Knepper J, Schierhorn KL, Becher A et al. The Novel Human Influenza A(H7N9) Virus Is Naturally Adapted to Efficient Growth in Human Lung Tissue. *mBio* 2013-10-08 [PMID: 24105764]

Chen YH, Wu LC, Wu WR et al. Loss of epithelial membrane protein-2 expression confers an independent prognosticator in nasopharyngeal carcinoma: a cohort study. *BMJ Open* 2012-04-01 [PMID: 22492389]



Novus Biologicals USA

10730 E. Briarwood Avenue
Centennial, CO 80112
USA
Phone: 303.730.1950
Toll Free: 1.888.506.6887
Fax: 303.730.1966
nb-customerservice@bio-techne.com

Bio-Techne Canada

21 Canmotor Ave
Toronto, ON M8Z 4E6
Canada
Phone: 905.827.6400
Toll Free: 855.668.8722
Fax: 905.827.6402
canada.inquires@bio-techne.com

Bio-Techne Ltd

19 Barton Lane
Abingdon Science Park
Abingdon, OX14 3NB, United Kingdom
Phone: (44) (0) 1235 529449
Free Phone: 0800 37 34 15
Fax: (44) (0) 1235 533420
info.EMEA@bio-techne.com

General Contact Information

www.novusbio.com
Technical Support: nb-technical@bio-techne.com
Orders: nb-customerservice@bio-techne.com
General: novus@novusbio.com

Products Related to NBP1-86847

NBP1-86847PEP	EMP2 Recombinant Protein Antigen
HAF008	Goat anti-Rabbit IgG Secondary Antibody [HRP]
NB7160	Goat anti-Rabbit IgG (H+L) Secondary Antibody [HRP]
NBP2-24891	Rabbit IgG Isotype Control

Limitations

This product is for research use only and is not approved for use in humans or in clinical diagnosis. Primary Antibodies are guaranteed for 1 year from date of receipt.

For more information on our 100% guarantee, please visit www.novusbio.com/guarantee

Earn gift cards/discounts by submitting a review: www.novusbio.com/reviews/submit/NBP1-86847

Earn gift cards/discounts by submitting a publication using this product:
www.novusbio.com/publications

