

Product Datasheet

EML4 Antibody - BSA Free

NBP1-86805

Unit Size: 0.1 ml

Store at 4C short term. Aliquot and store at -20C long term. Avoid freeze-thaw cycles.

www.novusbio.com



technical@novusbio.com

Publications: 4

Protocols, Publications, Related Products, Reviews, Research Tools and Images at:
www.novusbio.com/NBP1-86805

Updated 12/2/2025 v.20.1

Earn rewards for product
reviews and publications.

Submit a publication at www.novusbio.com/publications

Submit a review at www.novusbio.com/reviews/destination/NBP1-86805



NBP1-86805

EML4 Antibody - BSA Free

Product Information	
Unit Size	0.1 ml
Concentration	Concentrations vary lot to lot. See vial label for concentration. If unlisted please contact technical services.
Storage	Store at 4C short term. Aliquot and store at -20C long term. Avoid freeze-thaw cycles.
Clonality	Polyclonal
Preservative	0.02% Sodium Azide
Isotype	IgG
Purity	Affinity purified
Buffer	PBS (pH 7.2) and 40% Glycerol
Target Molecular Weight	109 kDa

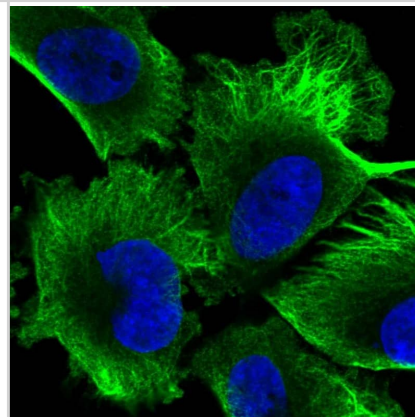
Product Description	
Description	Novus Biologicals Rabbit EML4 Antibody - BSA Free (NBP1-86805) is a polyclonal antibody validated for use in IHC, WB and ICC/IF. Anti-EML4 Antibody: Cited in 3 publications. All Novus Biologicals antibodies are covered by our 100% guarantee.
Host	Rabbit
Gene ID	27436
Gene Symbol	EML4
Species	Human
Immunogen	This antibody was developed against Recombinant Protein corresponding to amino acids: MSIIQWKLVEKLSLPQNETVADTTTLTKAPVSSSTESVIQSNTPTPPPSQPLNETAE EESRISSPTLLENSLEQTVPESEDHSEES

Product Application Details	
Applications	Western Blot, Immunohistochemistry-Paraffin, Immunocytochemistry/ Immunofluorescence, Immunohistochemistry
Recommended Dilutions	Western Blot 0.04-0.4 ug/ml, Immunohistochemistry 1:1000 - 1:2500, Immunocytochemistry/ Immunofluorescence 0.25-2 ug/ml, Immunohistochemistry-Paraffin 1:1000 - 1:2500
Application Notes	For IHC-Paraffin, HIER pH 6 retrieval is recommended. ICC/IF, Fixation Permeabilization: Use PFA/Triton X-100.

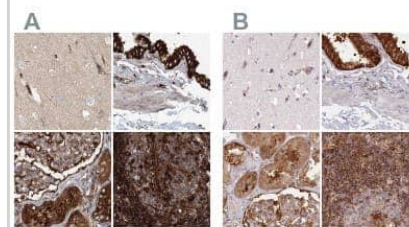


Images

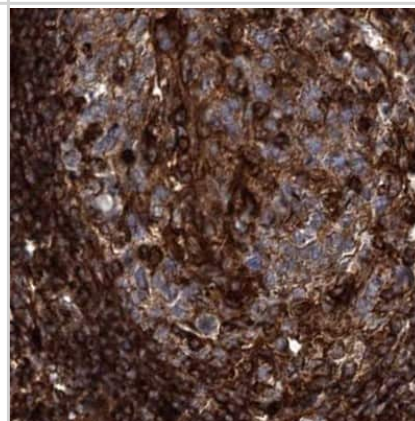
Staining of human cell line U-251 MG shows localization to cytosol, intermediate filaments & microtubules.



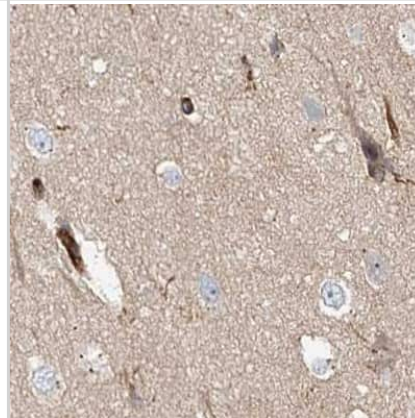
Immunohistochemistry-Paraffin: EML4 Antibody [NBP1-86805] - Staining of human cerebral cortex, gallbladder, kidney and lymph node using Anti-EML4 antibody NBP1-86805 (A) shows similar protein distribution across tissues to independent antibody NBP2-38319 (B).



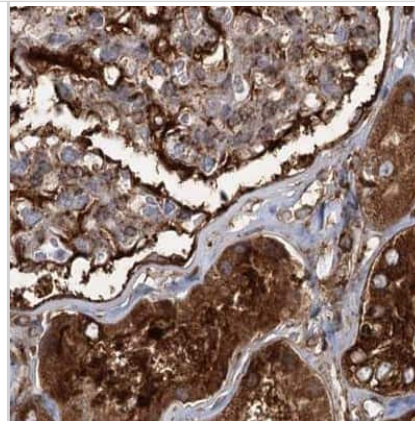
Immunohistochemistry-Paraffin: EML4 Antibody [NBP1-86805] - Staining of human lymph node.



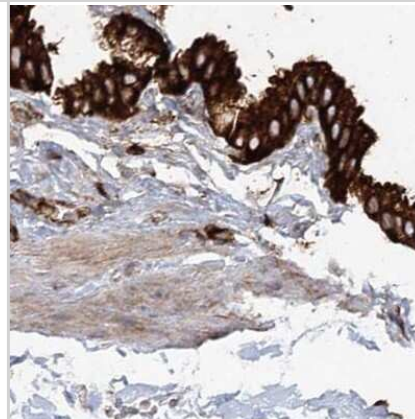
Immunohistochemistry-Paraffin: EML4 Antibody [NBP1-86805] - Staining of human cerebral cortex.



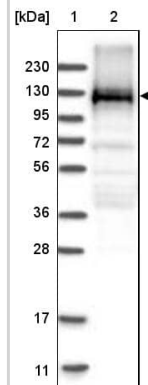
Immunohistochemistry-Paraffin: EML4 Antibody [NBP1-86805] - Staining of human kidney.



Immunohistochemistry-Paraffin: EML4 Antibody [NBP1-86805] - Staining of human gallbladder.



Lane 1: Marker [kDa] 230, 130, 95, 72, 56, 36, 28, 17, 11
Lane 2: Human cell line RT-4



Publications

Yigit B, Tufekci D, Viola V et al. Loss of Eml1 alters microtubule-associated protein networks in mouse brain heterotopia. *Communications Biology* 2025-07-03 [PMID: 40610677]

Madgwick A, Fort P, Hanson PS et al. Neural Differentiation Modulates the Vertebrate Brain Specific Splicing Program. *PLoS One* 2015-01-01 [PMID: 25993117] (WB, Human)

Schoppmann SF, Streubel B, Birner P. Amplification but not translocation of anaplastic lymphoma kinase is a frequent event in oesophageal cancer *Eur J Cancer* 2013-03-11 [PMID: 23490651] (IF/IHC, Human)

Preusser M, Berghoff AS, Ilhan-Mutlu A et al. ALK gene translocations and amplifications in brain metastases of non-small cell lung cancer. *Lung Cancer* 2013-02-27 [PMID: 23453647] (IHC-P, Human)



Novus Biologicals USA

10730 E. Briarwood Avenue
Centennial, CO 80112
USA
Phone: 303.730.1950
Toll Free: 1.888.506.6887
Fax: 303.730.1966
nb-customerservice@bio-techne.com

Bio-Techne Canada

21 Canmotor Ave
Toronto, ON M8Z 4E6
Canada
Phone: 905.827.6400
Toll Free: 855.668.8722
Fax: 905.827.6402
canada.inquires@bio-techne.com

Bio-Techne Ltd

19 Barton Lane
Abingdon Science Park
Abingdon, OX14 3NB, United Kingdom
Phone: (44) (0) 1235 529449
Free Phone: 0800 37 34 15
Fax: (44) (0) 1235 533420
info.EMEA@bio-techne.com

General Contact Information

www.novusbio.com
Technical Support: nb-technical@bio-techne.com
Orders: nb-customerservice@bio-techne.com
General: novus@novusbio.com

Products Related to NBP1-86805

NB820-59233	Human Liver Whole Tissue Lysate (Adult Whole Normal)
NBP1-86805PEP	EML4 Recombinant Protein Antigen
NBP2-33376H	Blue Marker Antibody (6F4-F6) [HRP]
HAF008	Goat anti-Rabbit IgG Secondary Antibody [HRP]
NB7160	Goat anti-Rabbit IgG (H+L) Secondary Antibody [HRP]
NBP2-24891	Rabbit IgG Isotype Control

Limitations

This product is for research use only and is not approved for use in humans or in clinical diagnosis. Primary Antibodies are guaranteed for 1 year from date of receipt.

For more information on our 100% guarantee, please visit www.novusbio.com/guarantee

Earn gift cards/discounts by submitting a review: www.novusbio.com/reviews/submit/NBP1-86805

Earn gift cards/discounts by submitting a publication using this product:
www.novusbio.com/publications



