

Product Datasheet

gamma-Glutamylcyclotransferase/CRF21/GGCT Antibody - BSA Free NBP1-86727

Unit Size: 0.1 ml

Store at 4C short term. Aliquot and store at -20C long term. Avoid freeze-thaw cycles.

www.novusbio.com



technical@novusbio.com

Publications: 2

Protocols, Publications, Related Products, Reviews, Research Tools and Images at:
www.novusbio.com/NBP1-86727

Updated 2/21/2025 v.20.1

**Earn rewards for product
reviews and publications.**

Submit a publication at www.novusbio.com/publications

Submit a review at www.novusbio.com/reviews/destination/NBP1-86727



NBP1-86727

gamma-Glutamylcyclotransferase/CRF21/GGCT Antibody - BSA Free

Product Information	
Unit Size	0.1 ml
Concentration	Concentrations vary lot to lot. See vial label for concentration. If unlisted please contact technical services.
Storage	Store at 4C short term. Aliquot and store at -20C long term. Avoid freeze-thaw cycles.
Clonality	Polyclonal
Preservative	0.02% Sodium Azide
Isotype	IgG
Purity	Immunogen affinity purified
Buffer	PBS (pH 7.2) and 40% Glycerol
Target Molecular Weight	21 kDa

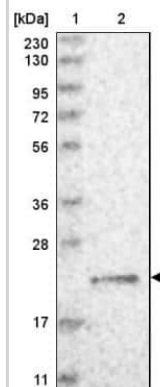
Product Description	
Host	Rabbit
Gene ID	79017
Gene Symbol	GGCT
Species	Human
Reactivity Notes	Immunogen displays the following percentage of sequence identity for non-tested species: Mouse (80%), Rat (83%). Reactivity reported in scientific literature (PMID: 22205682)
Immunogen	This antibody was developed against Recombinant Protein corresponding to amino acids: NSGCKDVTGPDEESFLYFAYGSNLLTERIHLRNPSAAFFCVARLQDFKLDFGNS QGKTSQTWHGGIATIFQSPGDEVWGVVWKMNKSNLNSLDE

Product Application Details	
Applications	Western Blot, Immunohistochemistry, Immunohistochemistry-Paraffin
Recommended Dilutions	Western Blot 0.04-0.4 ug/ml, Immunohistochemistry 1:20 - 1:50, Immunohistochemistry-Paraffin 1:20 - 1:50
Application Notes	For IHC-Paraffin, HIER pH 6 retrieval is recommended.

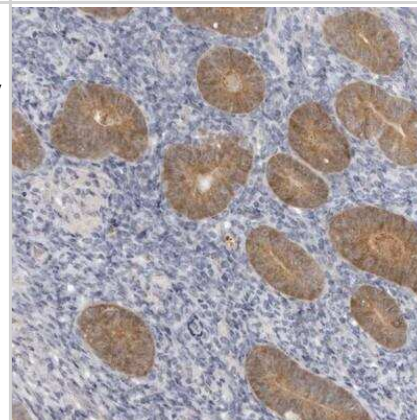


Images

Western Blot: gamma-Glutamylcyclotransferase/CRF21/GGCT Antibody [NBP1-86727] - Lane 1: Marker [kDa] 230, 130, 95, 72, 56, 36, 28, 17, 11. Lane 2: Human cell line RT-231



Immunohistochemistry-Paraffin: gamma-Glutamylcyclotransferase/CRF21/GGCT Antibody [NBP1-86727] - Staining of human corpus, uterine shows moderate cytoplasmic positivity in glandular cells.



Publications

Amano T, Eishi Y, Yamada T et al. Widespread Expression of gamma-Glutamyl Cyclotransferase Suggests It Is Not a General Tumor Marker. J Histochem Cytochem 2012-01-01 [PMID: 22205682]

Gromov P, Gromova I, Friis E et al. Proteomic profiling of mammary carcinomas identifies C7orf24, a gamma-glutamyl cyclotransferase, as a potential cancer biomarker. J Proteome Res 2010-08-01 [PMID: 20527979]



Novus Biologicals USA

10730 E. Briarwood Avenue
Centennial, CO 80112
USA
Phone: 303.730.1950
Toll Free: 1.888.506.6887
Fax: 303.730.1966
nb-customerservice@bio-techne.com

Bio-Techne Canada

21 Canmotor Ave
Toronto, ON M8Z 4E6
Canada
Phone: 905.827.6400
Toll Free: 855.668.8722
Fax: 905.827.6402
canada.inquires@bio-techne.com

Bio-Techne Ltd

19 Barton Lane
Abingdon Science Park
Abingdon, OX14 3NB, United Kingdom
Phone: (44) (0) 1235 529449
Free Phone: 0800 37 34 15
Fax: (44) (0) 1235 533420
info.EMEA@bio-techne.com

General Contact Information

www.novusbio.com
Technical Support: nb-technical@bio-techne.com
Orders: nb-customerservice@bio-techne.com
General: novus@novusbio.com

Products Related to NBP1-86727

NBP1-86727PEP	gamma-Glutamylcyclotransferase/CRF21/GGCT Recombinant Protein Antigen
HAF008	Goat anti-Rabbit IgG Secondary Antibody [HRP]
NB7160	Goat anti-Rabbit IgG (H+L) Secondary Antibody [HRP]
NBP2-24891	Rabbit IgG Isotype Control

Limitations

This product is for research use only and is not approved for use in humans or in clinical diagnosis. Primary Antibodies are guaranteed for 1 year from date of receipt.

For more information on our 100% guarantee, please visit www.novusbio.com/guarantee

Earn gift cards/discounts by submitting a review: www.novusbio.com/reviews/submit/NBP1-86727

Earn gift cards/discounts by submitting a publication using this product:
www.novusbio.com/publications

