

Product Datasheet

TAX1BP1 Antibody - BSA Free NBP1-86662

Unit Size: 0.1 ml

Store at 4C short term. Aliquot and store at -20C long term. Avoid freeze-thaw cycles.

www.novusbio.com



technical@novusbio.com

Publications: 3

Protocols, Publications, Related Products, Reviews, Research Tools and Images at:
www.novusbio.com/NBP1-86662

Updated 2/21/2025 v.20.1

Earn rewards for product
reviews and publications.

Submit a publication at www.novusbio.com/publications

Submit a review at www.novusbio.com/reviews/destination/NBP1-86662



NBP1-86662

TAX1BP1 Antibody - BSA Free

| Product Information | |
|----------------------|--|
| Unit Size | 0.1 ml |
| Concentration | Concentrations vary lot to lot. See vial label for concentration. If unlisted please contact technical services. |
| Storage | Store at 4C short term. Aliquot and store at -20C long term. Avoid freeze-thaw cycles. |
| Clonality | Polyclonal |
| Preservative | 0.02% Sodium Azide |
| Isotype | IgG |
| Purity | Immunogen affinity purified |
| Buffer | PBS (pH 7.2) and 40% Glycerol |

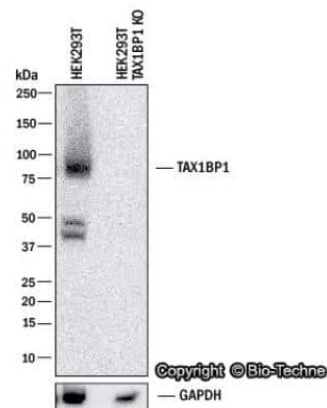
| Product Description | |
|-------------------------|--|
| Host | Rabbit |
| Gene ID | 8887 |
| Gene Symbol | TAX1BP1 |
| Species | Human |
| Reactivity Notes | Immunogen displays the following percentage of sequence identity for non-tested species: Mouse (80%). |
| Immunogen | This antibody was developed against Recombinant Protein corresponding to amino acids: ADAVAELKLNAMKKDQDKDTLEHELRRVEDLKLRLQMAADHYKEKFKECQ RLQKQINKLSDQSANNNNVFTKKTGNQQK VNDASVNTDPATSASTVDVKPSPS AAEADFIVTKGQVCEMTKEIADKTEKYNK |

| Product Application Details | |
|------------------------------|--|
| Applications | Western Blot, Immunocytochemistry/ Immunofluorescence, Immunohistochemistry, Immunohistochemistry-Paraffin, Knockdown Validated, Knockout Validated |
| Recommended Dilutions | Western Blot 0.1 - 1.0 ug/ml, Immunohistochemistry 1:50 - 1:200, Immunocytochemistry/ Immunofluorescence 0.25-2 ug/ml, Immunohistochemistry-Paraffin 1:50 - 1:200, Knockout Validated, Knockdown Validated |
| Application Notes | For IHC-Paraffin, HIER pH 6 retrieval is recommended. ICC/IF Fixation Permeabilization: Use PFA/Triton X-100. |

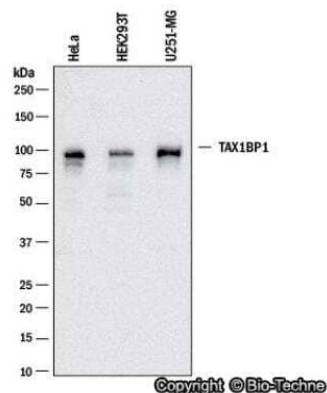


Images

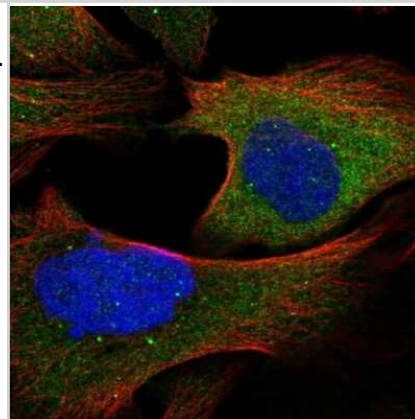
Western Blot: TAX1BP1 Antibody [NBP1-86662] - Western blot shows lysates of HEK293T human embryonic kidney parental cell line and TAX1BP1 knockout (KO) HEK293T cell line. PVDF membrane was probed with 1.0 ug/ml of Rabbit Anti-Human TAX1BP1 Polyclonal Antibody (Catalog # NBP1-86662) followed by HRP-conjugated Anti-Rabbit IgG Secondary Antibody (Catalog #HAF008). Specific band was detected for TAX1BP1 at approximately 90 kDa (as indicated) in the parental HEK293T cell line, but is not detectable in the knockout HEK293T cell line. This experiment was conducted under reducing conditions.



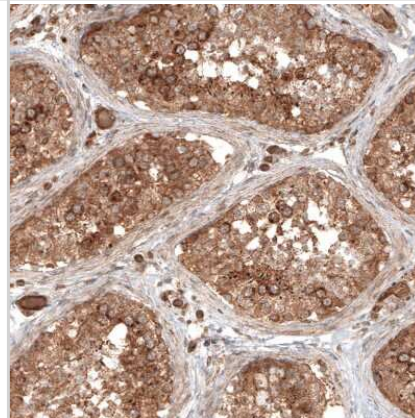
Western Blot: TAX1BP1 Antibody [NBP1-86662] - Western blot shows lysates of HeLa, HEK293T and U251-MG cell lines. PVDF membrane was probed with 0.1 ug/ml of Rabbit Anti-Human TAX1BP1 Polyclonal Antibody (Catalog # NBP1-86662) followed by HRP-conjugated Anti-Rabbit IgG Secondary Antibody (Catalog #HAF008). Specific band was detected for TAX1BP1 at approximately 90 kDa (as indicated). This experiment was conducted under reducing conditions.



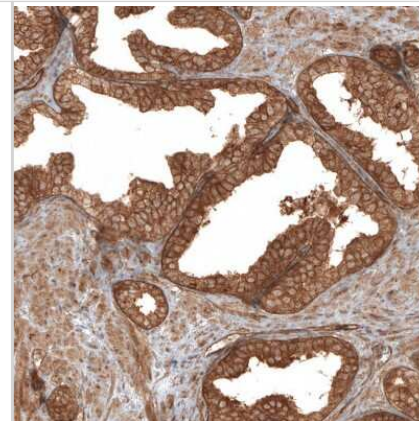
Immunocytochemistry/Immunofluorescence: TAX1BP1 Antibody [NBP1-86662] - Staining of human cell line U-2 OS shows localization to cytosol. Antibody staining is shown in green.



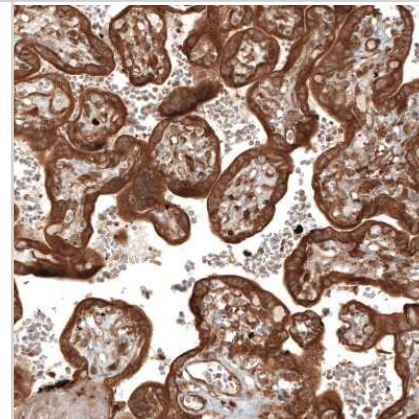
Immunohistochemistry-Paraffin: TAX1BP1 Antibody [NBP1-86662] - Staining of human testis shows strong cytoplasmic positivity in cells in seminiferous ducts.



Immunohistochemistry-Paraffin: TAX1BP1 Antibody [NBP1-86662] - Staining of human prostate shows strong cytoplasmic positivity in glandular cells.



Immunohistochemistry-Paraffin: TAX1BP1 Antibody [NBP1-86662] - Staining of human placenta shows strong cytoplasmic positivity in trophoblastic cells.



Publications

Shireen S, Hetal S, Gil K et al. Loss of TAX1BP1-Directed Autophagy Results in Protein Aggregate Accumulation in the Brain. *Mol Cell*. 2020-11-17 [PMID: 33207181]

Stadler C, Rexhepaj E, Singan VR et al. Immunofluorescence and fluorescent-protein tagging show high correlation for protein localization in mammalian cells. *Nat Methods* 2013-04-01 [PMID: 23435261]

Newman AC, Scholefield CL, Kemp AJ et al. TBK1 Kinase Addiction in Lung Cancer Cells Is Mediated via Autophagy of Tax1bp1/Ndp52 and Non-Canonical NF-kappa Signalling. *PLoS One* 2012-01-01 [PMID: 23209807]



Novus Biologicals USA

10730 E. Briarwood Avenue
Centennial, CO 80112
USA
Phone: 303.730.1950
Toll Free: 1.888.506.6887
Fax: 303.730.1966
nb-customerservice@bio-techne.com

Bio-Techne Canada

21 Canmotor Ave
Toronto, ON M8Z 4E6
Canada
Phone: 905.827.6400
Toll Free: 855.668.8722
Fax: 905.827.6402
canada.inquires@bio-techne.com

Bio-Techne Ltd

19 Barton Lane
Abingdon Science Park
Abingdon, OX14 3NB, United Kingdom
Phone: (44) (0) 1235 529449
Free Phone: 0800 37 34 15
Fax: (44) (0) 1235 533420
info.EMEA@bio-techne.com

General Contact Information

www.novusbio.com
Technical Support: nb-technical@bio-techne.com
Orders: nb-customerservice@bio-techne.com
General: novus@novusbio.com

Products Related to NBP1-86662

| | |
|---------------|---|
| NBP1-86662PEP | TAX1BP1 Recombinant Protein Antigen |
| HAF008 | Goat anti-Rabbit IgG Secondary Antibody [HRP] |
| NB7160 | Goat anti-Rabbit IgG (H+L) Secondary Antibody [HRP] |
| NBP2-24891 | Rabbit IgG Isotype Control |

Limitations

This product is for research use only and is not approved for use in humans or in clinical diagnosis. Primary Antibodies are guaranteed for 1 year from date of receipt.

For more information on our 100% guarantee, please visit www.novusbio.com/guarantee

Earn gift cards/discounts by submitting a review: www.novusbio.com/reviews/submit/NBP1-86662

Earn gift cards/discounts by submitting a publication using this product:
www.novusbio.com/publications

