

# Product Datasheet

## MTF1 Antibody - BSA Free NBP1-86379

Unit Size: 0.1 ml

Store at 4C short term. Aliquot and store at -20C long term. Avoid freeze-thaw cycles.

[www.novusbio.com](http://www.novusbio.com)



[technical@novusbio.com](mailto:technical@novusbio.com)

### Publications: 1

Protocols, Publications, Related Products, Reviews, Research Tools and Images at:  
[www.novusbio.com/NBP1-86379](http://www.novusbio.com/NBP1-86379)

Updated 12/2/2025 v.20.1

Earn rewards for product  
reviews and publications.

Submit a publication at [www.novusbio.com/publications](http://www.novusbio.com/publications)

Submit a review at [www.novusbio.com/reviews/destination/NBP1-86379](http://www.novusbio.com/reviews/destination/NBP1-86379)



**NBP1-86379**

MTF1 Antibody - BSA Free

Product Information	
<b>Unit Size</b>	0.1 ml
<b>Concentration</b>	Concentrations vary lot to lot. See vial label for concentration. If unlisted please contact technical services.
<b>Storage</b>	Store at 4C short term. Aliquot and store at -20C long term. Avoid freeze-thaw cycles.
<b>Clonality</b>	Polyclonal
<b>Preservative</b>	0.02% Sodium Azide
<b>Isotype</b>	IgG
<b>Purity</b>	Affinity purified
<b>Buffer</b>	PBS (pH 7.2) and 40% Glycerol

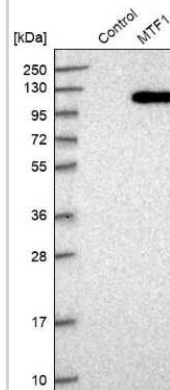
Product Description	
<b>Description</b>	Novus Biologicals Rabbit MTF1 Antibody - BSA Free (NBP1-86379) is a polyclonal antibody validated for use in IHC, WB and ICC/IF. Anti-MTF1 Antibody: Cited in 1 publication. All Novus Biologicals antibodies are covered by our 100% guarantee.
<b>Host</b>	Rabbit
<b>Gene ID</b>	4520
<b>Gene Symbol</b>	MTF1
<b>Species</b>	Human
<b>Immunogen</b>	This antibody was developed against Recombinant Protein corresponding to amino acids: HLPFLVGGEEGFHLIDHEAMSQGYVQHIISPDQIHLTINPGSTPMPRNIEGATLT LQSECPETKRKEVK

Product Application Details	
<b>Applications</b>	Western Blot, Immunohistochemistry-Paraffin, Immunocytochemistry/ Immunofluorescence, Immunohistochemistry, Chromatin Immunoprecipitation-exo-Seq
<b>Recommended Dilutions</b>	Western Blot 0.04-0.4 ug/ml, Immunohistochemistry 1:20 - 1:50, Immunocytochemistry/ Immunofluorescence 0.25-2 ug/ml, Immunohistochemistry-Paraffin 1:20 - 1:50, Chromatin Immunoprecipitation-exo-Seq 1-10ug per reaction
<b>Application Notes</b>	For IHC-Paraffin, HIER pH 6 retrieval is recommended. ICC/IF Fixation Permeabilization: Use PFA/Triton X-100.

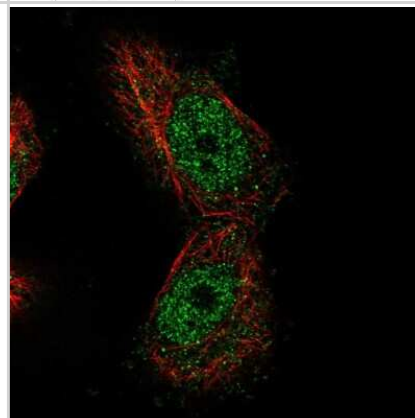


## Images

Western Blot: MTF1 Antibody [NBP1-86379] - Analysis in control (vector only transfected HEK293T lysate) and MTF1 over-expression lysate (Co-expressed with a C-terminal myc-DDK tag (3.1 kDa) in mammalian HEK293T cells).

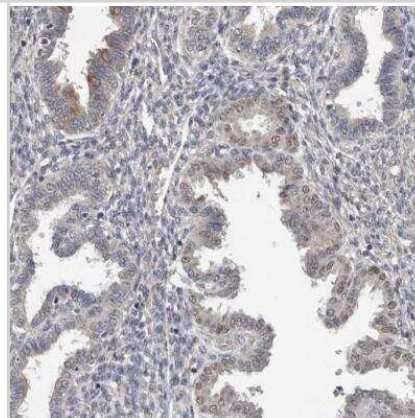


Immunocytochemistry/Immunofluorescence: MTF1 Antibody [NBP1-86379] - Staining of human cell line U-251 MG shows localization to nucleoplasm. Antibody staining is shown in green.

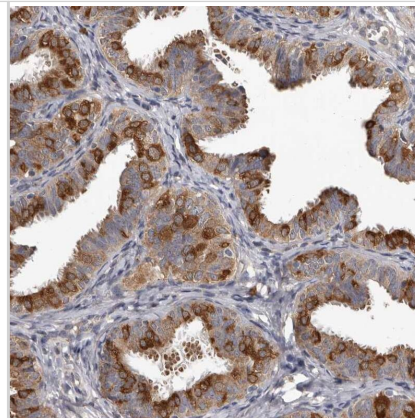


Immunohistochemistry-Paraffin: MTF1 Antibody [NBP1-86379] - Staining of human pancreas shows weak cytoplasmic positivity in exocrine glandular cells. ✘

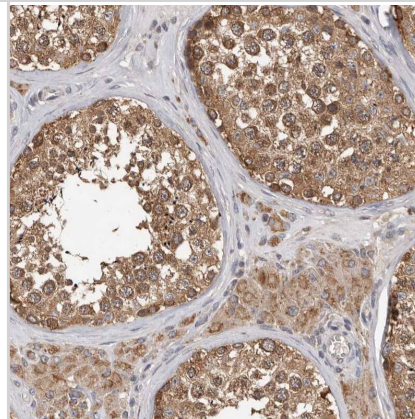
Immunohistochemistry-Paraffin: MTF1 Antibody [NBP1-86379] - Staining of human endometrium shows weak positivity in nuclear membrane in glandular cells.



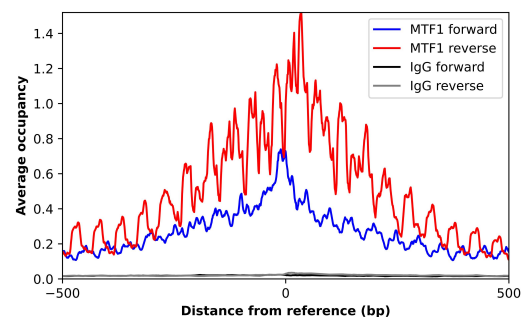
Staining of human fallopian tube shows strong cytoplasmic positivity in glandular cells.



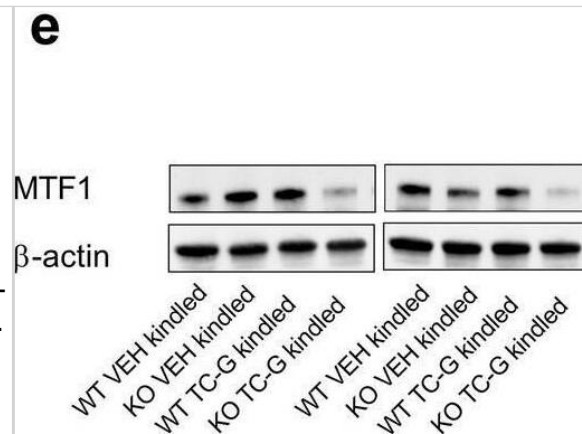
Staining of human testis shows strong cytoplasmic positivity in cells in seminiferous ducts.



ChIP-Exo-Seq composite graph for Anti-MTF1 (NBP1-86379) tested in K562 cells. Strand-specific reads (blue: forward, red: reverse) and IgG controls (black: forward, grey: reverse) are plotted against the distance from a composite set of reference binding sites. The antibody exhibits robust target enrichment compared to a non-specific IgG control and precisely reveals its structural organization around the binding site. Data generated by Prof. B. F. Pugh's Lab at Cornell University.



The effects of PTZ-kindling in GPR39 KO or WT mice and chronic treatment with TC-G 1008 (10 mg/kg) on zinc levels in serum and hippocampus. a The PTZ kindling in GPR39 KO or WT (C57BL/6/Tar × CBA/Tar) mice consisted of 14 injections of PTZ (25 mg/kg). The biochemical analyses were performed 24 h after the last PTZ injection. b Total zinc (protein bound and [Zn<sup>2+</sup>]) was measured in serum by ICP-OES. Data are expressed as means ± SEM. n = 8 WT VEH, n = 6 WT TC-G 1008, n = 7 KO VEH, n = 7 KO TC-G 1008. c Total zinc was analyzed semi-quantitatively in coronal hippocampal sections by LA-ICP-MS. Data are expressed as means ± SEM of counts per second (CPS). n = 4 in each group. d The protein expression level of the putative [Zn<sup>2+</sup>] sensor, metal regulatory transcription factor 1 (MTF1), was analyzed in the hippocampus. The results (means ± SEM) are presented as the MTF1/β-actin ratio. n = 7 in each group. e Representative blots of MTF1. The observed band (~ 130 kDa). f-h [Zn<sup>2+</sup>] was examined in coronal hippocampal sections by a cell-membrane permeable probe, Zinpyr-1 (ZP-1). The mean ZP-1 grey values ratio between mouse sections in the CA3, CA1, or dentate gyrus (DG) regions of the hippocampus is shown. n = 6 WT VEH, n = 6 WT TC-G 1008, n = 5 KO VEH, n = 6 KO TC-G 1008. i A greyscale image of the hippocampal section after staining with ZP-1. p values were determined by two-way ANOVA and Bonferroni's multiple comparison test. \*p < 0.05 Image collected and cropped by CiteAb from the following open publication (<https://pubmed.ncbi.nlm.nih.gov/37185787>), licensed under a CC-BY license. Not internally tested by Novus Biologicals.



## Publications

Doboszewska U, Soca? a K, Pieróg M et al. TC-G 1008 facilitates epileptogenesis by acting selectively at the GPR39 receptor but non-selectively activates CREB in the hippocampus of pentylentetrazole-kindled mice *Cellular and Molecular Life Sciences* 2023-05-01 [PMID: 37185787]



### **Novus Biologicals USA**

10730 E. Briarwood Avenue  
Centennial, CO 80112  
USA  
Phone: 303.730.1950  
Toll Free: 1.888.506.6887  
Fax: 303.730.1966  
nb-customerservice@bio-techne.com

### **Bio-Techne Canada**

21 Canmotor Ave  
Toronto, ON M8Z 4E6  
Canada  
Phone: 905.827.6400  
Toll Free: 855.668.8722  
Fax: 905.827.6402  
canada.inquires@bio-techne.com

### **Bio-Techne Ltd**

19 Barton Lane  
Abingdon Science Park  
Abingdon, OX14 3NB, United Kingdom  
Phone: (44) (0) 1235 529449  
Free Phone: 0800 37 34 15  
Fax: (44) (0) 1235 533420  
info.EMEA@bio-techne.com

### **General Contact Information**

www.novusbio.com  
Technical Support: nb-technical@bio-techne.com  
Orders: nb-customerservice@bio-techne.com  
General: novus@novusbio.com

### **Products Related to NBP1-86379**

---

NBP1-86379PEP	MTF1 Recombinant Protein Antigen
NBP2-33376H	Blue Marker Antibody (6F4-F6) [HRP]
HAF008	Goat anti-Rabbit IgG Secondary Antibody [HRP]
NB7160	Goat anti-Rabbit IgG (H+L) Secondary Antibody [HRP]
NBP2-24891	Rabbit IgG Isotype Control

---

### **Limitations**

This product is for research use only and is not approved for use in humans or in clinical diagnosis. Primary Antibodies are guaranteed for 1 year from date of receipt.

For more information on our 100% guarantee, please visit [www.novusbio.com/guarantee](http://www.novusbio.com/guarantee)

Earn gift cards/discounts by submitting a review: [www.novusbio.com/reviews/submit/NBP1-86379](http://www.novusbio.com/reviews/submit/NBP1-86379)

Earn gift cards/discounts by submitting a publication using this product:  
[www.novusbio.com/publications](http://www.novusbio.com/publications)

