

Product Datasheet

CD39L4/ENTPD5 Antibody - BSA Free NBP1-85751

Unit Size: 0.1 ml

Store at 4C short term. Aliquot and store at -20C long term. Avoid freeze-thaw cycles.

www.novusbio.com



technical@novusbio.com

Publications: 1

Protocols, Publications, Related Products, Reviews, Research Tools and Images at:
www.novusbio.com/NBP1-85751

Updated 9/9/2025 v.20.1

Earn rewards for product
reviews and publications.

Submit a publication at www.novusbio.com/publications

Submit a review at www.novusbio.com/reviews/destination/NBP1-85751



NBP1-85751

CD39L4/ENTPD5 Antibody - BSA Free

Product Information	
Unit Size	0.1 ml
Concentration	Concentrations vary lot to lot. See vial label for concentration. If unlisted please contact technical services.
Storage	Store at 4C short term. Aliquot and store at -20C long term. Avoid freeze-thaw cycles.
Clonality	Polyclonal
Preservative	0.02% Sodium Azide
Isotype	IgG
Purity	Immunogen affinity purified
Buffer	PBS (pH 7.2) and 40% Glycerol

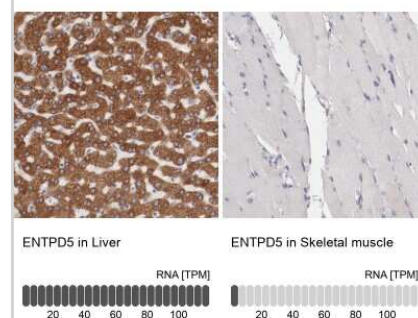
Product Description	
Description	Novus Biologicals Rabbit CD39L4/ENTPD5 Antibody - BSA Free (NBP1-85751) is a polyclonal antibody validated for use in IHC, WB and Simple Western. Anti-CD39L4/ENTPD5 Antibody: Cited in 1 publication. All Novus Biologicals antibodies are covered by our 100% guarantee.
Host	Rabbit
Gene ID	957
Gene Symbol	ENTPD5
Species	Human
Reactivity Notes	Immunogen displays the following percentage of sequence identity for non-tested species: Mouse (88%), Rat (87%). Reactivity reported in scientific literature (PMID: 24435307)
Immunogen	This antibody was developed against Recombinant Protein corresponding to amino acids: AGSTGTRIHVYTFVQKMPGQLPILEGEVFDVSVKPLSAFVDQPKQGAETVQGL LEVAKDSIPRSHWKKTPVVLKATAGLRLLPEHKAKALLFEVKEIFRKSPFLVPKG SVSIMDGSDEGILAWVTVNFLTGQLHGHRQETVGTL

Product Application Details	
Applications	Western Blot, Simple Western, Immunohistochemistry-Paraffin, Immunohistochemistry
Recommended Dilutions	Western Blot 0.04-0.4 ug/ml, Simple Western 1:25, Immunohistochemistry 1:50 - 1:200, Immunohistochemistry-Paraffin 1:50 - 1:200
Application Notes	For IHC-Paraffin, HIER pH 6 retrieval is recommended. In Simple Western only 10 - 15 uL of the recommended dilution is used per data point. See Simple Western Antibody Database for Simple Western validation: Tested in h. Liver lysate(s), separated by Size, antibody dilution of 1:25, apparent MW was 57 kDa.

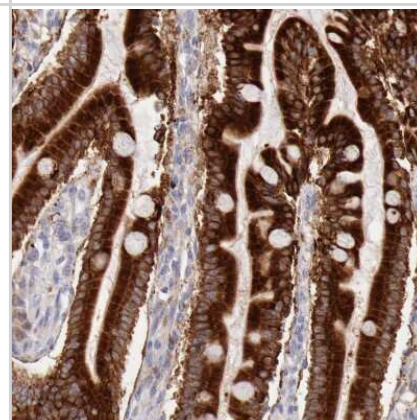


Images

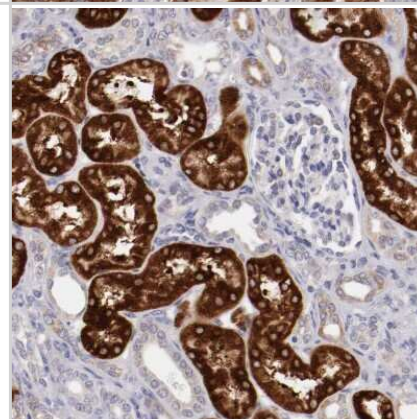
Immunohistochemistry-Paraffin: CD39L4/ENTPD5 Antibody [NBP1-85751] - Analysis in human liver and skeletal muscle tissues using NBP1-85751 antibody. Corresponding ENTPD5 RNA-seq data are presented for the same tissues.



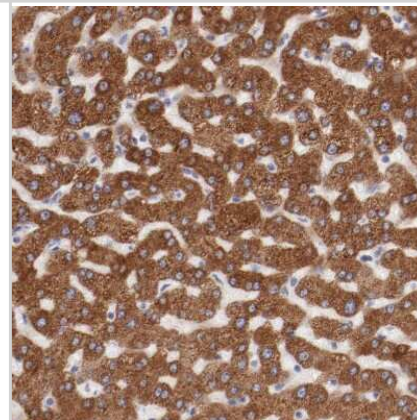
Immunohistochemistry-Paraffin: CD39L4/ENTPD5 Antibody [NBP1-85751] - Staining of human duodenum shows strong cytoplasmic positivity in glandular cells.



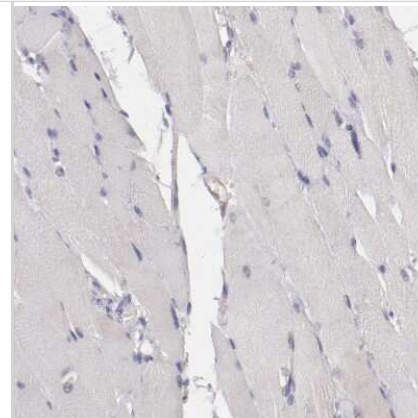
Immunohistochemistry-Paraffin: CD39L4/ENTPD5 Antibody [NBP1-85751] - Staining of human kidney shows strong cytoplasmic positivity in cells in proximal tubules.



Immunohistochemistry-Paraffin: CD39L4/ENTPD5 Antibody [NBP1-85751] - Staining of human liver shows strong cytoplasmic positivity in hepatocytes.



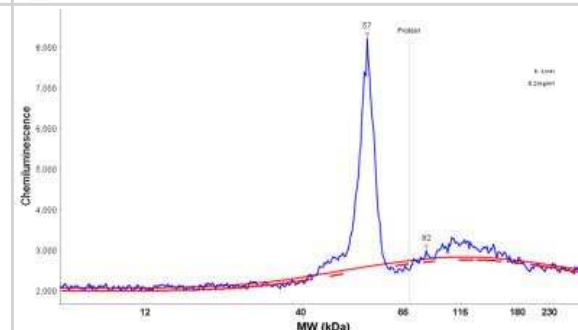
Immunohistochemistry-Paraffin: CD39L4/ENTPD5 Antibody [NBP1-85751] - Staining of human skeletal muscle shows no positivity in myocytes as expected.



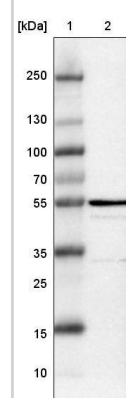
Simple Western: CD39L4/ENTPD5 Antibody [NBP1-85751] - Simple Western lane view shows a specific band for CD39L4/ENTPD5 in 0.2 mg/ml of h. Liver lysate(s). This experiment was performed under reducing conditions using the 12-230 kDa separation system.



Simple Western: CD39L4/ENTPD5 Antibody [NBP1-85751] - Electropherogram image of the corresponding Simple Western lane view. CD39L4/ENTPD5 antibody was used at 1:25 dilution on h. Liver lysate(s) respectively.



Lane 1: Marker [kDa] 250, 130, 100, 70, 55, 35, 25, 15, 10
Lane 2: Human Liver tissue



Publications

Horak P, Tomasich E, Vanhara P et al. TUSC3 Loss Alters the ER Stress Response and Accelerates Prostate Cancer Growth in vivo. Sci Rep 2014-01-17 [PMID: 24435307]



Novus Biologicals USA

10730 E. Briarwood Avenue
Centennial, CO 80112
USA
Phone: 303.730.1950
Toll Free: 1.888.506.6887
Fax: 303.730.1966
nb-customerservice@bio-techne.com

Bio-Techne Canada

21 Canmotor Ave
Toronto, ON M8Z 4E6
Canada
Phone: 905.827.6400
Toll Free: 855.668.8722
Fax: 905.827.6402
canada.inquires@bio-techne.com

Bio-Techne Ltd

19 Barton Lane
Abingdon Science Park
Abingdon, OX14 3NB, United Kingdom
Phone: (44) (0) 1235 529449
Free Phone: 0800 37 34 15
Fax: (44) (0) 1235 533420
info.EMEA@bio-techne.com

General Contact Information

www.novusbio.com
Technical Support: nb-technical@bio-techne.com
Orders: nb-customerservice@bio-techne.com
General: novus@novusbio.com

Products Related to NBP1-85751

NBP1-85751PEP	CD39L4/ENTPD5 Recombinant Protein Antigen
HAF008	Goat anti-Rabbit IgG Secondary Antibody [HRP]
NB7160	Goat anti-Rabbit IgG (H+L) Secondary Antibody [HRP]
NBP2-24891	Rabbit IgG Isotype Control

Limitations

This product is for research use only and is not approved for use in humans or in clinical diagnosis. Primary Antibodies are guaranteed for 1 year from date of receipt.

For more information on our 100% guarantee, please visit www.novusbio.com/guarantee

Earn gift cards/discounts by submitting a review: www.novusbio.com/reviews/submit/NBP1-85751

Earn gift cards/discounts by submitting a publication using this product:
www.novusbio.com/publications

