

Product Datasheet

Carboxylesterase 1/CES1 Antibody - BSA Free NBP1-85691

Unit Size: 0.1 ml

Store at 4C short term. Aliquot and store at -20C long term. Avoid freeze-thaw cycles.

www.novusbio.com



technical@novusbio.com

Protocols, Publications, Related Products, Reviews, Research Tools and Images at:
www.novusbio.com/NBP1-85691

Updated 2/21/2025 v.20.1

Earn rewards for product
reviews and publications.

Submit a publication at www.novusbio.com/publications

Submit a review at www.novusbio.com/reviews/destination/NBP1-85691



NBP1-85691

Carboxylesterase 1/CES1 Antibody - BSA Free

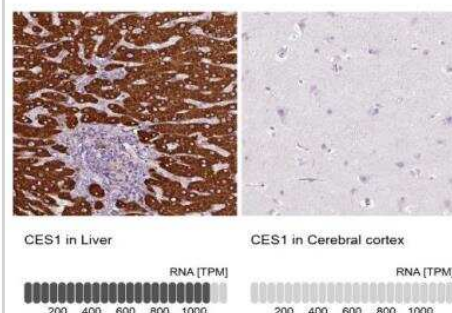
Product Information	
Unit Size	0.1 ml
Concentration	Concentrations vary lot to lot. See vial label for concentration. If unlisted please contact technical services.
Storage	Store at 4C short term. Aliquot and store at -20C long term. Avoid freeze-thaw cycles.
Clonality	Polyclonal
Preservative	0.02% Sodium Azide
Isotype	IgG
Purity	Immunogen affinity purified
Buffer	PBS (pH 7.2) and 40% Glycerol

Product Description	
Host	Rabbit
Gene ID	1066
Gene Symbol	CES1
Species	Human
Immunogen	This antibody was developed against Recombinant Protein corresponding to amino acids: VTIFGESAGGESVSVLVLSPLAKNLFHRAISESGVALTSVLVKKGDVKPLAEQIAI TAGCKTTTSAVMVHCLRQKTEEELETTLMKFLSLDLQGDPRESQPLLGTVID GMLLLKTPEELQAERNFHTVP

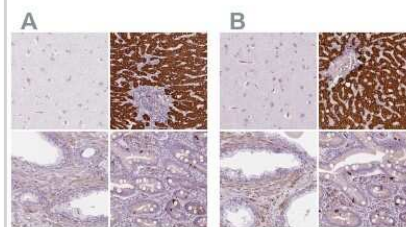
Product Application Details	
Applications	Western Blot, Simple Western, Immunohistochemistry, Immunohistochemistry-Paraffin
Recommended Dilutions	Western Blot 0.04-0.4 ug/ml, Simple Western 1:20, Immunohistochemistry 1:200 - 1:500, Immunohistochemistry-Paraffin 1:200-1:500
Application Notes	For IHC-Paraffin, HIER pH 6 retrieval is recommended. In Simple Western only 10 - 15 uL of the recommended dilution is used per data point. See Simple Western Antibody Database for Simple Western validation: Tested in RT-4, separated by Size, antibody dilution of 1:20, apparent MW was 56 kDa. Separated by Size-Wes, Sally Sue/Peggy Sue.

Images

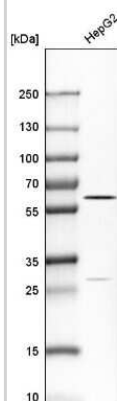
Immunohistochemistry-Paraffin: Carboxylesterase 1/CES1 Antibody [NBP1-85691] - Analysis in human liver and cerebral cortex tissues using NBP1-85691 antibody. Corresponding CES1 RNA-seq data are presented for the same tissues.



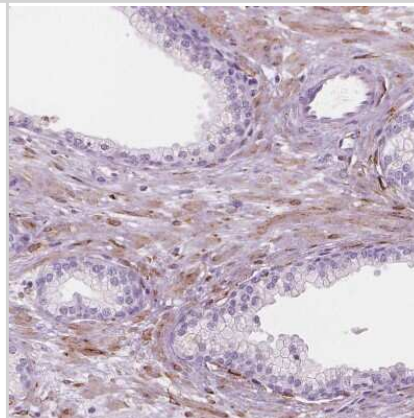
Immunohistochemistry-Paraffin: Carboxylesterase 1/CES1 Antibody [NBP1-85691] - Staining of human cerebral cortex, liver, prostate and upper gastrointestinal using Anti-CES1 antibody NBP1-85691 (A) shows similar protein distribution across tissues to independent antibody NBP2-48854 (B).



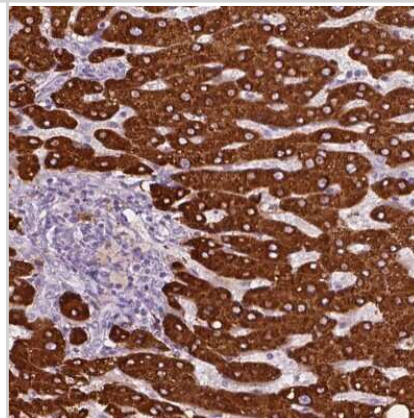
Western Blot: Carboxylesterase 1/CES1 Antibody [NBP1-85691] - Analysis in human cell line HepG2.



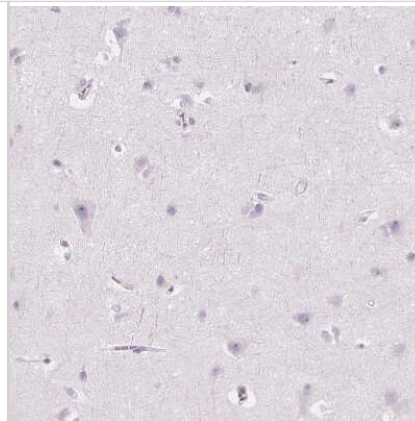
Immunohistochemistry-Paraffin: Carboxylesterase 1/CES1 Antibody [NBP1-85691] - Staining of human prostate shows moderate cytoplasmic positivity in smooth muscle cells.



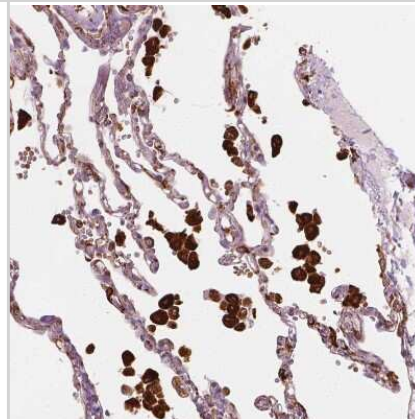
Immunohistochemistry-Paraffin: Carboxylesterase 1/CES1 Antibody [NBP1-85691] - Staining of human liver shows high expression.



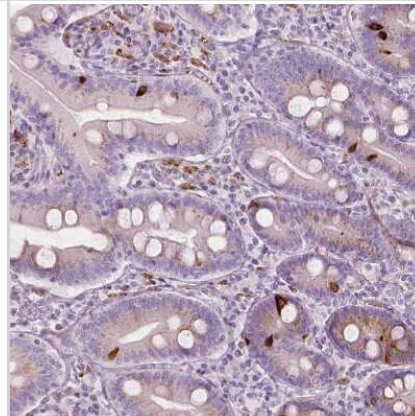
Immunohistochemistry-Paraffin: Carboxylesterase 1/CES1 Antibody [NBP1-85691] - Staining of human cerebral cortex shows no cytoplasmic positivity in neuronal cells as expected.



Immunohistochemistry-Paraffin: Carboxylesterase 1/CES1 Antibody [NBP1-85691] - Staining of human lung shows strong cytoplasmic positivity in macrophages.



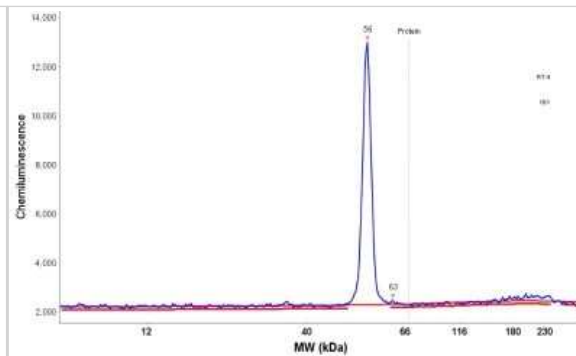
Immunohistochemistry-Paraffin: Carboxylesterase 1/CES1 Antibody [NBP1-85691] - Staining of human small intestine shows strong cytoplasmic positivity in enteroendocrine cells.



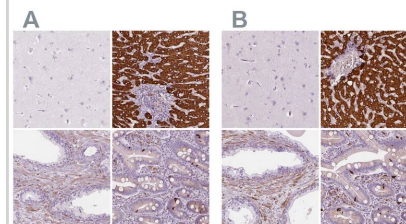
Simple Western: Carboxylesterase 1/CES1 Antibody [NBP1-85691] - Simple Western lane view shows a specific band for CES1 in 0.2 mg/ml of RT-4 lysate. This experiment was performed under reducing conditions using the 12-230 kDa separation system.



Simple Western: Carboxylesterase 1/CES1 Antibody [NBP1-85691] - Electropherogram image(s) of corresponding Simple Western lane view. CES1 antibody was used at 1:20 dilution on RT-4 lysate(s).



Staining of human cerebral cortex, liver, prostate and upper gastrointestinal using NBP1-85691 (A) shows similar protein distribution across tissues to independent antibody NBP2-48854 (B).





Novus Biologicals USA

10730 E. Briarwood Avenue
Centennial, CO 80112
USA
Phone: 303.730.1950
Toll Free: 1.888.506.6887
Fax: 303.730.1966
nb-customerservice@bio-techne.com

Bio-Techne Canada

21 Canmotor Ave
Toronto, ON M8Z 4E6
Canada
Phone: 905.827.6400
Toll Free: 855.668.8722
Fax: 905.827.6402
canada.inquires@bio-techne.com

Bio-Techne Ltd

19 Barton Lane
Abingdon Science Park
Abingdon, OX14 3NB, United Kingdom
Phone: (44) (0) 1235 529449
Free Phone: 0800 37 34 15
Fax: (44) (0) 1235 533420
info.EMEA@bio-techne.com

General Contact Information

www.novusbio.com
Technical Support: nb-technical@bio-techne.com
Orders: nb-customerservice@bio-techne.com
General: novus@novusbio.com

Error: Subreport could not be shown.

Limitations

This product is for research use only and is not approved for use in humans or in clinical diagnosis. Primary Antibodies are guaranteed for 1 year from date of receipt.

For more information on our 100% guarantee, please visit www.novusbio.com/guarantee

Earn gift cards/discounts by submitting a review: www.novusbio.com/reviews/submit/NBP1-85691

Earn gift cards/discounts by submitting a publication using this product:
www.novusbio.com/publications

