

Product Datasheet

CRISPLD2 Antibody - BSA Free

NBP1-85143

Unit Size: 0.1 ml

Store at 4C short term. Aliquot and store at -20C long term. Avoid freeze-thaw cycles.

www.novusbio.com



technical@novusbio.com

Reviews: 1 Publications: 3

Protocols, Publications, Related Products, Reviews, Research Tools and Images at:
www.novusbio.com/NBP1-85143

Updated 2/21/2025 v.20.1

Earn rewards for product reviews and publications.

Submit a publication at www.novusbio.com/publications

Submit a review at www.novusbio.com/reviews/destination/NBP1-85143



NBP1-85143

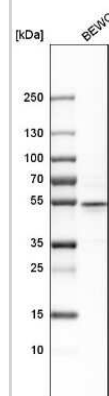
CRISPLD2 Antibody - BSA Free

Product Information	
Unit Size	0.1 ml
Concentration	Concentrations vary lot to lot. See vial label for concentration. If unlisted please contact technical services.
Storage	Store at 4C short term. Aliquot and store at -20C long term. Avoid freeze-thaw cycles.
Clonality	Polyclonal
Preservative	0.02% Sodium Azide
Isotype	IgG
Purity	Immunogen affinity purified
Buffer	PBS (pH 7.2) and 40% Glycerol
Product Description	
Host	Rabbit
Gene ID	83716
Gene Symbol	CRISPLD2
Species	Human, Mouse
Reactivity Notes	Mouse reactivity reported in scientific literature (PMID: 31746554). Rat (83%).
Immunogen	This antibody was developed against Recombinant Protein corresponding to amino acids: VCNYSKPGNWIWGEAPYKNGRPCSECPPSYGGSCRNNLCYREETYTPKPETDE MNEVETAPIPEENHVWLQPRVMRPTKPKKTSVAVNYMTQVVRCDTKMKDRCKG STCNRYQCPAGCLNHKAKIFGSLFYESSS
Product Application Details	
Applications	Western Blot, Immunohistochemistry, Immunohistochemistry-Paraffin
Recommended Dilutions	Western Blot 0.04-0.4 ug/ml, Immunohistochemistry 1:200 - 1:500, Immunohistochemistry-Paraffin 1:200 - 1:500
Application Notes	For IHC-Paraffin, HIER pH 6 retrieval is recommended.

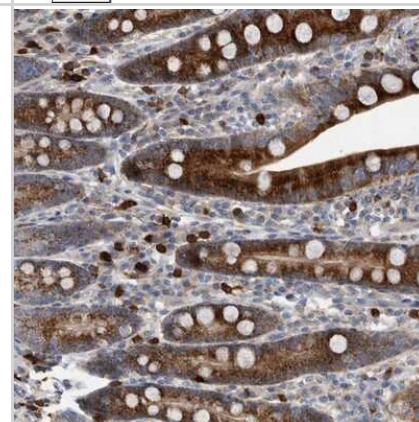


Images

Western Blot: CRISPLD2 Antibody [NBP1-85143] - Analysis in human cell line BEWO.



Immunohistochemistry-Paraffin: CRISPLD2 Antibody [NBP1-85143] - Staining of human duodenum shows strong granular positivity in glandular cells.



Publications

Jackson RM, Griesel BA, Short KR et al. Weight Loss Results in Increased Expression of Anti-Inflammatory Protein CRISPLD2 in Mouse Adipose Tissue Obesity (Silver Spring) 2019-12-01 [PMID: 31746554] (WB, Mouse)

Yoo JY, Shin H, Kim TH et al. CRISPLD2 Is a Target of Progesterone Receptor and Its Expression Is Decreased in Women with Endometriosis. PLoS One 2014-01-01 [PMID: 24955763] (WB, IF/IHC, Human)

Stadler C, Rexhepaj E, Singan VR et al. Immunofluorescence and fluorescent-protein tagging show high correlation for protein localization in mammalian cells. Nat Methods 2013-04-01 [PMID: 23435261]



Novus Biologicals USA

10730 E. Briarwood Avenue
Centennial, CO 80112
USA
Phone: 303.730.1950
Toll Free: 1.888.506.6887
Fax: 303.730.1966
nb-customerservice@bio-techne.com

Bio-Techne Canada

21 Canmotor Ave
Toronto, ON M8Z 4E6
Canada
Phone: 905.827.6400
Toll Free: 855.668.8722
Fax: 905.827.6402
canada.inquires@bio-techne.com

Bio-Techne Ltd

19 Barton Lane
Abingdon Science Park
Abingdon, OX14 3NB, United Kingdom
Phone: (44) (0) 1235 529449
Free Phone: 0800 37 34 15
Fax: (44) (0) 1235 533420
info.EMEA@bio-techne.com

General Contact Information

www.novusbio.com
Technical Support: nb-technical@bio-techne.com
Orders: nb-customerservice@bio-techne.com
General: novus@novusbio.com

Products Related to NBP1-85143

NBP1-85143PEP	CRISPLD2 Recombinant Protein Antigen
HAF008	Goat anti-Rabbit IgG Secondary Antibody [HRP]
NB7160	Goat anti-Rabbit IgG (H+L) Secondary Antibody [HRP]
NBP2-24891	Rabbit IgG Isotype Control

Limitations

This product is for research use only and is not approved for use in humans or in clinical diagnosis. Primary Antibodies are guaranteed for 1 year from date of receipt.

For more information on our 100% guarantee, please visit www.novusbio.com/guarantee

Earn gift cards/discounts by submitting a review: www.novusbio.com/reviews/submit/NBP1-85143

Earn gift cards/discounts by submitting a publication using this product:
www.novusbio.com/publications

