

Product Datasheet

CLPTM1L Antibody - BSA Free

NBP1-84378

Unit Size: 0.1 ml

Store at 4C short term. Aliquot and store at -20C long term. Avoid freeze-thaw cycles.

www.novusbio.com



technical@novusbio.com

Publications: 3

Protocols, Publications, Related Products, Reviews, Research Tools and Images at:
www.novusbio.com/NBP1-84378

Updated 2/21/2025 v.20.1

Earn rewards for product
reviews and publications.

Submit a publication at www.novusbio.com/publications

Submit a review at www.novusbio.com/reviews/destination/NBP1-84378



NBP1-84378

CLPTM1L Antibody - BSA Free

Product Information

Unit Size	0.1 ml
Concentration	Concentrations vary lot to lot. See vial label for concentration. If unlisted please contact technical services.
Storage	Store at 4C short term. Aliquot and store at -20C long term. Avoid freeze-thaw cycles.
Clonality	Polyclonal
Preservative	0.02% Sodium Azide
Isotype	IgG
Purity	Immunogen affinity purified
Buffer	PBS (pH 7.2) and 40% Glycerol

Product Description

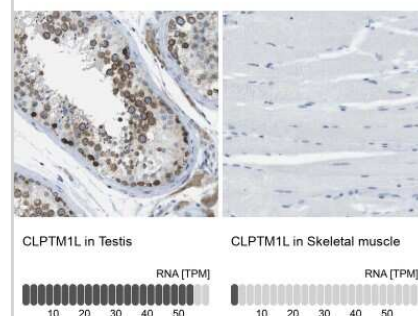
Host	Rabbit
Gene ID	81037
Gene Symbol	CLPTM1L
Species	Human
Reactivity Notes	Human reactivity reported in scientific literature (PMID: 24648346).
Immunogen	This antibody was developed against Recombinant Protein corresponding to amino acids: LNVEDFDVESKFERTVNVSVPKKTRNNGTLYAYIFLHHAGVLPWHDGKQVHLV SPLTTYMVPKPEEINLLTGESDTQQIEAEKKPTSALDEPVSHWRPRLALNVMAD NFVFDGSSLPADVHRYMKMIQLGKTVHYL

Product Application Details

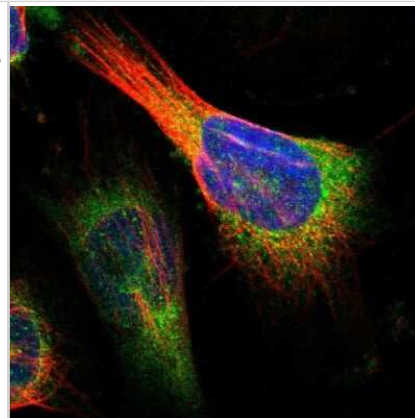
Applications	Immunocytochemistry/ Immunofluorescence, Immunohistochemistry, Immunohistochemistry-Paraffin
Recommended Dilutions	Immunohistochemistry 1:500 - 1:1000, Immunocytochemistry/ Immunofluorescence 0.25-2 ug/ml, Immunohistochemistry-Paraffin 1:500-1:1000
Application Notes	IHC, ICC/IF reported in scientific literature (PMID: 24648346). For IHC-Paraffin, HIER pH 6 retrieval is recommended. ICC/IF, Fixation Permeabilization: Use PFA/Triton X-100.

Images

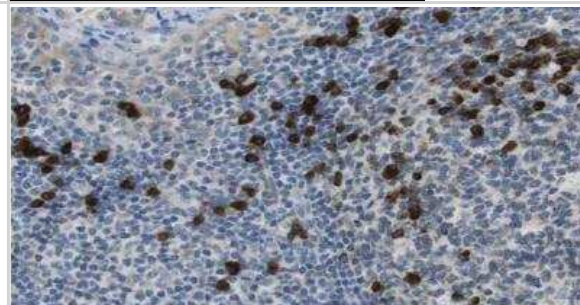
Immunohistochemistry-Paraffin: CLPTM1L Antibody [NBP1-84378] - Analysis in human testis and skeletal muscle tissues. Corresponding CLPTM1L RNA-seq data are presented for the same tissues.



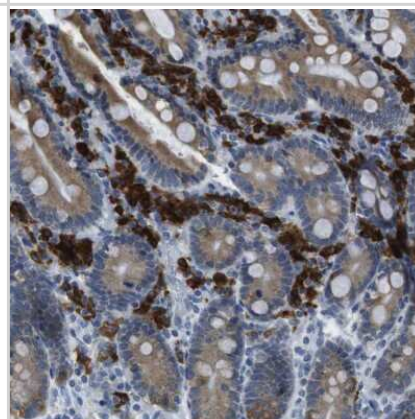
Immunocytochemistry/Immunofluorescence: CLPTM1L Antibody [NBP1-84378] - Immunofluorescent staining of human cell line U-251 MG shows localization to endoplasmic reticulum. Antibody staining is shown in green.



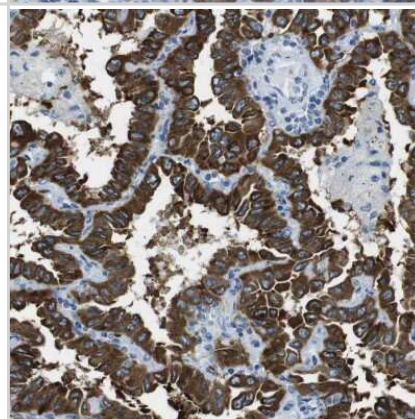
Immunohistochemistry-Paraffin: CLPTM1L Antibody [NBP1-84378] - Staining of human tonsil shows strong cytoplasmic positivity in non-germinal center cells.



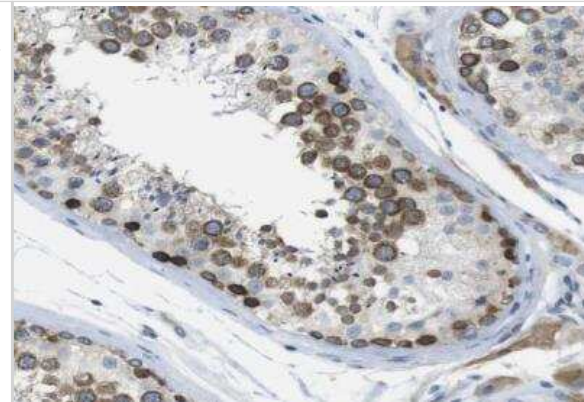
Immunohistochemistry-Paraffin: CLPTM1L Antibody [NBP1-84378] - Staining of human duodenum shows strong cytoplasmic positivity in lymphoid cells.



Immunohistochemistry-Paraffin: CLPTM1L Antibody [NBP1-84378] - Staining of human lung cancer, adenocarcinoma shows strong positivity.



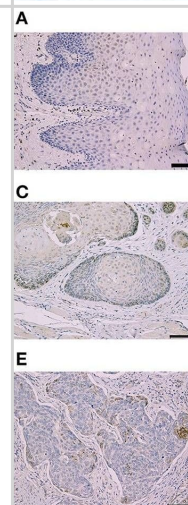
Immunohistochemistry-Paraffin: CLPTM1L Antibody [NBP1-84378] - Staining of human testis shows moderate to strong cytoplasmic positivity in cells in seminiferous ducts.



Immunohistochemistry-Paraffin: CLPTM1L Antibody [NBP1-84378] - Staining of human skeletal muscle shows no positivity in myocytes as expected.



Immunohistochemistry: CLPTM1L Antibody [NBP1-84378] - Representative Immunohistochemical staining according to Cleft Lip & Palate Transmembrane 1-Like (Clptm1L) & TMEM207 immunoreactivity at the invasion front of oral squamous cell carcinoma (OSCC). Weak Clptm1L or TMEM207 immunoreactivity was found in non-tumorous oral epithelial cells (A,B), respectively. In contrast, Clptm1L or TMEM207 immunoreactivity was found in many invasive OSCC cells. Representative positive Clptm1L immunoreactivity in tissue specimens from patients with favorable & poor prognosis is shown in (C,D), respectively. TMEM207 immunoreactivity in tissue specimens from patients with favorable & poor prognosis is shown in (E,F), respectively. Note the robust Clptm1L & TMEM207 immunoreactivity in (D,F). Image collected & cropped by CiteAb from the following publication (<https://pubmed.ncbi.nlm.nih.gov/35047994>), licensed under a CC-BY license. Not internally tested by Novus Biologicals.



Publications

Hano K, Hatano K, Saigo C et al. Combination of Clptm1L and TMEM207 Expression as a Robust Prognostic Marker in Oral Squamous Cell Carcinoma *Frontiers in Oral Health* 2021-03-29 [PMID: 35047994] (Immunohistochemistry)

Inoue K, Hatano K, Hanamatsu Y et al. Pathobiological role of cleft palate transmembrane protein 1 family proteins in oral squamous cell carcinoma. *J. Cancer Res. Clin. Oncol.* 2019-01-11 [PMID: 30635792] (IF/IHC, Human)

Jia J, Bosley AD, Thompson A et al. CLPTM1L promotes growth and enhances aneuploidy in pancreatic cancer cells. *Cancer Res* 2014-05-15 [PMID: 24648346] (ICC/IF, IF/IHC, Human)



Novus Biologicals USA

10730 E. Briarwood Avenue
Centennial, CO 80112
USA
Phone: 303.730.1950
Toll Free: 1.888.506.6887
Fax: 303.730.1966
nb-customerservice@bio-techne.com

Bio-Techne Canada

21 Canmotor Ave
Toronto, ON M8Z 4E6
Canada
Phone: 905.827.6400
Toll Free: 855.668.8722
Fax: 905.827.6402
canada.inquires@bio-techne.com

Bio-Techne Ltd

19 Barton Lane
Abingdon Science Park
Abingdon, OX14 3NB, United Kingdom
Phone: (44) (0) 1235 529449
Free Phone: 0800 37 34 15
Fax: (44) (0) 1235 533420
info.EMEA@bio-techne.com

General Contact Information

www.novusbio.com
Technical Support: nb-technical@bio-techne.com
Orders: nb-customerservice@bio-techne.com
General: novus@novusbio.com

Products Related to NBP1-84378

NBP1-84378PEP	CLPTM1L Recombinant Protein Antigen
HAF008	Goat anti-Rabbit IgG Secondary Antibody [HRP]
NB7160	Goat anti-Rabbit IgG (H+L) Secondary Antibody [HRP]
NBP2-24891	Rabbit IgG Isotype Control

Limitations

This product is for research use only and is not approved for use in humans or in clinical diagnosis. Primary Antibodies are guaranteed for 1 year from date of receipt.

For more information on our 100% guarantee, please visit www.novusbio.com/guarantee

Earn gift cards/discounts by submitting a review: www.novusbio.com/reviews/submit/NBP1-84378

Earn gift cards/discounts by submitting a publication using this product:
www.novusbio.com/publications

