

Product Datasheet

PLVAP Antibody - BSA Free NBP1-83911

Unit Size: 0.1 ml

Store at 4C short term. Aliquot and store at -20C long term. Avoid freeze-thaw cycles.

www.novusbio.com



technical@novusbio.com

Reviews: 3 Publications: 6

Protocols, Publications, Related Products, Reviews, Research Tools and Images at:
www.novusbio.com/NBP1-83911

Updated 2/21/2025 v.20.1

**Earn rewards for product
reviews and publications.**

Submit a publication at www.novusbio.com/publications

Submit a review at www.novusbio.com/reviews/destination/NBP1-83911



NBP1-83911

PLVAP Antibody - BSA Free

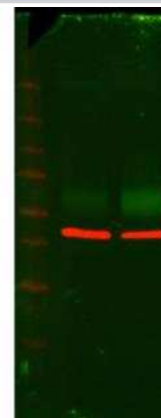
Product Information	
Unit Size	0.1 ml
Concentration	Concentrations vary lot to lot. See vial label for concentration. If unlisted please contact technical services.
Storage	Store at 4C short term. Aliquot and store at -20C long term. Avoid freeze-thaw cycles.
Clonality	Polyclonal
Preservative	0.02% Sodium Azide
Isotype	IgG
Purity	Immunogen affinity purified
Buffer	PBS (pH 7.2) and 40% Glycerol

Product Description	
Host	Rabbit
Gene ID	83483
Gene Symbol	PLVAP
Species	Human
Immunogen	This antibody was developed against Recombinant Protein corresponding to amino acids: KEQLQKVQALCLPLDKDKFEMDLRNLWRDSIIPRSLDNLGYNLYHPLGSELASI RRACDHMPSLMSSKVEELARSLRADIERVARENSDLQRQKLEAQQGLRASQE AKQKVEKEAQAREAKLQAECRS

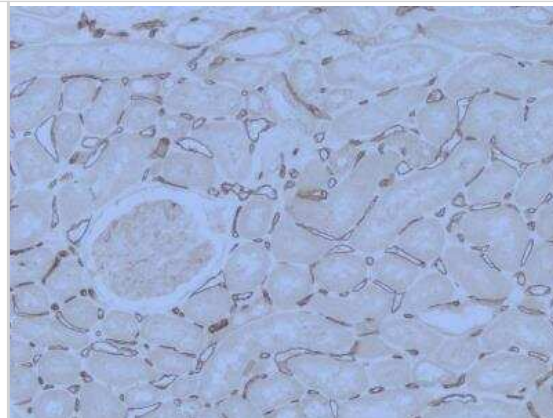
Product Application Details	
Applications	Western Blot, Electron Microscopy, Immunohistochemistry, Immunohistochemistry-Paraffin
Recommended Dilutions	Western Blot Validated by verified customer review., Immunohistochemistry 1:500 - 1:1000, Immunohistochemistry-Paraffin 1:500 - 1:1000, Electron Microscopy Reported in scientific literature (PMID:34280928).
Application Notes	For IHC-Paraffin, HIER pH 6 retrieval is recommended.

Images

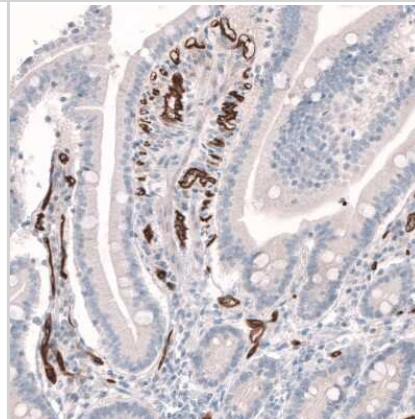
Western Blot: PLVAP Antibody [NBP1-83911] - Cell lysate from Human Retinal Microvascular Endothelial Cells (HRMECs). PLVAP antibody at a dilution of (1:1000) and overnight incubation at 4C. Left = untreated cells and Right = 24hr VEGFA treatment. Green band = PLVAP and Red band = Actin. Ladder is Odyssey 928-40000 molecular weight marker. Image submitted by a verified customer review.



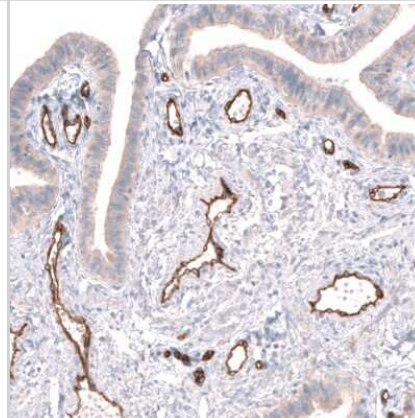
Immunohistochemistry-Paraffin: PLVAP Antibody [NBP1-83911] - Human kidney. Heat mediated antigen retrieval in citrate buffer (pH 6) at 95C for 20 minutes. Image submitted by a verified customer review.



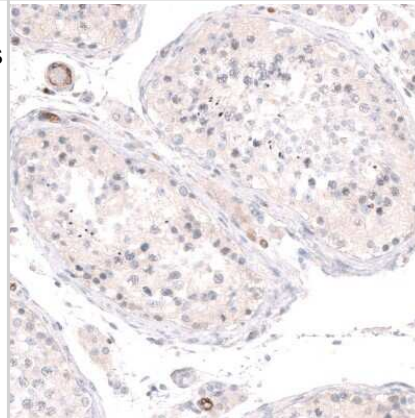
Immunohistochemistry-Paraffin: PLVAP Antibody [NBP1-83911] - Staining of human duodenum shows strong membranous positivity in endothelial cells.



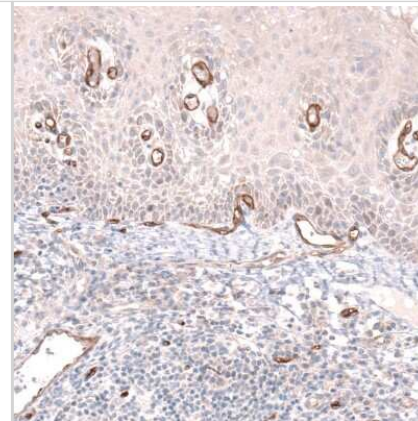
Immunohistochemistry-Paraffin: PLVAP Antibody [NBP1-83911] - Staining of human fallopian tube shows strong membranous positivity in endothelial cells.



Immunohistochemistry-Paraffin: PLVAP Antibody [NBP1-83911] - Staining of human testis shows no positivity in cells in seminiferous ducts as expected.



Immunohistochemistry-Paraffin: PLVAP Antibody [NBP1-83911] - Staining of human tonsil shows strong membranous positivity in endothelial cells.



Publications

Shuhan W, Jinxiao L, Luorui S, Liuying C et al. Dachengqi decoction ameliorated liver injury in liver fibrosis mice by maintaining gut vascular barrier integrity *Phytomedicine* 2024-11-22 [PMID: 39577253]

Wilkinson A, Hulme S, Kennedy J et al. The senescent secretome drives PLVAP expression in cultured human hepatic endothelial cells to promote monocyte transmigration *iScience* 2023-09-01 [PMID: 37810232]

Anri S, Kunio K, Yuto I et al. Overexpression of Plasmalemmal Vesicle-Associated Protein-1 Reflects Glomerular Endothelial Injury in Cases of Proliferative Glomerulonephritis with Monoclonal IgG Deposits *Kidney Int Rep.* 2022-10-19 [PMID: 36644361] (Immunohistochemistry-Paraffin, Human)

Yokomori H, Ando W, Oda M Plasmalemmal Vesicle-Associated Protein Is Associated with Endothelial Cells Sprouting from the Peribiliary Capillary Plexus in Human Cirrhotic Liver *Journal of vascular research* 2021-07-19 [PMID: 34280928] (IHC-P, EM, WB)

Xie Y, He L, Lugano R Et Al. Key molecular alterations in endothelial cells in human glioblastoma uncovered through single-cell RNA sequencing *JCI insight* 2021-07-06 [PMID: 34228647] (IHC-P)

Baba T, Grebe R, Hasegawa T et al. Maturation of the fetal human choriocapillaris. *Invest Ophthalmol Vis Sci* 2009-07-01 [PMID: 19264887]



Novus Biologicals USA

10730 E. Briarwood Avenue
Centennial, CO 80112
USA
Phone: 303.730.1950
Toll Free: 1.888.506.6887
Fax: 303.730.1966
nb-customerservice@bio-techne.com

Bio-Techne Canada

21 Canmotor Ave
Toronto, ON M8Z 4E6
Canada
Phone: 905.827.6400
Toll Free: 855.668.8722
Fax: 905.827.6402
canada.inquires@bio-techne.com

Bio-Techne Ltd

19 Barton Lane
Abingdon Science Park
Abingdon, OX14 3NB, United Kingdom
Phone: (44) (0) 1235 529449
Free Phone: 0800 37 34 15
Fax: (44) (0) 1235 533420
info.EMEA@bio-techne.com

General Contact Information

www.novusbio.com
Technical Support: nb-technical@bio-techne.com
Orders: nb-customerservice@bio-techne.com
General: novus@novusbio.com

Products Related to NBP1-83911

NBP1-83911PEP	PLVAP Recombinant Protein Antigen
HAF008	Goat anti-Rabbit IgG Secondary Antibody [HRP]
NB7160	Goat anti-Rabbit IgG (H+L) Secondary Antibody [HRP]
NBP2-24891	Rabbit IgG Isotype Control

Limitations

This product is for research use only and is not approved for use in humans or in clinical diagnosis. Primary Antibodies are guaranteed for 1 year from date of receipt.

For more information on our 100% guarantee, please visit www.novusbio.com/guarantee

Earn gift cards/discounts by submitting a review: www.novusbio.com/reviews/submit/NBP1-83911

Earn gift cards/discounts by submitting a publication using this product:
www.novusbio.com/publications

