

Product Datasheet

CHCHD3 Antibody - BSA Free

NBP1-83656

Unit Size: 0.1 ml

Store at 4C short term. Aliquot and store at -20C long term. Avoid freeze-thaw cycles.

www.novusbio.com



technical@novusbio.com

Reviews: 1 Publications: 2

Protocols, Publications, Related Products, Reviews, Research Tools and Images at:
www.novusbio.com/NBP1-83656

Updated 12/2/2025 v.20.1

Earn rewards for product reviews and publications.

Submit a publication at www.novusbio.com/publications

Submit a review at www.novusbio.com/reviews/destination/NBP1-83656



NBP1-83656

CHCHD3 Antibody - BSA Free

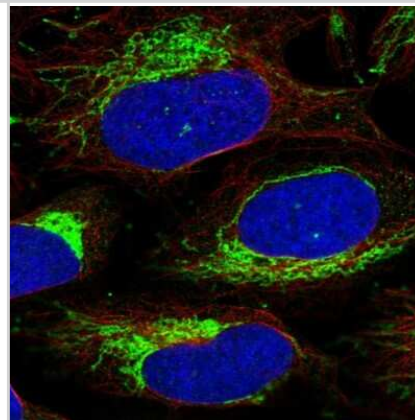
Product Information	
Unit Size	0.1 ml
Concentration	Concentrations vary lot to lot. See vial label for concentration. If unlisted please contact technical services.
Storage	Store at 4C short term. Aliquot and store at -20C long term. Avoid freeze-thaw cycles.
Clonality	Polyclonal
Preservative	0.02% Sodium Azide
Isotype	IgG
Purity	Affinity purified
Buffer	PBS (pH 7.2) and 40% Glycerol

Product Description	
Description	Novus Biologicals Rabbit CHCHD3 Antibody - BSA Free (NBP1-83656) is a polyclonal antibody validated for use in IHC, WB and ICC/IF. Anti-CHCHD3 Antibody: Cited in 2 publications. All Novus Biologicals antibodies are covered by our 100% guarantee.
Host	Rabbit
Gene ID	54927
Gene Symbol	CHCHD3
Species	Human, Mouse, Rat
Immunogen	This antibody was developed against Recombinant Protein corresponding to amino acids: DENENITV/VKGIRLSENVIDRMKESSPSGSKSQRYSGAYGASVSDEELKRRVA EELALEQAKKESEDQKRLKQAK

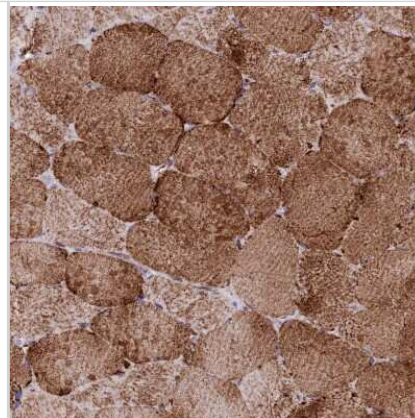
Product Application Details	
Applications	Western Blot, Immunohistochemistry-Paraffin, Immunocytochemistry/Immunofluorescence, Immunohistochemistry, Knockdown Validated
Recommended Dilutions	Western Blot 0.04-0.4 ug/ml, Immunohistochemistry 1:500 - 1:1000, Immunocytochemistry/ Immunofluorescence 0.25-2 ug/ml, Immunohistochemistry-Paraffin 1:500 - 1:1000, Knockdown Validated
Application Notes	For IHC-Paraffin, HIER pH 6 retrieval is recommended. ICC/IF Fixation Permeabilization, Use PFA/Triton X-100.

Images

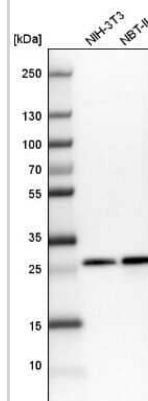
Immunocytochemistry/Immunofluorescence: CHCHD3 Antibody [NBP1-83656] - Staining of human cell line U-2 OS shows localization to mitochondria. Antibody staining is shown in green.



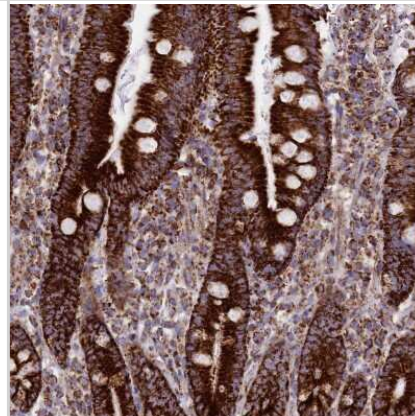
Immunohistochemistry-Paraffin: CHCHD3 Antibody [NBP1-83656] - Staining of human skeletal muscle shows strong granular cytoplasmic positivity in myocytes.



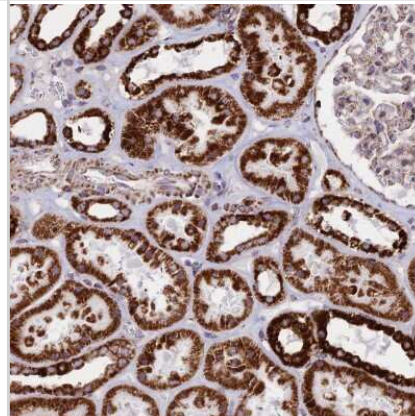
Western Blot: CHCHD3 Antibody [NBP1-83656] - Analysis in mouse cell line NIH-3T3 and rat cell line NBT-II.



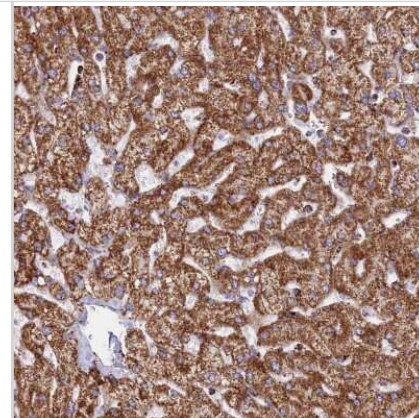
Immunohistochemistry-Paraffin: CHCHD3 Antibody [NBP1-83656] - Staining of human duodenum shows strong granular cytoplasmic positivity in glandular cells.



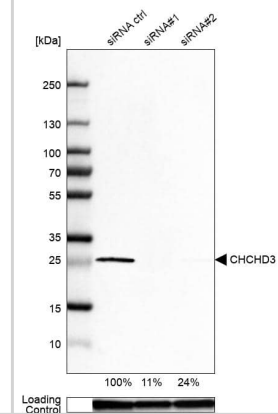
Immunohistochemistry-Paraffin: CHCHD3 Antibody [NBP1-83656] - Staining of human kidney shows strong granular cytoplasmic positivity in cells in tubules.



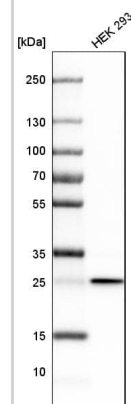
Immunohistochemistry-Paraffin: CHCHD3 Antibody [NBP1-83656] - Staining of human liver shows moderate granular cytoplasmic positivity in hepatocytes.



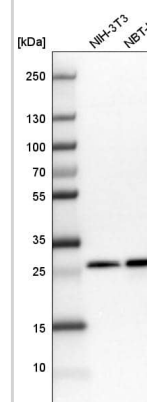
Analysis in U-87MG ATCC cells) transfected with control siRNA, target specific siRNA probe #1 and #2, using Anti-CHCHD3 antibody. Remaining relative intensity is presented. Loading control: Anti-GAPDH.



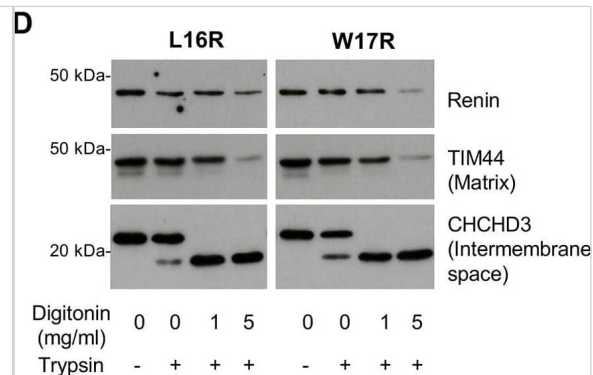
Analysis in human cell line HEK 293.



Analysis in mouse cell line NIH-3T3 and rat cell line NBT-II.



Mitochondrial targeting of mutant renin isoforms. (A) Western blot analysis showing renin expression in the lysates and conditioned media of transiently transfected Calu-6 cells. GAPDH is shown as a loading control. The presence of a non-glycosylated renin isoform (red asterisk) can be seen for all mutants. (B) Cell lysates were deglycosylated with PNGase F. The lower band indicated in panel A with the asterisk is not sensitive to PNGase F treatment, indicating the absence of N-glycans. (C) Immunofluorescence analysis in Calu-6 cells showing merged pictures of renin (red) and TIM44 (marker of mitochondria, green) with nuclei (DAPI, blue). Scale bar: 20 μ m. Colocalisation of renin and mitochondria can be assessed by the presence of merged yellow signal. The graph below shows Pearson's correlation coefficient between signals of TIM44 and renin. * $P < 0.05$; ** $P < 0.01$; *** $P < 0.001$; **** $P < 0.0001$; two-way ANOVA with Bonferroni post hoc test versus WT. Data are shown as mean \pm s.e.m. (n=3 independent experiments). (D) Protease protection assay performed on isolated mitochondria from HEK293 cells expressing p.L16R or p.W17R mutant isoforms. Western blot experiments showed digestion of renin isoforms by trypsin only when the inner membrane was permeabilised. This result suggests that mutant isoforms are imported within the mitochondrial matrix. Images are representative of three independent experiments. Image collected and cropped by CiteAb from the following open publication (<https://pubmed.ncbi.nlm.nih.gov/37283036>), licensed under a CC-BY license. Not internally tested by Novus Biologicals.



Publications

Céline Schaeffer, Maurizio De Fusco, Elena Pasqualetto, Caterina Scolari, Claudia Izzi, Francesco Scolari, Luca Rampoldi Misrouting to mitochondria of renin carrying dominant mutations in the leader peptide or pro-segment. *Disease models & mechanisms* 2023-05-09 [PMID: 37158097] (Western Blot, Human)

Schaeffer C, De Fusco M, Pasqualetto E et al. Leader peptide or pro-segment mutants of renin are misrouted to mitochondria in autosomal dominant tubulointerstitial kidney disease *Disease models & mechanisms* 2023-06-01 [PMID: 37283036] (WB, Human)



Novus Biologicals USA

10730 E. Briarwood Avenue
Centennial, CO 80112
USA
Phone: 303.730.1950
Toll Free: 1.888.506.6887
Fax: 303.730.1966
nb-customerservice@bio-techne.com

Bio-Techne Canada

21 Canmotor Ave
Toronto, ON M8Z 4E6
Canada
Phone: 905.827.6400
Toll Free: 855.668.8722
Fax: 905.827.6402
canada.inquires@bio-techne.com

Bio-Techne Ltd

19 Barton Lane
Abingdon Science Park
Abingdon, OX14 3NB, United Kingdom
Phone: (44) (0) 1235 529449
Free Phone: 0800 37 34 15
Fax: (44) (0) 1235 533420
info.EMEA@bio-techne.com

General Contact Information

www.novusbio.com
Technical Support: nb-technical@bio-techne.com
Orders: nb-customerservice@bio-techne.com
General: novus@novusbio.com

Products Related to NBP1-83656

NBP1-83656PEP	CHCHD3 Recombinant Protein Antigen
NBP2-33376H	Blue Marker Antibody (6F4-F6) [HRP]
HAF008	Goat anti-Rabbit IgG Secondary Antibody [HRP]
NB7160	Goat anti-Rabbit IgG (H+L) Secondary Antibody [HRP]
NBP2-24891	Rabbit IgG Isotype Control

Limitations

This product is for research use only and is not approved for use in humans or in clinical diagnosis. Primary Antibodies are guaranteed for 1 year from date of receipt.

For more information on our 100% guarantee, please visit www.novusbio.com/guarantee

Earn gift cards/discounts by submitting a review: www.novusbio.com/reviews/submit/NBP1-83656

Earn gift cards/discounts by submitting a publication using this product:
www.novusbio.com/publications

