

Product Datasheet

Sigma-1 R/OPRS1 Antibody - BSA Free NBP1-82479

Unit Size: 0.1 ml

Store at 4C short term. Aliquot and store at -20C long term. Avoid freeze-thaw cycles.

www.novusbio.com



technical@novusbio.com

Publications: 4

Protocols, Publications, Related Products, Reviews, Research Tools and Images at:
www.novusbio.com/NBP1-82479

Updated 9/9/2025 v.20.1

Earn rewards for product
reviews and publications.

Submit a publication at www.novusbio.com/publications

Submit a review at www.novusbio.com/reviews/destination/NBP1-82479



NBP1-82479

Sigma-1 R/OPRS1 Antibody - BSA Free

Product Information	
Unit Size	0.1 ml
Concentration	Concentrations vary lot to lot. See vial label for concentration. If unlisted please contact technical services.
Storage	Store at 4C short term. Aliquot and store at -20C long term. Avoid freeze-thaw cycles.
Clonality	Polyclonal
Preservative	0.02% Sodium Azide
Isotype	IgG
Purity	Immunogen affinity purified
Buffer	PBS (pH 7.2) and 40% Glycerol

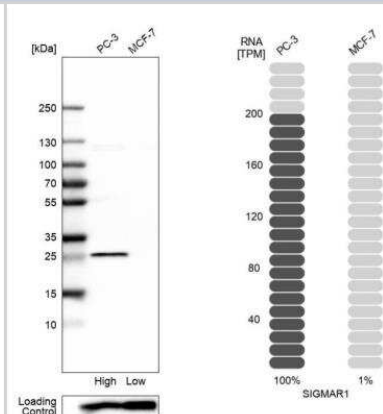
Product Description	
Description	Novus Biologicals Rabbit Sigma-1 R/OPRS1 Antibody - BSA Free (NBP1-82479) is a polyclonal antibody validated for use in IHC, WB and Simple Western. Anti-Sigma-1 R/OPRS1 Antibody: Cited in 4 publications. All Novus Biologicals antibodies are covered by our 100% guarantee.
Host	Rabbit
Gene ID	10280
Gene Symbol	SIGMAR1
Species	Human, Rat
Reactivity Notes	Use in Rat reported in scientific literature (PMID:35040378).
Immunogen	This antibody was developed against Recombinant Protein corresponding to amino acids: FVFQREEIAQLARQYAGLDHELAFSRLIVELRRLHPGHVLPDEELQWVFNAG G

Product Application Details	
Applications	Western Blot, Simple Western, Immunohistochemistry-Paraffin, Immunohistochemistry
Recommended Dilutions	Western Blot 0.04-0.4 ug/ml, Simple Western 1:20, Immunohistochemistry 1:20 - 1:50, Immunohistochemistry-Paraffin 1:20 - 1:50
Application Notes	For IHC-Paraffin, HIER pH 6 retrieval is recommended. In Simple Western only 10 - 15 uL of the recommended dilution is used per data point. See Simple Western Antibody Database for Simple Western validation: Tested in Liver, RT-4, separated by Size, antibody dilution of 1:20, apparent MW was 29 kDa. Separated by Size-Wes, Sally Sue/Peggy Sue.

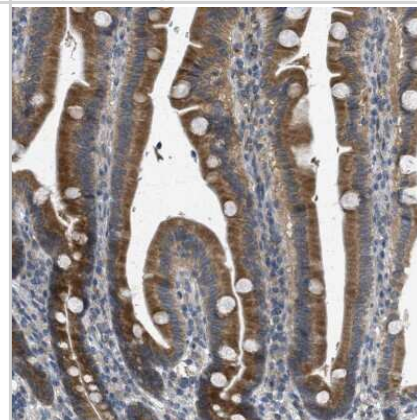


Images

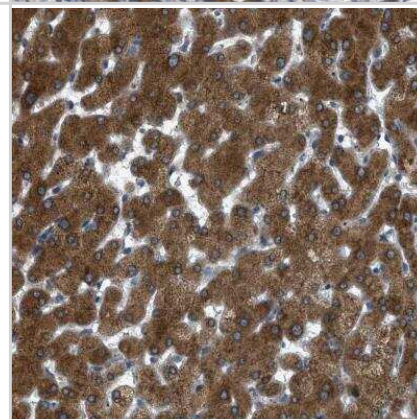
Western Blot: Sigma-1 R/OPRS1 Antibody [NBP1-82479] - Analysis in human cell lines PC-3 and MCF-7 using Anti-SIGMAR1 antibody. Corresponding SIGMAR1 RNA-seq data are presented for the same cell lines. Loading control: Anti-PPIB.



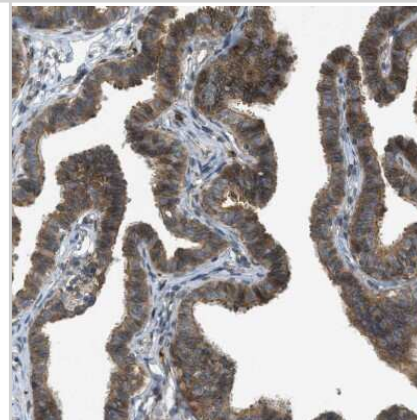
Immunohistochemistry-Paraffin: Sigma-1 R/OPRS1 Antibody [NBP1-82479] - Staining of human gastrointestinal shows moderate cytoplasmic and membranous positivity in glandular cells.



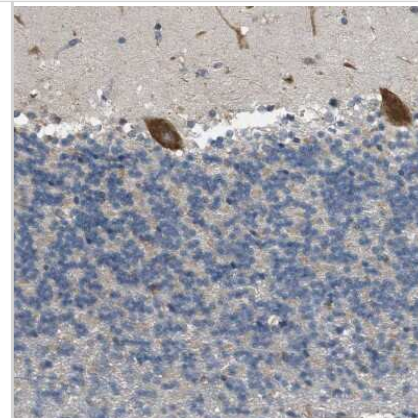
Immunohistochemistry-Paraffin: Sigma-1 R/OPRS1 Antibody [NBP1-82479] - Staining of human liver shows strong cytoplasmic positivity in hepatocytes.



Immunohistochemistry-Paraffin: Sigma-1 R/OPRS1 Antibody [NBP1-82479] - Staining of human Fallopian tube shows moderate cytoplasmic and membranous positivity in glandular cells.



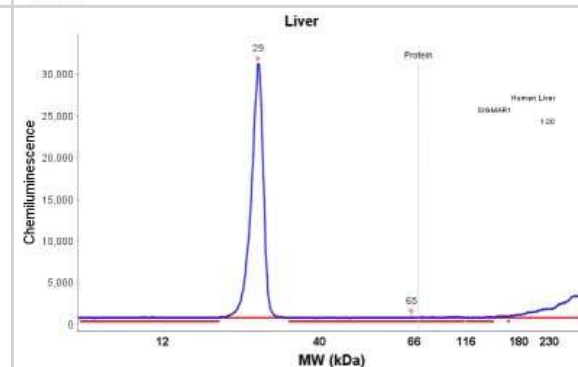
Immunohistochemistry-Paraffin: Sigma-1 R/OPRS1 Antibody [NBP1-82479] - Staining of human cerebellum shows strong cytoplasmic positivity in Purkinje cells.



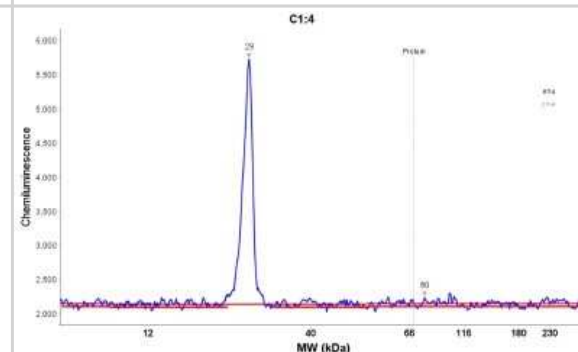
Simple Western: Sigma-1 R/OPRS1 Antibody [NBP1-82479] - Simple Western lane view shows a specific band for SIGMAR1 in 0.2 mg/ml of Liver (left), RT-4 (right) lysate. This experiment was performed under reducing conditions using the 12-230 kDa separation system.



Simple Western: Sigma-1 R/OPRS1 Antibody [NBP1-82479] - Electropherogram image(s) of corresponding Simple Western lane view. Sigma-1 R/OPRS1 antibody was used at 1:20 dilution on Liver lysate(s).



Simple Western: Sigma-1 R/OPRS1 Antibody [NBP1-82479] - Electropherogram image(s) of corresponding Simple Western lane view. Sigma-1 R/OPRS1 antibody was used at 1:20 dilution on RT-4 lysate(s).



Publications

Hornung RS, Raut NG, Cantu DJ et al. Sigma-1 receptors and progesterone metabolizing enzymes in nociceptive sensory neurons of the female rat trigeminal ganglia: A neural substrate for the antinociceptive actions of progesterone *Molecular pain* 2022-01-18 [PMID: 35040378] (WB, Rat)

Ortlz-Renterla M, Juarez-Contreras R, Gonzalez-Ramirez R et al. TRPV1 channels and the progesterone receptor Sig-1R interact to regulate pain *Proc Natl Acad Sci U S A*. 2018-02-12 [PMID: 29378958] (WB, Human)

Sun B, Kawahara M, Nagamune T. Modeling tandem AAG8-MEK inhibition in melanoma cells. *Cancer Med* 2014-06-01 [PMID: 24634165] (WB)

Chiabrando D, Marro S, Mercurio S et al. The mitochondrial heme exporter FLVCR1b mediates erythroid differentiation. *J Clin Invest* 2012-12-01 [PMID: 23187127]





Novus Biologicals USA

10730 E. Briarwood Avenue
Centennial, CO 80112
USA
Phone: 303.730.1950
Toll Free: 1.888.506.6887
Fax: 303.730.1966
nb-customerservice@bio-techne.com

Bio-Techne Canada

21 Canmotor Ave
Toronto, ON M8Z 4E6
Canada
Phone: 905.827.6400
Toll Free: 855.668.8722
Fax: 905.827.6402
canada.inquires@bio-techne.com

Bio-Techne Ltd

19 Barton Lane
Abingdon Science Park
Abingdon, OX14 3NB, United Kingdom
Phone: (44) (0) 1235 529449
Free Phone: 0800 37 34 15
Fax: (44) (0) 1235 533420
info.EMEA@bio-techne.com

General Contact Information

www.novusbio.com
Technical Support: nb-technical@bio-techne.com
Orders: nb-customerservice@bio-techne.com
General: novus@novusbio.com

Products Related to NBP1-82479

NBP1-82479PEP	Sigma-1 R/OPRS1 Recombinant Protein Antigen
HAF008	Goat anti-Rabbit IgG Secondary Antibody [HRP]
NB7160	Goat anti-Rabbit IgG (H+L) Secondary Antibody [HRP]
NBP2-24891	Rabbit IgG Isotype Control

Limitations

This product is for research use only and is not approved for use in humans or in clinical diagnosis. Primary Antibodies are guaranteed for 1 year from date of receipt.

For more information on our 100% guarantee, please visit www.novusbio.com/guarantee

Earn gift cards/discounts by submitting a review: www.novusbio.com/reviews/submit/NBP1-82479

Earn gift cards/discounts by submitting a publication using this product:
www.novusbio.com/publications

