

Product Datasheet

CRB3 Antibody NBP1-81185

Unit Size: 0.1 ml

Store at 4C short term. Aliquot and store at -20C long term. Avoid freeze-thaw cycles.

www.novusbio.com



technical@novusbio.com

Publications: 6

Protocols, Publications, Related Products, Reviews, Research Tools and Images at:
www.novusbio.com/NBP1-81185

Updated 12/26/2024 v.20.1

Earn rewards for product
reviews and publications.

Submit a publication at www.novusbio.com/publications

Submit a review at www.novusbio.com/reviews/destination/NBP1-81185



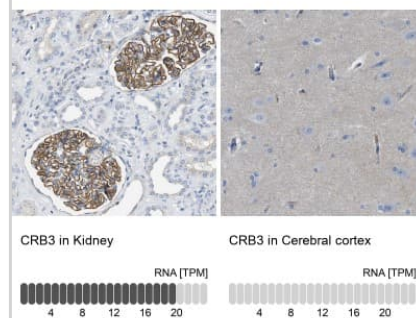
NBP1-81185

CRB3 Antibody

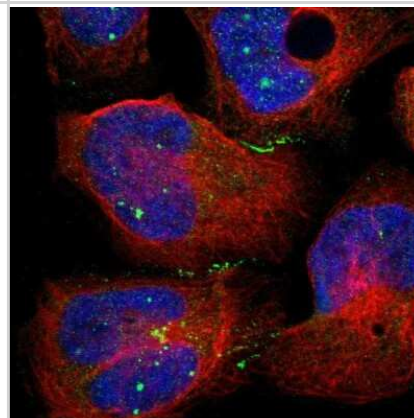
Product Information	
Unit Size	0.1 ml
Concentration	Concentrations vary lot to lot. See vial label for concentration. If unlisted please contact technical services.
Storage	Store at 4C short term. Aliquot and store at -20C long term. Avoid freeze-thaw cycles.
Clonality	Polyclonal
Preservative	0.02% Sodium Azide
Isotype	IgG
Purity	Immunogen affinity purified
Buffer	PBS (pH 7.2) and 40% Glycerol
Product Description	
Host	Rabbit
Gene ID	92359
Gene Symbol	CRB3
Species	Human, Mouse
Reactivity Notes	Mouse reactivity reported in scientific literature (PMID: 29155075).
Immunogen	This antibody was developed against Recombinant Protein corresponding to amino acids: VRKLREKRQTEGTYRPSSEEQFSHAAEARAPQDSKETVQGCLPI
Product Application Details	
Applications	Western Blot, Immunocytochemistry/ Immunofluorescence, Immunohistochemistry, Immunohistochemistry-Paraffin, Immunoprecipitation
Recommended Dilutions	Western Blot Reported in scientific literature (PMID:34404733), Immunohistochemistry 1:200 - 1:500, Immunocytochemistry/ Immunofluorescence 0.25-2 ug/ml, Immunoprecipitation Reported in scientific literature (PMID:34404733), Immunohistochemistry-Paraffin 1:200 - 1:500
Application Notes	For IHC-Paraffin, HIER pH 6 retrieval is recommended. ICC/IF Fixation Permeabilization: Use PFA/Triton X-100.

Images

Immunohistochemistry-Paraffin: CRB3 Antibody [NBP1-81185] - Analysis in human kidney and cerebral cortex tissues using NBP1-81185 antibody. Corresponding CRB3 RNA-seq data are presented for the same tissues.



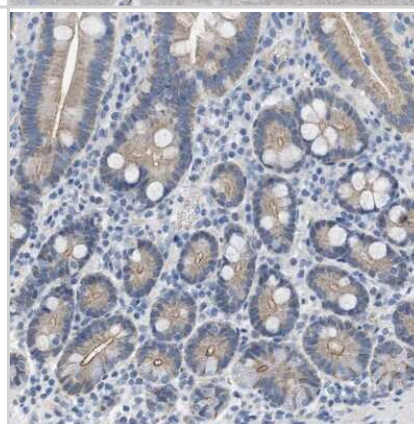
Immunocytochemistry/Immunofluorescence: CRB3 Antibody [NBP1-81185] - Staining of human cell line U-2 OS shows localization to cell junctions. Antibody staining is shown in green.



Immunohistochemistry-Paraffin: CRB3 Antibody [NBP1-81185] - Staining of human cerebral cortex shows low expression as expected.



Immunohistochemistry-Paraffin: CRB3 Antibody [NBP1-81185] - Staining of human duodenum shows high expression.



Publications

Youk, J, Kim, T Et al. Three-Dimensional Human Alveolar Stem Cell Culture Models Reveal Infection Response to SARS-CoV-2. *Cell Stem Cell* 2020-12-03 [PMID: 33142113] (ICC/IF)

Hwang D, Kim M, Kim S Et al. AMOTL2 mono-ubiquitination by WWP1 promotes contact inhibition by facilitating LATS activation *Life science alliance* 2021-10-01 [PMID: 34404733] (IP, WB)

Engevik AC, Krystofiak ES, Kaji I et al. Recruitment of Polarity Complexes and Tight Junction Proteins to the Site of Apical Bulk Endocytosis *Cellular and molecular gastroenterology and hepatology* 2021-02-03 [PMID: 33548596] (IHC-P, Mouse)

Nyeng P, Heilmann S, Lof-Ohlin ZM et al. p120ctn-Mediated Organ Patterning Precedes and Determines Pancreatic Progenitor Fate *Dev. Cell* 2019-03-05 [PMID: 30853440] (IF/IHC, Mouse)

Jiang X, An W, Yang X et al. Asymmetric distribution of CRUMBS polarity complex proteins from compacted 8-cell to blastocyst stage during mouse preimplantation development. *Gene Expr Patterns* 2018-01-01 [PMID: 29155075] (Mouse)

Freedman BS, Brooks CR, Lam AQ et al. Modelling kidney disease with CRISPR-mutant kidney organoids derived from human pluripotent epiblast spheroids. *Nat Commun* 2015-01-01 [PMID: 26493500] (ICC/IF, Human)





Novus Biologicals USA

10730 E. Briarwood Avenue
Centennial, CO 80112
USA
Phone: 303.730.1950
Toll Free: 1.888.506.6887
Fax: 303.730.1966
nb-customerservice@bio-techne.com

Bio-Techne Canada

21 Canmotor Ave
Toronto, ON M8Z 4E6
Canada
Phone: 905.827.6400
Toll Free: 855.668.8722
Fax: 905.827.6402
canada.inquires@bio-techne.com

Bio-Techne Ltd

19 Barton Lane
Abingdon Science Park
Abingdon, OX14 3NB, United Kingdom
Phone: (44) (0) 1235 529449
Free Phone: 0800 37 34 15
Fax: (44) (0) 1235 533420
info.EMEA@bio-techne.com

General Contact Information

www.novusbio.com
Technical Support: nb-technical@bio-techne.com
Orders: nb-customerservice@bio-techne.com
General: novus@novusbio.com

Limitations

This product is for research use only and is not approved for use in humans or in clinical diagnosis. Primary Antibodies are guaranteed for 1 year from date of receipt.

For more information on our 100% guarantee, please visit www.novusbio.com/guarantee

Earn gift cards/discounts by submitting a review: www.novusbio.com/reviews/submit/NBP1-81185

Earn gift cards/discounts by submitting a publication using this product:
www.novusbio.com/publications

