

Product Datasheet

KDM6A Antibody - BSA Free

NBP1-80628

Unit Size: 0.1 ml

Store at 4C short term. Aliquot and store at -20C long term. Avoid freeze-thaw cycles.

www.novusbio.com



technical@novusbio.com

Reviews: 2 Publications: 9

Protocols, Publications, Related Products, Reviews, Research Tools and Images at:
www.novusbio.com/NBP1-80628

Updated 2/21/2025 v.20.1

Earn rewards for product
reviews and publications.

Submit a publication at www.novusbio.com/publications

Submit a review at www.novusbio.com/reviews/destination/NBP1-80628



NBP1-80628

KDM6A Antibody - BSA Free

Product Information

| | |
|----------------------|--|
| Unit Size | 0.1 ml |
| Concentration | Concentrations vary lot to lot. See vial label for concentration. If unlisted please contact technical services. |
| Storage | Store at 4C short term. Aliquot and store at -20C long term. Avoid freeze-thaw cycles. |
| Clonality | Polyclonal |
| Preservative | 0.02% Sodium Azide |
| Isotype | IgG |
| Purity | Immunogen affinity purified |
| Buffer | PBS (pH 7.2) and 40% Glycerol |

Product Description

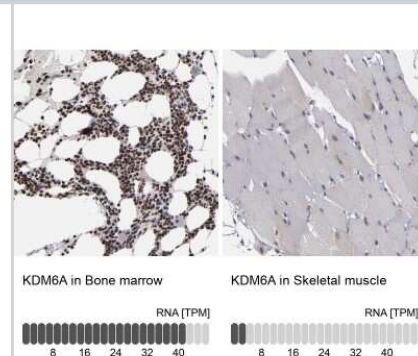
| | |
|-------------------------|--|
| Host | Rabbit |
| Gene ID | 7403 |
| Gene Symbol | KDM6A |
| Species | Human, Mouse |
| Reactivity Notes | Mouse reactivity reported from a verified customer review. |
| Immunogen | This antibody was developed against Recombinant Protein corresponding to amino acids: IGNNHITGSGSNGNVPYLQRNALTLPHNRTNLTSSAEEPWKNQLSNSTQGLHK GQSSHSAGPNGERPLSSTGPSQHLQAAGSGIQNQNGHPTLPSNSVTQGAALN HLSSHATSGGQQGITLTKEKPSGNILTVPETSRT |

Product Application Details

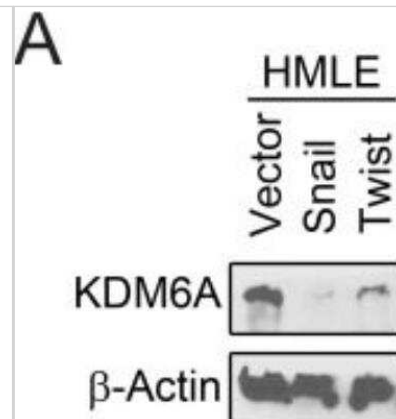
| | |
|------------------------------|---|
| Applications | Western Blot, Immunocytochemistry/ Immunofluorescence, Immunohistochemistry, Immunohistochemistry-Paraffin |
| Recommended Dilutions | Western Blot 0.04 - 0.4 ug/mL, Immunohistochemistry 1:200 - 1:500, Immunocytochemistry/ Immunofluorescence Reported in scientific literature (PMID: 32071397)., Immunohistochemistry-Paraffin 1:200 - 1:500 |
| Application Notes | For IHC-Paraffin, HIER pH 6 retrieval is recommended. |

Images

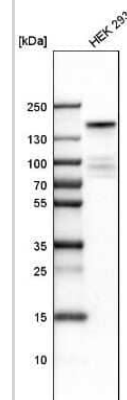
Immunohistochemistry-Paraffin: KDM6A Antibody [NBP1-80628] - Staining in human bone marrow and skeletal muscle tissues using NBP1-80628 antibody. Corresponding KDM6A RNA-seq data are presented for the same tissues.



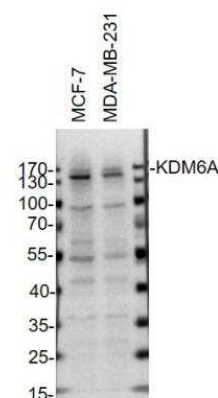
Western Blot: KDM6A Antibody [NBP1-80628] - HMLE cells were transduced with either an empty vector (HMLE-Vector), or genes encoding the EMT-inducing transcription factors Snail (HMLE-Snail) or Twist (HMLE-Twist) [4]. Whole-cell lysates were analyzed by immunoblotting for KDM6A. beta-actin was used as a loading control. Image collected and cropped by CiteAb from the following publication (<https://pubmed.ncbi.nlm.nih.gov/29029452/>) licensed under a CC-BY license.



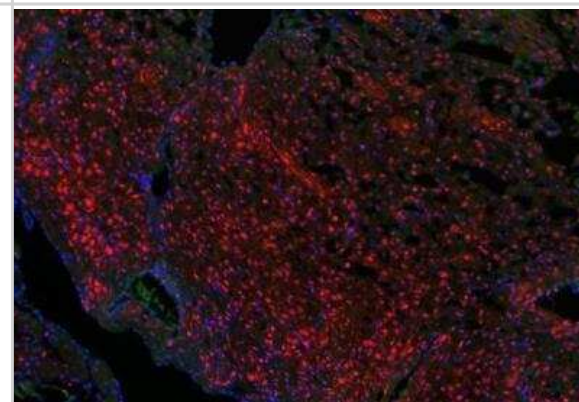
Western Blot: KDM6A Antibody [NBP1-80628] - Analysis in human cell line HEK 293.



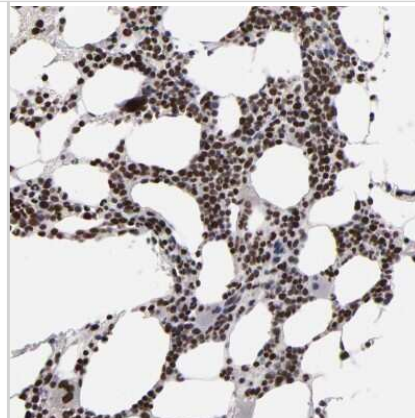
Western Blot: KDM6A Antibody [NBP1-80628] - MCF-7 and MDA-MB-231 whole cell lysates (40 ug/lane). 10% SDS-PAGE. KDM6A Antibody (NBP1-80628) primary antibody at 1:1000, 4C, overnight. Western blot image submitted by a verified customer review.



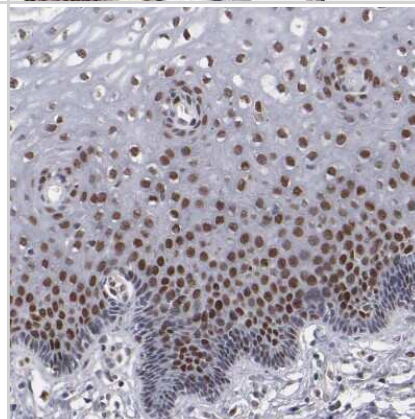
Immunohistochemistry-Paraffin: KDM6A Antibody [NBP1-80628] - Red: UTX nuclear colocalization with DAPI (in blue). Image submitted by a verified customer review.



Immunohistochemistry-Paraffin: KDM6A Antibody [NBP1-80628] - Staining of human bone marrow shows high expression.



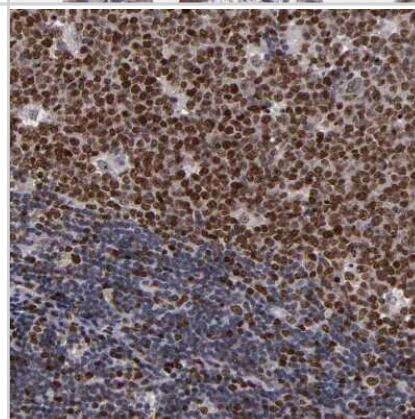
Immunohistochemistry-Paraffin: KDM6A Antibody [NBP1-80628] - Staining of human cervix shows moderate to strong nuclear positivity in squamous epithelial cells.



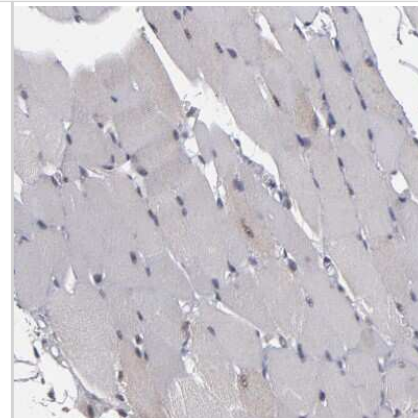
Immunohistochemistry-Paraffin: KDM6A Antibody [NBP1-80628] - Staining of human Fallopian tube shows moderate nuclear positivity in glandular cells.



Immunohistochemistry-Paraffin: KDM6A Antibody [NBP1-80628] - Staining of human lymph node shows moderate to strong nuclear positivity in germinal center cells.



Immunohistochemistry-Paraffin: KDM6A Antibody [NBP1-80628] - Staining of human skeletal muscle shows no positivity in myocytes as expected.



Publications

Sohn HS, Choi JW, Jhun J Et al. Tolerogenic nanoparticles induce type II collagen-specific regulatory T cells and ameliorate osteoarthritis Sci Adv 2022-11-25 [PMID: 36427299] (IF/IHC, Mouse)

Details:

Citation using the FITC version of this antibody.

Thaler R, Khani F, Sturmlechner I et al. Vitamin C epigenetically controls osteogenesis and bone mineralization Nature communications 2022-10-06 [PMID: 36202795] (WB, Mouse)

Yang Y, Chen C, Zuo Q Et al. NARF is a hypoxia-induced coactivator for OCT4-mediated breast cancer stem cell specification Sci Adv 2022-12-09 [PMID: 36490339] (WB, Chemotaxis, Human)

Details:

Citation using the DyLight 405 version of this antibody.

de Souza AF, Bressan FF, Pieri NCG Et al. Generation of Primordial Germ Cell-like Cells from iPSCs Derived from Turner Syndrome Patients Cells 2021-11-10 [PMID: 34831322] (ICC/IF, Human)

Yassin NYS, AbouZid SF, El-Kalaawy AM Et al. Silybum marianum total extract, silymarin and silibinin abate hepatocarcinogenesis and hepatocellular carcinoma growth via modulation of the HGF/c-Met, Wnt/beta-catenin, and PI3K/Akt/mTOR signaling pathways Biomedicine & pharmacotherapy = Biomedecine & pharmacotherapie 2021-11-12 [PMID: 34781148] (ICC/IF, Human)

Kim J Investigating miR-23a/b Regulation of KDM6A Protein Expression in Epithelial-Mesenchymal Transition Using Breast Cancer Cell Models Thesis 2021-01-01

Lu H, Xie Y, Tran L et al. Chemotherapy-induced S100A10 recruits KDM6A to facilitate OCT4-mediated breast cancer stemness J Clin Invest. 2020-05-19 [PMID: 32427586] (KD, IP, WB, Human)

Kato H, Asamitsu K, Sun W et al. Cancer-derived UTX TPR mutations G137V and D336G impair interaction with MLL3/4 complexes and affect UTX subcellular localization Oncogene 2020-02-18 [PMID: 32071397] (ICC/IF, Human)

Taube JH, Sphyris N, Johnson KS et al. The H3K27me3-demethylase KDM6A is suppressed in breast cancer stem-like cells, and enables the resolution of bivalency during the mesenchymal-epithelial transition. Oncotarget. 2017-09-12 [PMID: 29029452] (WB, Human)



Novus Biologicals USA

10730 E. Briarwood Avenue
Centennial, CO 80112
USA
Phone: 303.730.1950
Toll Free: 1.888.506.6887
Fax: 303.730.1966
nb-customerservice@bio-techne.com

Bio-Techne Canada

21 Canmotor Ave
Toronto, ON M8Z 4E6
Canada
Phone: 905.827.6400
Toll Free: 855.668.8722
Fax: 905.827.6402
canada.inquires@bio-techne.com

Bio-Techne Ltd

19 Barton Lane
Abingdon Science Park
Abingdon, OX14 3NB, United Kingdom
Phone: (44) (0) 1235 529449
Free Phone: 0800 37 34 15
Fax: (44) (0) 1235 533420
info.EMEA@bio-techne.com

General Contact Information

www.novusbio.com
Technical Support: nb-technical@bio-techne.com
Orders: nb-customerservice@bio-techne.com
General: novus@novusbio.com

Products Related to NBP1-80628

| | |
|---------------|---|
| NBP1-80628PEP | KDM6A Recombinant Protein Antigen |
| HAF008 | Goat anti-Rabbit IgG Secondary Antibody [HRP] |
| NB7160 | Goat anti-Rabbit IgG (H+L) Secondary Antibody [HRP] |
| NBP2-24891 | Rabbit IgG Isotype Control |

Limitations

This product is for research use only and is not approved for use in humans or in clinical diagnosis. Primary Antibodies are guaranteed for 1 year from date of receipt.

For more information on our 100% guarantee, please visit www.novusbio.com/guarantee

Earn gift cards/discounts by submitting a review: www.novusbio.com/reviews/submit/NBP1-80628

Earn gift cards/discounts by submitting a publication using this product:
www.novusbio.com/publications

