

Product Datasheet

MEF2D Antibody NBP1-80567

Unit Size: 0.1 ml

Store at 4C. Do not freeze.

www.novusbio.com



technical@novusbio.com

Publications: 1

Protocols, Publications, Related Products, Reviews, Research Tools and Images at:
www.novusbio.com/NBP1-80567

Updated 10/23/2024 v.20.1

Earn rewards for product
reviews and publications.

Submit a publication at www.novusbio.com/publications

Submit a review at www.novusbio.com/reviews/destination/NBP1-80567



NBP1-80567**MEF2D Antibody**

Product Information	
Unit Size	0.1 ml
Concentration	0.2 mg/ml
Storage	Store at 4C. Do not freeze.
Clonality	Polyclonal
Preservative	0.09% Sodium Azide
Isotype	IgG
Purity	Immunogen affinity purified
Buffer	TBS and 0.1% BSA

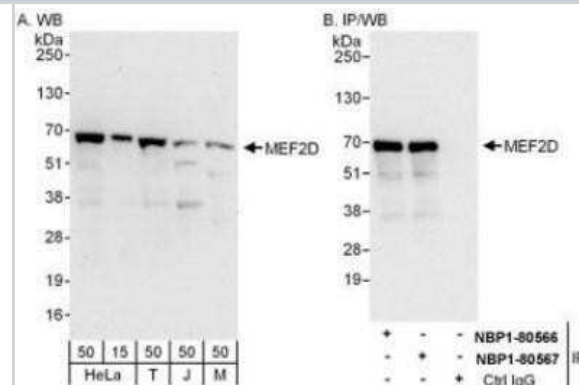
Product Description	
Host	Rabbit
Gene ID	4209
Gene Symbol	MEF2D
Species	Human, Mouse
Immunogen	The immunogen this antibody was made to, maps to a region between residue 475 and 521 of human Myocyte Enhancer Factor 2D using the numbering given in entry NP_005911.1 (GenelD 4209).

Product Application Details	
Applications	Western Blot, Immunohistochemistry, Immunohistochemistry-Paraffin, Immunoprecipitation
Recommended Dilutions	Western Blot 1:2000-1:10000, Immunohistochemistry 1:100 - 1:500, Immunoprecipitation 2-10 ug/mg, Immunohistochemistry-Paraffin 1:100- 1:500
Application Notes	Epitope retrieval with citrate buffer pH6.0 is recommended for FFPE tissue sections.

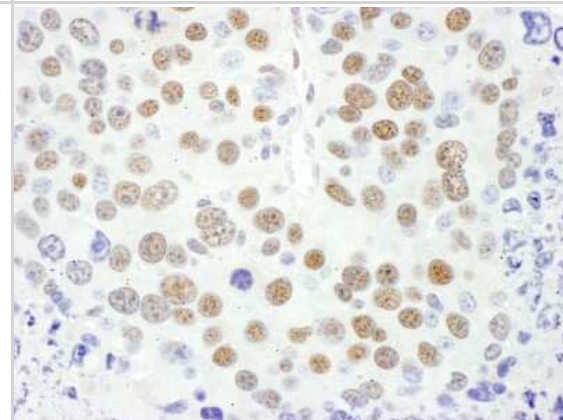


Images

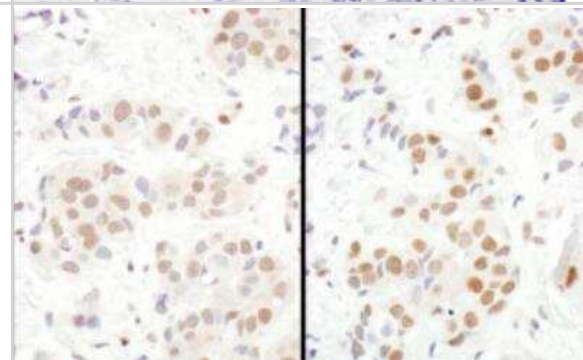
Western Blot: MEF2D Antibody [NBP1-80567] - Whole cell lysate from HeLa (15 and 50 mcg for WB; 1 mg for IP, 20% of IP loaded), 293T (T; 50 mcg), Jurkat (J; 50 mcg) and mouse NIH3T3 (M; 50 mcg) cells. Antibodies: Affinity purified rabbit anti-MEF2D antibody used for WB at 0.04 mcg/ml (A) and 1 mcg/ml (B) and used for IP at 6 mcg/mg lysate. MEF2D was also immunoprecipitated by rabbit anti-MEF2D antibody NBP1-80566, which recognizes an upstream epitope.



Immunohistochemistry-Paraffin: MEF2D Antibody [NBP1-80567] - Section of mouse renal cell carcinoma. Antibody: Affinity purified rabbit anti-MEF2D used at a dilution of 1:200 (1ug/ml). Detection: DAB. Counterstain: Hematoxylin (blue).



Immunohistochemistry-Paraffin: MEF2D Antibody [NBP1-80567] - FFPE serial sections of human breast carcinoma. Antibody: Affinity purified rabbit anti-MEF2D, left image and 1, right image) used at a dilution of 1:200 (1ug/ml). Detection: DAB. Counterstain: Hematoxylin (blue).



Publications

Gnczi M, Teixeira JMC, Barrera-Vilarmau S et al. Alternatively spliced exon regulates context-dependent MEF2D higher-order assembly during myogenesis Nature communications 2023-03-10 [PMID: 36898987] (Chromatin Immunoprecipitation (ChIP), Mouse)



Novus Biologicals USA

10730 E. Briarwood Avenue
Centennial, CO 80112
USA
Phone: 303.730.1950
Toll Free: 1.888.506.6887
Fax: 303.730.1966
nb-customerservice@bio-techne.com

Bio-Techne Canada

21 Canmotor Ave
Toronto, ON M8Z 4E6
Canada
Phone: 905.827.6400
Toll Free: 855.668.8722
Fax: 905.827.6402
canada.inquires@bio-techne.com

Bio-Techne Ltd

19 Barton Lane
Abingdon Science Park
Abingdon, OX14 3NB, United Kingdom
Phone: (44) (0) 1235 529449
Free Phone: 0800 37 34 15
Fax: (44) (0) 1235 533420
info.EMEA@bio-techne.com

General Contact Information

www.novusbio.com
Technical Support: nb-technical@bio-techne.com
Orders: nb-customerservice@bio-techne.com
General: novus@novusbio.com

Products Related to NBP1-80567

HAF008	Goat anti-Rabbit IgG Secondary Antibody [HRP]
NB7160	Goat anti-Rabbit IgG (H+L) Secondary Antibody [HRP]
NBP2-24891	Rabbit IgG Isotype Control
H00004209-P01-10ug	Recombinant Human MEF2D GST (N-Term) Protein

Limitations

This product is for research use only and is not approved for use in humans or in clinical diagnosis. Primary Antibodies are guaranteed for 1 year from date of receipt.

For more information on our 100% guarantee, please visit www.novusbio.com/guarantee

Earn gift cards/discounts by submitting a review: www.novusbio.com/reviews/submit/NBP1-80567

Earn gift cards/discounts by submitting a publication using this product:
www.novusbio.com/publications

