

# Product Datasheet

## RPS16 Antibody - BSA Free

### NBP1-80025

Unit Size: 100ul

Store at 4C short term. Aliquot and store at -20C long term. Avoid freeze-thaw cycles.

[www.novusbio.com](http://www.novusbio.com)



[technical@novusbio.com](mailto:technical@novusbio.com)

#### Publications: 2

Protocols, Publications, Related Products, Reviews, Research Tools and Images at:  
[www.novusbio.com/NBP1-80025](http://www.novusbio.com/NBP1-80025)

Updated 2/21/2025 v.20.1

Earn rewards for product  
reviews and publications.

Submit a publication at [www.novusbio.com/publications](http://www.novusbio.com/publications)

Submit a review at [www.novusbio.com/reviews/destination/NBP1-80025](http://www.novusbio.com/reviews/destination/NBP1-80025)



**NBP1-80025**

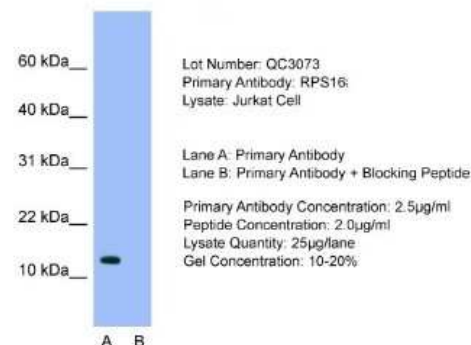
RPS16 Antibody - BSA Free

Product Information	
Unit Size	100ul
Concentration	1 mg/ml
Storage	Store at 4C short term. Aliquot and store at -20C long term. Avoid freeze-thaw cycles.
Clonality	Polyclonal
Preservative	0.09% Sodium Azide
Isotype	IgG
Purity	Protein A purified
Buffer	PBS, 2% Sucrose
Target Molecular Weight	16 kDa
Product Description	
Description	The addition of 50% glycerol is optional for those storing this antibody at -20C and not aliquoting smaller units. However, please note that glycerol may interrupt some downstream antibody applications and should be added with caution.
Host	Rabbit
Gene ID	6217
Gene Symbol	RPS16
Species	Human
Immunogen	Synthetic peptide directed towards the N terminal of human RPS16. Peptide sequence SKGPLQSVQVFGRKKTATAVAHCKRGNGLIKVNGRPLEMIEPRTLQYKLL. The peptide sequence for this immunogen was taken from within the described region.
Product Application Details	
Applications	Western Blot, Immunohistochemistry, Immunohistochemistry-Paraffin
Recommended Dilutions	Western Blot 1.0 ug/ml, Immunohistochemistry 1:10-1:500, Immunohistochemistry-Paraffin 1:10-1:500

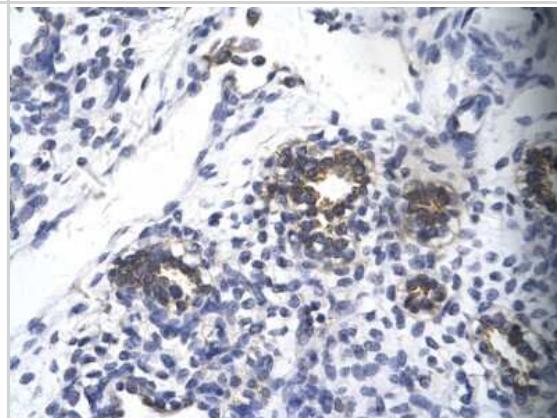


## Images

Western Blot: RPS16 Antibody [NBP1-80025] - Sample Tissue: Jurkat cell lysates, Lane A: Primary Antibody, Lane B: Primary Antibody + Blocking Peptide, Primary Antibody Concentration: 2.5ug/ml, Peptide Concentration: 4.0ug/ml, Lysate Quantity: 25ug/lane



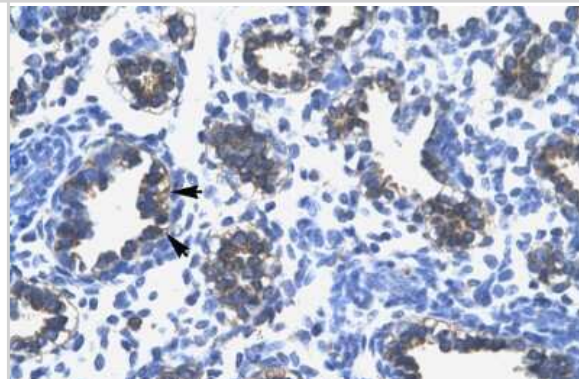
Immunohistochemistry: RPS16 Antibody [NBP1-80025] - Human alveolar cell Cellular data: Epithelial cells of renal tubule Antibody Concentration: 4.0-8.0 ug/ml Magnification: 400X.



Western Blot: RPS16 Antibody [NBP1-80025] - Titration: 1.25ug/ml  
Positive Control: Jurkat cell lysate.



Immunohistochemistry-Paraffin: RPS16 Antibody [NBP1-80025] - Human Lung Alveolar cells (indicated with arrows), 4-8ug/ml.



## Publications

Arpit Dheeraj, Fernando Jose Garcia Marques, Dhanir Tailor, Abel Bermudez, Angel Resendez, Mallesh Pandrala, Benedikt Grau, Praveen Kumar, Carrsyn B. Haley, Alexander Honkala, Praveen Kujur, Stefanie S. Jeffrey, Sharon Pitteri, Sanjay V. Malhotra Inhibition of protein translational machinery in triple-negative breast cancer as a promising therapeutic strategy Cell Reports Medicine 2024-05-09 [PMID: 38729158]

Lafita-Navarro MC, Hao YH, Jiang C et al. ZNF692 organizes a hub specialized in 40S ribosomal subunit maturation enhancing translation in rapidly proliferating cells Cell reports 2023-10-31 [PMID: 37851577] (Western Blot, Human)





### **Novus Biologicals USA**

10730 E. Briarwood Avenue  
Centennial, CO 80112  
USA  
Phone: 303.730.1950  
Toll Free: 1.888.506.6887  
Fax: 303.730.1966  
nb-customerservice@bio-techne.com

### **Bio-Techne Canada**

21 Canmotor Ave  
Toronto, ON M8Z 4E6  
Canada  
Phone: 905.827.6400  
Toll Free: 855.668.8722  
Fax: 905.827.6402  
canada.inquires@bio-techne.com

### **Bio-Techne Ltd**

19 Barton Lane  
Abingdon Science Park  
Abingdon, OX14 3NB, United Kingdom  
Phone: (44) (0) 1235 529449  
Free Phone: 0800 37 34 15  
Fax: (44) (0) 1235 533420  
info.EMEA@bio-techne.com

### **General Contact Information**

www.novusbio.com  
Technical Support: nb-technical@bio-  
techne.com  
Orders: nb-customerservice@bio-techne.com  
General: novus@novusbio.com

### **Products Related to NBP1-80025**

---

HAF008	Goat anti-Rabbit IgG Secondary Antibody [HRP]
NB7160	Goat anti-Rabbit IgG (H+L) Secondary Antibody [HRP]
NBP2-24891	Rabbit IgG Isotype Control
NBP2-23430	Recombinant Human RPS16 His Protein

---

### **Limitations**

This product is for research use only and is not approved for use in humans or in clinical diagnosis. Primary Antibodies are guaranteed for 1 year from date of receipt.

For more information on our 100% guarantee, please visit [www.novusbio.com/guarantee](http://www.novusbio.com/guarantee)

Earn gift cards/discounts by submitting a review: [www.novusbio.com/reviews/submit/NBP1-80025](http://www.novusbio.com/reviews/submit/NBP1-80025)

Earn gift cards/discounts by submitting a publication using this product:  
[www.novusbio.com/publications](http://www.novusbio.com/publications)

