

# Product Datasheet

## Recombinant Human Proteasome 20S beta 6 His Protein NBP1-78850-50ug

Unit Size: 50 ug

Store at 4C short term. Aliquot and store at -20C long term. Avoid freeze-thaw cycles.

[www.novusbio.com](http://www.novusbio.com)



[technical@novusbio.com](mailto:technical@novusbio.com)

Protocols, Publications, Related Products, Reviews, Research Tools and Images at:  
[www.novusbio.com/NBP1-78850](http://www.novusbio.com/NBP1-78850)

Updated 10/23/2024 v.20.1

Earn rewards for product  
reviews and publications.

Submit a publication at [www.novusbio.com/publications](http://www.novusbio.com/publications)

Submit a review at [www.novusbio.com/reviews/destination/NBP1-78850](http://www.novusbio.com/reviews/destination/NBP1-78850)



**NBP1-78850-50ug**

Recombinant Human Proteasome 20S beta 6 His Protein

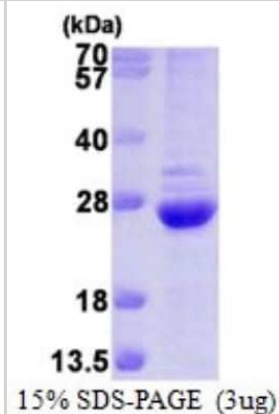
Product Information	
Unit Size	50 ug
Concentration	1 mg/ml
Storage	Store at 4C short term. Aliquot and store at -20C long term. Avoid freeze-thaw cycles.
Preservative	No Preservative
Purity	>85%, by SDS-PAGE
Buffer	20 mM Tris-HCl buffer (pH 8.0), 10% glycerol, 1 mM DTT, 0.15 M NaCl
Target Molecular Weight	24.2 kDa

Product Description	
Description	<p>A recombinant protein with a N-Terminal His-tag and corresponding to the amino acids 35-239 of Human Proteasome 20S beta 6</p> <p><b>Source:</b> <i>E.coli</i></p> <p><b>Amino Acid Sequence:</b> MGSSHHHHHH SGLVPRGSH MTTIMAVQFD GGVVLGADSR TTTGSYIANR VTDKLTPIHD RIFCCRSRSA ADTQAVADAV TYQLGFHSIE LNEPPLVHTA ASLFKEMCYR YREDLMAGII IAGWDPQEGG QVYSVPMGGM MVRQSFAIGG SGSSYIYGIV DATYREGMTK EECLQFTANA LALAMERDGS SGGVIRLAAI AESGVERQVL LGDQIPKFAV ATLPAA</p>
Gene ID	5694
Gene Symbol	PSMB6
Species	Human

Product Application Details	
Applications	SDS-Page
Recommended Dilutions	SDS-Page

**Images**

SDS-Page: Recombinant Human Proteasome 20S beta 6 Protein [NBP1-78850] - 15% SDS-PAGE (3ug)





### **Novus Biologicals USA**

10730 E. Briarwood Avenue  
Centennial, CO 80112  
USA  
Phone: 303.730.1950  
Toll Free: 1.888.506.6887  
Fax: 303.730.1966  
nb-customerservice@bio-techne.com

### **Bio-Techne Canada**

21 Canmotor Ave  
Toronto, ON M8Z 4E6  
Canada  
Phone: 905.827.6400  
Toll Free: 855.668.8722  
Fax: 905.827.6402  
canada.inquires@bio-techne.com

### **Bio-Techne Ltd**

19 Barton Lane  
Abingdon Science Park  
Abingdon, OX14 3NB, United Kingdom  
Phone: (44) (0) 1235 529449  
Free Phone: 0800 37 34 15  
Fax: (44) (0) 1235 533420  
info.EMEA@bio-techne.com

### **General Contact Information**

www.novusbio.com  
Technical Support: nb-technical@bio-techne.com  
Orders: nb-customerservice@bio-techne.com  
General: novus@novusbio.com

### **Products Related to NBP1-78850-50ug**

---

NBP2-57831PEP	Proteasome 20S beta 6 Recombinant Protein Antigen
285-IF-100	IFN-gamma [Unconjugated]
H00005694-M02	Proteasome 20S beta 6 Antibody (S51)
NB300-221	GAPDH Antibody (1D4)

---

### **Limitations**

This product is for research use only and is not approved for use in humans or in clinical diagnosis. Peptides and proteins are guaranteed for 3 months from date of receipt.

For more information on our 100% guarantee, please visit [www.novusbio.com/guarantee](http://www.novusbio.com/guarantee)

Earn gift cards/discounts by submitting a review: [www.novusbio.com/reviews/submit/NBP1-78850](http://www.novusbio.com/reviews/submit/NBP1-78850)

Earn gift cards/discounts by submitting a publication using this product:  
[www.novusbio.com/publications](http://www.novusbio.com/publications)

