

Product Datasheet

Human IgE Antibody (Fc-2001) NBP1-78601

Unit Size: 100ug

Store at 4C short term. Aliquot and store at -20C long term. Avoid freeze-thaw cycles.

www.novusbio.com



technical@novusbio.com

Protocols, Publications, Related Products, Reviews, Research Tools and Images at:
www.novusbio.com/NBP1-78601

Updated 9/9/2025 v.20.1

Earn rewards for product
reviews and publications.

Submit a publication at www.novusbio.com/publications

Submit a review at www.novusbio.com/reviews/destination/NBP1-78601



NBP1-78601

Human IgE Antibody (Fc-2001)

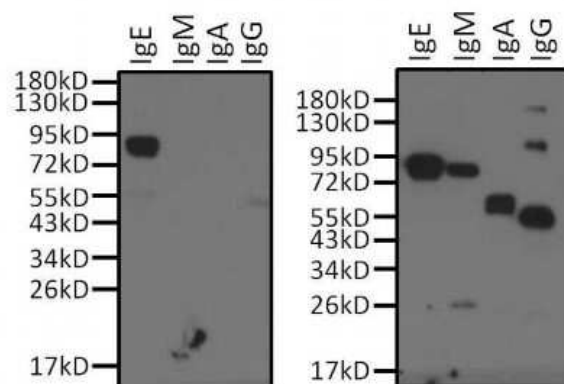
Product Information	
Unit Size	100ug
Concentration	1 mg/ml
Storage	Store at 4C short term. Aliquot and store at -20C long term. Avoid freeze-thaw cycles.
Clonality	Monoclonal
Clone	Fc-2001
Preservative	0.05% Sodium Azide
Isotype	IgG2b
Purity	Ion exchange chromatography
Buffer	PBS, potassium phosphate with 1mg/ml BSA, and 50% glycerol

Product Description	
Description	Novus Biologicals Mouse Human IgE Antibody (Fc-2001) (NBP1-78601) is a monoclonal antibody validated for use in WB, ELISA and IP. All Novus Biologicals antibodies are covered by our 100% guarantee.
Host	Mouse
Species	Human
Immunogen	Human Myeloma IgE

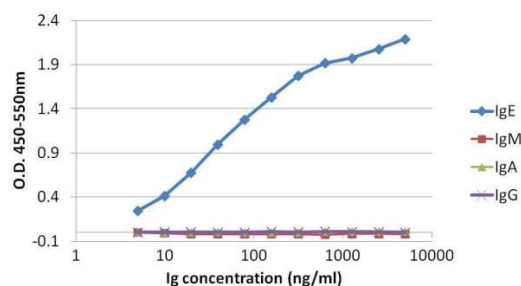
Product Application Details	
Applications	Western Blot, ELISA, Immunoprecipitation, Radioimmunoassay
Recommended Dilutions	Western Blot 1:500 - 1:2000, ELISA 1:100 - 1:2000, Immunoprecipitation 1:10 - 1:500, Radioimmunoassay 1:100 - 1:2000

Images

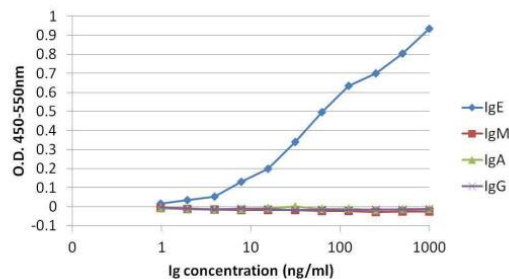
Western Blot: Human IgE Antibody (Fc-2001) [NBP1-78601] - Analysis of 0.5ug of purified human IgE, IgM, IgA and IgG per well and 10ul of PageRuler Prestained Protein Ladder per well.



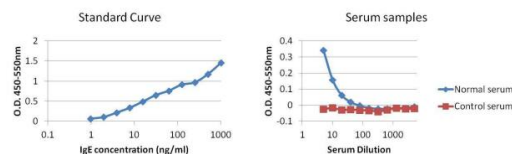
Direct ELISA analysis of human IgE was performed by coating wells of a 96-well plate with 100ul per well of human IgE, IgM, IgA, or IgG, diluted in carbonate/bicarbonate buffer at concentrations ranging from 5-5000ng/ml, and incubating overnight at 4C. The plate was washed and blocked with StartingBlock T20 (TBS) Blocking Buffer (Product # 37543) for at least 30 minutes at room temperature, and then incubated with 100ul per well of a human IgE monoclonal antibody at a concentration of 1ug/ml for 1 hour at room temperature. The plate was washed, and incubated with 100ul per well of an HRP-conjugated goat antimouse IgG Fc secondary antibody at a dilution of 1:8000 for at least 30 minutes at room temperature. Detection was performed by adding 100ul per well of 1-Step Ultra TMB substrate and incubating for a few minutes at room temperature. The reactions were then stopped with TMB Stop Solution. Absorbances were read on a spectrophotometer at 450-550nm.



Sandwich ELISA analysis of human IgE was performed by coating wells of a 96-well plate with 100ul per well of a goat anti-human IgG (H+L) antibody diluted to a concentration of 1ug/ml in carbonate/bicarbonate buffer, and incubating overnight at 4C. The plate was washed and blocked with StartingBlock T20 (TBS) Blocking Buffer for at least 30 minutes at room temperature, and then 100ul per well of human IgE, IgM, IgA, or IgG, diluted in carbonate/bicarbonate buffer at concentrations ranging from 1-1000ng/ml, was added to the plate and incubated for at least 1 hour at room temperature. The plate was washed with 150ul per well of 1X TBST, and 100ul per well of a human IgE monoclonal antibody was added to the wells at a concentration of 1ug/ml, and incubated for 1 hour at room temperature. The plate was washed, and incubated with 100ul per well of an HRP-conjugated goat anti-mouse IgG Fc secondary antibody at a dilution of 1:8000 for at least 30 minutes at room temperature. Detection was performed by adding 100ul per well of 1- Step Ultra TMB substrate and incubating for a few minutes at room temperature. The reactions were then stopped with TMB Stop Solution . Absorbances were read on a spectrophotometer at 450-550nm.



Sandwich ELISA analysis of human IgE was performed by coating wells of a 96-well plate with 100ul per well of a goat anti-human IgG (H+L) antibody diluted to a concentration of 1ug/ml in carbonate/bicarbonate buffer, and incubating overnight at 4C. The plate was washed and blocked with Starting block T20 (TBS) Blocking Buffer for at least 30 minutes at room temperature, and then 100ul per well of human IgE, diluted in 1X PBS at concentrations ranging from 1-1000ng/ml (left panel), and normal human serum or serum from an asthma patient on anti-asthma prescription medications (control serum, right panel), diluted in 1X PBS at dilutions ranging from 1:5 to 1:5000, was added to the plate and incubated for at least 1 hour at room temperature. The plate was washed with 150ul per well of 1X TBST, and 100ul of a human IgE monoclonal antibody was added to the wells at a concentration of 1ug/ml, and incubated for 1 hour at room temperature. The plate was washed and incubated with 100ul per well of an HRP-conjugated goat anti-mouse IgG Fc secondary antibody at a dilution of 1:8000 for at least 30 minutes at room temperature. Detection was performed by adding 100ul per well of 1- Step Ultra TMB substrate and incubating for a few minutes at room temperature. The reactions were then stopped with TMB Stop Solution. Absorbances were read on a spectrophotometer at 450-550nm.





Novus Biologicals USA

10730 E. Briarwood Avenue
Centennial, CO 80112
USA
Phone: 303.730.1950
Toll Free: 1.888.506.6887
Fax: 303.730.1966
nb-customerservice@bio-techne.com

Bio-Techne Canada

21 Canmotor Ave
Toronto, ON M8Z 4E6
Canada
Phone: 905.827.6400
Toll Free: 855.668.8722
Fax: 905.827.6402
canada.inquires@bio-techne.com

Bio-Techne Ltd

19 Barton Lane
Abingdon Science Park
Abingdon, OX14 3NB, United Kingdom
Phone: (44) (0) 1235 529449
Free Phone: 0800 37 34 15
Fax: (44) (0) 1235 533420
info.EMEA@bio-techne.com

General Contact Information

www.novusbio.com
Technical Support: nb-technical@bio-techne.com
Orders: nb-customerservice@bio-techne.com
General: novus@novusbio.com

Products Related to NBP1-78601

NBP2-33376H	Blue Marker Antibody (6F4-F6) [HRP]
HAF007	Goat anti-Mouse IgG Secondary Antibody [HRP]
NB7539	Goat anti-Mouse IgG (H+L) Secondary Antibody [HRP]
NBP2-27231	Mouse IgG2b Isotype Control (MPC-11)

Limitations

This product is for research use only and is not approved for use in humans or in clinical diagnosis. Primary Antibodies are guaranteed for 1 year from date of receipt.

For more information on our 100% guarantee, please visit www.novusbio.com/guarantee

Earn gift cards/discounts by submitting a review: www.novusbio.com/reviews/submit/NBP1-78601

Earn gift cards/discounts by submitting a publication using this product:
www.novusbio.com/publications

