

Product Datasheet

SUMO Activating Enzyme E1 (SAE1) [p Ser185] Antibody - BSA Free NBP1-78069

Unit Size: 0.1 mg

Store at -20C short term. Aliquot and store at -80C long term. Avoid freeze-thaw cycles.

www.novusbio.com



technical@novusbio.com

Protocols, Publications, Related Products, Reviews, Research Tools and Images at:
www.novusbio.com/NBP1-78069

Updated 2/21/2025 v.20.1

Earn rewards for product
reviews and publications.

Submit a publication at www.novusbio.com/publications

Submit a review at www.novusbio.com/reviews/destination/NBP1-78069



NBP1-78069**SUMO Activating Enzyme E1 (SAE1) [p Ser185] Antibody - BSA Free**

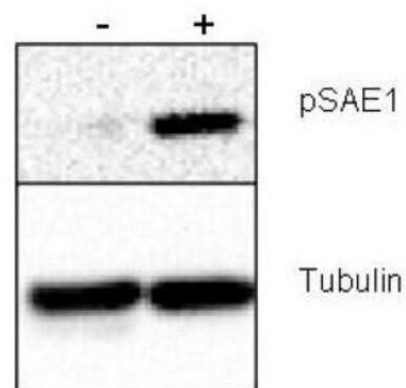
Product Information	
Unit Size	0.1 mg
Concentration	Please see the vial label for concentration. If unlisted please contact technical services.
Storage	Store at -20C short term. Aliquot and store at -80C long term. Avoid freeze-thaw cycles.
Clonality	Polyclonal
Preservative	0.01% Sodium Azide
Isotype	IgG
Purity	Immunogen affinity purified
Buffer	0.02 M Potassium Phosphate, 0.15 M Sodium Chloride, pH 7.2
Product Description	
Description	<p>This purified antibody is directed against human SUMO Activating Enzyme E1 (SAE1) protein. The product was purified from monospecific antiserum by affinity chromatography</p> <p>Store vial at -20C prior to opening. Aliquot contents and freeze at -20C or below for extended storage. Avoid cycles of freezing and thawing. Centrifuge product if not completely clear after standing at room temperature. This product is stable for several weeks at 4C as an undiluted liquid. Dilute only prior to immediate use.</p>
Host	Rabbit
Gene ID	10055
Gene Symbol	SAE1
Species	Human
Reactivity Notes	A BLAST analysis using the sequence of the immunizing peptide was used to suggest that this antibody would react with SUMO Activating Enzyme E1 protein from human (100%), bovine, dog, chimpanzee (96%), mouse (93%), and rat (92%) based on a high degree of sequence homology. Cross reactivity against this protein from other sources has not been determined.
Specificity/Sensitivity	This purified antibody is directed against human SUMO Activating Enzyme E1 protein. This antibody is specific for human SAE1 protein phosphorylated at S185. A BLAST analysis using the sequence of the immunizing peptide was used to suggest that this antibody would react with SUMO Activating Enzyme E1 protein from human (100%), bovine, dog, chimpanzee (96%), mouse (93%), and rat (92%) based on a high degree of sequence homology. Cross reactivity against this protein from other sources has not been determined.
Immunogen	This purified SUMO Activating Enzyme E1 (SAE1) [p Ser185] Antibody was prepared from whole rabbit serum produced by repeated immunizations with a synthetic peptide corresponding to a region surrounding S185 of the human SUMO Activating Enzyme E1 (SAE1) (SAE1) protein. (Uniprot: Q9UBE0)
Product Application Details	
Applications	Western Blot, ELISA
Recommended Dilutions	Western Blot 2 ug/ml, ELISA 1:5000-1:25000

Application Notes

This purified antibody has been tested for use in ELISA and western blot. Specific conditions for reactivity should be optimized by the end user. Expect a band at ~37 kDa in size corresponding to phosphorylated SAE1 protein by western blotting in the appropriate cell lysate or extract. This phospho-specific antibody reacts with human SAE1 pS185 and shows minimal reactivity by ELISA against the non-phosphorylated form of the immunizing peptide.

Images

Western Blot: SUMO Activating Enzyme E1 (SAE1) [p Ser185] Antibody [NBP1-78069] - SUMO Activating Enzyme E1 (SAE1) antibody contains 20 ug human HeLa whole cell protein. Right lane (+) contains 20 ug human HeLa whole cell protein from cells pre-treated with phosphatase inhibitor cocktail to prevent de-phosphorylation of the target. Proteins were separated on a 10% SDS-PAGE and transferred onto nitrocellulose. After blocking with 5% milk-TBST 1 hr at room temperature, the membrane was probed with the primary antibody diluted to 2 ug/mL at room temperature for 3 hr followed by washes and reaction with HRP-conjugated secondary and ECL imaging.





Novus Biologicals USA

10730 E. Briarwood Avenue
Centennial, CO 80112
USA
Phone: 303.730.1950
Toll Free: 1.888.506.6887
Fax: 303.730.1966
nb-customerservice@bio-techne.com

Bio-Techne Canada

21 Canmotor Ave
Toronto, ON M8Z 4E6
Canada
Phone: 905.827.6400
Toll Free: 855.668.8722
Fax: 905.827.6402
canada.inquires@bio-techne.com

Bio-Techne Ltd

19 Barton Lane
Abingdon Science Park
Abingdon, OX14 3NB, United Kingdom
Phone: (44) (0) 1235 529449
Free Phone: 0800 37 34 15
Fax: (44) (0) 1235 533420
info.EMEA@bio-techne.com

General Contact Information

www.novusbio.com
Technical Support: nb-technical@bio-techne.com
Orders: nb-customerservice@bio-techne.com
General: novus@novusbio.com

Products Related to NBP1-78069

HAF008	Goat anti-Rabbit IgG Secondary Antibody [HRP]
NB7160	Goat anti-Rabbit IgG (H+L) Secondary Antibody [HRP]
NBP2-24891	Rabbit IgG Isotype Control
NBP2-13272PEP	SUMO Activating Enzyme E1 (SAE1) Recombinant Protein Antigen

Limitations

This product is for research use only and is not approved for use in humans or in clinical diagnosis. Primary Antibodies are guaranteed for 1 year from date of receipt.

For more information on our 100% guarantee, please visit www.novusbio.com/guarantee

Earn gift cards/discounts by submitting a review: www.novusbio.com/reviews/submit/NBP1-78069

Earn gift cards/discounts by submitting a publication using this product:
www.novusbio.com/publications

