

Product Datasheet

beta Amyloid Antibody - BSA Free NBP1-78007

Unit Size: 0.1 mg

Store at -20C short term. Aliquot and store at -80C long term. Avoid freeze-thaw cycles.

www.novusbio.com



technical@novusbio.com

Protocols, Publications, Related Products, Reviews, Research Tools and Images at:
www.novusbio.com/NBP1-78007

Updated 2/21/2025 v.20.1

Earn rewards for product
reviews and publications.

Submit a publication at www.novusbio.com/publications

Submit a review at www.novusbio.com/reviews/destination/NBP1-78007



NBP1-78007

beta Amyloid Antibody - BSA Free

Product Information	
Unit Size	0.1 mg
Concentration	Please see the vial label for concentration. If unlisted please contact technical services.
Storage	Store at -20C short term. Aliquot and store at -80C long term. Avoid freeze-thaw cycles.
Clonality	Polyclonal
Preservative	0.01% Sodium Azide
Isotype	IgG
Purity	Immunogen affinity purified
Buffer	0.02 M Potassium Phosphate, 0.15 M Sodium Chloride, pH 7.2

Product Description	
Description	<p>This affinity purified antibody is directed against extracellular region of beta amyloid and is useful in determining its presence in various assays. Polyclonal anti-beta amyloid detects human and mouse beta amyloid. Blast analysis of the sequence of the immunogen shows 100% identity with Human, Guinea Pig, Pig, Cyno Monkey, Dog, Polar Bear, Rabbit, Chimp, Squirrel monkey, and Sheep. Cross reactivity with beta amyloid from other species is likely but has not been determined.</p> <p>Store vial at -20C prior to opening. Aliquot contents and freeze at -20C or below for extended storage. Avoid cycles of freezing and thawing. Centrifuge product if not completely clear after standing at room temperature. This product is stable for several weeks at 4C as an undiluted liquid. Dilute only prior to immediate use.</p>
Host	Rabbit
Gene ID	351
Gene Symbol	APP
Species	Human, Mouse
Reactivity Notes	Cross reactivity with beta amyloid from other species is likely but has not been determined
Specificity/Sensitivity	This affinity purified antibody is directed against extracellular region of beta amyloid and is useful in determining its presence in various assays. Polyclonal anti-beta amyloid detects human and mouse beta amyloid. Blast analysis of the sequence of the immunogen shows 100% identity with Human, Guinea Pig, Pig, Cyno Monkey, Dog, Polar Bear, Rabbit, Chimp, Squirrel monkey, and Sheep. Cross reactivity with beta amyloid from other species is likely but has not been determined.
Immunogen	This antibody was affinity purified from whole rabbit serum prepared by repeated immunizations with a synthetic peptide corresponding to an extracellular region of human beta amyloid conjugated to KLH using maleimide. (Uniprot: P05067)

Product Application Details	
Applications	Western Blot, Dot Blot, ELISA, Immunocytochemistry/ Immunofluorescence, Immunohistochemistry, Immunohistochemistry-Paraffin
Recommended Dilutions	Western Blot 1:1000-1:5000, ELISA 1:10000-1:30000, Immunohistochemistry 1:50-1:200, Immunocytochemistry/ Immunofluorescence 1:50-1:200, Immunohistochemistry-Paraffin 1:10-1:500, Dot Blot

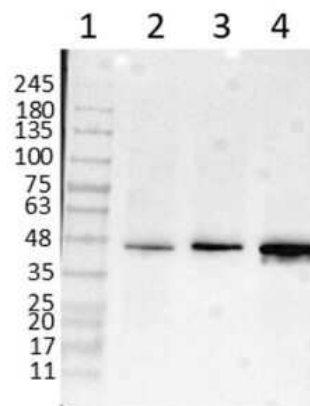


Application Notes

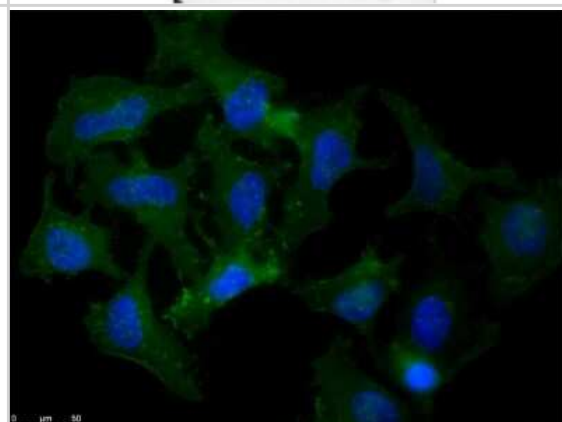
Affinity purified This product has been tested by ELISA, IHC, WB, and IF. A 45.8kDa band is detected in western blot using whole tissue extracts and lysates from mouse and human. In general, we recommend the use of 4% PFA or 10% formalin for fixation of tissues with IHC-paraffin or IHC-frozen application of this antibody.

Images

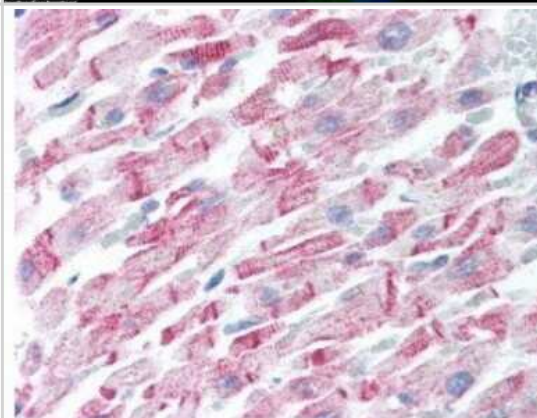
Western Blot: beta Amyloid Antibody [NBP1-78007] - Western Blot of beta Amyloid antibody. Lane 1: Opal Prestained Molecular Weight Marker. Lane 2: HEK293T Whole Cell Lysate. Lane 3: Mouse Brain Whole Cell Lysate. Lane 4: A-172 Whole Cell Lysate. Load: 10ug/lane. Primary Antibody: Anti-beta Amyloid at 1ug/mL overnight at 2-8C. Secondary Antibody: Goat Anti-Rabbit IgG HRP Conjugated at 1:70,000 for 30min at RT. Block: BlockOut Buffer. Predicted MW: ~40-50kDa. Observed MW: ~48kDa.



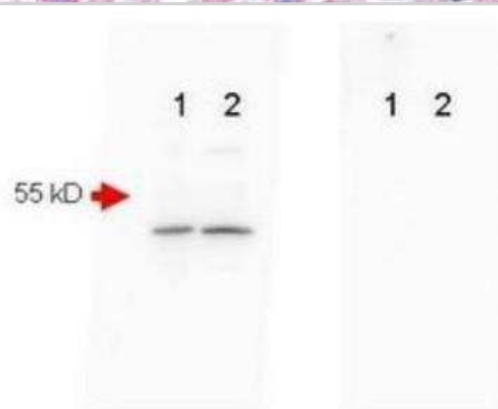
Immunocytochemistry/Immunofluorescence: beta Amyloid Antibody [NBP1-78007]



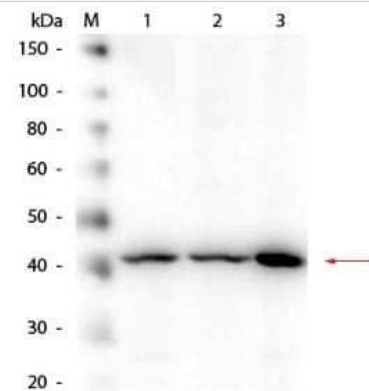
Immunohistochemistry: beta Amyloid Antibody [NBP1-78007] - Human Heart (formalin-fixed, paraffin-embedded) stained with beta Amyloid antibody at 5 ug/ml followed by biotinylated goat anti-rabbit IgG secondary antibody, alkaline phosphatase-streptavidin and chromogen.



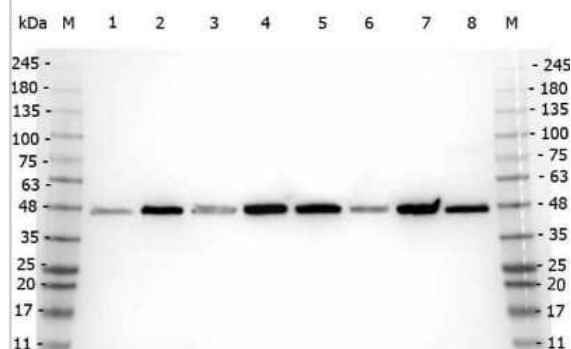
Western Blot: beta Amyloid Antibody [NBP1-78007] - Mouse Brain (Lane 1) and Mouse Spinal Chord (Lane 2) were run on a 4-20% gradient gel, Blocked in 1% BSA-TBS-T 30 min RT and probed with Rb-a-Beta Amyloid 1:1000 in 1% BSA-TBS-T o/n 4C. Note: observed band higher than predicted molecular weight of 5 kDa.



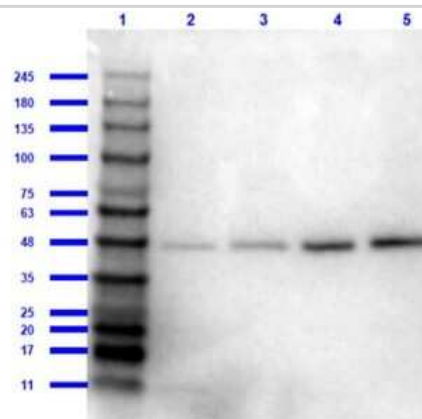
Western Blot: beta Amyloid Antibody [NBP1-78007] - Lane 1: HEK293 WCL. Lane 2: Mouse Brain WCL. Lane 3: A-172 WCL. Load: 10.0ug per lane. Primary antibody: Beta Amyloid Antibody at 1:1,000 overnight at 4C. Secondary antibody: Peroxidase Conjugated Goat Anti Rabbit IgG at 1:40,000 for 30 min at RT. Block for 30 min at RT. Note: observed band higher than predicted molecular weight of 5 kDa.



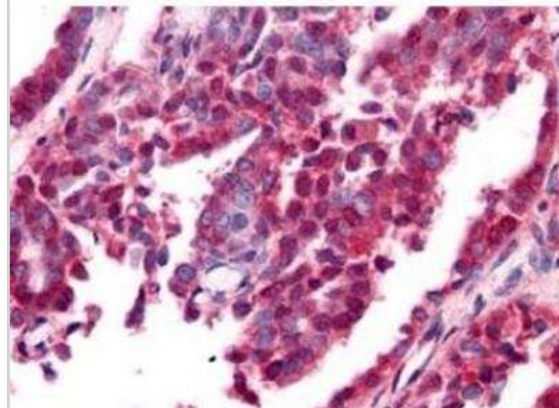
Western Blot: beta Amyloid Antibody [NBP1-78007] - Western Blot of beta Amyloid antibody. Marker: Opal Pre-stained ladder. Lane 1: HEK293 lysate. Lane 2: HeLa Lysate. Lane 3: MCF-7 Lysate. Lane 4: Jurkat Lysate. Lane 5: A431 Lysate. Lane 6: LNCaP Lysate. Lane 7: A-172 Lysate. Lane 8: NIH/3T3 Lysate. Load: 35 ug per lane. Primary antibody: beta Amyloid antibody at 1:5,000 for overnight at 4C. Secondary antibody: Peroxidase rabbit secondary antibody at 1:30,000 for 60 min at RT. Blocking Buffer: 1% Casein-TTBS for 30 min at RT. Predicted MW: ~40-50 kDa. Observed size: ~48 kDa for beta Amyloid.



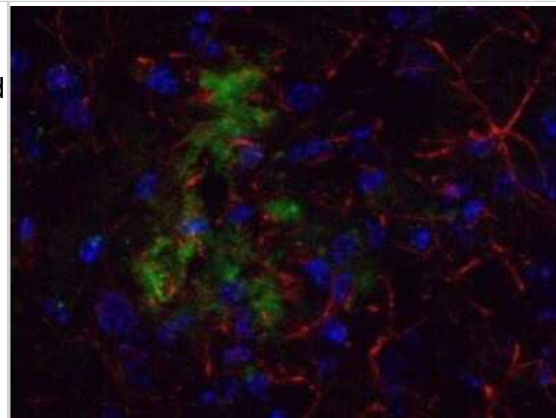
Western Blot: beta Amyloid Antibody [NBP1-78007] - Western Blot of beta Amyloid antibody. Lane 1: Opal Prestained Molecular Weight Marker. Lane 2: HEK293T Whole Cell Lysate. Lane 3: Mouse Brain Whole Cell Lysate. Lane 4: A-172 Whole Cell Lysate. Lane 5: Daudi Whole Cell Lysate. Load: 10ug/lane. Primary Antibody: Anti-beta Amyloid at 1:1000 overnight at 2-8C. Secondary Antibody: Goat Anti-Rabbit IgG HRP Conjugated at 1:70,000 for 30min at RT. Block: BlockOut Buffer. Predicted MW: ~40-50kDa. Observed MW: ~48kDa.



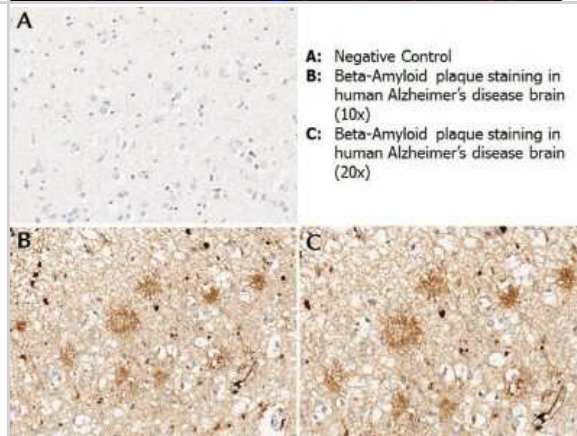
Immunohistochemistry-Paraffin: beta Amyloid Antibody [NBP1-78007] - Human, multi-brain and multi-cancer slides. Within the multi-tumor block, the antibody showed variable levels of nuclear and cytoplasmic staining between individual tumors, with some tumors showing moderate staining. This image shows EGR-1 staining of human ovarian carcinoma.



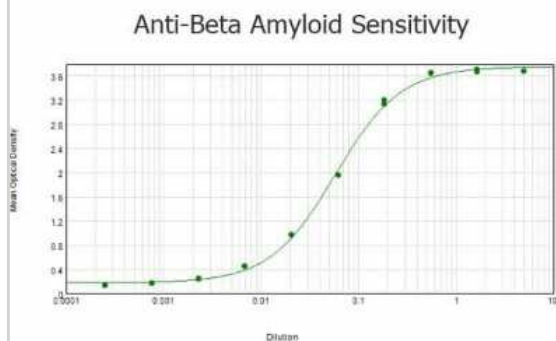
Immunohistochemistry: beta Amyloid Antibody [NBP1-78007] - Immunohistochemical detection of beta Amyloid using beta Amyloid antibody on TG APP23 mouse brain cortex frozen sections. beta Amyloid antibody used at 1/200 and incubated for 2 hours in TBS/BSA/Tween/azide. Fluorescent labelled anti rabbit IgG was then added. Carl Hobbs, King's College London, United Kingdom



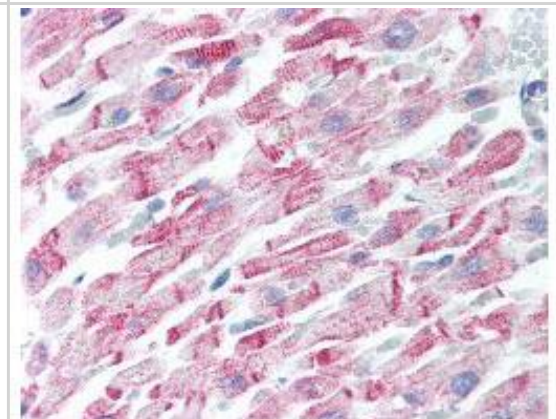
Immunohistochemistry: beta Amyloid Antibody [NBP1-78007] - Immunohistochemistry with beta Amyloid antibody showing amyloid beta plaque staining in human Alzheimer's disease brain at 10x and 20x (B & C). Staining was performed on Leica Bond system using the standard protocol. Formalin fixed/paraffin embedded tissue sections were subjected to antigen retrieval with E1 (Leica Microsystems) retrieval solution for 20 min and then incubated with rabbit beta Amyloid antibody at 1:100 dilution for 60 minutes. Biotinylated Anti-rabbit secondary antibody was used at 1:200 dilution to detect primary antibody. The reaction was developed using streptavidin-HRP conjugated compact polymer system and visualized with chromogen substrate, 3'3-diaminobenzidine substrate (DAB). The sections were then counterstained with hematoxylin to detect cell nuclei.



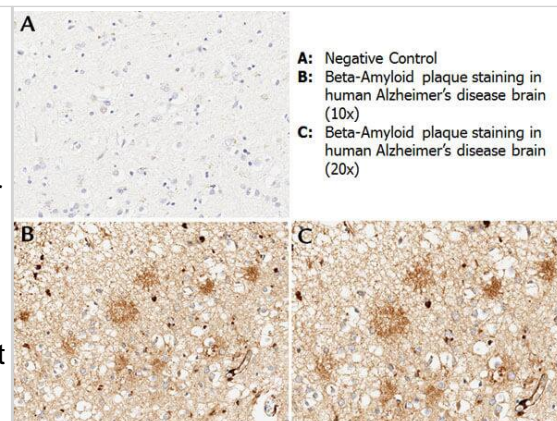
ELISA: beta Amyloid Antibody [NBP1-78007] - ELISA results of purified beta Amyloid antibody tested against BSA-conjugated peptide of immunizing peptide. Each well was coated in duplicate with 0.1ug of conjugate. The starting dilution of antibody was 5ug/ml and the X-axis represents the Log10 of a 3-fold dilution. This titration is a 4-parameter curve fit where the IC50 is defined as the titer of the antibody. Assay performed using 3% fish gel, Goat anti-Rabbit IgG Antibody Peroxidase Conjugated (Min X Bv Ch Gt GP Ham Hs Hu Ms Rt & Sh Serum Proteins) and TMB ELISA Peroxidase Substrate.



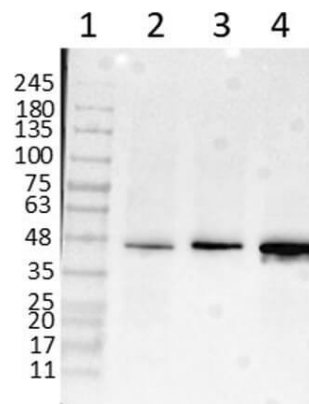
Human Heart (formalin-fixed, paraffin-embedded) stained with beta Amyloid Antibody at 5 ug/ml followed by biotinylated goat anti-rabbit IgG secondary antibody, alkaline phosphatase-streptavidin and chromogen.



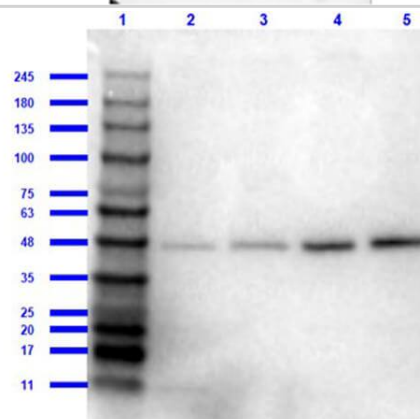
beta Amyloid Antibody showing amyloid beta plaque staining in human Alzheimer's disease brain at 10x and 20x (B & C). Staining was performed on Leica Bond system using the standard protocol. Formalin fixed/paraffin embedded tissue sections were subjected to antigen retrieval with E1 (Leica Microsystems) retrieval solution for 20 min and then incubated with rabbit anti-beta amyloid antibody at 1:100 dilution for 60 minutes. Biotinylated Anti-rabbit secondary antibody was used at 1:200 dilution to detect primary antibody. The reaction was developed using streptavidin-HRP conjugated compact polymer system and visualized with chromogen substrate, 3'3-diamino-benzidine substrate (DAB). The sections were then counterstained with hematoxylin to detect cell nuclei.



Western Blot of Rabbit Anti-Beta Amyloid Antibody. Lane 1: Opal Prestained Molecular Weight Marker



Western Blot of beta Amyloid Antibody. Lane 1: Opal Prestained Molecular Weight Marker





Novus Biologicals USA

10730 E. Briarwood Avenue
Centennial, CO 80112
USA
Phone: 303.730.1950
Toll Free: 1.888.506.6887
Fax: 303.730.1966
nb-customerservice@bio-techne.com

Bio-Techne Canada

21 Canmotor Ave
Toronto, ON M8Z 4E6
Canada
Phone: 905.827.6400
Toll Free: 855.668.8722
Fax: 905.827.6402
canada.inquires@bio-techne.com

Bio-Techne Ltd

19 Barton Lane
Abingdon Science Park
Abingdon, OX14 3NB, United Kingdom
Phone: (44) (0) 1235 529449
Free Phone: 0800 37 34 15
Fax: (44) (0) 1235 533420
info.EMEA@bio-techne.com

General Contact Information

www.novusbio.com
Technical Support: nb-technical@bio-techne.com
Orders: nb-customerservice@bio-techne.com
General: novus@novusbio.com

Products Related to NBP1-78007

HAF008	Goat anti-Rabbit IgG Secondary Antibody [HRP]
NB7160	Goat anti-Rabbit IgG (H+L) Secondary Antibody [HRP]
NBP2-24891	Rabbit IgG Isotype Control
210-TA-005	TNF-alpha [Unconjugated]

Limitations

This product is for research use only and is not approved for use in humans or in clinical diagnosis. Primary Antibodies are guaranteed for 1 year from date of receipt.

For more information on our 100% guarantee, please visit www.novusbio.com/guarantee

Earn gift cards/discounts by submitting a review: www.novusbio.com/reviews/submit/NBP1-78007

Earn gift cards/discounts by submitting a publication using this product:
www.novusbio.com/publications

