

Product Datasheet

Smad1 [p Ser206] Antibody - BSA Free NBP1-77860

Unit Size: 0.1 mg

Store at -20C short term. Aliquot and store at -80C long term. Avoid freeze-thaw cycles.

www.novusbio.com



technical@novusbio.com

Protocols, Publications, Related Products, Reviews, Research Tools and Images at:
www.novusbio.com/NBP1-77860

Updated 2/21/2025 v.20.1

Earn rewards for product
reviews and publications.

Submit a publication at www.novusbio.com/publications

Submit a review at www.novusbio.com/reviews/destination/NBP1-77860



NBP1-77860

Smad1 [p Ser206] Antibody - BSA Free

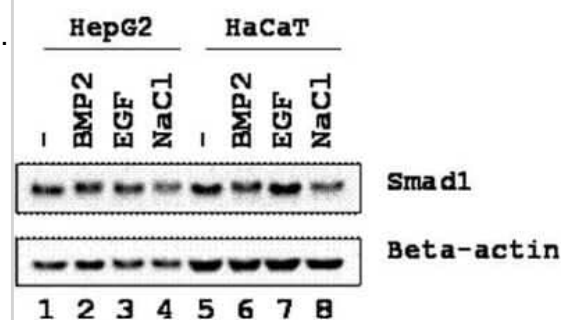
Product Information	
Unit Size	0.1 mg
Concentration	Please see the vial label for concentration. If unlisted please contact technical services.
Storage	Store at -20C short term. Aliquot and store at -80C long term. Avoid freeze-thaw cycles.
Clonality	Polyclonal
Preservative	0.01% Sodium Azide
Isotype	IgG
Purity	Immunogen affinity purified
Buffer	0.02 M Potassium Phosphate, 0.15 M Sodium Chloride, pH 7.2
Product Description	
Description	<p>This affinity-purified antibody is directed against the phosphorylated form of human SMAD1 protein at the [p Ser206] residue. The product was affinity purified from monospecific antiserum by immunoaffinity purification. Antiserum was first purified against the phosphorylated form of the immunizing peptide. The resultant affinity purified antibody was then cross adsorbed against the non-phosphorylated form of the immunizing peptide</p> <p>Store vial at -20C prior to opening. Aliquot contents and freeze at -20C or below for extended storage. Avoid cycles of freezing and thawing. Centrifuge product if not completely clear after standing at room temperature. This product is stable for several weeks at 4C as an undiluted liquid. Dilute only prior to immediate use.</p>
Host	Rabbit
Gene ID	4086
Gene Symbol	SMAD1
Species	Human
Reactivity Notes	A BLAST analysis was used to suggest 100% cross reactivity with Smad1 from human, Duckbill platypus, Drosophila, mouse, opossum, chimpanzee, bonobo, orangutan, gorilla, macaque, cattle, sheep, pig, rat, horse, salmon, chicken, and dog based on the sequence homology with the immunogen. Reactivity against homologues from other sources is not known.
Specificity/Sensitivity	This affinity-purified antibody is directed against the phosphorylated form of human Smad1 protein at the pS206 residue. The resultant affinity purified antibody was then cross adsorbed against the non-phosphorylated form of the immunizing peptide. Reactivity occurs against human Smad1 pS206 protein and the antibody is specific for the phosphorylated form of the protein. Reactivity with non-phosphorylated human Smad1 is minimal by ELISA and western blot. A BLAST analysis was used to suggest 100% cross reactivity with Smad1 from human, Duckbill platypus, Drosophila, mouse, opossum, chimpanzee, bonobo, orangutan, gorilla, macaque, cattle, sheep, pig, rat, horse, salmon, chicken, and dog based on the sequence homology with the immunogen. Reactivity against homologues from other sources is not known.
Immunogen	This affinity purified Smad1 [p Ser206] Antibody was prepared from whole rabbit serum produced by repeated immunizations with a phosphorylated synthetic peptide corresponding to the region of amino acids containing serine 206 of human Smad1 protein. (Uniprot: Q15797)

Product Application Details

Applications	Western Blot, ELISA, Immunoprecipitation
Recommended Dilutions	Western Blot 1:500, ELISA 1:25000-1:30000, Immunoprecipitation 2 ug
Application Notes	This affinity purified antibody has been tested for use in ELISA and by western blot. Specific conditions for reactivity should be optimized by the end user. Expect a band approximately 52 kDa in size corresponding to phosphorylated SMAD1 protein by western blotting in the appropriate stimulated tissue or cell lysate or extract. This antibody is specific for the phosphorylated pS206 of SMAD1. Stimulation of EGF, TGFbeta BMP2, and 0.5M NaCl are recommended for 1 hour. This antibody is useful in CHIP and CHIPSeq.

Images

Western Blot: Smad1 [p Ser206] Antibody [NBP1-77860] - This antibody was used at a 1:500 dilution in 1% BLOTTO and reacted for 1 hour at room temperature. Anti-beta actin staining was used as a loading control. The membrane was washed and reacted with a 1:3,000 dilution HRP-conjugated a-Rabbit IgG for 1 hour at room temperature. Detection was by ECL. Personal communication, Xin-Hua Feng, Baylor College of Medicine, Houston, TX





Novus Biologicals USA

10730 E. Briarwood Avenue
Centennial, CO 80112
USA
Phone: 303.730.1950
Toll Free: 1.888.506.6887
Fax: 303.730.1966
nb-customerservice@bio-techne.com

Bio-Techne Canada

21 Canmotor Ave
Toronto, ON M8Z 4E6
Canada
Phone: 905.827.6400
Toll Free: 855.668.8722
Fax: 905.827.6402
canada.inquires@bio-techne.com

Bio-Techne Ltd

19 Barton Lane
Abingdon Science Park
Abingdon, OX14 3NB, United Kingdom
Phone: (44) (0) 1235 529449
Free Phone: 0800 37 34 15
Fax: (44) (0) 1235 533420
info.EMEA@bio-techne.com

General Contact Information

www.novusbio.com
Technical Support: nb-technical@bio-techne.com
Orders: nb-customerservice@bio-techne.com
General: novus@novusbio.com

Products Related to NBP1-77860

HAF008	Goat anti-Rabbit IgG Secondary Antibody [HRP]
NB7160	Goat anti-Rabbit IgG (H+L) Secondary Antibody [HRP]
NBP2-24891	Rabbit IgG Isotype Control
H00004086-P01-10ug	Recombinant Human Smad1 GST (N-Term) Protein

Limitations

This product is for research use only and is not approved for use in humans or in clinical diagnosis. Primary Antibodies are guaranteed for 1 year from date of receipt.

For more information on our 100% guarantee, please visit www.novusbio.com/guarantee

Earn gift cards/discounts by submitting a review: www.novusbio.com/reviews/submit/NBP1-77860

Earn gift cards/discounts by submitting a publication using this product:
www.novusbio.com/publications

