

Product Datasheet

Endosialin/CD248/TEM1 Antibody - BSA Free NBP1-77310

Unit Size: 0.1 mg

Store at 4C.

www.novusbio.com



technical@novusbio.com

Publications: 2

Protocols, Publications, Related Products, Reviews, Research Tools and Images at:
www.novusbio.com/NBP1-77310

Updated 10/23/2025 v.20.1

Earn rewards for product
reviews and publications.

Submit a publication at www.novusbio.com/publications

Submit a review at www.novusbio.com/reviews/destination/NBP1-77310



NBP1-77310

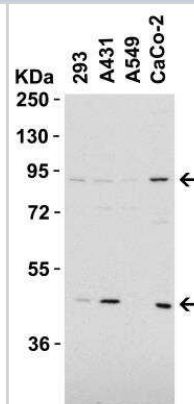
Endosialin/CD248/TEM1 Antibody - BSA Free

Product Information	
Unit Size	0.1 mg
Concentration	1 mg/ml
Storage	Store at 4C.
Clonality	Polyclonal
Preservative	0.02% Sodium Azide
Isotype	IgG
Purity	Peptide affinity purified
Buffer	PBS
Target Molecular Weight	46, 81 kDa
Product Description	
Description	Novus Biologicals Rabbit Endosialin/CD248/TEM1 Antibody - BSA Free (NBP1-77310) is a polyclonal antibody validated for use in IHC, WB, ELISA and ICC/IF. Anti-Endosialin/CD248/TEM1 Antibody: Cited in 2 publications. All Novus Biologicals antibodies are covered by our 100% guarantee.
Host	Rabbit
Gene ID	57124
Gene Symbol	CD248
Species	Human
Reactivity Notes	Immunogen displays the following percentage of sequence identity for non-tested species: Mouse (86%), Rat (86%)
Specificity/Sensitivity	Human TEM-1 has 2 isoforms, including isoform 1 (757aa, 81kD) and isoform 2 (433aa, 46kD). Mouse TEM-1 has one isoform (765aa, 82kD) and rat TEM-1 also has one isoform (764aa, 82kD). NBP1-77310 can detect all isoforms of human, mouse and rat.
Immunogen	Antibody was raised against a peptide corresponding to 14 amino acids near the carboxy terminus of human TEM-1. The immunogen is located within the last 50 amino acids of TEM-1. Amino Acid Sequence: GSKSPTEPMPPRGs
Product Application Details	
Applications	Western Blot, Immunohistochemistry-Paraffin, ELISA, Immunocytochemistry/Immunofluorescence, Immunohistochemistry
Recommended Dilutions	Western Blot 0.5-2 ug/ml, ELISA 1:100-1:2000, Immunohistochemistry 2.5 ug/ml, Immunocytochemistry/ Immunofluorescence 20 ug/ml, Immunohistochemistry-Paraffin 2.5 ug/ml
Application Notes	Use in Immunocytochemistry/immunofluorescence reported in scientific literature (PMID: 30285896).



Images

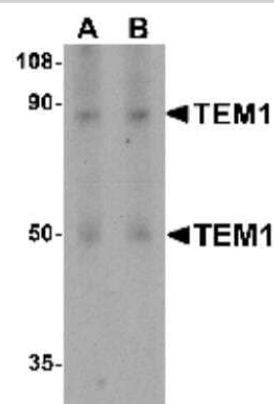
Western Blot: Endosialin/CD248/TEM1 Antibody [NBP1-77310] - Western Blot Validation in Human Cell Lines Loading: 15 ug of lysates per lane. Antibodies: TEM-1 4357, (2 ug/mL), 1h incubation at RT in 5% NFDm/TBST. Secondary: Goat anti-rabbit IgG HRP conjugate at 1:10000 dilution.



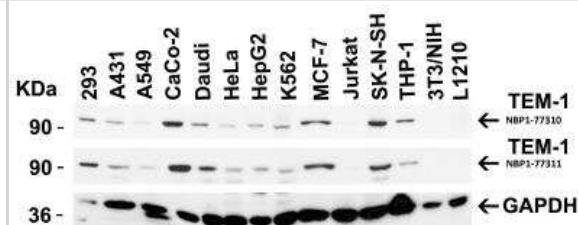
Immunohistochemistry: Endosialin/CD248/TEM1 Antibody [NBP1-77310] - Human Colon tissue with TEM1 antibody at 20 ug/mL.



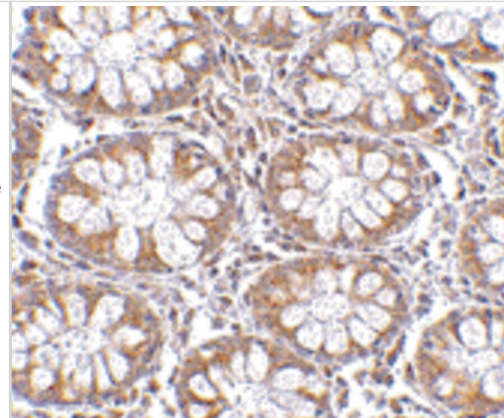
Western Blot: Endosialin/CD248/TEM1 Antibody [NBP1-77310] - Analysis of TEM1 in human colon tissue lysate with TEM1 antibody at (A) 0.5 and (B) 1 ug/mL.



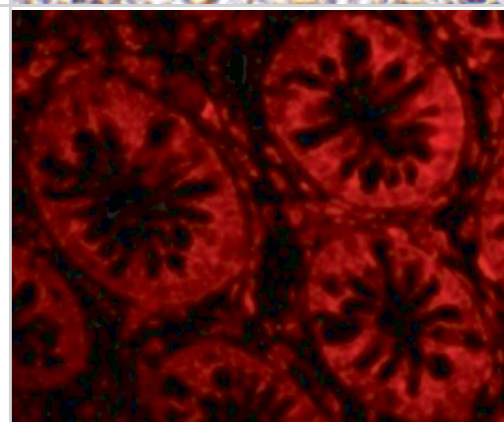
Western Blot: Endosialin/CD248/TEM1 Antibody [NBP1-77310] - Independent Antibody Validation (IAV) via Protein Expression Profile in Cell Lines Loading: 15 ug of lysates per lane. Antibodies: TEM-1 (NBP1-77310), (2 ug/mL), TEM-1 (NBP1-77311), (1ug/mL), and GAPDH (0.02 ug/mL), 1h incubation at RT in 5% NFDm/TBST. Secondary: Goat anti-rabbit IgG HRP conjugate at 1:10000 dilution.



Immunohistochemistry: Endosialin/CD248/TEM1 Antibody - BSA Free [NBP1-77310] - Validation of TEM-1 in Human Colon Tissue.
 Immunohistochemical analysis of paraffin-embedded Human Colon tissue using anti-TEM-1 antibody at 2.5 ug/ml. Tissue was fixed with formaldehyde and blocked with 10% serum for 1 h at RT; antigen retrieval was by heat mediation with a citrate buffer (pH6). Samples were incubated with primary antibody overnight at 4C. A goat anti-rabbit IgG H&L (HRP) at 1/250 was used as secondary. Counter stained with Hematoxylin.



Immunocytochemistry/ Immunofluorescence: Endosialin/CD248/TEM1 Antibody - BSA Free [NBP1-77310] - Figure 5 Immunofluorescence Validation of TEM-1 in Human Colon Tissue
 Immunofluorescent analysis of 4% paraformaldehyde-fixed Human Colon Tissue labeling TEM-1 with at 20 u/mL, followed by goat anti-rabbit IgG secondary antibody at 1/500 dilution (red).



Publications

Cipriani P, Ruscitti P, Di Cola I et al. Fibroblast expression of CD248 may contribute to exacerbation of microvascular damage during systemic sclerosis Rheumatology (Oxford, England) 2023-03-01 [PMID: 35916713] (Immunohistochemistry)

Di Benedetto P, Liakouli V, Ruscitti P et al. Blocking CD248 molecules in perivascular stromal cells of patients with systemic sclerosis strongly inhibits their differentiation toward myofibroblasts and proliferation: a new potential target for antifibrotic therapy. Arthritis Res. Ther. 2018-10-03 [PMID: 30285896] (ICC/IF, Human)



Novus Biologicals USA

10730 E. Briarwood Avenue
Centennial, CO 80112
USA
Phone: 303.730.1950
Toll Free: 1.888.506.6887
Fax: 303.730.1966
nb-customerservice@bio-techne.com

Bio-Techne Canada

21 Canmotor Ave
Toronto, ON M8Z 4E6
Canada
Phone: 905.827.6400
Toll Free: 855.668.8722
Fax: 905.827.6402
canada.inquires@bio-techne.com

Bio-Techne Ltd

19 Barton Lane
Abingdon Science Park
Abingdon, OX14 3NB, United Kingdom
Phone: (44) (0) 1235 529449
Free Phone: 0800 37 34 15
Fax: (44) (0) 1235 533420
info.EMEA@bio-techne.com

General Contact Information

www.novusbio.com
Technical Support: nb-technical@bio-techne.com
Orders: nb-customerservice@bio-techne.com
General: novus@novusbio.com

Products Related to NBP1-77310

NBP1-77310PEP	Endosialin/CD248/TEM1 Antibody Blocking Peptide
HAF008	Goat anti-Rabbit IgG Secondary Antibody [HRP]
NB7160	Goat anti-Rabbit IgG (H+L) Secondary Antibody [HRP]
NBP2-24891	Rabbit IgG Isotype Control

Limitations

This product is for research use only and is not approved for use in humans or in clinical diagnosis. Primary Antibodies are guaranteed for 1 year from date of receipt.

For more information on our 100% guarantee, please visit www.novusbio.com/guarantee

Earn gift cards/discounts by submitting a review: www.novusbio.com/reviews/submit/NBP1-77310

Earn gift cards/discounts by submitting a publication using this product:
www.novusbio.com/publications

