

# Product Datasheet

## ATF6 Antibody - BSA Free NBP1-77251

Unit Size: 0.1 mg

Store at 4C short term. Aliquot and store at -20C long term. Avoid freeze-thaw cycles.

[www.novusbio.com](http://www.novusbio.com)



[technical@novusbio.com](mailto:technical@novusbio.com)

### Publications: 2

Protocols, Publications, Related Products, Reviews, Research Tools and Images at:  
[www.novusbio.com/NBP1-77251](http://www.novusbio.com/NBP1-77251)

Updated 10/23/2024 v.20.1

Earn rewards for product  
reviews and publications.

Submit a publication at [www.novusbio.com/publications](http://www.novusbio.com/publications)

Submit a review at [www.novusbio.com/reviews/destination/NBP1-77251](http://www.novusbio.com/reviews/destination/NBP1-77251)



**NBP1-77251**

ATF6 Antibody - BSA Free

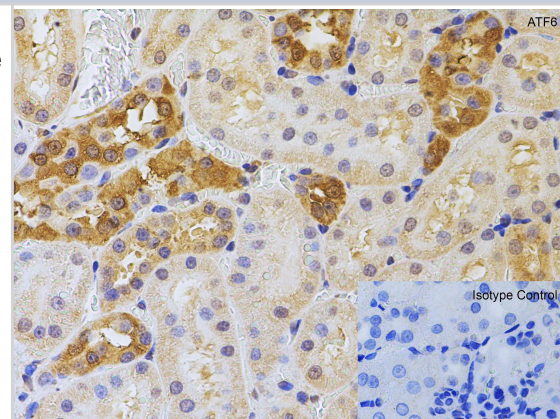
Product Information	
Unit Size	0.1 mg
Concentration	1 mg/ml
Storage	Store at 4C short term. Aliquot and store at -20C long term. Avoid freeze-thaw cycles.
Clonality	Polyclonal
Preservative	0.02% Sodium Azide
Isotype	IgG
Purity	Peptide affinity purified
Buffer	PBS

Product Description	
Host	Rabbit
Gene ID	22926
Gene Symbol	ATF6
Species	Human, Mouse, Rat
Immunogen	Antibody was raised against a 17 amino acid synthetic peptide from near the amino terminus of human ATF6. The immunogen is located within amino acids 30 - 80 of ATF6. Amino Acid Sequence: ELQLEAANETYENNFDN

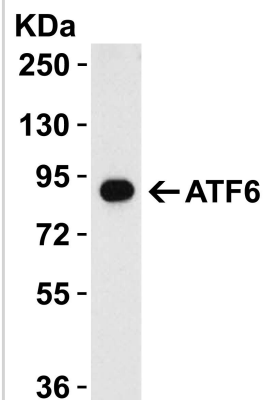
Product Application Details	
Applications	Western Blot, ELISA, Immunohistochemistry, Immunohistochemistry-Paraffin
Recommended Dilutions	Western Blot 0.5-1 ug/ml, ELISA, Immunohistochemistry 5 ug/mL, Immunohistochemistry-Paraffin
Application Notes	Use in IHC-P reported in scientific literature (PMID:33603856).

**Images**

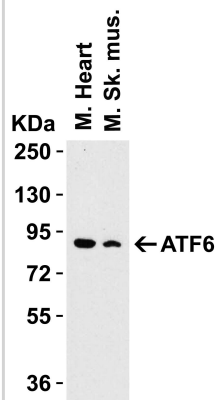
Immunohistochemical analysis of paraffin-embedded rat kidney tissue using anti-ATF6 antibody at 5 ug/ml. Tissue was fixed with formaldehyde and blocked with 10% serum for 1 h at RT; antigen retrieval was by heat mediation with a citrate buffer (pH6). Samples were incubated with primary antibody overnight at 4C. A goat anti-rabbit IgG H&L (HRP) at 1/250 was used as secondary. Counter stained with Hematoxylin.



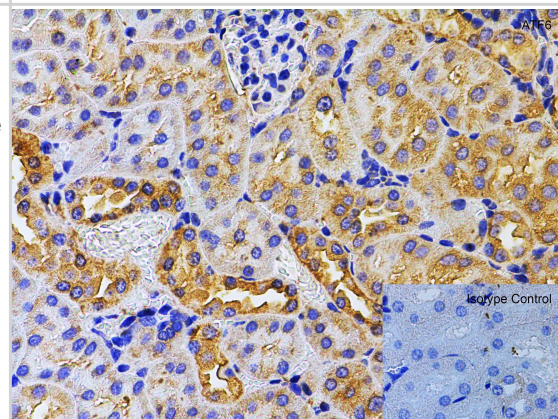
Loading: 15 ug of rat kidney lysate Antibodies: ATF6, 1 ug/mL , 1 h incubation at RT in 5% NFDM/TBST. Secondary: Goat Anti-Rabbit IgG HRP conjugate at 1:10000 dilution.



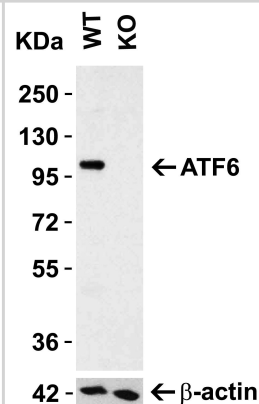
Loading: 15 ug of mouse tissue lysate Antibodies: ATF6, 1 ug/mL , 1 h incubation at RT in 5% NFDM/TBST. Secondary: Goat Anti-Rabbit IgG HRP conjugate at 1:10000 dilution.



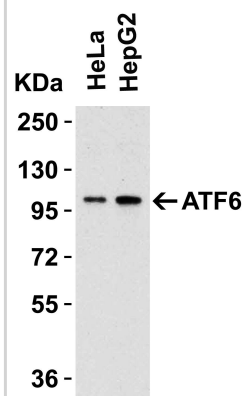
Immunohistochemical analysis of paraffin-embedded mouse kidney tissue using anti-ATF6 antibody at 5 ug/ml. Tissue was fixed with formaldehyde and blocked with 10% serum for 1 h at RT; antigen retrieval was by heat mediation with a citrate buffer (pH6). Samples were incubated with primary antibody overnight at 4C. A goat anti-rabbit IgG H&L (HRP) at 1/250 was used as secondary. Counter stained with Hematoxylin.



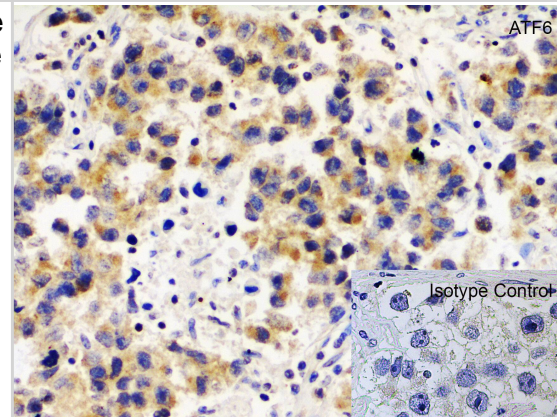
Loading: 15 ug of human HeLa cell lysate Antibodies ATF6, 0.5 ug/mL , 1 h incubation at RT in 5% NFDM/TBST. Secondary: Goat Anti-Rabbit IgG HRP conjugate at 1:10000 dilution.



Loading: 15 ug of human cell lysate Antibodies ATF6, 1 ug/mL , 1 h incubation at RT in 5% NFDM/TBST. Secondary: Goat Anti-Rabbit IgG HRP conjugate at 1:10000 dilution. Secondary: Goat Anti-Rabbit IgG HRP conjugate at 1:10000 dilution. Secondary: Goat Anti-Rabbit IgG HRP conjugate at 1:10000 dilution. Secondary: Goat Anti-Rabbit IgG HRP conjugate at 1:10000 dilution.



Immunohistochemical analysis of paraffin-embedded human testis tissue using anti-ATF6 antibody at 5 ug/ml. Tissue was fixed with formaldehyde and blocked with 10% serum for 1 h at RT; antigen retrieval was by heat mediation with a citrate buffer (pH6). Samples were incubated with primary antibody overnight at 4C. A goat anti-rabbit IgG H&L (HRP) at 1/250 was used as secondary. Counter stained with Hematoxylin.



## Publications

Obert D, Wolpert A, Grimm N, Korff S ER stress preconditioning ameliorates liver damage after hemorrhagic shock and reperfusion *Exp Ther Med* 2021-02-19 [PMID: 33603856] (IHC-P, Mouse)

Kesireddy VS, Chillappagari S, Ahuja S et al. Susceptibility of microtubule-associated protein 1 light chain 3beta (MAP1LC3B/ LC3B) knockout mice to lung injury and fibrosis *FASEB J.* 2019-08-20 [PMID: 31431059]



### **Novus Biologicals USA**

10730 E. Briarwood Avenue  
Centennial, CO 80112  
USA  
Phone: 303.730.1950  
Toll Free: 1.888.506.6887  
Fax: 303.730.1966  
nb-customerservice@bio-techne.com

### **Bio-Techne Canada**

21 Canmotor Ave  
Toronto, ON M8Z 4E6  
Canada  
Phone: 905.827.6400  
Toll Free: 855.668.8722  
Fax: 905.827.6402  
canada.inquires@bio-techne.com

### **Bio-Techne Ltd**

19 Barton Lane  
Abingdon Science Park  
Abingdon, OX14 3NB, United Kingdom  
Phone: (44) (0) 1235 529449  
Free Phone: 0800 37 34 15  
Fax: (44) (0) 1235 533420  
info.EMEA@bio-techne.com

### **General Contact Information**

www.novusbio.com  
Technical Support: nb-technical@bio-techne.com  
Orders: nb-customerservice@bio-techne.com  
General: novus@novusbio.com

### **Products Related to NBP1-77251**

---

NBP3-11854	HeLa DTT Treated / Untreated Cell Lysate
NBP1-77251PEP	ATF6 Antibody Blocking Peptide
HAF008	Goat anti-Rabbit IgG Secondary Antibody [HRP]
NB7160	Goat anti-Rabbit IgG (H+L) Secondary Antibody [HRP]
NBP2-24891	Rabbit IgG Isotype Control

---

### **Limitations**

This product is for research use only and is not approved for use in humans or in clinical diagnosis. Primary Antibodies are guaranteed for 1 year from date of receipt.

For more information on our 100% guarantee, please visit [www.novusbio.com/guarantee](http://www.novusbio.com/guarantee)

Earn gift cards/discounts by submitting a review: [www.novusbio.com/reviews/submit/NBP1-77251](http://www.novusbio.com/reviews/submit/NBP1-77251)

Earn gift cards/discounts by submitting a publication using this product:  
[www.novusbio.com/publications](http://www.novusbio.com/publications)

