

# Product Datasheet

## TRAF-6 Antibody Blocking Peptide NBP1-77230PEP

Unit Size: 0.05 mg

Store at -20C. Avoid freeze-thaw cycles.

[www.novusbio.com](http://www.novusbio.com)



[technical@novusbio.com](mailto:technical@novusbio.com)

Protocols, Publications, Related Products, Reviews, Research Tools and Images at:  
[www.novusbio.com/NBP1-77230PEP](http://www.novusbio.com/NBP1-77230PEP)

Updated 10/23/2024 v.20.1

Earn rewards for product  
reviews and publications.

Submit a publication at [www.novusbio.com/publications](http://www.novusbio.com/publications)

Submit a review at [www.novusbio.com/reviews/destination/NBP1-77230PEP](http://www.novusbio.com/reviews/destination/NBP1-77230PEP)



**NBP1-77230PEP****TRAF-6 Antibody Blocking Peptide**

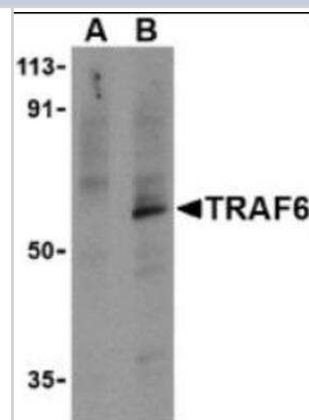
Product Information	
Unit Size	0.05 mg
Concentration	0.2 mg/ml
Storage	Store at -20C. Avoid freeze-thaw cycles.
Preservative	0.02% Sodium Azide
Purity	N/A
Buffer	PBS pH 7.2 (10 mM NaH <sub>2</sub> PO <sub>4</sub> , 10 mM Na <sub>2</sub> HPO <sub>4</sub> , 130 mM NaCl) containing 0.1% bovine serum albumin.

Product Description	
Description	A blocking peptide containing 14 amino acids near the carboxy terminus of human TRAF6.  <b>Source:</b> <i>Synthetic</i>  (Accession #: NP_004611)
Gene ID	7189
Gene Symbol	TRAF6
Species	Human

Product Application Details	
Applications	Antibody Competition
Recommended Dilutions	Antibody Competition
Application Notes	This peptide is useful as a blocking peptide for NBP1-77230. For further blocking peptide related protocol, click <a href="#">here</a> .

**Images**

Western Blot: TRAF6 Peptide [NBP1-77230PEP] - blocks the antibody activity completely in Western blot by incubating the peptide with equal volume of antibody for 30 min at 37C





### **Novus Biologicals USA**

10730 E. Briarwood Avenue  
Centennial, CO 80112  
USA  
Phone: 303.730.1950  
Toll Free: 1.888.506.6887  
Fax: 303.730.1966  
nb-customerservice@bio-techne.com

### **Bio-Techne Canada**

21 Canmotor Ave  
Toronto, ON M8Z 4E6  
Canada  
Phone: 905.827.6400  
Toll Free: 855.668.8722  
Fax: 905.827.6402  
canada.inquires@bio-techne.com

### **Bio-Techne Ltd**

19 Barton Lane  
Abingdon Science Park  
Abingdon, OX14 3NB, United Kingdom  
Phone: (44) (0) 1235 529449  
Free Phone: 0800 37 34 15  
Fax: (44) (0) 1235 533420  
info.EMEA@bio-techne.com

### **General Contact Information**

www.novusbio.com  
Technical Support: nb-technical@bio-techne.com  
Orders: nb-customerservice@bio-techne.com  
General: novus@novusbio.com

### **Products Related to NBP1-77230PEP**

---

NB100-56179PEP	TRAF-6 Antibody Blocking Peptide
210-TA-005	TNF-alpha [Unconjugated]
NBP2-26506	TRAF-6 Inhibitor Peptide Set
M6000B-1	IL-6 [HRP]

---

### **Limitations**

This product is for research use only and is not approved for use in humans or in clinical diagnosis. Peptides and proteins are guaranteed for 3 months from date of receipt.

For more information on our 100% guarantee, please visit [www.novusbio.com/guarantee](http://www.novusbio.com/guarantee)

Earn gift cards/discounts by submitting a review: [www.novusbio.com/reviews/submit/NBP1-77230PEP](http://www.novusbio.com/reviews/submit/NBP1-77230PEP)

Earn gift cards/discounts by submitting a publication using this product:  
[www.novusbio.com/publications](http://www.novusbio.com/publications)

