

Product Datasheet

Bim Antibody - BSA Free NBP1-77118

Unit Size: 0.1 mg

Store at 4C short term. Aliquot and store at -20C long term. Avoid freeze-thaw cycles.

www.novusbio.com



technical@novusbio.com

Protocols, Publications, Related Products, Reviews, Research Tools and Images at:
www.novusbio.com/NBP1-77118

Updated 10/23/2024 v.20.1

Earn rewards for product
reviews and publications.

Submit a publication at www.novusbio.com/publications

Submit a review at www.novusbio.com/reviews/destination/NBP1-77118



NBP1-77118

Bim Antibody - BSA Free

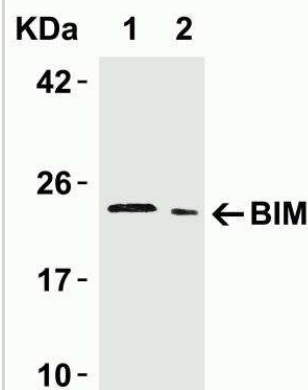
| Product Information | |
|-------------------------|--|
| Unit Size | 0.1 mg |
| Concentration | 1 mg/ml |
| Storage | Store at 4C short term. Aliquot and store at -20C long term. Avoid freeze-thaw cycles. |
| Clonality | Polyclonal |
| Preservative | 0.02% Sodium Azide |
| Isotype | IgG |
| Purity | Peptide affinity purified |
| Buffer | PBS |
| Target Molecular Weight | 22 kDa |

| Product Description | |
|-------------------------|---|
| Host | Rabbit |
| Gene ID | 10018 |
| Gene Symbol | BCL2L11 |
| Species | Human, Mouse |
| Specificity/Sensitivity | Human BIM has 3 isoforms, including isoform EL (198aa, 22kD), isoform L (138aa, 16kD) and isoform S (108aa, 13kD). Mouse BIM has 3 isoforms, including isoform EL (196aa, 22kD), isoform L (140aa, 16kD) and isoform S (110aa, 13kD). Rat BIM has 4 isoforms, including isoform BOD-L (196aa, 22kD), isoform L (140aa, 16kD) and isoform BOD-M (110aa, 13kD). NBP1-77118 only detects isoform EL. |
| Immunogen | Antibody was raised against a peptide corresponding to amino acids near the center of human Bim. The sequence is identical to that of mouse and rat. The immunogen is located within amino acids 80 - 130 of Bim. Amino Acid Sequence: SGYFSFDTRSPAPMS |

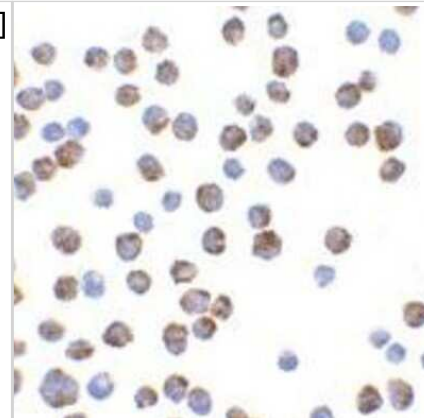
| Product Application Details | |
|-----------------------------|---|
| Applications | Western Blot, ELISA, Immunocytochemistry/ Immunofluorescence |
| Recommended Dilutions | Western Blot 5 ug/mL, ELISA 1:100-1:2000, Immunocytochemistry/ Immunofluorescence 10-20 ug/mL |

Images

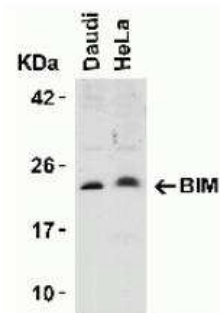
Western Blot: Bim Antibody [NBP1-77118] - Western Blot Validation in Human Tissue Loading: 15 ug of lysates per lane. Antibodies: BIM NBP1-77118, (5 ug/mL), 1h incubation at RT in 5% NFDN/TBST. Secondary: Goat anti-rabbit IgG HRP conjugate at 1:10000 dilution. Lane 1: Human urinary bladder Lane 2: Human pancreas



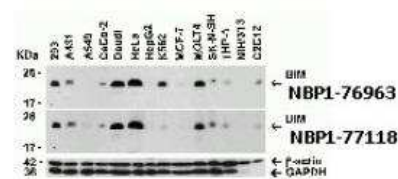
Immunocytochemistry/Immunofluorescence: Bim Antibody [NBP1-77118]
- K562 cells with Bim antibody at 10 ug/ml.



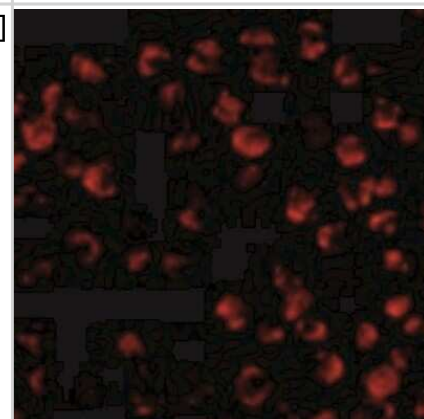
Western Blot: Bim Antibody [NBP1-77118] - Western Blot Validation in Human Cell Lines Loading: 15 ug of lysates per lane. Antibodies: BIM NBP1-77118, (5 ug/mL), 1h incubation at RT in 5% NFDN/TBST. Secondary: Goat anti-rabbit IgG HRP conjugate at 1:10000 dilution.



Western Blot: Bim Antibody [NBP1-77118] - IAV via Protein Expression Profile in Cell Lines. Loading: 15 ug of lysates per lane. Antibodies: BIM NBP1-76963 (0.5 ug/ml), BIM NBP1-77118 (5 ug/ml), beta-actin (1 ug/ml) and GAPDH (0.02 ug/ml), 1h incubation at RT in 5% NFDN/TBST. Secondary: Goat anti-rabbit IgG HRP conjugate at 1:10000 dilution.



Immunocytochemistry/Immunofluorescence: Bim Antibody [NBP1-77118]
- K562 cells at 20 ug/mL.





Novus Biologicals USA

10730 E. Briarwood Avenue
Centennial, CO 80112
USA
Phone: 303.730.1950
Toll Free: 1.888.506.6887
Fax: 303.730.1966
nb-customerservice@bio-techne.com

Bio-Techne Canada

21 Canmotor Ave
Toronto, ON M8Z 4E6
Canada
Phone: 905.827.6400
Toll Free: 855.668.8722
Fax: 905.827.6402
canada.inquires@bio-techne.com

Bio-Techne Ltd

19 Barton Lane
Abingdon Science Park
Abingdon, OX14 3NB, United Kingdom
Phone: (44) (0) 1235 529449
Free Phone: 0800 37 34 15
Fax: (44) (0) 1235 533420
info.EMEA@bio-techne.com

General Contact Information

www.novusbio.com
Technical Support: nb-technical@bio-techne.com
Orders: nb-customerservice@bio-techne.com
General: novus@novusbio.com

Products Related to NBP1-77118

| | |
|---------------|---|
| NBP1-77118PEP | Bim Antibody Blocking Peptide |
| HAF008 | Goat anti-Rabbit IgG Secondary Antibody [HRP] |
| NB7160 | Goat anti-Rabbit IgG (H+L) Secondary Antibody [HRP] |
| NBP2-24891 | Rabbit IgG Isotype Control |

Limitations

This product is for research use only and is not approved for use in humans or in clinical diagnosis. Primary Antibodies are guaranteed for 1 year from date of receipt.

For more information on our 100% guarantee, please visit www.novusbio.com/guarantee

Earn gift cards/discounts by submitting a review: www.novusbio.com/reviews/submit/NBP1-77118

Earn gift cards/discounts by submitting a publication using this product:
www.novusbio.com/publications

