

Product Datasheet

Claudin-1 Antibody - BSA Free NBP1-77036

Unit Size: 0.1 mg

Store at 4C short term. Aliquot and store at -20C long term. Avoid freeze-thaw cycles.

www.novusbio.com



technical@novusbio.com

Reviews: 2 Publications: 12

Protocols, Publications, Related Products, Reviews, Research Tools and Images at:
www.novusbio.com/NBP1-77036

Updated 10/23/2024 v.20.1

Earn rewards for product
reviews and publications.

Submit a publication at www.novusbio.com/publications

Submit a review at www.novusbio.com/reviews/destination/NBP1-77036



NBP1-77036

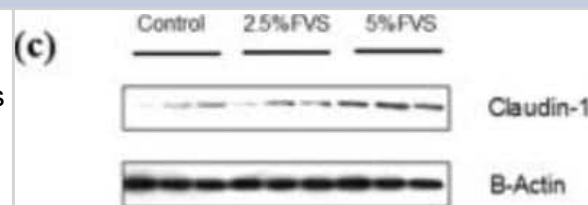
Claudin-1 Antibody - BSA Free

Product Information	
Unit Size	0.1 mg
Concentration	1 mg/ml
Storage	Store at 4C short term. Aliquot and store at -20C long term. Avoid freeze-thaw cycles.
Clonality	Polyclonal
Preservative	0.02% Sodium Azide
Isotype	IgG
Purity	Peptide affinity purified
Buffer	PBS
Target Molecular Weight	23 kDa
Product Description	
Host	Rabbit
Gene ID	9076
Gene Symbol	CLDN1
Species	Human, Mouse, Rat, Porcine, Canine
Reactivity Notes	Porcine reactivity per customer review. Mouse reactivity reported in (PMID: 33392105), Canine reactivity reported in (PMID: 32419902).
Specificity/Sensitivity	Human Claudin-1 has one isoform (211aa, 23kD). Mouse Claudin-1 has one isoform (211aa, 23kD) and Rat Claudin-1 also has one isoform (211aa, 23kD). NBP1-77036 can detect human, mouse and rat.
Immunogen	Antibody was raised against a peptide corresponding to 20 amino acids near the carboxy terminus of human Claudin-1. The immunogen is located within the last 50 amino acids of Claudin-1. Amino Acid Sequence: PRKTTSYTPRPYPKPAPS
Product Application Details	
Applications	Western Blot, ELISA, Immunocytochemistry/ Immunofluorescence, Immunohistochemistry
Recommended Dilutions	Western Blot 1-2 ug/ml, ELISA 1:100-1:2000, Immunohistochemistry, Immunocytochemistry/ Immunofluorescence 5-20 ug/mL
Application Notes	Use in ICC/IF reported in multiple pieces of scientific literature. Use in IHC reported in scientific literature (PMID:32067099).

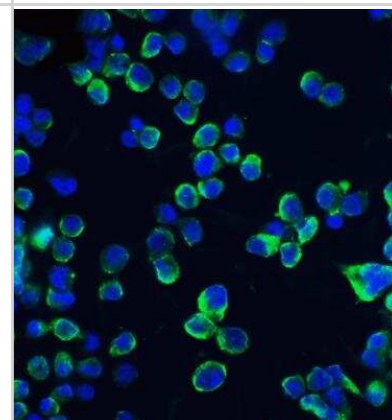


Images

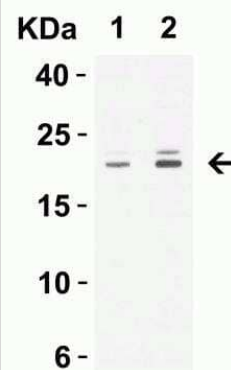
Western Blot: Claudin-1 Antibody - BSA Free [NBP1-77036] - Claudin-1 Antibody [NBP1-77036] - Effects of dietary Flammulina velutipes stem waste (FVS) inclusion on the relative expression of tight junction proteins in jejunum of growing pigs. The relative expression of claudin-1 in jejunum of growing pigs fed control and 2.5% or 5% FVS diets. Values are means (3 pigs per treatment) with standard errors represented by vertical bars. *P < 0.05, **P < 0.01 Image collected and cropped by CiteAb from the following publication (<https://jasbsci.biomedcentral.com/articles/10.1186/s40104-020-00449-y>) licensed under a CC-BY license.



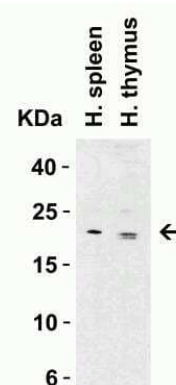
Immunocytochemistry/Immunofluorescence: Claudin-1 Antibody - BSA Free [NBP1-77036] - Claudin-1 Antibody [NBP1-77036] - Validation of CLDN1 in HepG2 Cells. Analysis of 4% paraformaldehyde-fixed HepG2 cells labeling CLDN1 with at 20 ug/mL, followed by goat anti-rabbit IgG secondary antibody at 1/500 dilution (green) and DAPI staining (blue).



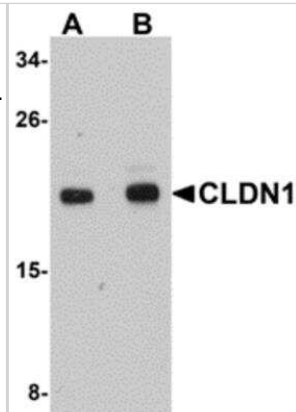
Western Blot: Claudin-1 Antibody - BSA Free [NBP1-77036] - Claudin-1 Antibody [NBP1-77036] - Validation in Human Tissue Lysates Loading: 15 ug of lysates per lane. Antibodies: CLDN1, (1 ug/mL), 1h incubation at RT in 5% NFDN/TBST. Secondary: Goat anti-rabbit IgG HRP conjugate at 1:10000 dilution.



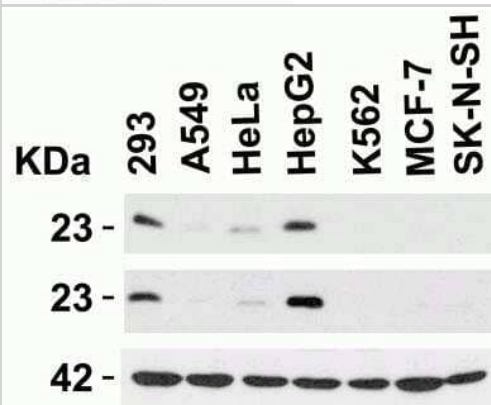
Western Blot: Claudin-1 Antibody - BSA Free [NBP1-77036] - Claudin-1 Antibody [NBP1-77036] - Validation in Human Tissue Lysates Loading: 15 ug of lysates per lane. Antibodies: CLDN1, (1 ug/mL), 1h incubation at RT in 5% NFDN/TBST. Secondary: Goat anti-rabbit IgG HRP conjugate at 1:10000 dilution.



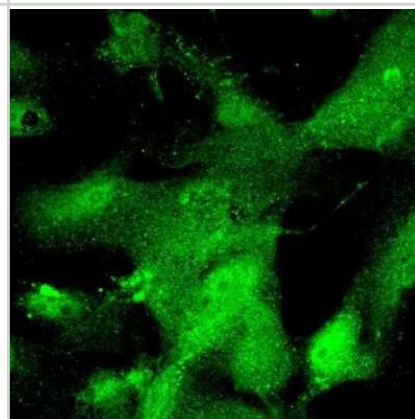
Western Blot: Claudin-1 Antibody - BSA Free [NBP1-77036] - Claudin-1 Antibody [NBP1-77036] - Validation in Human HepG2 Cell Lysate
Loading: 15 ug of lysates per lane. Antibodies: CLDN1, 5187 (A: 1 ug/mL and B: 2 ug/mL), 1h incubation at RT in 5% NFDN/TBST. Secondary: Goat anti-rabbit IgG HRP conjugate at 1:10000 dilution.



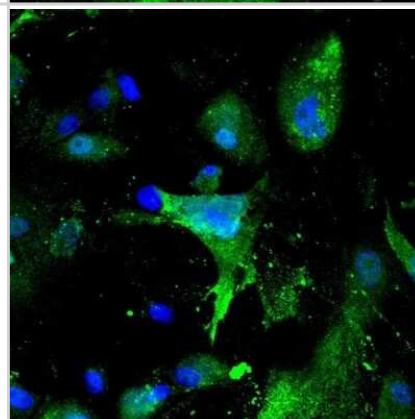
Western Blot: Claudin-1 Antibody - BSA Free [NBP1-77036] - Claudin-1 Antibody [NBP1-77036] - Independent Antibody Validation (IAV) via Protein Expression Profile in Human Cell Lines. Loading: 15 ug of lysates per lane. Antibodies: CLDN1, NBP1-77036 (1 ug/mL), CLDN1, (2 ug/mL), and beta-actin (1 ug/mL), 1h incubation at RT in 5% NFDN/TBST. Secondary: Goat anti-rabbit IgG HRP conjugate at 1:10000 dilution.



Immunocytochemistry/Immunofluorescence: Claudin-1 Antibody - BSA Free [NBP1-77036] - Claudin-1 Antibody [NBP1-77036] - Claudin-1 labeled pig cultured cornea cells visualized with Alexa488. This image was submitted via customer Review.



Immunocytochemistry/Immunofluorescence: Claudin-1 Antibody - BSA Free [NBP1-77036] - Claudin-1 Antibody [NBP1-77036] - Claudin-1 labeled pig Sc cells visualized with Alexa488. This image was submitted via customer Review.



Publications

Enrico Gugliandolo, Gianluca Antonio Franco, Ylenia Marino, Alessio Filippo Peritore, Daniela Impellizzeri, Marika Cordaro, Rosalba Siracusa, Roberta Fusco, Ramona D'Amico, Francesco Macrì, Rosanna Di Paola, Salvatore Cuzzocrea, Rosalia Crupi Uroprotective and pain-relieving effect of dietary supplementation with micronized palmitoyl-glucosamine and hesperidin in a chronic model of cyclophosphamide-induced cystitis *Frontiers in Veterinary Science* 2024-01-04 [PMID: 38249555]

Shinde, T;Perera, AP;Vemuri, R;Gondalia, SV;Karpe, AV;Beale, DJ;Shastri, S;Southam, B;Eri, R;Stanley, R; Synbiotic Supplementation Containing Whole Plant Sugar Cane Fibre and Probiotic Spores Potentiates Protective Synergistic Effects in Mouse Model of IBD *Nutrients* 2019-04-11 [PMID: 30979002]

Lv Q, Xu D, Zhang X et al. Association of Hyperuricemia With Immune Disorders and Intestinal Barrier Dysfunction *Frontiers in Physiology* 2020-11-27 [PMID: 33329010] (Western Blot)

Han B, Lv X, Liu G et al. Gut microbiota-related bile acid metabolism-FXR/TGR5 axis impacts the response to anti-477-integrin therapy in humanized mice with colitis *Gut microbes* 2023-07-11 [PMID: 37431863] (WB)

Shinde T, Perera AP, Vemuri R et al. Synbiotic supplementation with prebiotic green banana resistant starch and probiotic *Bacillus coagulans* spores ameliorates gut inflammation in mouse model of inflammatory bowel diseases *Eur J Nutr* 2020-02-19 [PMID: 32419902] (WB, Human, Canine)

Shi Y, Li R, Yang J et al. No tight junctions in tight junction protein-1 expressing HeLa and fibroblast cells *Int J Physiol Pathophysiol Pharmacol* 2020-05-19 [PMID: 32067099] (IF/IHC, IHC-P, Mouse)

Lee PC, Hsieh YC, Huo TI et al. Active Vitamin D3 Treatment Attenuated Bacterial Translocation via Improving Intestinal Barriers in Cirrhotic Rats *Molecular nutrition & food research* 2020-11-30 [PMID: 33258263] (WB, Rat)

Ledwaba S, Costa D, Bolick D et al. Enteropathogenic *Escherichia coli* (EPEC) Infection Induces Diarrhea, Intestinal Damage, Metabolic Alterations and Increased Intestinal Permeability in a Murine Model *bioRxiv* 2020-06-13 [PMID: 33392105] (WB, Mouse)

Liu X, Zhang B, Liu H et al. Determination of the available energy values and amino acid digestibility of *Flammulina velutipes* stem waste and its effects on carcass trait and meat quality fed to growing-finishing pigs *J Anim Sci Biotechnol* 2020-05-04 [PMID: 32391146] (WB)

Cheng CW, Yu JC, Hsieh YH et al. Increased Cellular Levels of MicroRNA-9 and MicroRNA-221 Correlate with Cancer Stemness and Predict Poor Outcome in Human Breast Cancer Cell. *Physiol. Biochem.* 2018-08-15 [PMID: 30110679] (WB, Human)

Bulldan A, Dietze R, Shihan M, Scheiner-Bobis G. Non-classical testosterone signaling mediated through ZIP9 stimulates claudin expression and tight junction formation in Sertoli cells. *Cell. Signal.* 2016-05-06 [PMID: 27164415] (ICC/IF, WB, Rat)

Dietze R, Shihan M, Stämmler A et al. Cardiotonic steroid ouabain stimulates expression of blood-testis barrier proteins claudin-1 and -11 and formation of tight junctions in Sertoli cells *Mol. Cell. Endocrinol.* 2015-02-07 [PMID: 25666991] (ICC/IF, Rat)



Novus Biologicals USA

10730 E. Briarwood Avenue
Centennial, CO 80112
USA
Phone: 303.730.1950
Toll Free: 1.888.506.6887
Fax: 303.730.1966
nb-customerservice@bio-techne.com

Bio-Techne Canada

21 Canmotor Ave
Toronto, ON M8Z 4E6
Canada
Phone: 905.827.6400
Toll Free: 855.668.8722
Fax: 905.827.6402
canada.inquires@bio-techne.com

Bio-Techne Ltd

19 Barton Lane
Abingdon Science Park
Abingdon, OX14 3NB, United Kingdom
Phone: (44) (0) 1235 529449
Free Phone: 0800 37 34 15
Fax: (44) (0) 1235 533420
info.EMEA@bio-techne.com

General Contact Information

www.novusbio.com
Technical Support: nb-technical@bio-techne.com
Orders: nb-customerservice@bio-techne.com
General: novus@novusbio.com

Products Related to NBP1-77036

NBP1-77036PEP	Claudin-1 Antibody Blocking Peptide
HAF008	Goat anti-Rabbit IgG Secondary Antibody [HRP]
NB7160	Goat anti-Rabbit IgG (H+L) Secondary Antibody [HRP]
NBP2-24891	Rabbit IgG Isotype Control

Limitations

This product is for research use only and is not approved for use in humans or in clinical diagnosis. Primary Antibodies are guaranteed for 1 year from date of receipt.

For more information on our 100% guarantee, please visit www.novusbio.com/guarantee

Earn gift cards/discounts by submitting a review: www.novusbio.com/reviews/submit/NBP1-77036

Earn gift cards/discounts by submitting a publication using this product:
www.novusbio.com/publications

