

Product Datasheet

CX3CR1 Antibody Blocking Peptide NBP1-76949PEP-0.1mg

Unit Size: 0.1 mg

Store at -80C. Avoid freeze-thaw cycles.

www.novusbio.com



technical@novusbio.com

Protocols, Publications, Related Products, Reviews, Research Tools and Images at:
www.novusbio.com/NBP1-76949PEP

Updated 10/23/2024 v.20.1

Earn rewards for product
reviews and publications.

Submit a publication at www.novusbio.com/publications

Submit a review at www.novusbio.com/reviews/destination/NBP1-76949PEP



NBP1-76949PEP-0.1mg**CX3CR1 Antibody Blocking Peptide**

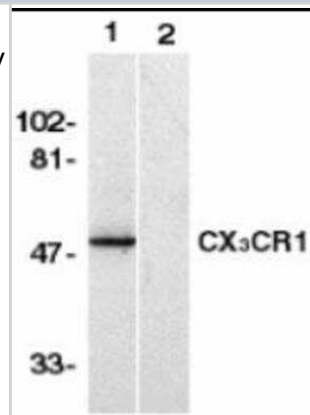
| Product Information | |
|---------------------|---|
| Unit Size | 0.1 mg |
| Concentration | 1 mg/ml |
| Storage | Store at -80C. Avoid freeze-thaw cycles. |
| Preservative | No Preservative |
| Buffer | Peptide dissolved in dH2O. Contains no BSA. |

| Product Description | |
|-------------------------|---|
| Description | A blocking peptide containing 20 amino amino terminus of human CX3CR1. Source: <i>Synthetic</i> (Accession #: NP_001328) |
| Gene ID | 1524 |
| Gene Symbol | CX3CR1 |
| Species | Human |
| Specificity/Sensitivity | This peptide is specific for NBP1-76949 only. |

| Product Application Details | |
|-----------------------------|--|
| Applications | Antibody Competition |
| Recommended Dilutions | Antibody Competition |
| Application Notes | This peptide is useful as a blocking peptide for NBP1-76949. For further blocking peptide related protocol, click here . |

Images

Western Blot: CX3CR1 Peptide [NBP1-76949PEP] - Incubating the peptide with equal volume of CX3CR1 antibody for 30 min at 37C usually completely blocks the antibody activity in Western blotting.





Novus Biologicals USA

10730 E. Briarwood Avenue
Centennial, CO 80112
USA
Phone: 303.730.1950
Toll Free: 1.888.506.6887
Fax: 303.730.1966
nb-customerservice@bio-techne.com

Bio-Techne Canada

21 Canmotor Ave
Toronto, ON M8Z 4E6
Canada
Phone: 905.827.6400
Toll Free: 855.668.8722
Fax: 905.827.6402
canada.inquires@bio-techne.com

Bio-Techne Ltd

19 Barton Lane
Abingdon Science Park
Abingdon, OX14 3NB, United Kingdom
Phone: (44) (0) 1235 529449
Free Phone: 0800 37 34 15
Fax: (44) (0) 1235 533420
info.EMEA@bio-techne.com

General Contact Information

www.novusbio.com
Technical Support: nb-technical@bio-techne.com
Orders: nb-customerservice@bio-techne.com
General: novus@novusbio.com

Products Related to NBP1-76949PEP-0.1mg

| | |
|--------------------|---|
| H00001524-Q01-10ug | Recombinant Human CX3CR1 GST (N-Term) Protein |
| 210-TA-005 | TNF-alpha [Unconjugated] |
| AF5825 | CX3CR1 Antibody [Unconjugated] |
| M6000B-1 | IL-6 [HRP] |

Limitations

This product is for research use only and is not approved for use in humans or in clinical diagnosis. Peptides and proteins are guaranteed for 3 months from date of receipt.

For more information on our 100% guarantee, please visit www.novusbio.com/guarantee

Earn gift cards/discounts by submitting a review: www.novusbio.com/reviews/submit/NBP1-76949PEP

Earn gift cards/discounts by submitting a publication using this product:
www.novusbio.com/publications

