

Product Datasheet

BANF1 Antibody - BSA Free

NBP1-76750

Unit Size: 0.1 mg

Store at 4C short term. Aliquot and store at -20C long term. Avoid freeze-thaw cycles.

www.novusbio.com



technical@novusbio.com

Protocols, Publications, Related Products, Reviews, Research Tools and Images at:
www.novusbio.com/NBP1-76750

Updated 9/9/2025 v.20.1

Earn rewards for product
reviews and publications.

Submit a publication at www.novusbio.com/publications

Submit a review at www.novusbio.com/reviews/destination/NBP1-76750



NBP1-76750

BANF1 Antibody - BSA Free

Product Information

Unit Size	0.1 mg
Concentration	1 mg/ml
Storage	Store at 4C short term. Aliquot and store at -20C long term. Avoid freeze-thaw cycles.
Clonality	Polyclonal
Preservative	0.02% Sodium Azide
Isotype	IgG
Purity	Peptide affinity purified
Buffer	PBS
Target Molecular Weight	12 kDa

Product Description

Description	Novus Biologicals Rabbit BANF1 Antibody - BSA Free (NBP1-76750) is a polyclonal antibody validated for use in WB, ELISA and ICC/IF. All Novus Biologicals antibodies are covered by our 100% guarantee.
Host	Rabbit
Gene ID	8815
Gene Symbol	BANF1
Species	Human
Specificity/Sensitivity	Human BANF1 has one isoform (89aa, 10kD). Mouse BANF1 has one isoform (89aa, 10kD) and Rat BANF1 also has one isoform (89aa, 10kD). NBP1-76750 can detect human, mouse and rat.
Immunogen	Antibody was raised against a peptide corresponding to 15 amino acids near the carboxy terminus of human BANF1. The immunogen is located within the last 50 amino acids of BANF1. Amino Acid Sequence: LKKDEDLFREWLKDT

Product Application Details

Applications	Western Blot, ELISA, Immunocytochemistry/ Immunofluorescence, Immunofluorescence
Recommended Dilutions	Western Blot 0.5-2 ug/mL, ELISA 1:100-1:2000, Immunocytochemistry/ Immunofluorescence 20 ug/ml, Immunofluorescence 20 ug/mL

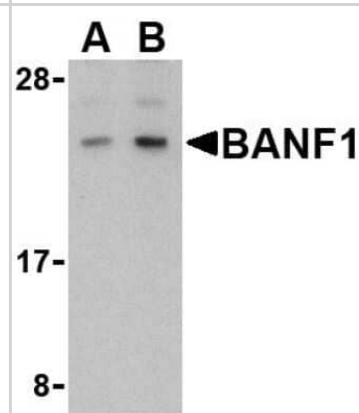


Images

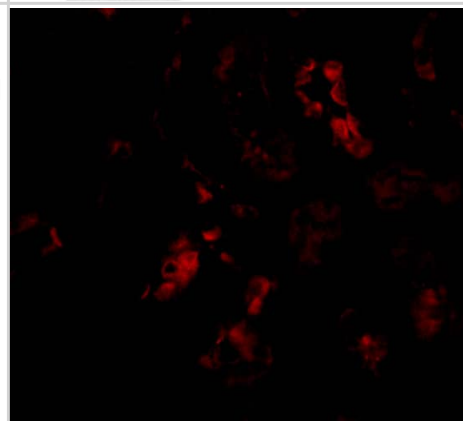
Western Blot: BANF1 Antibody [NBP1-76750] - Independent Antibody Validation via Protein Expression in Human Lines. Loading: 15 ug of lysates per lane. Antibodies: BANF1 [NBP1-76750] (2 ug/ml), BANF1 [NBP1-76751] (2 ug/ml) and beta-actin (1.5 ug/ml). 1h incubation at RT in 5% NFDM/TBST. Secondary: Goat anti-rabbit IgG HRP conjugate at 1:10000 dilution.



Western Blot: BANF1 Antibody [NBP1-76750] - Human kidney tissue lysate with BANF1 antibody at (A) 0.5 and (B) 1 ug/ml.



Immunocytochemistry/ Immunofluorescence: BANF1 Antibody - BSA Free [NBP1-76750] -Validation in Human Kidney Tissue Lysate. Loading: 15 ug of lysates per lane. Antibodies: BANF1 (A: 0.5 ug/mL and B: 1 ug/mL), 1h incubation at RT in 5% NFDM/TBST. Secondary: Goat anti-rabbit IgG HRP conjugate at 1:10000 dilution.





Novus Biologicals USA

10730 E. Briarwood Avenue
Centennial, CO 80112
USA
Phone: 303.730.1950
Toll Free: 1.888.506.6887
Fax: 303.730.1966
nb-customerservice@bio-techne.com

Bio-Techne Canada

21 Canmotor Ave
Toronto, ON M8Z 4E6
Canada
Phone: 905.827.6400
Toll Free: 855.668.8722
Fax: 905.827.6402
canada.inquires@bio-techne.com

Bio-Techne Ltd

19 Barton Lane
Abingdon Science Park
Abingdon, OX14 3NB, United Kingdom
Phone: (44) (0) 1235 529449
Free Phone: 0800 37 34 15
Fax: (44) (0) 1235 533420
info.EMEA@bio-techne.com

General Contact Information

www.novusbio.com
Technical Support: nb-technical@bio-techne.com
Orders: nb-customerservice@bio-techne.com
General: novus@novusbio.com

Products Related to NBP1-76750

NBP1-76750PEP	BANF1 Antibody Blocking Peptide
HAF008	Goat anti-Rabbit IgG Secondary Antibody [HRP]
NB7160	Goat anti-Rabbit IgG (H+L) Secondary Antibody [HRP]
NBP2-24891	Rabbit IgG Isotype Control

Limitations

This product is for research use only and is not approved for use in humans or in clinical diagnosis. Primary Antibodies are guaranteed for 1 year from date of receipt.

For more information on our 100% guarantee, please visit www.novusbio.com/guarantee

Earn gift cards/discounts by submitting a review: www.novusbio.com/reviews/submit/NBP1-76750

Earn gift cards/discounts by submitting a publication using this product:
www.novusbio.com/publications

