

# Product Datasheet

## Serine Palmitoyltransferase 2 Antibody - BSA Free NBP1-76573

Unit Size: 0.1 mg

Store at 4C short term. Aliquot and store at -20C long term. Avoid freeze-thaw cycles.

[www.novusbio.com](http://www.novusbio.com)



[technical@novusbio.com](mailto:technical@novusbio.com)

Protocols, Publications, Related Products, Reviews, Research Tools and Images at:  
[www.novusbio.com/NBP1-76573](http://www.novusbio.com/NBP1-76573)

Updated 10/23/2024 v.20.1

Earn rewards for product  
reviews and publications.

Submit a publication at [www.novusbio.com/publications](http://www.novusbio.com/publications)

Submit a review at [www.novusbio.com/reviews/destination/NBP1-76573](http://www.novusbio.com/reviews/destination/NBP1-76573)

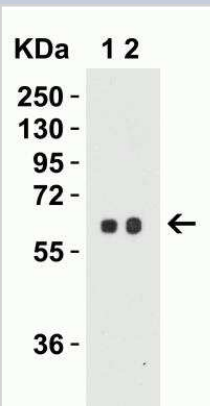


**NBP1-76573****Serine Palmitoyltransferase 2 Antibody - BSA Free**

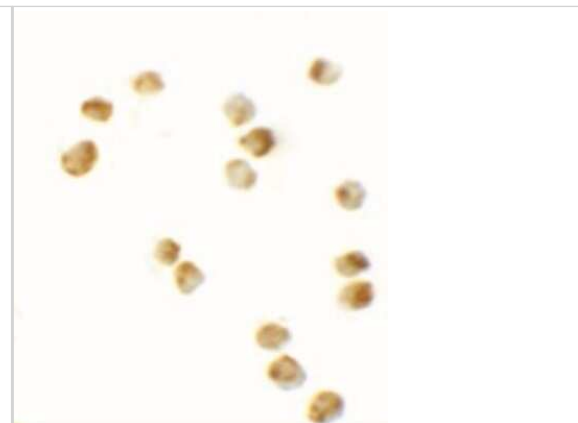
Product Information	
Unit Size	0.1 mg
Concentration	1 mg/ml
Storage	Store at 4C short term. Aliquot and store at -20C long term. Avoid freeze-thaw cycles.
Clonality	Polyclonal
Preservative	0.02% Sodium Azide
Isotype	IgG
Purity	Peptide affinity purified
Buffer	PBS
Target Molecular Weight	63 kDa
Product Description	
Host	Rabbit
Gene ID	9517
Gene Symbol	SPTLC2
Species	Human, Mouse
Specificity/Sensitivity	Serine Palmitoyltransferase 2 antibody is predicted to not cross-react with SPT1. Human Serine Palmitoyltransferase 2 has one isoform (562aa, 63kD). Mouse Serine Palmitoyltransferase 2 has one isoform (560aa, 63kD) and Rat Serine Palmitoyltransferase 2 also has one isoform (560aa, 63kD). NBP1-76573 can detect human, mouse and rat.
Immunogen	Antibody was raised against a peptide corresponding to 15 amino acids near the carboxy terminus of human Serine Palmitoyltransferase 2. The immunogen is located within the last 50 amino acids of Serine Palmitoyltransferase 2. Amino Acid Sequence: LDRPFDETTYEETED
Product Application Details	
Applications	Western Blot, ELISA, Immunocytochemistry/ Immunofluorescence, Immunocytochemistry, Immunofluorescence
Recommended Dilutions	Western Blot 0.5-1 ug/mL, ELISA 1:100-1:2000, Immunocytochemistry/ Immunofluorescence 10-20 ug/ml, Immunofluorescence 20 ug/mL, Immunocytochemistry 10 ug/mL

**Images**

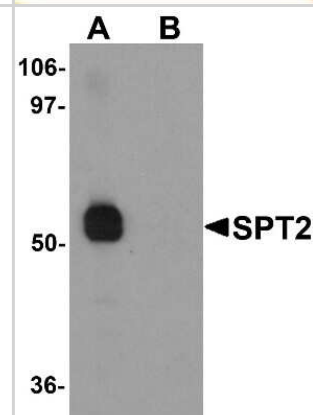
Western Blot: Serine Palmitoyltransferase 2 Antibody [NBP1-76573] - Western Blot Validation in Mouse 3T3/NIH Cell Lysate. Loading: 15 ug of lysates per lane. Antibodies: Serine Palmitoyltransferase 2, NBP1-76573 (Lane 1: 0.5 ug/mL and Lane 2: 1 ug/mL), 1h incubation at RT in 5% NFDN/TBST. Secondary: Goat anti-rabbit IgG HRP conjugate at 1:10000 dilution.



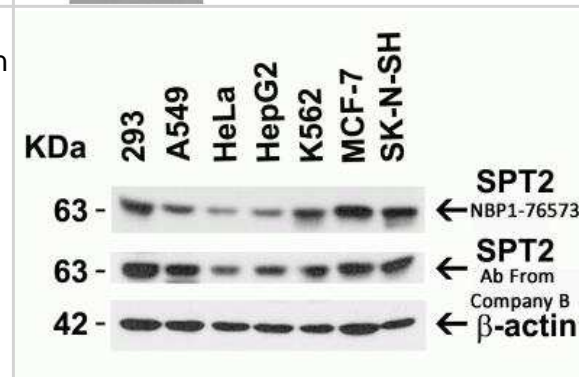
Immunocytochemistry/Immunofluorescence: Serine Palmitoyltransferase 2 Antibody [NBP1-76573] - Immunocytochemistry of SPT2 in 3T3 cells with SPT2 antibody at 10 ug/mL.



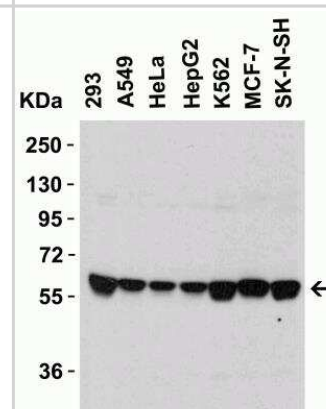
Western Blot: Serine Palmitoyltransferase 2 Antibody [NBP1-76573] - 3T3 cell lysate with Serine Palmitoyltransferase 2 antibody at 1 ug/mL in (A) the absence and (B) the presence of blocking peptide.



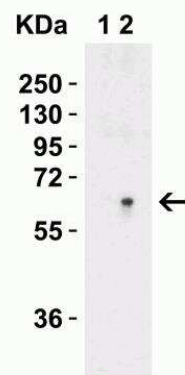
Western Blot: Serine Palmitoyltransferase 2 Antibody [NBP1-76573] - Independent Antibody Validation via Protein Expression Profile in Human Cell Lines. Loading: 15 ug of lysates per lane. Antibodies: Serine Palmitoyltransferase 2, NBP1-76573 (1 ug/ml), Serine Palmitoyltransferase 2 from Company B (1 ug/ml), and beta-actin (1 ug/ml), 1h incubation at RT in 5% NFDN/TBST. Secondary: Goat anti-rabbit IgG HRP conjugate at 1:10000 dilution.



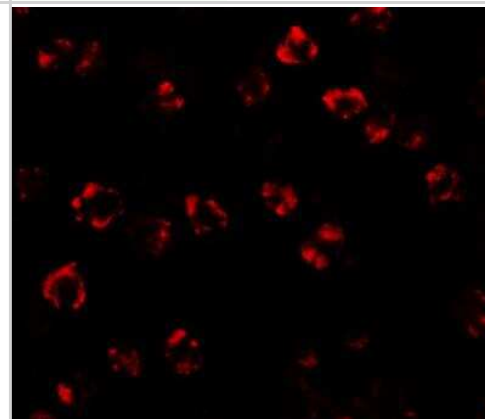
Western Blot: Serine Palmitoyltransferase 2 Antibody [NBP1-76573] - Western Blot Validation in Human Cell Lines. Loading: 15 ug of lysates per lane. Antibodies: Serine Palmitoyltransferase 2, NBP1-76573 (1 ug/mL), 1h incubation at RT in 5% NFDN/TBST. Secondary: Goat anti-rabbit IgG HRP conjugate at 1:10000 dilution.



Western Blot: Serine Palmitoyltransferase 2 Antibody [NBP1-76573] - Western Blot Validation in Human Brain Tissue Lysate. Loading: 15 ug of lysates per lane. Antibodies: Serine Palmitoyltransferase 2, NBP1-76573 (Lane 1: 0.5 ug/mL and Lane 2: 1 ug/mL), 1h incubation at RT in 5% NFDM/TBST. Secondary: Goat anti-rabbit IgG HRP conjugate at 1:10000 dilution.



Immunocytochemistry/Immunofluorescence: Serine Palmitoyltransferase 2 Antibody [NBP1-76573] - Immunofluorescence of SPT2 in 3T3 cells with SPT2 antibody at 20 ug/mL.





### **Novus Biologicals USA**

10730 E. Briarwood Avenue  
Centennial, CO 80112  
USA  
Phone: 303.730.1950  
Toll Free: 1.888.506.6887  
Fax: 303.730.1966  
nb-customerservice@bio-techne.com

### **Bio-Techne Canada**

21 Canmotor Ave  
Toronto, ON M8Z 4E6  
Canada  
Phone: 905.827.6400  
Toll Free: 855.668.8722  
Fax: 905.827.6402  
canada.inquires@bio-techne.com

### **Bio-Techne Ltd**

19 Barton Lane  
Abingdon Science Park  
Abingdon, OX14 3NB, United Kingdom  
Phone: (44) (0) 1235 529449  
Free Phone: 0800 37 34 15  
Fax: (44) (0) 1235 533420  
info.EMEA@bio-techne.com

### **General Contact Information**

www.novusbio.com  
Technical Support: nb-technical@bio-techne.com  
Orders: nb-customerservice@bio-techne.com  
General: novus@novusbio.com

### **Products Related to NBP1-76573**

---

NBP1-76573PEP	Serine Palmitoyltransferase 2 Antibody Blocking Peptide
HAF008	Goat anti-Rabbit IgG Secondary Antibody [HRP]
NB7160	Goat anti-Rabbit IgG (H+L) Secondary Antibody [HRP]
NBP2-24891	Rabbit IgG Isotype Control

---

### **Limitations**

This product is for research use only and is not approved for use in humans or in clinical diagnosis. Primary Antibodies are guaranteed for 1 year from date of receipt.

For more information on our 100% guarantee, please visit [www.novusbio.com/guarantee](http://www.novusbio.com/guarantee)

Earn gift cards/discounts by submitting a review: [www.novusbio.com/reviews/submit/NBP1-76573](http://www.novusbio.com/reviews/submit/NBP1-76573)

Earn gift cards/discounts by submitting a publication using this product:  
[www.novusbio.com/publications](http://www.novusbio.com/publications)

