

Product Datasheet

Donkey anti-Rabbit IgG (H+L) Secondary Antibody (Pre-adsorbed) NBP1-75279

Unit Size: 2 mg

Store at 4C. Do not freeze.

www.novusbio.com



technical@novusbio.com

Publications: 3

Protocols, Publications, Related Products, Reviews, Research Tools and Images at:
www.novusbio.com/NBP1-75279

Updated 10/23/2024 v.20.1

Earn rewards for product
reviews and publications.

Submit a publication at www.novusbio.com/publications

Submit a review at www.novusbio.com/reviews/destination/NBP1-75279



NBP1-75279

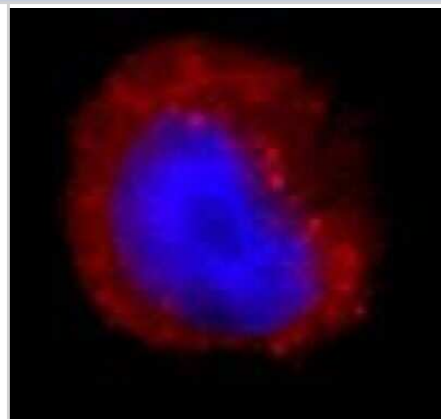
Donkey anti-Rabbit IgG (H+L) Secondary Antibody (Pre-adsorbed)

Product Information	
Unit Size	2 mg
Concentration	Please see the vial label for concentration. If unlisted please contact technical services.
Storage	Store at 4C. Do not freeze.
Clonality	Polyclonal
Preservative	0.05% Sodium Azide
Isotype	IgG
Purity	Affinity purified
Buffer	10 mM Sodium Phosphate, 0.15 M Sodium Chloride, pH 7.2
Product Description	
Description	Purity > 95% based on SDS-PAGE. Donkey serum was obtained from healthy animals of US origin and under the care of a registered veterinarian.
Host	Donkey
Species	Rabbit
Reactivity Notes	Based on IEP, no reactivity is observed to non-immunoglobulin rabbit serum proteins and mouse IgG or serum proteins
Specificity/Sensitivity	Based on IEP, this Donkey anti-Rabbit IgG (H+L) Secondary Antibody (Pre-adsorbed) heavy gamma chains on rabbit IgG and light chains on all rabbit immunoglobulins. This antibody has been pre-adsorbed against mouse IgG or serum proteins.
Immunogen	This Donkey anti-Rabbit IgG (H+L) Secondary Antibody (Pre-adsorbed) was developed against purified rabbit IgG (H&L).
Product Application Details	
Applications	Western Blot, Chemiluminescence Immunoassay, ELISA, Flow Cytometry, Immunoassay, Immunocytochemistry/ Immunofluorescence, Immunohistochemistry, Immunomicroscopy
Recommended Dilutions	Western Blot 1:100-1:2000, Flow Cytometry 1:10-1:1000, ELISA 1:100-1:2000, Immunohistochemistry 1:10 - 1:500, Immunocytochemistry/ Immunofluorescence 1:10 - 1:500, Immunoassay, Immunomicroscopy 1:10 - 1:500, Chemiluminescence Immunoassay
Application Notes	This antibody is suitable for all immunoassay applications.



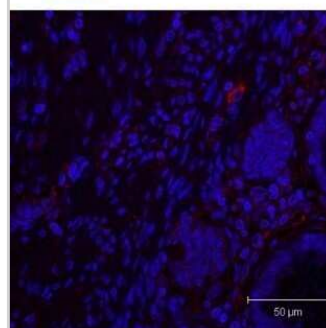
Images

Immunocytochemistry/Immunofluorescence: Donkey anti-Rabbit IgG (H+L) Secondary Antibody (Pre-adsorbed) [NBP1-75279] - West Nile virus infection of mosquito cells were stained with primary antibody followed by DyLight 594 conjugated Donkey anti-Rabbit IgG (H+L) Secondary Antibody (Pre-adsorbed). Image from verified customer review. Image using the DyLight 594 form of this antibody.



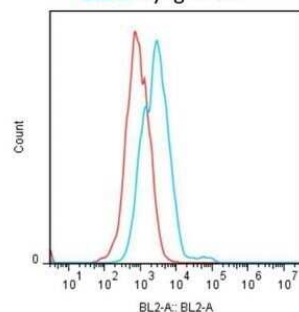
Immunohistochemistry: Donkey anti-Rabbit IgG (H+L) Secondary Antibody (Pre-adsorbed) [NBP1-75279] - Analysis of mouse tissue. Image from verified customer review. Image using the DyLight 550 form of Donkey anti-Rabbit IgG (H+L) Secondary Antibody (Pre-adsorbed).

Red: Dylight 550
Blue: Nuclei stain



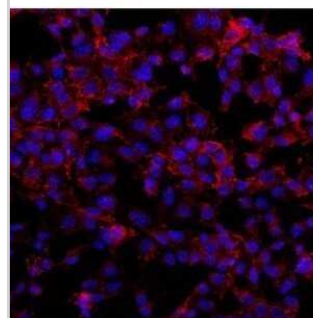
Flow Cytometry: Donkey anti-Rabbit IgG (H+L) Secondary Antibody (Pre-adsorbed) [NBP1-75279] - Analysis of human pancreatic cancer cells. Note: Need to be careful about bleeding into different filters since it might interfere with FITC. Image from verified customer review. Image using the DyLight 550 form of Donkey anti-Rabbit IgG (H+L) Secondary Antibody (Pre-adsorbed).

Red: Isotype
Blue: Dylight 550



Immunocytochemistry/Immunofluorescence: Donkey anti-Rabbit IgG (H+L) Secondary Antibody (Pre-adsorbed) [NBP1-75279] - Analysis of human osteosarcoma cell line. Image from verified customer review. Image using the DyLight 550 form of Donkey anti-Rabbit IgG (H+L) Secondary Antibody (Pre-adsorbed).

Red: dylight 550
Blue: Nuclei stain



Publications

Han Z, Andr  M, Madhavan BK et al. The importance of nuclear RAGE-Mcm2 axis in diabetes or cancer-associated replication stress Nucleic acids research 2023-03-21 [PMID: 36807739] (Rabbit)

Arora R, Van Theemsche KM, Van Remoortel S Et al. Constitutive, Basal, and b-Alanine-Mediated Activation of the Human Mas-Related G Protein-Coupled Receptor D Induces Release of the Inflammatory Cytokine IL-6 and Is Dependent on NF-kB Signaling Int J Mol Sci 2021-12-24 [PMID: 34948051] (WB)

Details:

Citation using the HRP version of this antibody.

England CG, Jiang D, Ehlerding EB et al. (89)Zr-labeled nivolumab for imaging of T-cell infiltration in a humanized murine model of lung cancer Eur J Nucl Med Mol Imaging 2017-08-20 [PMID: 28821924] (IF/IHC)





Novus Biologicals USA

10730 E. Briarwood Avenue
Centennial, CO 80112
USA
Phone: 303.730.1950
Toll Free: 1.888.506.6887
Fax: 303.730.1966
nb-customerservice@bio-techne.com

Bio-Techne Canada

21 Canmotor Ave
Toronto, ON M8Z 4E6
Canada
Phone: 905.827.6400
Toll Free: 855.668.8722
Fax: 905.827.6402
canada.inquires@bio-techne.com

Bio-Techne Ltd

19 Barton Lane
Abingdon Science Park
Abingdon, OX14 3NB, United Kingdom
Phone: (44) (0) 1235 529449
Free Phone: 0800 37 34 15
Fax: (44) (0) 1235 533420
info.EMEA@bio-techne.com

General Contact Information

www.novusbio.com
Technical Support: nb-technical@bio-techne.com
Orders: nb-customerservice@bio-techne.com
General: novus@novusbio.com

Limitations

This product is for research use only and is not approved for use in humans or in clinical diagnosis. Secondary Antibodies are guaranteed for 1 year from date of receipt.

For more information on our 100% guarantee, please visit www.novusbio.com/guarantee

Earn gift cards/discounts by submitting a review: www.novusbio.com/reviews/submit/NBP1-75279

Earn gift cards/discounts by submitting a publication using this product:
www.novusbio.com/publications

