

Product Datasheet

Rabbit anti-Canine IgM Heavy Chain Secondary Antibody [HRP] NBP1-73847-10mg

Unit Size: 10 mg

Store at 4C short term. Aliquot and store at -20C long term. Avoid freeze-thaw cycles.

www.novusbio.com



technical@novusbio.com

Protocols, Publications, Related Products, Reviews, Research Tools and Images at:
www.novusbio.com/NBP1-73847

Updated 10/23/2024 v.20.1

Earn rewards for product
reviews and publications.

Submit a publication at www.novusbio.com/publications

Submit a review at www.novusbio.com/reviews/destination/NBP1-73847



NBP1-73847-10mg

Rabbit anti-Canine IgM Heavy Chain Secondary Antibody [HRP]

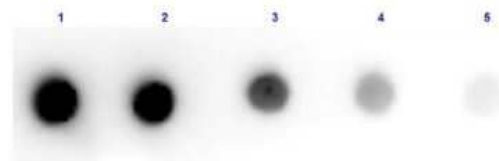
Product Information	
Unit Size	10 mg
Concentration	Please see the vial label for concentration. If unlisted please contact technical services.
Storage	Store at 4C short term. Aliquot and store at -20C long term. Avoid freeze-thaw cycles.
Clonality	Polyclonal
Preservative	0.01% Gentamicin Sulfate
Isotype	IgG
Conjugate	HRP
Purity	Multi-step
Buffer	0.02 M Potassium Phosphate, 0.15 M Sodium Chloride, pH 7.2, 10 mg/mL Bovine Serum Albumin (BSA) - Immunoglobulin and Protease free

Product Description	
Description	<p>For extended storage aliquot contents and freeze at -20C or below. Avoid cycles of freezing and thawing. Centrifuge product if not completely clear after standing at room</p> <p>This product is an IgG fraction antibody purified from monospecific antiserum by a multi-step process which includes delipidation, salt fractionation and ion exchange chromatography followed by extensive dialysis against the buffer stated above. Assay by immunoelectrophoresis resulted in a single precipitin arc against anti-Peroxidase, anti-Rabbit Serum, Dog IgM and Dog Serum</p>
Host	Rabbit
Gene ID	3507
Gene Symbol	IGHM
Species	Canine
Specificity/Sensitivity	No reaction was observed against Dog IgG.
Immunogen	Dog IgM mu heavy chain

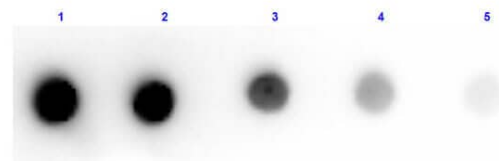
Product Application Details	
Applications	Western Blot, Dot Blot, ELISA, Immunohistochemistry
Recommended Dilutions	Western Blot 1:1000 - 1:10000, ELISA 1:10000 - 1:50000, Immunohistochemistry 1:500 - 1:2500, Dot Blot
Application Notes	<p>This product has been tested dot blot and ELISA. This product is assayed against 1.0 ug of Dog IgM in a standard capture ELISA using ABTS (2,2'-azino-bis-[3-ethylbenthiiazoline-6-sulfonic acid]) as a substrate for 30 minutes at room temperature. A working dilution of 1:4,000 to 1:20,000 of the reconstitution concentration is suggested for this product.</p> <p>NOTE: Do NOT add Sodium Azide (it inhibits HRP irreversibly).</p>

Images

Dot Blot: Rabbit anti-Canine IgM Heavy Chain Secondary Antibody [HRP] [NBP1-73847] - Dot Blot results of Rabbit anti-Canine IgM Heavy Chain Secondary antibody [HRP]. Dots are Dog IgM at (1) 100ng, (2) 33.3ng, (3) 11.1ng, (4) 3.70ng, (5) 1.23ng. Blocking: 30 min at RT. Primary Antibody: none. Secondary Antibody: Rabbit Anti-Dog IgM -HRP at 1ug/mL for 1hr at RT.



Dot Blot results of Rabbit Anti-Dog IgM Antibody Peroxidase Conjugated. Dots are Dog IgM at (1) 100ng, (2) 33.3ng, (3) 11.1ng, (4) 3.70ng, (5) 1.23ng. Blocking: for 30 min at RT. Primary Antibody: none. Secondary Antibody: Rabbit Anti-Dog IgM-HRP at 1ug/mL for 1hr at RT. Imaged with BioRad ChemiDoc, Chemi filter.





Novus Biologicals USA

10730 E. Briarwood Avenue
Centennial, CO 80112
USA
Phone: 303.730.1950
Toll Free: 1.888.506.6887
Fax: 303.730.1966
nb-customerservice@bio-techne.com

Bio-Techne Canada

21 Canmotor Ave
Toronto, ON M8Z 4E6
Canada
Phone: 905.827.6400
Toll Free: 855.668.8722
Fax: 905.827.6402
canada.inquires@bio-techne.com

Bio-Techne Ltd

19 Barton Lane
Abingdon Science Park
Abingdon, OX14 3NB, United Kingdom
Phone: (44) (0) 1235 529449
Free Phone: 0800 37 34 15
Fax: (44) (0) 1235 533420
info.EMEA@bio-techne.com

General Contact Information

www.novusbio.com
Technical Support: nb-technical@bio-techne.com
Orders: nb-customerservice@bio-techne.com
General: novus@novusbio.com

Products Related to NBP1-73847-10mg

NB100-524	NOD2 Antibody (2D9) - BSA Free
NBP1-96772	Human IgM Heavy Chain Isotype Control
7268-CT-100	CTLA-4 [Unconjugated]
NB200-541	Complement C4b/d Antibody (16D2)

Limitations

This product is for research use only and is not approved for use in humans or in clinical diagnosis. Secondary Antibodies are guaranteed for 1 year from date of receipt.

For more information on our 100% guarantee, please visit www.novusbio.com/guarantee

Earn gift cards/discounts by submitting a review: www.novusbio.com/reviews/submit/NBP1-73847

Earn gift cards/discounts by submitting a publication using this product:
www.novusbio.com/publications

