

Product Datasheet

Rabbit anti-Mouse IgG1 Heavy Chain Secondary Antibody [FITC] NBP1-73636

Unit Size: 1 mg

Store lyophilized antibody at 4C in the dark. Aliquot reconstituted liquid and store at -20C. Avoid freeze-thaw cycles.

www.novusbio.com



technical@novusbio.com

Publications: 1

Protocols, Publications, Related Products, Reviews, Research Tools and Images at:
www.novusbio.com/NBP1-73636

Updated 10/23/2024 v.20.1

Earn rewards for product
reviews and publications.

Submit a publication at www.novusbio.com/publications

Submit a review at www.novusbio.com/reviews/destination/NBP1-73636



NBP1-73636**Rabbit anti-Mouse IgG1 Heavy Chain Secondary Antibody [FITC]**

Product Information	
Unit Size	1 mg
Concentration	LYOPH mg/ml
Storage	Store lyophilized antibody at 4C in the dark. Aliquot reconstituted liquid and store at -20C. Avoid freeze-thaw cycles.
Clonality	Polyclonal
Preservative	0.01% Sodium Azide
Reconstitution Instructions	Reconstitute with 1.0 ml deionized water (or equivalent).
Isotype	IgG
Conjugate	FITC
Purity	Multi-step
Buffer	Lyophilized from 0.02 M Potassium Phosphate, 0.15 M Sodium Chloride, pH 7.2, 10 mg/mL Bovine Serum Albumin (BSA) - Immunoglobulin and Protease free

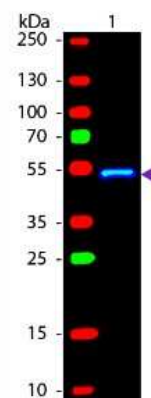
Product Description	
Description	<p>Store vial at 4C prior to restoration. For extended storage aliquot contents and freeze at -20C or below. Avoid cycles of freezing and thawing. Centrifuge product if not completely clear after standing at room temperature. This product is stable for several weeks at 4C as an undiluted liquid. Dilute only prior to immediate use.</p> <p>This product was prepared from monospecific antiserum by immunoaffinity chromatography using antigens coupled to agarose beads followed by solid phase adsorption(s) to remove any unwanted reactivities. Assay by immunoelectrophoresis resulted in a single precipitin arc against anti-Fluorescein, anti-Rabbit Serum, Mouse IgG and Mouse Serum</p>
Host	Rabbit
Species	Mouse
Specificity/Sensitivity	Specificity was confirmed by ELISA.
Immunogen	Mouse IgG1 heavy chain

Product Application Details	
Applications	Western Blot, Fluorophore-linked immunosorbent assay, Flow Cytometry, Immunocytochemistry/ Immunofluorescence
Recommended Dilutions	Western Blot, Flow Cytometry, Immunocytochemistry/ Immunofluorescence 1:500 - 1:2500, Fluorophore-linked immunosorbent assay 1:10000 - 1:50000
Application Notes	This product is available in a variety of formats. Anti-Mouse IgG1 Fluorescein Antibody has been tested by western blot and is suitable for immunofluorescence microscopy, fluorescence based plate assays (FLISA) and fluorescent western blotting. This IgG1 antibody is also suitable for multiplex analysis, including multicolor imaging, utilizing various commercial platforms.

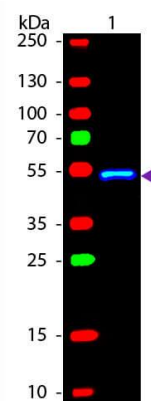


Images

Western Blot: Rabbit anti-Mouse IgG1 Heavy Chain Secondary Antibody [FITC] [NBP1-73636] - Lane 1: Mouse IgG1. Lane 2: None. Load: 50 ng per lane. Primary antibody: None. Secondary antibody: Fluorescein rabbit secondary antibody at 1:1,000 for 60 min at RT. Blocking: incubated with blocking buffer for 30 min at RT. Predicted/Observed size: 55 kDa, 55 kDa for Mouse IgG1 (Gamma 1 chain). Other band(s): None.



Western blot of Fluorescein conjugated Rabbit Anti-Mouse IgG1 (Gamma 1 chain) secondary antibody. Lane 1: Mouse IgG1. Lane 2: None. Load: 50 ng per lane. Primary antibody: None. Secondary antibody: Fluorescein rabbit secondary antibody at 1:1,000 for 60 min at RT. Blocking: for 30 min at RT. Predicted/Observed size: 55 kDa, 55 kDa for Mouse IgG1 (Gamma 1 chain). Other band(s): None.



Publications

Packer D, Martin PT. Micro-laminin gene therapy can function as an inhibitor of muscle disease in the dy(W) mouse model of MDC1A Mol Ther Methods Clin Dev 2021-04-19 [PMID: 33869655]

Details:

Citation using the FITC version of this antibody.



Novus Biologicals USA

10730 E. Briarwood Avenue
Centennial, CO 80112
USA
Phone: 303.730.1950
Toll Free: 1.888.506.6887
Fax: 303.730.1966
nb-customerservice@bio-techne.com

Bio-Techne Canada

21 Canmotor Ave
Toronto, ON M8Z 4E6
Canada
Phone: 905.827.6400
Toll Free: 855.668.8722
Fax: 905.827.6402
canada.inquires@bio-techne.com

Bio-Techne Ltd

19 Barton Lane
Abingdon Science Park
Abingdon, OX14 3NB, United Kingdom
Phone: (44) (0) 1235 529449
Free Phone: 0800 37 34 15
Fax: (44) (0) 1235 533420
info.EMEA@bio-techne.com

General Contact Information

www.novusbio.com
Technical Support: nb-technical@bio-techne.com
Orders: nb-customerservice@bio-techne.com
General: novus@novusbio.com

Limitations

This product is for research use only and is not approved for use in humans or in clinical diagnosis. Secondary Antibodies are guaranteed for 1 year from date of receipt.

For more information on our 100% guarantee, please visit www.novusbio.com/guarantee

Earn gift cards/discounts by submitting a review: www.novusbio.com/reviews/submit/NBP1-73636

Earn gift cards/discounts by submitting a publication using this product:
www.novusbio.com/publications

