

# Product Datasheet

## **Donkey anti-Sheep IgG (H+L) Secondary Antibody [DyLight 680] (Pre-adsorbed) NBP1-73005**

Unit Size: 0.1 mg

Store lyophilized antibody at 4C in the dark. Aliquot reconstituted liquid and store at -20C. Avoid freeze-thaw cycles.

[www.novusbio.com](http://www.novusbio.com)



[technical@novusbio.com](mailto:technical@novusbio.com)

Protocols, Publications, Related Products, Reviews, Research Tools and Images at:  
[www.novusbio.com/NBP1-73005](http://www.novusbio.com/NBP1-73005)

Updated 10/23/2024 v.20.1

**Earn rewards for product reviews and publications.**

Submit a publication at [www.novusbio.com/publications](http://www.novusbio.com/publications)

Submit a review at [www.novusbio.com/reviews/destination/NBP1-73005](http://www.novusbio.com/reviews/destination/NBP1-73005)



**NBP1-73005**

Donkey anti-Sheep IgG (H+L) Secondary Antibody [DyLight 680] (Pre-adsorbed)

Product Information	
Unit Size	0.1 mg
Concentration	LYOPH mg/ml
Storage	Store lyophilized antibody at 4C in the dark. Aliquot reconstituted liquid and store at -20C. Avoid freeze-thaw cycles.
Clonality	Polyclonal
Preservative	0.01% Sodium Azide
Reconstitution Instructions	Reconstitute with 100 ul deionized water (or equivalent).
Isotype	IgG
Conjugate	DyLight 680
Purity	Multi-step
Buffer	Lyophilized from 0.02 M Potassium Phosphate, 0.15 M Sodium Chloride, pH 7.2, 10 mg/mL Bovine Serum Albumin (BSA) - Immunoglobulin and Protease free

Product Description	
Description	<p>Store vial at 4C prior to restoration. For extended storage aliquot contents and freeze at -20C or below. Avoid cycles of freezing and thawing. Centrifuge product if not completely clear after standing at room temperature. This product is stable for several weeks at 4C as an undiluted liquid. Dilute only prior to immediate use.</p> <p>This product was prepared from monospecific antiserum by immunoaffinity chromatography using Sheep IgG coupled to agarose beads followed by solid phase adsorption(s) to remove any unwanted reactivities. Assay by immunoelectrophoresis resulted in a single precipitin arc against anti-Donkey Serum, Sheep IgG and Sheep Serum</p>
Host	Donkey
Species	Sheep
Specificity/Sensitivity	<p>This antibody was pre-adsorbed against Chicken, Guinea Pig, Hamster, Horse, Human, Mouse, Rabbit, and Rat Serum Proteins.</p> <p>No reaction was observed against Chicken, Guinea Pig, Hamster, Horse, Human, Mouse, Rabbit or Rat Serum Proteins. This antibody will react with heavy chains of Sheep IgG and with light chains of most Sheep immunoglobulins.</p>
Immunogen	Sheep IgG whole molecule
Notes	DyLight (R) is a trademark of Thermo Fisher Scientific Inc. and its subsidiaries.

Product Application Details	
Applications	Western Blot, Fluorophore-linked immunosorbent assay, Immunocytochemistry/ Immunofluorescence
Recommended Dilutions	Western Blot 1:10000, Immunocytochemistry/ Immunofluorescence 1:5000, Fluorophore-linked immunosorbent assay 1:20000

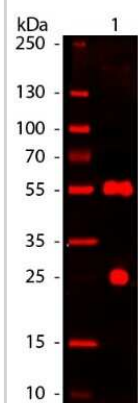


**Application Notes**

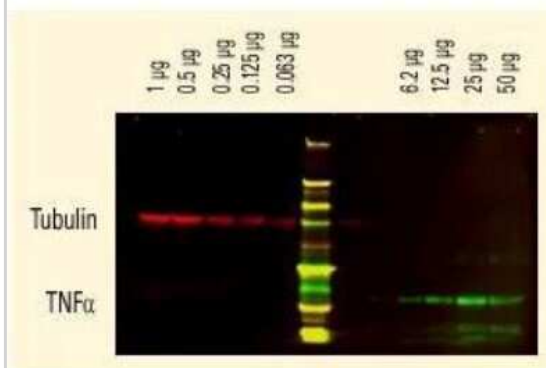
This product has been tested by western blot and is designed for immunofluorescence microscopy, fluorescence based plate assays (FLISA) and fluorescent western blotting. This product is also suitable for multiplex analysis, including multicolor imaging, utilizing various commercial platforms. The emission spectra for this DyLight(TM) conjugate match the principle output wavelengths of most common fluorescence instrumentation.

**Images**

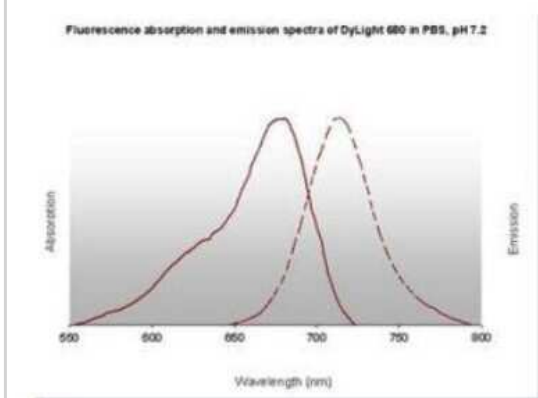
Western Blot: Donkey anti-Sheep IgG (H+L) Secondary Antibody [DyLight 680] (Pre-adsorbed) [NBP1-73005] - Western blot of Donkey anti-Sheep IgG (H+L) Secondary antibody [DyLight 680] (Pre-adsorbed). Lane 1: Sheep IgG. Lane 2: None. Load: 50 ng per lane. Primary antibody: None. Secondary antibody: DyLight (TM) 680 donkey secondary antibody at 1:5,000 for 60 min at RT. Blocking: 30 min at RT. Predicted/Observed size: 25 & 55 kDa, 25 & 55 kDa for Sheep IgG. Other band(s): None.



Western Blot: Donkey anti-Sheep IgG (H+L) Secondary Antibody [DyLight 680] (Pre-adsorbed) [NBP1-73005] - DyLight (TM) dyes can be used for two-color Western Blot detection with low background and high signal. Anti-tubulin was detected using a DyLight (TM) 680 conjugate. Anti-TNF $\alpha$  was detected using a DyLight (TM) 800 conjugate. The image was captured using the Odyssey(R) Infrared Imaging System developed by LI-COR.



N/A: Donkey anti-Sheep IgG (H+L) Secondary Antibody [DyLight 680] (Pre-adsorbed) [NBP1-73005] - Donkey anti-Sheep IgG (H+L) Secondary antibody [DyLight 680] (Pre-adsorbed) Pre-Adsorbed





### **Novus Biologicals USA**

10730 E. Briarwood Avenue  
Centennial, CO 80112  
USA  
Phone: 303.730.1950  
Toll Free: 1.888.506.6887  
Fax: 303.730.1966  
nb-customerservice@bio-techne.com

### **Bio-Techne Canada**

21 Canmotor Ave  
Toronto, ON M8Z 4E6  
Canada  
Phone: 905.827.6400  
Toll Free: 855.668.8722  
Fax: 905.827.6402  
canada.inquires@bio-techne.com

### **Bio-Techne Ltd**

19 Barton Lane  
Abingdon Science Park  
Abingdon, OX14 3NB, United Kingdom  
Phone: (44) (0) 1235 529449  
Free Phone: 0800 37 34 15  
Fax: (44) (0) 1235 533420  
info.EMEA@bio-techne.com

### **General Contact Information**

www.novusbio.com  
Technical Support: nb-technical@bio-  
techne.com  
Orders: nb-customerservice@bio-techne.com  
General: novus@novusbio.com

### **Limitations**

This product is for research use only and is not approved for use in humans or in clinical diagnosis. Secondary Antibodies are guaranteed for 1 year from date of receipt.

For more information on our 100% guarantee, please visit [www.novusbio.com/guarantee](http://www.novusbio.com/guarantee)

Earn gift cards/discounts by submitting a review: [www.novusbio.com/reviews/submit/NBP1-73005](http://www.novusbio.com/reviews/submit/NBP1-73005)

Earn gift cards/discounts by submitting a publication using this product:  
[www.novusbio.com/publications](http://www.novusbio.com/publications)

