

# Product Datasheet

## Rabbit anti-Mouse IgG1 Heavy Chain Secondary Antibody NBP1-72793

Unit Size: 1 mg

Store at 4C short term. Aliquot and store at -20C long term. Avoid freeze-thaw cycles.

[www.novusbio.com](http://www.novusbio.com)



[technical@novusbio.com](mailto:technical@novusbio.com)

### Publications: 3

Protocols, Publications, Related Products, Reviews, Research Tools and Images at:  
[www.novusbio.com/NBP1-72793](http://www.novusbio.com/NBP1-72793)

Updated 10/23/2024 v.20.1

Earn rewards for product  
reviews and publications.

Submit a publication at [www.novusbio.com/publications](http://www.novusbio.com/publications)

Submit a review at [www.novusbio.com/reviews/destination/NBP1-72793](http://www.novusbio.com/reviews/destination/NBP1-72793)

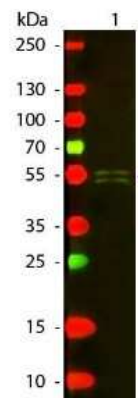


**NBP1-72793****Rabbit anti-Mouse IgG1 Heavy Chain Secondary Antibody**

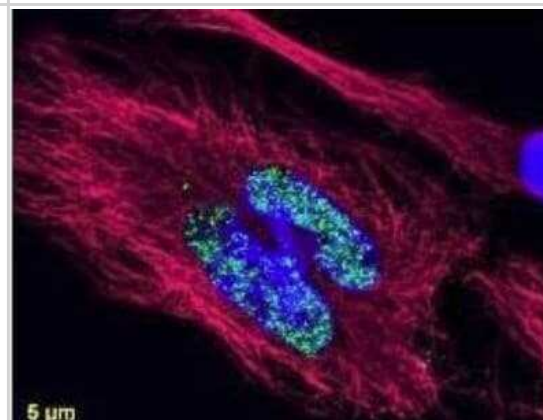
<b>Product Information</b>	
<b>Unit Size</b>	1 mg
<b>Concentration</b>	Please see the vial label for concentration. If unlisted please contact technical services.
<b>Storage</b>	Store at 4C short term. Aliquot and store at -20C long term. Avoid freeze-thaw cycles.
<b>Clonality</b>	Polyclonal
<b>Preservative</b>	0.01% Sodium Azide
<b>Isotype</b>	IgG
<b>Purity</b>	Multi-step
<b>Buffer</b>	0.02 M Potassium Phosphate, 0.15 M Sodium Chloride, pH 7.2
<b>Product Description</b>	
<b>Description</b>	<p>This product was prepared from monospecific antiserum by immunoaffinity chromatography using antigens coupled to agarose beads followed by solid phase adsorption(s) to remove any unwanted reactivities. Assay by immunoelectrophoresis resulted in a single precipitin arc against anti-Rabbit Serum, Mouse Serum and Mouse IgG.</p> <p>Store vial at 4C prior to opening. This product is stable for several weeks at 4C as an undiluted liquid. Dilute only prior to immediate use. For extended storage aliquot contents and freeze at -20C or below. Avoid cycles of freezing and thawing.</p>
<b>Host</b>	Rabbit
<b>Species</b>	Mouse
<b>Immunogen</b>	Mouse IgG1 heavy chain
<b>Product Application Details</b>	
<b>Applications</b>	Western Blot, Dot Blot, ELISA, Fluorophore-linked immunosorbent assay, Immunocytochemistry/ Immunofluorescence, Immunohistochemistry, Immunohistochemistry-Paraffin
<b>Recommended Dilutions</b>	Western Blot 1:2000 - 1:10000, ELISA 1:20000 - 1:100000, Immunohistochemistry 1:1000 - 1:5000, Immunocytochemistry/ Immunofluorescence, Immunohistochemistry-Paraffin 1:1000 - 1:5000, Dot Blot, Fluorophore-linked immunosorbent assay
<b>Application Notes</b>	This product is available in a variety of formats. Anti-Mouse IgG1 Antibody has been tested by ELISA and dot blot and is suitable for ELISA, Immunohistochemistry western blotting as well as other anti IgG1 antibody based assays.

## Images

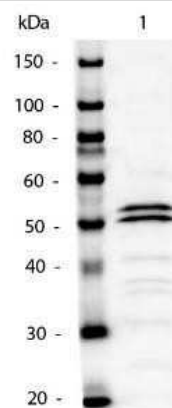
Western Blot: Rabbit anti-Mouse IgG1 Heavy Chain Secondary Antibody [NBP1-72793] - Lane 1: Mouse IgG1. Lane 2: None. Load: 50 ng per lane. Primary antibody: None. Secondary antibody: Texas Red rabbit secondary antibody at 1:1,000 for 60 min at RT. Blocking: incubated with blocking buffer for 30 min at RT. Predicted/Observed size: 55 kDa, 55 kDa for Mouse IgG1 (Gamma 1 chain). Other band(s): None.



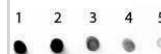
Immunocytochemistry/Immunofluorescence: Rabbit anti-Mouse IgG1 Heavy Chain Secondary Antibody [NBP1-72793] - DyLight (R) dyes can be used for multi-color immunofluorescence microscopy with uniform fluorescence intensity throughout the image. Image using the DyLight 488 format of this antibody.



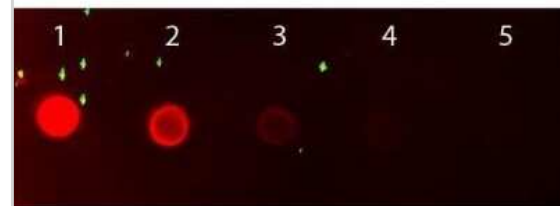
Western Blot: Rabbit anti-Mouse IgG1 Heavy Chain Secondary Antibody [NBP1-72793] - Lane 1: Mouse IgG1. Lane 2: none. Load: 50ng per lane. Primary antibody: none. Secondary antibody: Mouse IgG1 Secondary Antibody Alkaline Phosphatase Conjugated at 1:1,000 o/n at 4C. Block: incubated with blocking buffer for 30 min at RT. Reaction visualized using alkaline phosphatase substrate for 30 seconds. Predicted/Observed size: 55 kDa for Mouse IgG1.



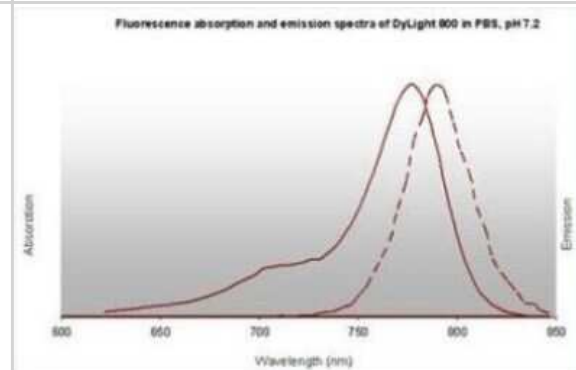
Dot Blot: Rabbit anti-Mouse IgG1 Heavy Chain Secondary Antibody [NBP1-72793] - Mouse IgG1. Load: Lane 1 - 200ng Lane 2 - 66.7ng Lane 3 - 22.2ng Lane 4 - 7.4ng Lane 5 - 2.5ng.



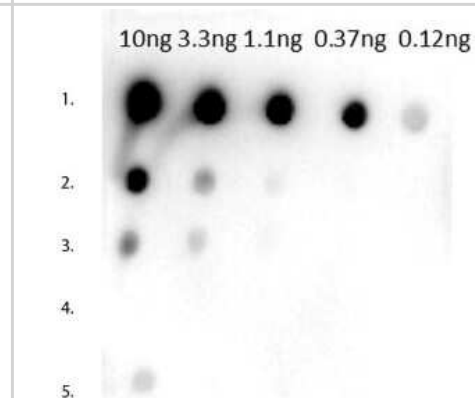
Dot Blot: Rabbit anti-Mouse IgG1 Heavy Chain Secondary Antibody [NBP1-72793] - Mouse IgG1. Load: Lane 1 - 50ng Lane 2 - 16.67ng Lane 3 - 5.56ng Lane 4 - 1.85ng Lane 5 - 0.62ng.



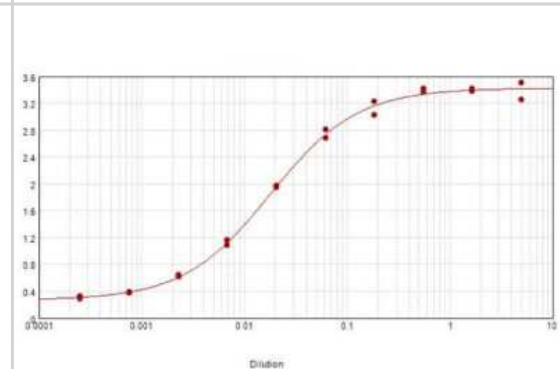
Fluorophore-linked immunosorbent assay: Rabbit anti-Mouse IgG1 Heavy Chain Secondary Antibody [NBP1-72793] - Fluorescence absorption and emission spectra of Dylight 800 in PBS, pH 7.2.



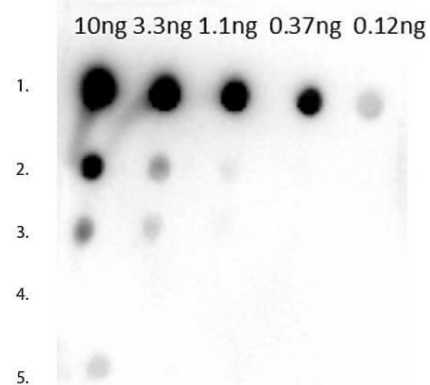
Dot Blot: Rabbit anti-Mouse IgG1 Heavy Chain Secondary Antibody [NBP1-72793]



ELISA: Rabbit anti-Mouse IgG1 Heavy Chain Secondary Antibody [NBP1-72793] - ELISA results of purified Rabbit anti-Mouse IgG1 Heavy Chain Secondary antibody tested against purified Mouse IgG1. Each well was coated in duplicate with 1.0 ug of Mouse IgG1. The starting dilution of antibody was 5ug/ml and the X-axis represents the Log10 of a 3-fold dilution. This titration is a 4-parameter curve fit where the IC50 is defined as the titer of the antibody. Assay performed using Blocking buffer, Goat anti-Rabbit HRP, and TMB substrate.



Dot Blot of Rabbit anti-Mouse IgG1 Heavy Chain Secondary Antibody. Tested against dilutions 10ng, 3.3ng, 1.1ng, 0.37ng, 0.12ng. Lane 1: Mouse IgG1



## Publications

William F Jiemy, Yannick van Sleen, Kornelis SM van der Geest, Hilde A ten Berge, Wayel H Abdulahad, Maria Sandovici, Annemieke MH Boots, Peter Heeringa, Elisabeth Brouwer Distinct macrophage phenotypes skewed by local granulocyte macrophage colony-stimulating factor (GM-CSF) and macrophage colony-stimulating factor (M-CSF) are associated with tissue destruction and intimal hyperplasia in giant cell arteritis *Clinical & Translational Immunology* 2020-08-27 [PMID: 32884747]

Packer D, Martin PT. Micro-laminin gene therapy can function as an inhibitor of muscle disease in the dy(W) mouse model of MDC1A *Mol Ther Methods Clin Dev* 2021-04-19 [PMID: 33869655]

Details:

Citation using the FITC version of this antibody.

Strait Rt, Posgai Mt, Mahler A et al. IgG1 protects against renal disease in a mouse model of cryoglobulinaemia. *Nature*. [PMID: 25363774] (IHC-P)

Details:

Citation using the Biotin form of this antibody.



### **Novus Biologicals USA**

10730 E. Briarwood Avenue  
Centennial, CO 80112  
USA  
Phone: 303.730.1950  
Toll Free: 1.888.506.6887  
Fax: 303.730.1966  
nb-customerservice@bio-techne.com

### **Bio-Techne Canada**

21 Canmotor Ave  
Toronto, ON M8Z 4E6  
Canada  
Phone: 905.827.6400  
Toll Free: 855.668.8722  
Fax: 905.827.6402  
canada.inquires@bio-techne.com

### **Bio-Techne Ltd**

19 Barton Lane  
Abingdon Science Park  
Abingdon, OX14 3NB, United Kingdom  
Phone: (44) (0) 1235 529449  
Free Phone: 0800 37 34 15  
Fax: (44) (0) 1235 533420  
info.EMEA@bio-techne.com

### **General Contact Information**

www.novusbio.com  
Technical Support: nb-technical@bio-techne.com  
Orders: nb-customerservice@bio-techne.com  
General: novus@novusbio.com

### **Limitations**

This product is for research use only and is not approved for use in humans or in clinical diagnosis. Secondary Antibodies are guaranteed for 1 year from date of receipt.

For more information on our 100% guarantee, please visit [www.novusbio.com/guarantee](http://www.novusbio.com/guarantee)

Earn gift cards/discounts by submitting a review: [www.novusbio.com/reviews/submit/NBP1-72793](http://www.novusbio.com/reviews/submit/NBP1-72793)

Earn gift cards/discounts by submitting a publication using this product:  
[www.novusbio.com/publications](http://www.novusbio.com/publications)

