

# Product Datasheet

## Goat anti-Human Lambda Light Chain Secondary Antibody NBP1-72788

Unit Size: 1 mg

Store at 4C short term. Aliquot and store at -20C long term. Avoid freeze-thaw cycles.

[www.novusbio.com](http://www.novusbio.com)



[technical@novusbio.com](mailto:technical@novusbio.com)

Reviews: 1

Protocols, Publications, Related Products, Reviews, Research Tools and Images at:  
[www.novusbio.com/NBP1-72788](http://www.novusbio.com/NBP1-72788)

Updated 4/29/2025 v.20.1

Earn rewards for product  
reviews and publications.

Submit a publication at [www.novusbio.com/publications](http://www.novusbio.com/publications)

Submit a review at [www.novusbio.com/reviews/destination/NBP1-72788](http://www.novusbio.com/reviews/destination/NBP1-72788)



**NBP1-72788****Goat anti-Human Lambda Light Chain Secondary Antibody**

<b>Product Information</b>	
<b>Unit Size</b>	1 mg
<b>Concentration</b>	Please see the vial label for concentration. If unlisted please contact technical services.
<b>Storage</b>	Store at 4C short term. Aliquot and store at -20C long term. Avoid freeze-thaw cycles.
<b>Clonality</b>	Polyclonal
<b>Preservative</b>	0.1% Sodium Azide
<b>Isotype</b>	IgG
<b>Purity</b>	Multi-step
<b>Buffer</b>	0.125 M Sodium Borate, 0.075 M Sodium Chloride, 0.005 M EDTA, pH 8.0

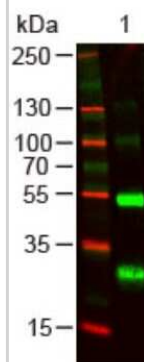
<b>Product Description</b>	
<b>Description</b>	<p>This product was prepared from monospecific antiserum by immunoaffinity chromatography using Human IgG coupled to agarose beads followed by solid phase adsorption(s) to remove any unwanted reactivities. Assay by immunoelectrophoresis resulted in a single precipitin arc against anti-Goat Serum. Solid phase adsorption(s) against a panel of Human IgG Kappa, IgM Kappa and IgA Kappa proteins was performed</p> <p>Store vial at 4C prior to opening. This product is stable for several weeks at 4C as an undiluted liquid. Dilute only prior to immediate use. For extended storage aliquot contents and freeze at -20C or below. Avoid cycles of freezing and thawing.</p>
<b>Host</b>	Goat
<b>Gene ID</b>	3537
<b>Gene Symbol</b>	IGLC1
<b>Species</b>	Human
<b>Specificity/Sensitivity</b>	Specificity was confirmed by ELISA.
<b>Immunogen</b>	Goat anti-Human Lambda Light Chain Secondary Antibody was produced by repeated immunization with Human lambda light chain molecule in goat.

<b>Product Application Details</b>	
<b>Applications</b>	Western Blot, ELISA, Immunocytochemistry/ Immunofluorescence, Immunohistochemistry
<b>Recommended Dilutions</b>	Western Blot 1:500 - 1:2000, ELISA 1:4000 - 1:20000, Immunohistochemistry 1:1000 - 1:5000, Immunocytochemistry/ Immunofluorescence
<b>Application Notes</b>	This product has been tested by ELISA and western blot and is ideal for investigators who routinely perform ELISA, Sandwich ELISA, titration assays, western-blot, immunoprecipitation and more generally immunoassays.

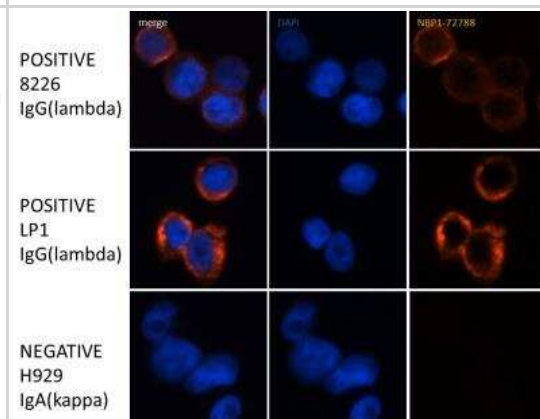


## Images

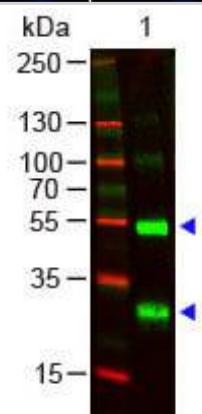
Western Blot: Goat anti-Human Lambda Light Chain Secondary Antibody [Unconjugated] [NBP1-72788] - Lane 1: Human lambda (lambda chain). Lane 2: None. Load: 100 ng per lane. Primary antibody: Human lambda (lambda chain) Antibody at 1:1000 for overnight at 4C. Secondary antibody: DyLight800 Donkey anti-Goat at 1:20,000 for 30 min at RT. Block: incubated with blocking buffer for 30 min at RT. Other Band(s): None.



Immunocytochemistry/Immunofluorescence: Goat anti-Human Lambda Light Chain Secondary Antibody [Unconjugated] [NBP1-72788] - Human multiple myeloma cell lines 8226, LP-1, H929. 1. Cells immersion-fixed in 4% PFA for 10 minutes, washed 3x with PBS. Permeabilized with 0.5% Triton X-100 for 5 minutes, washed 3x with PBS. Blocked with 10% donkey serum 1 hour. NBP1-72788 antibody at 1:5000 O/N at 4C, washed 3x with PBS. Secondary antibody at 1:2000 donkey F(ab')Cy3 anti-goat IgG (H+L) 1 hour at room temp (Jackson #705-166-147); washed 3x with PBS. Imaging with Olympus/BIOVIEW Cy3 filter 300ms exposure. ICC/IF image submitted by a verified customer review.



Western Blot of Goat anti-Human lambda chain Antibody. Lane 1: Human lambda chain. Lane 2: None. Load: 100 ng per lane. Primary antibody: Human lambda chain Antibody at 1:1000 for overnight at 4C. Secondary antibody: DyLight800 Donkey anti-Goat at 1:20,000 for 30 min at RT. Block for 30 min at RT. Other Band(s): None.





### **Novus Biologicals USA**

10730 E. Briarwood Avenue  
Centennial, CO 80112  
USA  
Phone: 303.730.1950  
Toll Free: 1.888.506.6887  
Fax: 303.730.1966  
nb-customerservice@bio-techne.com

### **Bio-Techne Canada**

21 Canmotor Ave  
Toronto, ON M8Z 4E6  
Canada  
Phone: 905.827.6400  
Toll Free: 855.668.8722  
Fax: 905.827.6402  
canada.inquires@bio-techne.com

### **Bio-Techne Ltd**

19 Barton Lane  
Abingdon Science Park  
Abingdon, OX14 3NB, United Kingdom  
Phone: (44) (0) 1235 529449  
Free Phone: 0800 37 34 15  
Fax: (44) (0) 1235 533420  
info.EMEA@bio-techne.com

### **General Contact Information**

www.novusbio.com  
Technical Support: nb-technical@bio-  
techne.com  
Orders: nb-customerservice@bio-techne.com  
General: novus@novusbio.com

### **Limitations**

This product is for research use only and is not approved for use in humans or in clinical diagnosis. Secondary Antibodies are guaranteed for 1 year from date of receipt.

For more information on our 100% guarantee, please visit [www.novusbio.com/guarantee](http://www.novusbio.com/guarantee)

Earn gift cards/discounts by submitting a review: [www.novusbio.com/reviews/submit/NBP1-72788](http://www.novusbio.com/reviews/submit/NBP1-72788)

Earn gift cards/discounts by submitting a publication using this product:  
[www.novusbio.com/publications](http://www.novusbio.com/publications)

