

# Product Datasheet

## Donkey anti-Sheep IgG (H+L) Secondary Antibody (Pre-adsorbed) NBP1-72745

Unit Size: 1 mg

Store at 4C short term. Aliquot and store at -20C long term. Avoid freeze-thaw cycles.

[www.novusbio.com](http://www.novusbio.com)



[technical@novusbio.com](mailto:technical@novusbio.com)

### Publications: 2

Protocols, Publications, Related Products, Reviews, Research Tools and Images at:  
[www.novusbio.com/NBP1-72745](http://www.novusbio.com/NBP1-72745)

Updated 10/23/2024 v.20.1

Earn rewards for product  
reviews and publications.

Submit a publication at [www.novusbio.com/publications](http://www.novusbio.com/publications)

Submit a review at [www.novusbio.com/reviews/destination/NBP1-72745](http://www.novusbio.com/reviews/destination/NBP1-72745)



**NBP1-72745**

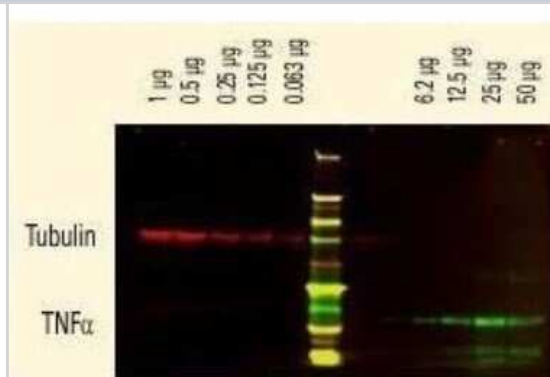
Donkey anti-Sheep IgG (H+L) Secondary Antibody (Pre-adsorbed)

Product Information	
Unit Size	1 mg
Concentration	Please see the vial label for concentration. If unlisted please contact technical services.
Storage	Store at 4C short term. Aliquot and store at -20C long term. Avoid freeze-thaw cycles.
Clonality	Polyclonal
Preservative	0.01% Sodium Azide
Isotype	IgG
Purity	Multi-step
Buffer	0.02 M Potassium Phosphate, 0.15 M Sodium Chloride, pH 7.2
Product Description	
Description	<p>This product was prepared from monospecific antiserum by immunoaffinity chromatography using Sheep IgG coupled to agarose beads followed by solid phase adsorption(s) to remove any unwanted reactivities. Assay by immunoelectrophoresis resulted in a single precipitin arc against anti-Donkey Serum, Sheep IgG and Sheep Serum</p> <p>Store vial at 4C prior to opening. This product is stable for several weeks at 4C as an undiluted liquid. Dilute only prior to immediate use. For extended storage aliquot contents and freeze at -20C or below. Avoid cycles of freezing and thawing.</p>
Host	Donkey
Species	Sheep
Specificity/Sensitivity	<p>This antibody was pre-adsorbed against Chicken, Guinea Pig, Hamster, Horse, Human, Mouse, Rabbit, and Rat Serum Proteins.</p> <p>No reaction was observed against Chicken, Guinea Pig, Hamster, Horse, Human, Mouse, Rabbit and Rat Serum Proteins.</p>
Immunogen	Donkey anti-Sheep IgG (H+L) Secondary Antibody (Pre-adsorbed) was produced by repeated immunization with Sheep IgG whole molecule in donkey.
Product Application Details	
Applications	Western Blot, ELISA, Fluorophore-linked immunosorbent assay, Immunocytochemistry/ Immunofluorescence, Immunohistochemistry
Recommended Dilutions	Western Blot 1:2000 - 1:10000, ELISA 1:20000 - 1:100000, Immunohistochemistry 1:1000 - 1:5000, Immunocytochemistry/ Immunofluorescence, Fluorophore-linked immunosorbent assay
Application Notes	This product has been tested by ELISA and is suitable for use in immunoelectrophoresis, western-blot, competitive western-blot, ELISA and competitive ELISA assays. Specific conditions for reactivity and signal detection should be optimized by the end user.

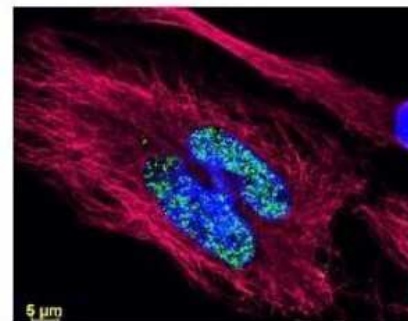


## Images

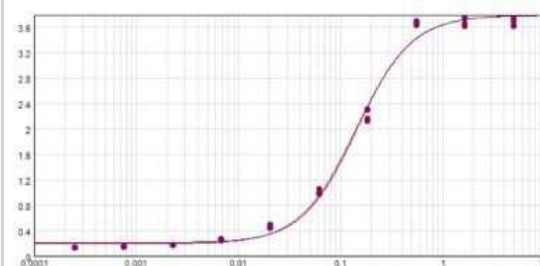
Western Blot: Donkey anti-Sheep IgG (H+L) Secondary Antibody (Pre-adsorbed) [NBP1-72745] - DyLight(TM) dyes can be used for two-color western blot detection with low background and high signal. Anti-tubulin was detected using a DyLight(TM) 680 conjugate. Anti-TNF $\alpha$  was detected using a DyLight(TM) 800 conjugate. The image was captured using the Odyssey(R) Infrared Imaging System developed by LI-COR.



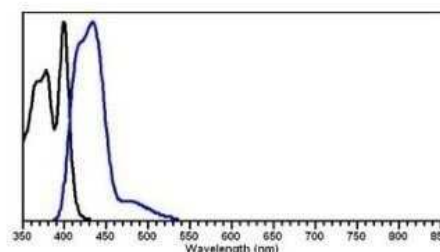
Immunocytochemistry/Immunofluorescence: Donkey anti-Sheep IgG (H+L) Secondary Antibody (Pre-adsorbed) [NBP1-72745] - Immunocytochemistry/Immunofluorescence: Donkey anti-Sheep IgG (H+L) Secondary Antibody [DyLight 488] (Pre-adsorbed) [NBP1-73002] Image from the DyLight 488 version of this antibody.



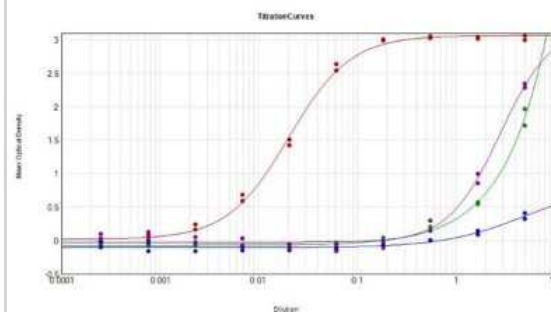
ELISA: Donkey anti-Sheep IgG (H+L) Secondary Antibody (Pre-adsorbed) [NBP1-72745] - ELISA results of purified Polyclonal Donkey anti-Sheep IgG (H+L) Secondary Antibody [Alkaline Phosphatase] (Pre-adsorbed) tested against Sheep IgG. Each well was coated in duplicate with 1.0ug of antigen. The starting dilution of antibody was 5ug/ml and the X-axis represents the Log10 of a 3-fold dilution. This titration is a 4-parameter curve fit where the IC<sub>50</sub> is defined as the titer of the antibody. Assay performed using Buffer. Using the Alkaline Phosphatase format of this antibody.



Fluorophore-linked immunosorbent assay: Donkey anti-Sheep IgG (H+L) Secondary Antibody (Pre-adsorbed) [NBP1-72745] - Using the DyLight 405 format of this antibody.



ELISA: Donkey anti-Sheep IgG (H+L) Secondary Antibody (Pre-adsorbed) [NBP1-72745] - ELISA Results of Donkey anti-Sheep IgG (H+L) Secondary antibody (Pre-adsorbed) tested against purified Sheep IgG Mx8. Each well was coated in duplicate with 1.0 ug of Sheep IgG [Red Line], Chicken IgG [Green Line], Guinea Porcine IgG [Blue Line], Hamster IgG [Purple Line], Equine IgG, Human IgG, Mouse IgG, Rabbit IgG, and Rat IgG. The working dilution of Sheep IgG MX8 is 1:49,000. The starting dilution of antibody was 5ug/ml and the X-axis represents the Log10 of a 3-fold dilution. This titration is a 4-parameter curve fit where the IC50 is defined as the titer of the antibody. Assay performed using HRP Conjugate Stabilizer, Goat Anti-Donkey IgG HRP conjugated, and TMB substrate.



## Publications

Song, Y;Seward, CH;Chen, CY;LeBlanc, A;Leddy, AM;Stubbs, L; Isolated loss of the AUTS2 long isoform, brain-wide or targeted to Calbindin -lineage cells, generates a specific suite of brain, behavioral and molecular pathologies bioRxiv : the preprint server for biology 2023-05-06 [PMID: 37205596] (Immunohistochemistry)

Aoki H, Kimoto K, Hori N et al. Molarless condition suppresses proliferation but not differentiation rates into neurons in the rat dentate gyrus Neurosci Lett 2009-11-26 [PMID: 19931591] (IF/IHC, ICC/IF)



### **Novus Biologicals USA**

10730 E. Briarwood Avenue  
Centennial, CO 80112  
USA  
Phone: 303.730.1950  
Toll Free: 1.888.506.6887  
Fax: 303.730.1966  
nb-customerservice@bio-techne.com

### **Bio-Techne Canada**

21 Canmotor Ave  
Toronto, ON M8Z 4E6  
Canada  
Phone: 905.827.6400  
Toll Free: 855.668.8722  
Fax: 905.827.6402  
canada.inquires@bio-techne.com

### **Bio-Techne Ltd**

19 Barton Lane  
Abingdon Science Park  
Abingdon, OX14 3NB, United Kingdom  
Phone: (44) (0) 1235 529449  
Free Phone: 0800 37 34 15  
Fax: (44) (0) 1235 533420  
info.EMEA@bio-techne.com

### **General Contact Information**

[www.novusbio.com](http://www.novusbio.com)  
Technical Support: [nb-technical@bio-techne.com](mailto:nb-technical@bio-techne.com)  
Orders: [nb-customerservice@bio-techne.com](mailto:nb-customerservice@bio-techne.com)  
General: [novus@novusbio.com](mailto:novus@novusbio.com)

### **Limitations**

This product is for research use only and is not approved for use in humans or in clinical diagnosis. Secondary Antibodies are guaranteed for 1 year from date of receipt.

For more information on our 100% guarantee, please visit [www.novusbio.com/guarantee](http://www.novusbio.com/guarantee)

Earn gift cards/discounts by submitting a review: [www.novusbio.com/reviews/submit/NBP1-72745](http://www.novusbio.com/reviews/submit/NBP1-72745)

Earn gift cards/discounts by submitting a publication using this product:  
[www.novusbio.com/publications](http://www.novusbio.com/publications)

