

Product Datasheet

Rabbit anti-Mouse IgG (H+L) Secondary Antibody (Pre-adsorbed) NBP1-72731

Unit Size: 2 mg

Store at 4C short term. Aliquot and store at -20C long term. Avoid freeze-thaw cycles.

www.novusbio.com



technical@novusbio.com

Publications: 3

Protocols, Publications, Related Products, Reviews, Research Tools and Images at:
www.novusbio.com/NBP1-72731

Updated 10/23/2024 v.20.1

Earn rewards for product reviews and publications.

Submit a publication at www.novusbio.com/publications

Submit a review at www.novusbio.com/reviews/destination/NBP1-72731

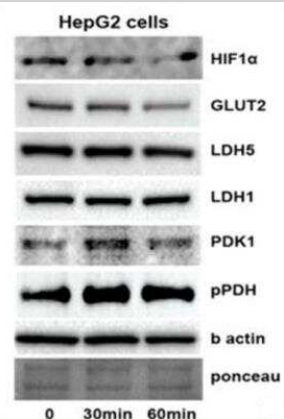


NBP1-72731**Rabbit anti-Mouse IgG (H+L) Secondary Antibody (Pre-adsorbed)**

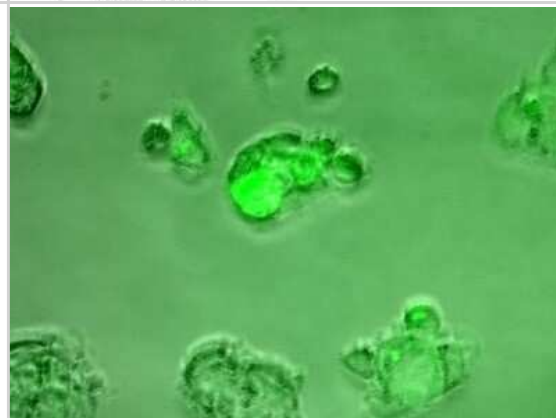
Product Information	
Unit Size	2 mg
Concentration	Please see the vial label for concentration. If unlisted please contact technical services.
Storage	Store at 4C short term. Aliquot and store at -20C long term. Avoid freeze-thaw cycles.
Clonality	Polyclonal
Preservative	0.01% Sodium Azide
Isotype	IgG
Purity	Multi-step
Buffer	0.02 M Potassium Phosphate, 0.15 M Sodium Chloride, pH 7.2
Product Description	
Description	<p>This product was prepared from monospecific antiserum by immunoaffinity chromatography using Mouse IgG coupled to agarose beads followed by solid phase adsorption(s) to remove any unwanted reactivities. Assay by immunoelectrophoresis (IEP) resulted in a single precipitin arc against anti-Rabbit Serum, Mouse IgG and Mouse Serum</p> <p>Store vial at 4C prior to opening. This product is stable for several weeks at 4C as an undiluted liquid. Dilute only prior to immediate use. For extended storage aliquot contents and freeze at -20C or below. Avoid cycles of freezing and thawing.</p>
Host	Rabbit
Species	Mouse
Specificity/Sensitivity	<p>This antibody was pre-adsorbed against Human Serum Proteins.</p> <p>No reaction was observed against Human Serum Proteins.</p>
Immunogen	Rabbit anti-Mouse IgG (H+L) Secondary Antibody (Pre-adsorbed) was produced by repeated immunization with mouse IgG whole molecule in rabbit
Product Application Details	
Applications	Western Blot, ELISA, Fluorophore-linked immunosorbent assay, Immunocytochemistry/ Immunofluorescence, Immunohistochemistry
Recommended Dilutions	Western Blot 1:2000 - 1:10000, ELISA 1:20000 - 1:40000, Immunohistochemistry 1:1000 - 1:5000, Immunocytochemistry/ Immunofluorescence, Fluorophore-linked immunosorbent assay
Application Notes	This product has been tested by ELISA and is suitable for immunoblotting (western or dot blot), ELISA, and immunohistochemistry as well as other peroxidase-antibody based enzymatic assays requiring lot-to-lot consistency.

Images

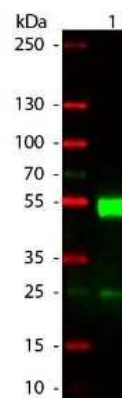
Western Blot: Rabbit anti-Mouse IgG (H+L) Secondary Antibody (Pre-adsorbed) [NBP1-72731] - Western blot expression of phospho PDH, PDK1, LDH5 and HIF1 alpha in hepatoma HepG2 cells, at 0, 30 and 60 min following exposure to 100 ug/ml of amifostine. Secondary antibody used: Rabbit anti-Mouse IgG (H+L) Secondary Antibody (NBP1-72731). Image collected and cropped by CiteAb from the following publication (<https://www.nature.com/articles/srep30986>) licensed under a CC-BY license.



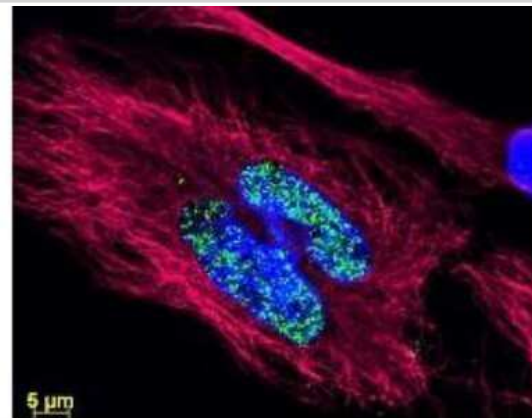
Immunocytochemistry/Immunofluorescence: Rabbit anti-Mouse IgG (H+L) Secondary Antibody (Pre-adsorbed) [NBP1-72731] - Hep core expression in Huh7 cells. Cells were fixed in 4% paraformaldehyde for 20 minutes at room temperature. The secondary antibody was diluted in 1% BSA in PBS at 1:500 dilution for 20 minutes at room temperature. Image from verified customer review. Image from the DyLight 488 version of this antibody.



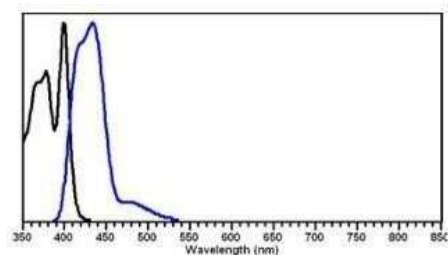
Western Blot: Rabbit anti-Mouse IgG (H+L) Secondary Antibody (Pre-adsorbed) [NBP1-72731] - Western Blot: Rabbit anti-Mouse IgG Secondary Antibody [Rhodamine] [NB120-6725] - Lane 1: Mouse IgG. Lane 2: None. Load: 50 ng per lane.



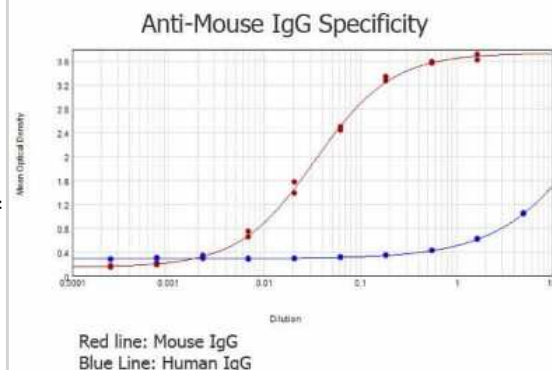
Immunocytochemistry/Immunofluorescence: Rabbit anti-Mouse IgG (H+L) Secondary Antibody (Pre-adsorbed) [NBP1-72731] - Immunocytochemistry/Immunofluorescence: Rabbit anti-Mouse IgG (H+L) Secondary Antibody [DyLight 488] [NBP1-72889] Image from the DyLight 488 version of this antibody.



Fluorophore-linked immunosorbent assay: Rabbit anti-Mouse IgG (H+L) Secondary Antibody (Pre-adsorbed) [NBP1-72731]



ELISA: Rabbit anti-Mouse IgG (H+L) Secondary Antibody (Pre-adsorbed) [NBP1-72731] - ELISA results of purified Rabbit anti-Mouse IgG (H+L) Secondary antibody (Pre-adsorbed) tested against purified Mouse IgG. Each well was coated in duplicate with 1.0 ug of Mouse IgG [red line] and Human IgG [blue line]. The starting dilution of antibody was 5ug/ml and the X-axis represents the Log10 of a 3-fold dilution. This titration is a 4-parameter curve fit where the IC50 is defined as the titer of the antibody. Assay performed using 3% fish gelatin, Goat anti-Rabbit igG Antibody Peroxidase Conjugated (Min X Bv Ch Gt GP Ham Hs Hu Ms Rt & Sh Serum Proteins) and TMB ELISA Substrate.



Publications

Shengjie Zhang, Eui-Jun Kim, Junfeng Huang, Peng Liu, Kristine Donahue, Qinchuan Wang, Yidan Wang, Sean Mcilwain, Ling Xie, Xian Chen, Lingjun Li, Wei Xu NEAT1 repression by MED12 creates chemosensitivity in p53 wild-type breast cancer cells. The FEBS journal 2024-02-21 [PMID: 38380720]

Ducas AA, Kuhn DCS, Bath LC Et al. Increased matrix metalloproteinase 9 activity correlates with flow-mediated intraluminal thrombus deposition and wall degeneration in human abdominal aortic aneurysm JVS Vasc Sci 2021-10-07 [PMID: 34617048]

Details:

Citation using the Biotin version of this antibody.

Koukourakis MI, Giatromanolaki A, Zois CE et al. Normal tissue radioprotection by amifostine via Warburg-type effects Sci Rep 2016-08-11 [PMID: 27507219] (WB)



Novus Biologicals USA

10730 E. Briarwood Avenue
Centennial, CO 80112
USA
Phone: 303.730.1950
Toll Free: 1.888.506.6887
Fax: 303.730.1966
nb-customerservice@bio-techne.com

Bio-Techne Canada

21 Canmotor Ave
Toronto, ON M8Z 4E6
Canada
Phone: 905.827.6400
Toll Free: 855.668.8722
Fax: 905.827.6402
canada.inquires@bio-techne.com

Bio-Techne Ltd

19 Barton Lane
Abingdon Science Park
Abingdon, OX14 3NB, United Kingdom
Phone: (44) (0) 1235 529449
Free Phone: 0800 37 34 15
Fax: (44) (0) 1235 533420
info.EMEA@bio-techne.com

General Contact Information

www.novusbio.com
Technical Support: nb-technical@bio-techne.com
Orders: nb-customerservice@bio-techne.com
General: novus@novusbio.com

Limitations

This product is for research use only and is not approved for use in humans or in clinical diagnosis. Secondary Antibodies are guaranteed for 1 year from date of receipt.

For more information on our 100% guarantee, please visit www.novusbio.com/guarantee

Earn gift cards/discounts by submitting a review: www.novusbio.com/reviews/submit/NBP1-72731

Earn gift cards/discounts by submitting a publication using this product:
www.novusbio.com/publications

