

Product Datasheet

Rabbit anti-Sheep IgG (H+L) Secondary Antibody NBP1-72704

Unit Size: 2 mg

Store at 4C short term. Aliquot and store at -20C long term. Avoid freeze-thaw cycles.

www.novusbio.com



technical@novusbio.com

Publications: 3

Protocols, Publications, Related Products, Reviews, Research Tools and Images at:
www.novusbio.com/NBP1-72704

Updated 10/23/2024 v.20.1

Earn rewards for product
reviews and publications.

Submit a publication at www.novusbio.com/publications

Submit a review at www.novusbio.com/reviews/destination/NBP1-72704

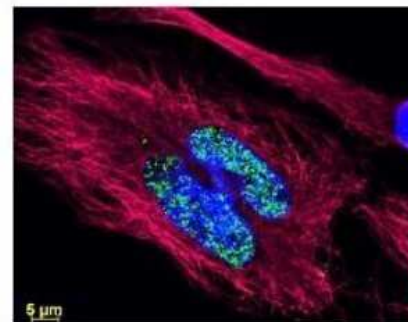


NBP1-72704**Rabbit anti-Sheep IgG (H+L) Secondary Antibody**

Product Information	
Unit Size	2 mg
Concentration	Please see the vial label for concentration. If unlisted please contact technical services.
Storage	Store at 4C short term. Aliquot and store at -20C long term. Avoid freeze-thaw cycles.
Clonality	Polyclonal
Preservative	0.01% Sodium Azide
Isotype	IgG
Purity	Immunogen affinity purified
Buffer	0.02 M Potassium Phosphate, 0.15 M Sodium Chloride, pH 7.2
Product Description	
Description	<p>This product was prepared from monospecific antiserum by immunoaffinity chromatography using Sheep IgG coupled to agarose. Assay by immunoelectrophoresis resulted in a single precipitin arc against anti-Rabbit Serum, Sheep IgG and Sheep Serum.</p> <p>Store vial at 4C prior to opening. This product is stable for several weeks at 4C as an undiluted liquid. Dilute only prior to immediate use. For extended storage aliquot contents and freeze at -20C or below. Avoid cycles of freezing and thawing.</p>
Host	Rabbit
Species	Sheep
Immunogen	Sheep IgG whole molecule
Product Application Details	
Applications	Western Blot, Dot Blot, ELISA, Fluorophore-linked immunosorbent assay, Immunocytochemistry/ Immunofluorescence, Immunohistochemistry, Immunohistochemistry-Paraffin
Recommended Dilutions	Western Blot 1:2000 - 1:10000, ELISA 1:50000 - 1:200000, Immunohistochemistry 1:1000 - 1:5000, Immunocytochemistry/ Immunofluorescence, Immunohistochemistry-Paraffin 1:200-1:500, Dot Blot, Fluorophore-linked immunosorbent assay
Application Notes	This product has been tested by ELISA and is suitable for use in ELISA, immunohistochemistry, and western blot. Specific conditions for reactivity should be optimized by the end user.

Images

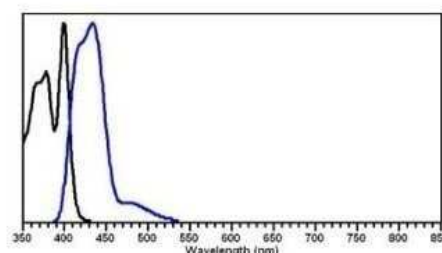
Immunocytochemistry/Immunofluorescence: Rabbit anti-Sheep IgG (H+L) Secondary Antibody [NBP1-72704] -
Immunocytochemistry/Immunofluorescence: Rabbit anti-Sheep IgG (H+L) Secondary Antibody [DyLight 488] [NBP1-72996] Image from the DyLight 488 version of this antibody.



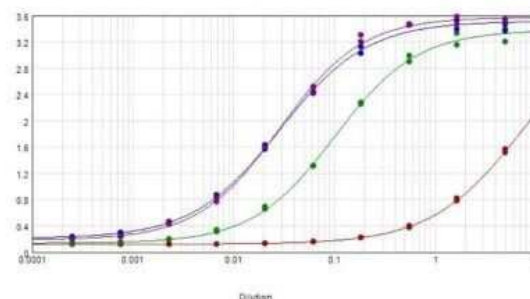
Dot Blot: Rabbit anti-Sheep IgG (H+L) Secondary Antibody [NBP1-72704] - Sheep IgG. Load: 200 ug, 66.7 ug, 22.2 ug, 7.41 ug or 2.47 ug as indicated. Primary antibody: N/A. Secondary antibody: Alkaline Phosphatase Conjugated Rabbit anti-Sheep IgG Antibody. Block: Blocking Buffer for Fluorescent Western Blotting at RT for 1 hour.



Fluorophore-linked immunosorbent assay: Rabbit anti-Sheep IgG (H+L) Secondary Antibody [NBP1-72704] - Using the DyLight 405 format of this antibody.



ELISA: Rabbit anti-Sheep IgG (H+L) Secondary Antibody [NBP1-72704] - ELISA results of purified Rabbit anti-Sheep IgG (H+L) Secondary Antibody [Unconjugated] tested against purified Sheep IgG. Each well was coated in duplicate with 1.0 ug of Sheep IgG (purple line). The starting dilution of antibody was 5ug/ml and the X-axis represents the Log10 of a 3-fold dilution. This titration is a 4-parameter curve fit where the IC50 is defined as the titer of the antibody. Assay performed using blocking buffer, Goat anti-Rabbit IgG (H+L) Secondary Antibody [HRP] (Pre-adsorbed), and TMB substrate.



Publications

Nagane M, Suge R, Watanabe S. Relationship between psychosomatic complaints and circadian rhythm irregularity assessed by salivary levels of melatonin and growth hormone Journal of Circadian Rhythms 2011-09-14 [PMID: 21914213] (Western Blot)

Nagane M, Yoshimura K, Watanabe S, Nomura M. A possible connection between psychosomatic symptoms and daily rhythmicity in growth hormone secretion in healthy Japanese students J Circadian Rhythms 2009-08-07 [PMID: 19656410]

Details:

This citation used the Alkaline Phosphatase format of this antibody.

Nagane M, Suge R, Watanabe S. Relationship between psychosomatic complaints and circadian rhythm irregularity assessed by salivary levels of melatonin and growth hormone. J Circadian Rhythms. [PMID: 21914213]

Details:

Citation using the Alkaline Phosphatase form of this antibody.





Novus Biologicals USA

10730 E. Briarwood Avenue
Centennial, CO 80112
USA
Phone: 303.730.1950
Toll Free: 1.888.506.6887
Fax: 303.730.1966
nb-customerservice@bio-techne.com

Bio-Techne Canada

21 Canmotor Ave
Toronto, ON M8Z 4E6
Canada
Phone: 905.827.6400
Toll Free: 855.668.8722
Fax: 905.827.6402
canada.inquires@bio-techne.com

Bio-Techne Ltd

19 Barton Lane
Abingdon Science Park
Abingdon, OX14 3NB, United Kingdom
Phone: (44) (0) 1235 529449
Free Phone: 0800 37 34 15
Fax: (44) (0) 1235 533420
info.EMEA@bio-techne.com

General Contact Information

www.novusbio.com
Technical Support: nb-technical@bio-
techne.com
Orders: nb-customerservice@bio-techne.com
General: novus@novusbio.com

Limitations

This product is for research use only and is not approved for use in humans or in clinical diagnosis. Secondary Antibodies are guaranteed for 1 year from date of receipt.

For more information on our 100% guarantee, please visit www.novusbio.com/guarantee

Earn gift cards/discounts by submitting a review: www.novusbio.com/reviews/submit/NBP1-72704

Earn gift cards/discounts by submitting a publication using this product:
www.novusbio.com/publications

