

Product Datasheet

Rabbit anti-Mouse IgG1 Heavy Chain Secondary Antibody [Alkaline Phosphatase] NBP1-72672

Unit Size: 1 mg

Store at 4C. Do not freeze.

www.novusbio.com



technical@novusbio.com

Protocols, Publications, Related Products, Reviews, Research Tools and Images at:
www.novusbio.com/NBP1-72672

Updated 10/23/2024 v.20.1

Earn rewards for product
reviews and publications.

Submit a publication at www.novusbio.com/publications

Submit a review at www.novusbio.com/reviews/destination/NBP1-72672



NBP1-72672**Rabbit anti-Mouse IgG1 Heavy Chain Secondary Antibody [Alkaline Phosphatase]**

Product Information	
Unit Size	1 mg
Concentration	Please see the vial label for concentration. If unlisted please contact technical services.
Storage	Store at 4C. Do not freeze.
Clonality	Polyclonal
Preservative	0.01% Sodium Azide
Isotype	IgG
Conjugate	Alkaline Phosphatase
Purity	Multi-step
Buffer	0.05 M Tris Chloride, 0.15M Sodium Chloride, 0.001M Magnesium Chloride, 0.0001M Zinc Chloride, 50% (v/v) Glycerol; pH 8.0, 10 mg/mL Bovine Serum Albumin (BSA) - Immunoglobulin and Protease free

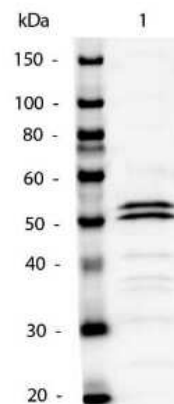
Product Description	
Description	<p>Store vial at 4C before opening. DO NOT FREEZE. This product is stable at 4C as an undiluted liquid. Dilute only prior to immediate use. Freezing alkaline phosphatase conjugates will result in a substantial loss of enzymatic activity.</p> <p>This product was prepared from monospecific antiserum by immunoaffinity chromatography using antigens coupled to agarose beads followed by solid phase adsorption(s) to remove any unwanted reactivities. Assay by immunoelectrophoresis resulted in a single precipitin arc against anti-Alkaline Phosphatase (calf intestine) and anti-Rabbit Serum</p>
Host	Rabbit
Species	Mouse
Specificity/Sensitivity	Specificity was confirmed by ELISA at less than 1% cross reactivity against other mouse heavy or light chain isotypes.
Immunogen	Mouse IgG1 heavy chain

Product Application Details	
Applications	Western Blot, Dot Blot, ELISA, Immunohistochemistry
Recommended Dilutions	Western Blot 1:500 - 1:2500, ELISA 1:5000, Immunohistochemistry 1:200 - 1:1000, Dot Blot
Application Notes	This product has been tested by ELISA, dot blot, and western blot and is suitable for ELISA, Immunohistochemistry western blotting as well as other anti IgG1 antibody based assays.



Images

Western Blot: Rabbit anti-Mouse IgG1 Heavy Chain Secondary Antibody [Alkaline Phosphatase] [NBP1-72672] - Western Blot of Rabbit anti-Mouse IgG1 Heavy Chain Secondary antibody [Alkaline Phosphatase]. Lane 1: Mouse IgG1. Lane 2: none. Load: 50ng per lane. Primary antibody: none. Secondary antibody: Rabbit anti-Mouse IgG1 Heavy Chain Secondary antibody [Alkaline Phosphatase] at 1:1,000 at 4C. Block for 30 min at RT. Reaction visualized using alkaline phosphatase substrate for 30 seconds. Predicted/Observed size: 55 kDa for Mouse IgG1.



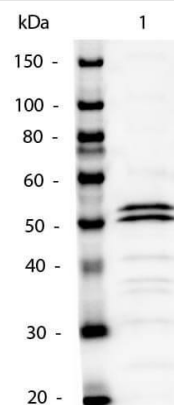
Dot Blot: Rabbit anti-Mouse IgG1 Heavy Chain Secondary Antibody [Alkaline Phosphatase] [NBP1-72672]



Dot Blot of Mouse IgG1 Secondary Antibody Alkaline Phosphatase Conjugated. Antigen: Mouse IgG1. Load: Lane 1 - 200ng Lane 2 - 66.7ng Lane 3 - 22.2ng Lane 4 - 7.4ng Lane 5 - 2.5ng. Primary antibody: none. Secondary antibody: Rabbit anti-Mouse IgG1 Heavy Chain Secondary Antibody [Alkaline Phosphatase] at 1:1,000 for one hour at RT. Block for 60 min at RT. Reaction visualized using alkaline phosphatase substrate for 30 seconds at RT.



Western Blot of Mouse IgG1 Secondary Antibody Alkaline Phosphatase Conjugated. Lane 1: Mouse IgG1. Lane 2: none. Load: 50ng per lane. Primary antibody: none. Secondary antibody: Rabbit anti-Mouse IgG1 Heavy Chain Secondary Antibody [Alkaline Phosphatase] at 1:1,000 o/n at 4C. Block for 30 min at RT. Reaction visualized using alkaline phosphatase substrate for 30 seconds. Predicted/Observed size: 55 kDa for Mouse IgG1.





Novus Biologicals USA

10730 E. Briarwood Avenue
Centennial, CO 80112
USA
Phone: 303.730.1950
Toll Free: 1.888.506.6887
Fax: 303.730.1966
nb-customerservice@bio-techne.com

Bio-Techne Canada

21 Canmotor Ave
Toronto, ON M8Z 4E6
Canada
Phone: 905.827.6400
Toll Free: 855.668.8722
Fax: 905.827.6402
canada.inquires@bio-techne.com

Bio-Techne Ltd

19 Barton Lane
Abingdon Science Park
Abingdon, OX14 3NB, United Kingdom
Phone: (44) (0) 1235 529449
Free Phone: 0800 37 34 15
Fax: (44) (0) 1235 533420
info.EMEA@bio-techne.com

General Contact Information

www.novusbio.com
Technical Support: nb-technical@bio-techne.com
Orders: nb-customerservice@bio-techne.com
General: novus@novusbio.com

Limitations

This product is for research use only and is not approved for use in humans or in clinical diagnosis. Secondary Antibodies are guaranteed for 1 year from date of receipt.

For more information on our 100% guarantee, please visit www.novusbio.com/guarantee

Earn gift cards/discounts by submitting a review: www.novusbio.com/reviews/submit/NBP1-72672

Earn gift cards/discounts by submitting a publication using this product:
www.novusbio.com/publications

