

# Product Datasheet

## Recombinant Human MLC1SA His Protein NBP1-72448-100ug

Unit Size: 100 ug

Store at 4C short term. Aliquot and store at -20C long term. Avoid freeze-thaw cycles.

[www.novusbio.com](http://www.novusbio.com)



[technical@novusbio.com](mailto:technical@novusbio.com)

Protocols, Publications, Related Products, Reviews, Research Tools and Images at:  
[www.novusbio.com/NBP1-72448](http://www.novusbio.com/NBP1-72448)

Updated 10/23/2024 v.20.1

Earn rewards for product  
reviews and publications.

Submit a publication at [www.novusbio.com/publications](http://www.novusbio.com/publications)

Submit a review at [www.novusbio.com/reviews/destination/NBP1-72448](http://www.novusbio.com/reviews/destination/NBP1-72448)



**NBP1-72448-100ug**

Recombinant Human MLC1SA His Protein

**Product Information**

<b>Unit Size</b>	100 ug
<b>Concentration</b>	1 mg/ml
<b>Storage</b>	Store at 4C short term. Aliquot and store at -20C long term. Avoid freeze-thaw cycles.
<b>Preservative</b>	No Preservative
<b>Purity</b>	>95%, by SDS-PAGE
<b>Buffer</b>	20 mM Tris-HCl buffer (pH 8.0), 10% glycerol, 2 mM DTT
<b>Target Molecular Weight</b>	25.2 kDa

**Product Description**

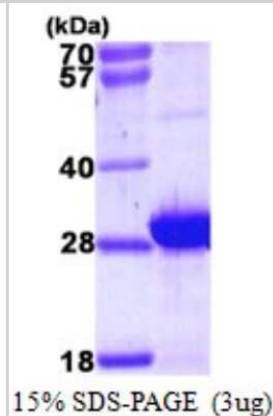
<b>Description</b>	<p>A recombinant protein with a N-Terminal His-tag and corresponding to the amino acids 1-208 of Human MLC1SA</p> <p><b>Source:</b> <i>E.coli</i></p> <p><b>Amino Acid Sequence:</b> MGSSHHHHHH SSGLVPRGSH MGSMPPKKDV PVKKPAGPSI SKPAAKPAAA GAPPAKTAE PAVPQAPQKT QEPPVDLSKV VIEFNKDQLE EFKEAFELFD RVGDGKILYS QCGDVMRALG QNPTNAEVLK VLG NPKSDEL KSRRVDFETF LPMLQAVAKN RGQGTIEDYL EGFRVFDKEG NGKVMGAELR HVLTTLGEKM TEEEVETVLA GHEDSNGCIN YEAFLEKHLS V</p>
<b>Gene ID</b>	140465
<b>Gene Symbol</b>	MYL6B
<b>Species</b>	Human

**Product Application Details**

<b>Applications</b>	SDS-Page
<b>Recommended Dilutions</b>	SDS-Page

**Images**

SDS-Page: Recombinant Human MLC1SA Protein [NBP1-72448] - 15% SDS-PAGE (3ug)





### **Novus Biologicals USA**

10730 E. Briarwood Avenue  
Centennial, CO 80112  
USA  
Phone: 303.730.1950  
Toll Free: 1.888.506.6887  
Fax: 303.730.1966  
nb-customerservice@bio-techne.com

### **Bio-Techne Canada**

21 Canmotor Ave  
Toronto, ON M8Z 4E6  
Canada  
Phone: 905.827.6400  
Toll Free: 855.668.8722  
Fax: 905.827.6402  
canada.inquires@bio-techne.com

### **Bio-Techne Ltd**

19 Barton Lane  
Abingdon Science Park  
Abingdon, OX14 3NB, United Kingdom  
Phone: (44) (0) 1235 529449  
Free Phone: 0800 37 34 15  
Fax: (44) (0) 1235 533420  
info.EMEA@bio-techne.com

### **General Contact Information**

www.novusbio.com  
Technical Support: nb-technical@bio-  
techne.com  
Orders: nb-customerservice@bio-techne.com  
General: novus@novusbio.com

### **Products Related to NBP1-72448-100ug**

---

NBP1-92124PEP	MLC1SA Recombinant Protein Antigen
NBP1-87102	S100B Antibody
NBP1-92124	MLC1SA Antibody
NBP1-85541	Myosin Light Chain 2 Antibody

---

### **Limitations**

This product is for research use only and is not approved for use in humans or in clinical diagnosis. Peptides and proteins are guaranteed for 3 months from date of receipt.

For more information on our 100% guarantee, please visit [www.novusbio.com/guarantee](http://www.novusbio.com/guarantee)

Earn gift cards/discounts by submitting a review: [www.novusbio.com/reviews/submit/NBP1-72448](http://www.novusbio.com/reviews/submit/NBP1-72448)

Earn gift cards/discounts by submitting a publication using this product:  
[www.novusbio.com/publications](http://www.novusbio.com/publications)

