

# Product Datasheet

## Recombinant Human Regucalcin His Protein NBP1-72431-100ug

Unit Size: 100 ug

Store at 4C short term. Aliquot and store at -20C long term. Avoid freeze-thaw cycles.

[www.novusbio.com](http://www.novusbio.com)



[technical@novusbio.com](mailto:technical@novusbio.com)

Protocols, Publications, Related Products, Reviews, Research Tools and Images at:  
[www.novusbio.com/NBP1-72431](http://www.novusbio.com/NBP1-72431)

Updated 10/23/2024 v.20.1

Earn rewards for product  
reviews and publications.

Submit a publication at [www.novusbio.com/publications](http://www.novusbio.com/publications)

Submit a review at [www.novusbio.com/reviews/destination/NBP1-72431](http://www.novusbio.com/reviews/destination/NBP1-72431)



**NBP1-72431-100ug****Recombinant Human Regucalcin His Protein****Product Information**

<b>Unit Size</b>	100 ug
<b>Concentration</b>	0.5 mg/ml
<b>Storage</b>	Store at 4C short term. Aliquot and store at -20C long term. Avoid freeze-thaw cycles.
<b>Preservative</b>	No Preservative
<b>Purity</b>	>85%, by SDS-PAGE
<b>Buffer</b>	20 mM Tris-HCl buffer (pH8.0), 2M UREA, 20% glycerol
<b>Target Molecular Weight</b>	35.4 kDa

**Product Description**

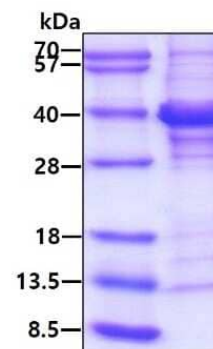
<b>Description</b>	<p>A denatured recombinant protein with a N-Terminal His-tag and corresponding to the amino acids 1-299 of Human Regucalcin</p> <p><b>Source:</b> <i>E.coli</i></p> <p><b>Amino Acid Sequence:</b> MGSSHHHHHH SSGLVPRGSH MSSIKIECVL  PENCRCGESP VWEEVSNSLL FVDIPAKKVC RWDSFTKQVQ RVTMDAPVSS  VALRQSGGYV ATIGTKFCAL NWKEQSAVVL ATVDNDKKNN RFNDGKVDPA  GRYFAGTMAE ETAPAVLERH QGALYSLFPD HHVKKYFDQV DISNGLDWSL  DHKIFYIIDS LSYSVDAFDY DLQTGQISNR RSVYKLEKEE QIPDGMCI  DA EGKLWVACYN GGRVIRLDPV TGKRLQTVKL PVDKTTSCCF GGKNYSEMYV  TCARDGMDPE GLLRQPEAGG IFKITGLGVK GIAPYSYAG</p>
<b>Gene ID</b>	9104
<b>Gene Symbol</b>	RGN
<b>Species</b>	Human

**Product Application Details**

<b>Applications</b>	SDS-Page
<b>Recommended Dilutions</b>	SDS-Page
<b>Application Notes</b>	Denatured protein is most likely not the best option for functional studies. It is better suited for Western Blot (WB) or imaging assays.

**Images**

SDS-Page: Recombinant Human Regucalcin Protein [NBP1-72431] - 3ug by SDS-PAGE under reducing condition and visualized by coomassie blue stain.





### **Novus Biologicals USA**

10730 E. Briarwood Avenue  
Centennial, CO 80112  
USA  
Phone: 303.730.1950  
Toll Free: 1.888.506.6887  
Fax: 303.730.1966  
nb-customerservice@bio-techne.com

### **Bio-Techne Canada**

21 Canmotor Ave  
Toronto, ON M8Z 4E6  
Canada  
Phone: 905.827.6400  
Toll Free: 855.668.8722  
Fax: 905.827.6402  
canada.inquires@bio-techne.com

### **Bio-Techne Ltd**

19 Barton Lane  
Abingdon Science Park  
Abingdon, OX14 3NB, United Kingdom  
Phone: (44) (0) 1235 529449  
Free Phone: 0800 37 34 15  
Fax: (44) (0) 1235 533420  
info.EMEA@bio-techne.com

### **General Contact Information**

www.novusbio.com  
Technical Support: nb-technical@bio-techne.com  
Orders: nb-customerservice@bio-techne.com  
General: novus@novusbio.com

### **Products Related to NBP1-72431-100ug**

---

NBP1-80849PEP	Regucalcin Recombinant Protein Antigen
210-TA-005	TNF-alpha [Unconjugated]
NBP1-80849	Regucalcin Antibody
NB100-56503	Cytochrome c Antibody (7H8.2C12) - BSA Free

---

### **Limitations**

This product is for research use only and is not approved for use in humans or in clinical diagnosis. Peptides and proteins are guaranteed for 3 months from date of receipt.

For more information on our 100% guarantee, please visit [www.novusbio.com/guarantee](http://www.novusbio.com/guarantee)

Earn gift cards/discounts by submitting a review: [www.novusbio.com/reviews/submit/NBP1-72431](http://www.novusbio.com/reviews/submit/NBP1-72431)

Earn gift cards/discounts by submitting a publication using this product:  
[www.novusbio.com/publications](http://www.novusbio.com/publications)

