

Product Datasheet

Recombinant Human KLF4 His-Cam Protein NBP1-72390-50ug

Unit Size: 50 ug

Store at 4C short term. Aliquot and store at -20C long term. Avoid freeze-thaw cycles.

www.novusbio.com



technical@novusbio.com

Protocols, Publications, Related Products, Reviews, Research Tools and Images at:
www.novusbio.com/NBP1-72390

Updated 10/23/2024 v.20.1

Earn rewards for product
reviews and publications.

Submit a publication at www.novusbio.com/publications

Submit a review at www.novusbio.com/reviews/destination/NBP1-72390



NBP1-72390-50ug

Recombinant Human KLF4 His-Cam Protein

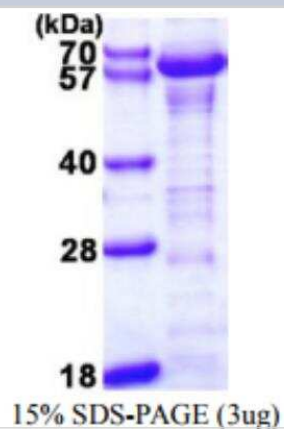
Product Information	
Unit Size	50 ug
Concentration	1 mg/ml
Storage	Store at 4C short term. Aliquot and store at -20C long term. Avoid freeze-thaw cycles.
Preservative	No Preservative
Purity	>80%, by SDS-PAGE
Buffer	20 mM Tris-HCl buffer (pH 8.0), 10% glycerol, 1 mM DTT, 0.1 M NaCl
Target Molecular Weight	58.1 kDa

Product Description	
Description	<p>A recombinant protein with a N-Terminal His-Cam tag and corresponding to the amino acids 11-395 of Human KLF4</p> <p>Source: <i>E.coli</i></p> <p>Amino Acid Sequence: MAHHHHHHMA DQLTEEQIAE FKEAFSLFDK DGDGTITTKE LGTVMRSLGQ NPTEAELQDM INEVDADGNG TIDFPEFLTM MARKMKDTDS EEEIREAFRV FDKDGNGYIS AAELRHVMTN LGEKLTDEEV DEMIREADID GDGQVNYEEF VQMMTAKGSM AVSDALLPSF STFASGPAGR EKTLRQAGAP NNRWREELSH MKRLPPVLPG RPYDLAAATV ATDLESGGAG AACGGSNLAP LPRRETEEFN DLLDLDFILS NSLTHPPESV AATVSSSSASA SSSSSPSSSG PASAPSTCSF TYPIRAGNDP GVAPGGTGGG LLYGRESAPP PTAPFNLADI NDVSPSGGFV AELLRPELDP VYIPPQQPQP PGGGLMGKFV LKASLSAPGS EYGSPSVISV SKGSPDGSH VVAPYNGGP PRTC PKIKQE AVSSCTHLGA GPPLSNGHRP AAHDFPLGRQ LPSRTTPTLG LEEVLSSRDC HPALPLPPGF HPHPGPNYPS FLPDQMOPQV PPLHYQELMP PGSCMPEEPK PKRGRRSWPR KRTAT</p>
Gene ID	9314
Gene Symbol	KLF4
Species	Human

Product Application Details	
Applications	SDS-Page
Recommended Dilutions	SDS-Page

Images

Recombinant Human KLF4 Protein [NBP1-72390]





Novus Biologicals USA

10730 E. Briarwood Avenue
Centennial, CO 80112
USA
Phone: 303.730.1950
Toll Free: 1.888.506.6887
Fax: 303.730.1966
nb-customerservice@bio-techne.com

Bio-Techne Canada

21 Canmotor Ave
Toronto, ON M8Z 4E6
Canada
Phone: 905.827.6400
Toll Free: 855.668.8722
Fax: 905.827.6402
canada.inquires@bio-techne.com

Bio-Techne Ltd

19 Barton Lane
Abingdon Science Park
Abingdon, OX14 3NB, United Kingdom
Phone: (44) (0) 1235 529449
Free Phone: 0800 37 34 15
Fax: (44) (0) 1235 533420
info.EMEA@bio-techne.com

General Contact Information

www.novusbio.com
Technical Support: nb-technical@bio-techne.com
Orders: nb-customerservice@bio-techne.com
General: novus@novusbio.com

Products Related to NBP1-72390-50ug

NBP2-52014-0.1mg	Recombinant Human KLF4 His Protein
AF2018	SOX2 Antibody [Unconjugated]
AF3158	KLF4 Antibody [Unconjugated]
AF1997	Nanog Antibody [Unconjugated]

Limitations

This product is for research use only and is not approved for use in humans or in clinical diagnosis. Peptides and proteins are guaranteed for 3 months from date of receipt.

For more information on our 100% guarantee, please visit www.novusbio.com/guarantee

Earn gift cards/discounts by submitting a review: www.novusbio.com/reviews/submit/NBP1-72390

Earn gift cards/discounts by submitting a publication using this product:
www.novusbio.com/publications

