

Product Datasheet

Recombinant Human NAT1 His Protein NBP1-72356-50ug

Unit Size: 50 ug

Store at 4C short term. Aliquot and store at -20C long term. Avoid freeze-thaw cycles.

www.novusbio.com



technical@novusbio.com

Protocols, Publications, Related Products, Reviews, Research Tools and Images at:
www.novusbio.com/NBP1-72356

Updated 10/23/2024 v.20.1

Earn rewards for product
reviews and publications.

Submit a publication at www.novusbio.com/publications

Submit a review at www.novusbio.com/reviews/destination/NBP1-72356



NBP1-72356-50ug

Recombinant Human NAT1 His Protein

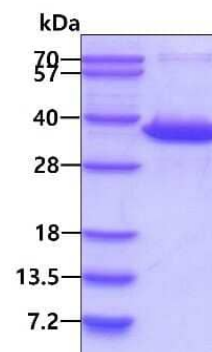
Product Information	
Unit Size	50 ug
Concentration	0.5 mg/ml
Storage	Store at 4C short term. Aliquot and store at -20C long term. Avoid freeze-thaw cycles.
Preservative	No Preservative
Purity	>85%, by SDS-PAGE
Buffer	20 mM Tris-HCl buffer (pH 8.0), 10% glycerol, 2 mM DTT, 0.1 M NaCl
Target Molecular Weight	36.1 kDa

Product Description	
Description	<p>A recombinant protein with a N-Terminal His-tag and corresponding to the amino acids 1-290 of Human NAT1</p> <p>Source: <i>E.coli</i></p> <p>Amino Acid Sequence: MGSSHHHHHH SGLVPRGSH MDIEAYLERI GYKKS RNKLD LETLTDILQH QIRAVPFENL NIHCGDAMD L GLEAIFDQVV RRNRGGWCLQ VNHLLYWALT TIGFETMLG GYVYSTPAKK YSTGMIHLLL QVTIDGRNYI VDAGFGRSYQ MWQPLELISG KDQPQVPCIF RLTEENGFYW LDQIRREQYI PNEEFLHSDL LEDSKYRKIY SFTLKPRTIE DFESMNTYLQ TSPASVFTSK SFCSLQTPDG VHCLVGFTLT HRRFNYKDNT DLIEFKTLSE EEIEKVLKNI FNISLQRKLV PKHGDRFFTI</p>
Gene ID	9
Gene Symbol	NAT1
Species	Human

Product Application Details	
Applications	SDS-Page
Recommended Dilutions	SDS-Page

Images

SDS-Page: Recombinant Human NAT1 His Protein [NBP1-72356] - 3ug by SDS-PAGE under reducing condition and visualized by coomassie blue stain.





Novus Biologicals USA

10730 E. Briarwood Avenue
Centennial, CO 80112
USA
Phone: 303.730.1950
Toll Free: 1.888.506.6887
Fax: 303.730.1966
nb-customerservice@bio-techne.com

Bio-Techne Canada

21 Canmotor Ave
Toronto, ON M8Z 4E6
Canada
Phone: 905.827.6400
Toll Free: 855.668.8722
Fax: 905.827.6402
canada.inquires@bio-techne.com

Bio-Techne Ltd

19 Barton Lane
Abingdon Science Park
Abingdon, OX14 3NB, United Kingdom
Phone: (44) (0) 1235 529449
Free Phone: 0800 37 34 15
Fax: (44) (0) 1235 533420
info.EMEA@bio-techne.com

General Contact Information

www.novusbio.com
Technical Support: nb-technical@bio-techne.com
Orders: nb-customerservice@bio-techne.com
General: novus@novusbio.com

Products Related to NBP1-72356-50ug

NBP2-13641PEP	NAT1 Recombinant Protein Antigen
NB600-326	GST Epitope Tag Antibody - BSA Free
NBP3-27820-100ul	NAT1 Antibody (SR4177)
NBP2-16756	Glutathione S-Transferase pi 1/GSTP1 Antibody

Limitations

This product is for research use only and is not approved for use in humans or in clinical diagnosis. Peptides and proteins are guaranteed for 3 months from date of receipt.

For more information on our 100% guarantee, please visit www.novusbio.com/guarantee

Earn gift cards/discounts by submitting a review: www.novusbio.com/reviews/submit/NBP1-72356

Earn gift cards/discounts by submitting a publication using this product:
www.novusbio.com/publications

