

# Product Datasheet

## CSDE1 Antibody NBP1-71915

Unit Size: 0.1 ml

Store at 4C. Do not freeze.

[www.novusbio.com](http://www.novusbio.com)



[technical@novusbio.com](mailto:technical@novusbio.com)

### Publications: 2

Protocols, Publications, Related Products, Reviews, Research Tools and Images at:  
[www.novusbio.com/NBP1-71915](http://www.novusbio.com/NBP1-71915)

Updated 10/23/2024 v.20.1

Earn rewards for product  
reviews and publications.

Submit a publication at [www.novusbio.com/publications](http://www.novusbio.com/publications)

Submit a review at [www.novusbio.com/reviews/destination/NBP1-71915](http://www.novusbio.com/reviews/destination/NBP1-71915)



**NBP1-71915**

CSDE1 Antibody

Product Information	
Unit Size	0.1 ml
Concentration	0.2 mg/ml
Storage	Store at 4C. Do not freeze.
Clonality	Polyclonal
Preservative	0.09% Sodium Azide
Isotype	IgG
Purity	Immunogen affinity purified
Buffer	TBS and 0.1% BSA

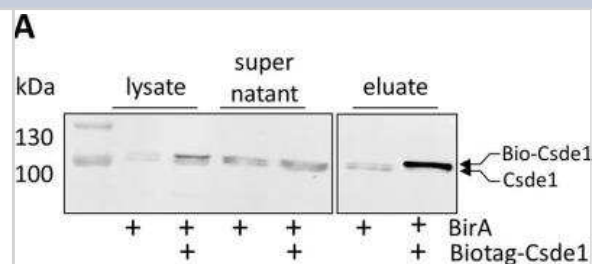
Product Description	
Host	Rabbit
Gene ID	7812
Gene Symbol	CSDE1
Species	Human, Mouse
Immunogen	The immunogen for this product maps to a region between residue 748 and 798 of human Upstream of NRAS using the numbering given in entry NP_001007554.1 (GeneID 7812).

Product Application Details	
Applications	Western Blot, Immunoprecipitation, Knockdown Validated
Recommended Dilutions	Western Blot 1:2000-1:10000, Immunoprecipitation 2- 10 ug/mg lysate, Knockdown Validated

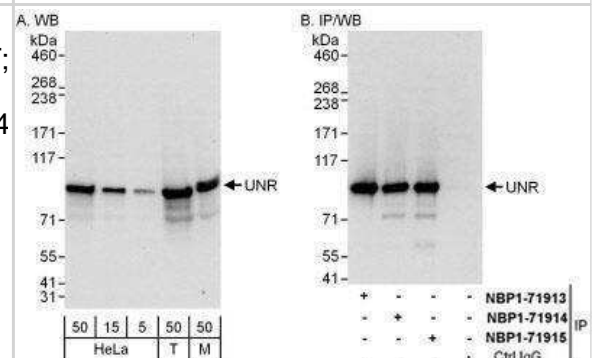


## Images

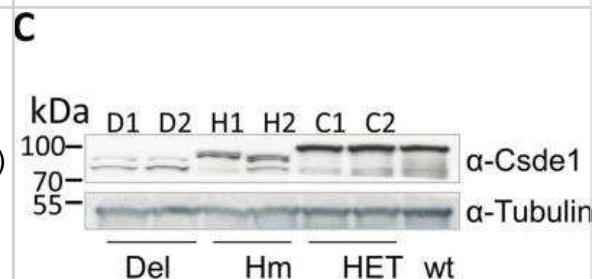
**Western Blot: CSDE1 Antibody [NBP1-71915] - Purification of Csde1 containing RNP complexes.** MEL cells expressing BirA, or expressing BirA plus biotag-Csde1 were lysed, and incubated with streptavidin beads. Supernatant and beads were collected, beads were washed and eluted. Western blot with fractions was stained with anti-Csde1 antibody. Size markers are indicated in kDa. The positions of endogenous and biotagged Csde1 are indicated. A single empty lane has been cropped. The uncropped image is available as Supplementary Figure S5. Image collected and cropped by CiteAb from the following publication ([nature.com/articles/s41598-018-20518-7](https://www.nature.com/articles/s41598-018-20518-7)), licensed under a CC-BY license.



**Western Blot: CSDE1 Antibody [NBP1-71915] - Whole cell lysate from HeLa (5, 15 and 50 mcg for WB; 1 mg for IP, 20% of IP loaded), 293T (T; 50 mcg), and mouse NIH3T3 (M; 50 mcg) cells.** Antibodies: Affinity purified rabbit anti-UNR antibody used for WB at 0.04 mcg/ml (A) and 0.4 mcg/ml (B) and used for IP at 6 mcg/mg lysate. UNR was also immunoprecipitated by rabbit anti-UNR antibodies NBP1-71913 and NBP1-71914, which recognize upstream epitopes.



**Knockdown Validated: CSDE1 Antibody [NBP1-71915] - Deletion of the 1st cold shock domain of Csde1 using Crispr/Cas9.** Western blot stained for Csde1 and tubulin as loading control. The membrane was cut between Csde1 and tubulin and staining performed on each separately. D1 (2.1) and D2 (2.14) represent out-of-frame deletions (Del), H1 (2.121) and H2 (2.123) in-frame deletions of the 1st cold shock domain (Hm). HET are control clones that harbor 1 deleted (out-of-frame) allele and 1 wt allele. Raw image scans are available as Supplementary Figure S6. Image collected and cropped by CiteAb from the following publication ([nature.com/articles/s41598-018-20518-7](https://www.nature.com/articles/s41598-018-20518-7)), licensed under a CC-BY license.



## Publications

Moore KS, Yagci N, van Alphen F et al. Strap associates with Csde1 and affects expression of select Csde1-bound transcripts PLoS ONE 2018-08-23 [PMID: 30138317] (WB, Mouse)

Moore KS, Yagci N, van Alphen F, Paolini NA. Csde1 binds transcripts involved in protein homeostasis and controls their expression in an erythroid cell line. Sci Rep. 2018-02-08 [PMID: 29422612] (WB, Mouse)



### **Novus Biologicals USA**

10730 E. Briarwood Avenue  
Centennial, CO 80112  
USA  
Phone: 303.730.1950  
Toll Free: 1.888.506.6887  
Fax: 303.730.1966  
nb-customerservice@bio-techne.com

### **Bio-Techne Canada**

21 Canmotor Ave  
Toronto, ON M8Z 4E6  
Canada  
Phone: 905.827.6400  
Toll Free: 855.668.8722  
Fax: 905.827.6402  
canada.inquires@bio-techne.com

### **Bio-Techne Ltd**

19 Barton Lane  
Abingdon Science Park  
Abingdon, OX14 3NB, United Kingdom  
Phone: (44) (0) 1235 529449  
Free Phone: 0800 37 34 15  
Fax: (44) (0) 1235 533420  
info.EMEA@bio-techne.com

### **General Contact Information**

[www.novusbio.com](http://www.novusbio.com)  
Technical Support: [nb-technical@bio-techne.com](mailto:nb-technical@bio-techne.com)  
Orders: [nb-customerservice@bio-techne.com](mailto:nb-customerservice@bio-techne.com)  
General: [novus@novusbio.com](mailto:novus@novusbio.com)

### **Products Related to NBP1-71915**

---

HAF008	Goat anti-Rabbit IgG Secondary Antibody [HRP]
NB7160	Goat anti-Rabbit IgG (H+L) Secondary Antibody [HRP]
NBP2-24891	Rabbit IgG Isotype Control
H00007812-P02-10ug	Recombinant Human CSDE1 GST (N-Term) Protein

---

### **Limitations**

This product is for research use only and is not approved for use in humans or in clinical diagnosis. Primary Antibodies are guaranteed for 1 year from date of receipt.

For more information on our 100% guarantee, please visit [www.novusbio.com/guarantee](http://www.novusbio.com/guarantee)

Earn gift cards/discounts by submitting a review: [www.novusbio.com/reviews/submit/NBP1-71915](http://www.novusbio.com/reviews/submit/NBP1-71915)

Earn gift cards/discounts by submitting a publication using this product:  
[www.novusbio.com/publications](http://www.novusbio.com/publications)

