

Product Datasheet

LRRFIP1 Antibody NBP1-71835

Unit Size: 0.1 ml

Store at 4C. Do not freeze.

www.novusbio.com



technical@novusbio.com

Reviews: 3

Protocols, Publications, Related Products, Reviews, Research Tools and Images at:
www.novusbio.com/NBP1-71835

Updated 9/9/2025 v.20.1

**Earn rewards for product
reviews and publications.**

Submit a publication at www.novusbio.com/publications

Submit a review at www.novusbio.com/reviews/destination/NBP1-71835



NBP1-71835

LRRFIP1 Antibody

Product Information	
Unit Size	0.1 ml
Concentration	0.2 mg/ml
Storage	Store at 4C. Do not freeze.
Clonality	Polyclonal
Preservative	0.09% Sodium Azide
Isotype	IgG
Purity	Immunogen affinity purified
Buffer	TBS, 0.1% BSA

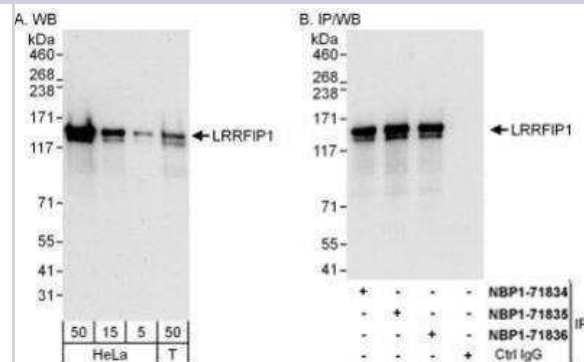
Product Description	
Description	Novus Biologicals Rabbit LRRFIP1 Antibody (NBP1-71835) is a polyclonal antibody validated for use in WB, ICC/IF and IP. All Novus Biologicals antibodies are covered by our 100% guarantee.
Host	Rabbit
Gene ID	9208
Gene Symbol	LRRFIP1
Species	Human
Immunogen	The immunogen for this product maps to a region between residue 500 and 550 of human Leucine Rich Repeat (in FLII) Interacting Protein 1 using the numbering given in entry NP_001131024.1 (GeneID 9208).

Product Application Details	
Applications	Western Blot, Immunocytochemistry/ Immunofluorescence, Immunoprecipitation
Recommended Dilutions	Western Blot 1:2000-1:10000, Immunocytochemistry/ Immunofluorescence From verified customer review., Immunoprecipitation 2 - 5 ug/mg lysate

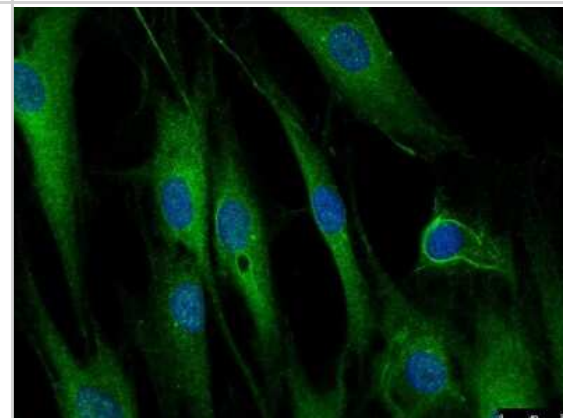


Images

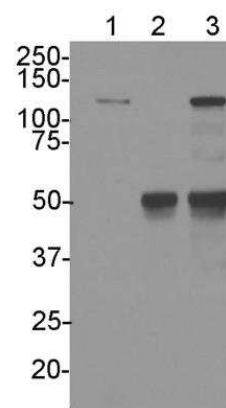
Western Blot: LRRFIP1 Antibody [NBP1-71835] - Whole cell lysate from HeLa (5, 15 and 50 ug for WB; 1 mg for IP, 20% of IP loaded) and 293T (50 ug) cells. Affinity purified rabbit anti-LRRFIP1 antibody used for WB at 0.04 ug/mL (A) and 0.4 ug/mL (B) and used for IP at 6 ug/mg lysate. LRRFIP1 was also immunoprecipitated by rabbit anti-LRRFIP1 antibodies NBP1-71834 and NBP1-71836, which recognize other epitopes.



Immunocytochemistry/Immunofluorescence: LRRFIP1 Antibody [NBP1-71835] - LRRFIP1 in human fibroblasts (Green). 1:250 dilution in 1X PBS/1% BSA/0.3% Triton X-100. 16 hours, 4C. Image submitted by a verified customer review.



Immunoprecipitation: LRRFIP1 Antibody [NBP1-71835] - LRRFIP1 IP in B-cell whole cell lysate. 2 ug antibody : 500 ug whole cell lysate. Same antibody used at 1:2000 for Western blot. Image submitted by a verified customer review.





Novus Biologicals USA

10730 E. Briarwood Avenue
Centennial, CO 80112
USA
Phone: 303.730.1950
Toll Free: 1.888.506.6887
Fax: 303.730.1966
nb-customerservice@bio-techne.com

Bio-Techne Canada

21 Canmotor Ave
Toronto, ON M8Z 4E6
Canada
Phone: 905.827.6400
Toll Free: 855.668.8722
Fax: 905.827.6402
canada.inquires@bio-techne.com

Bio-Techne Ltd

19 Barton Lane
Abingdon Science Park
Abingdon, OX14 3NB, United Kingdom
Phone: (44) (0) 1235 529449
Free Phone: 0800 37 34 15
Fax: (44) (0) 1235 533420
info.EMEA@bio-techne.com

General Contact Information

www.novusbio.com
Technical Support: nb-technical@bio-techne.com
Orders: nb-customerservice@bio-techne.com
General: novus@novusbio.com

Products Related to NBP1-71835

HAF008	Goat anti-Rabbit IgG Secondary Antibody [HRP]
NB7160	Goat anti-Rabbit IgG (H+L) Secondary Antibody [HRP]
NBP2-24891	Rabbit IgG Isotype Control
H00009208-Q01-10ug	Recombinant Human LRRFIP1 GST (N-Term) Protein

Limitations

This product is for research use only and is not approved for use in humans or in clinical diagnosis. Primary Antibodies are guaranteed for 1 year from date of receipt.

For more information on our 100% guarantee, please visit www.novusbio.com/guarantee

Earn gift cards/discounts by submitting a review: www.novusbio.com/reviews/submit/NBP1-71835

Earn gift cards/discounts by submitting a publication using this product:
www.novusbio.com/publications

