

# Product Datasheet

## Patched 1/PTCH Antibody - BSA Free NBP1-71662

Unit Size: 0.1 ml

Store at 4C short term. Aliquot and store at -20C long term. Avoid freeze-thaw cycles.

[www.novusbio.com](http://www.novusbio.com)



[technical@novusbio.com](mailto:technical@novusbio.com)

### Publications: 6

Protocols, Publications, Related Products, Reviews, Research Tools and Images at:  
[www.novusbio.com/NBP1-71662](http://www.novusbio.com/NBP1-71662)

Updated 10/23/2024 v.20.1

Earn rewards for product  
reviews and publications.

Submit a publication at [www.novusbio.com/publications](http://www.novusbio.com/publications)

Submit a review at [www.novusbio.com/reviews/destination/NBP1-71662](http://www.novusbio.com/reviews/destination/NBP1-71662)



**NBP1-71662**

Patched 1/PTCH Antibody - BSA Free

Product Information	
Unit Size	0.1 ml
Concentration	1.22 mg/ml
Storage	Store at 4C short term. Aliquot and store at -20C long term. Avoid freeze-thaw cycles.
Clonality	Polyclonal
Preservative	0.05% Sodium Azide
Isotype	IgG
Purity	Immunogen affinity purified
Buffer	PBS

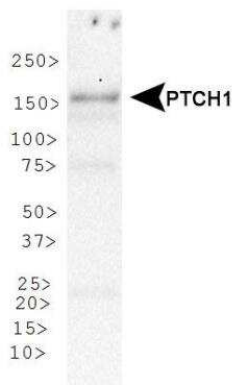
Product Description	
Host	Rabbit
Gene ID	5727
Gene Symbol	PTCH1
Species	Human, Mouse, Rat
Reactivity Notes	Rat reactivity reported in scientific literature (PMID: 30193838).
Immunogen	A genomic peptide made to a C-terminal region of the human Patched 1 protein (within residues 1200-1350). [Swiss-Prot Q13635]
Notes	Manufactured by Genomic Antibody Technology™. GAT <a href="#">FAQs</a>

Product Application Details	
Applications	Western Blot, Immunohistochemistry, Immunohistochemistry-Paraffin
Recommended Dilutions	Western Blot 1:2500, Immunohistochemistry 1:50 - 1:250, Immunohistochemistry-Paraffin 1:50 - 1:250
Application Notes	This Patched 1 antibody is useful in Western blot, where a band is seen ~161 kDa.

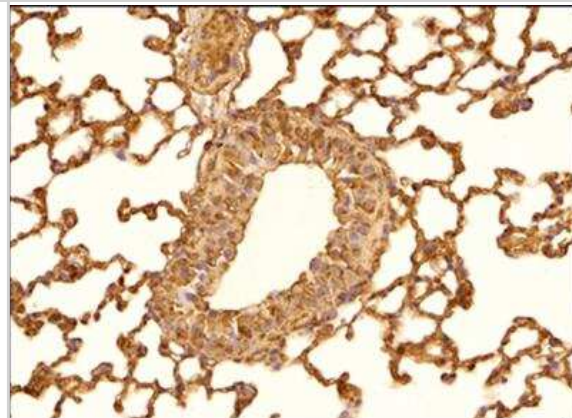


## Images

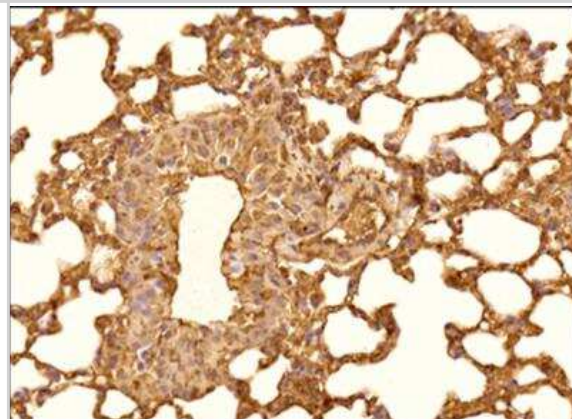
Western Blot: Patched 1/PTCH Antibody [NBP1-71662] - Analysis of Patched 1 in human skeletal muscle protein.



Immunohistochemistry-Paraffin: Patched 1/PTCH Antibody [NBP1-71662] - IHC analysis of formalin fixed paraffin embedded tissue section of mouse lung using 1:50 dilution of PTCH antibody with HRP-DAB detection and hematoxylin counterstaining. The antibody generated a specific membrane-cytoplasmic staining in bronchiolar and alveolar epithelial cells with stronger signal towards the membranes of the cells.



Immunohistochemistry-Paraffin: Patched 1/PTCH Antibody [NBP1-71662] - IHC analysis of formalin fixed paraffin embedded tissue section of mouse lung using 1:50 dilution of PTCH antibody with HRP-DAB detection and hematoxylin counterstaining. The antibody generated a specific membrane-cytoplasmic staining in bronchiolar and alveolar epithelial cells with stronger signal towards the membranes of the cells.



## Publications

X Wang, X Li, T Wang, SP Wu, JW Jeong, TH Kim, SL Young, BA Lessey, RB Lanz, JP Lydon, FJ DeMayo SOX17 regulates uterine epithelial-stromal cross-talk acting via a distal enhancer upstream of Ihh Nat Commun, 2018-10-24;9(1):4421. 2018-10-24 [PMID: 30356064]

Cheng AY, Lan J, Lee CH Impaired Wnt/beta-catenin and protein patched homolog 1 signaling in extraocular sebaceous carcinoma: A clinical and histopathological study The Journal of dermatology 2022-03-22 [PMID: 35318716]

Li X, Wen W, Li P Et Al. Mitochondrial Protection and Against Glutamate Neurotoxicity via Shh/Ptch1 Signaling Pathway to Ameliorate Cognitive Dysfunction by Kaixin San in Multi-Infarct Dementia Rats Oxidative medicine and cellular longevity 2021-07-09 [PMID: 34306310] (WB)

Takeuchi Y, Kito A, Itoh S et al. Kruppel-Like Factor 4 represses osteoblast differentiation via ciliary Hedgehog signaling. Exp. Cell Res. 2018-10-15 [PMID: 30193838] (WB, Rat)

M W, SP W, X W et al. Decreased epithelial progesterone receptor A at the window of receptivity is required for preparation of the endometrium for embryo attachment. Biology of Reproduction. 1905-07-09 [PMID: 28203817] (Mouse)

Jeng KS, Sheen IS, Jeng WJ et al. High expression of Sonic Hedgehog signaling pathway genes indicates a risk of recurrence of breast carcinoma. Onco Targets Ther 2013-12-27 [PMID: 24403838] (WB, Human)



## Procedures

### Western Blot protocol specific for Patched 1 antibody (NBP1-71662)

Patched 1/PTCH Antibody:

Western Blot Protocol

1. Perform SDS-PAGE on samples to be analyzed, loading 40 ug of total protein per lane.
2. Transfer proteins to membrane according to the instructions provided by the manufacturer of the membrane and transfer apparatus.
3. Stain according to standard Ponceau S procedure (or similar product) to assess transfer success, and mark molecular weight standards where appropriate.
4. Rinse the blot.
5. Block the membrane using standard blocking buffer for at least 1 hour.
6. Wash the membrane in wash buffer three times for 10 minutes each.
7. Dilute primary antibody in blocking buffer and incubate 1 hour at room temperature.
8. Wash the membrane in wash buffer three times for 10 minutes each.
9. Apply the diluted HRP conjugated secondary antibody in blocking buffer (as per manufacturers instructions) and incubate 1 hour at room temperature.
10. Wash the blot in wash buffer three times for 10 minutes each (this step can be repeated as required to reduce background).
11. Apply the detection reagent of choice in accordance with the manufacturers instructions.

\*Note: Tween-20 can be added to the blocking or antibody dilution buffer at a final concentration of 0.05-0.2%.





### **Novus Biologicals USA**

10730 E. Briarwood Avenue  
Centennial, CO 80112  
USA  
Phone: 303.730.1950  
Toll Free: 1.888.506.6887  
Fax: 303.730.1966  
nb-customerservice@bio-techne.com

### **Bio-Techne Canada**

21 Canmotor Ave  
Toronto, ON M8Z 4E6  
Canada  
Phone: 905.827.6400  
Toll Free: 855.668.8722  
Fax: 905.827.6402  
canada.inquires@bio-techne.com

### **Bio-Techne Ltd**

19 Barton Lane  
Abingdon Science Park  
Abingdon, OX14 3NB, United Kingdom  
Phone: (44) (0) 1235 529449  
Free Phone: 0800 37 34 15  
Fax: (44) (0) 1235 533420  
info.EMEA@bio-techne.com

### **General Contact Information**

www.novusbio.com  
Technical Support: nb-technical@bio-techne.com  
Orders: nb-customerservice@bio-techne.com  
General: novus@novusbio.com

### **Products Related to NBP1-71662**

---

NB820-59253	Human Skeletal Muscle Whole Tissue Lysate (Adult Whole Normal)
HAF008	Goat anti-Rabbit IgG Secondary Antibody [HRP]
NB7160	Goat anti-Rabbit IgG (H+L) Secondary Antibody [HRP]
NBP2-24891	Rabbit IgG Isotype Control

---

### **Limitations**

This product is for research use only and is not approved for use in humans or in clinical diagnosis. Primary Antibodies are guaranteed for 1 year from date of receipt.

For more information on our 100% guarantee, please visit [www.novusbio.com/guarantee](http://www.novusbio.com/guarantee)

Earn gift cards/discounts by submitting a review: [www.novusbio.com/reviews/submit/NBP1-71662](http://www.novusbio.com/reviews/submit/NBP1-71662)

Earn gift cards/discounts by submitting a publication using this product:  
[www.novusbio.com/publications](http://www.novusbio.com/publications)

